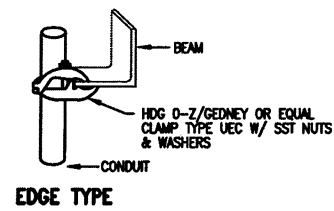


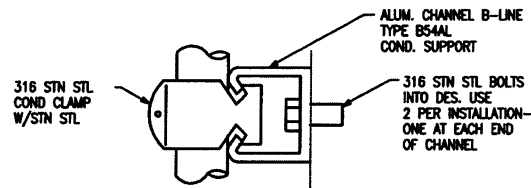
PARALLEL

RIGHT ANGLE

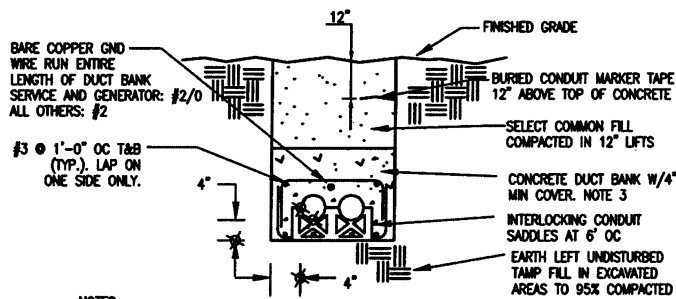


EDGE TYPE

01 TYPICAL CONDUIT SUPPORTS  
NOT TO SCALE

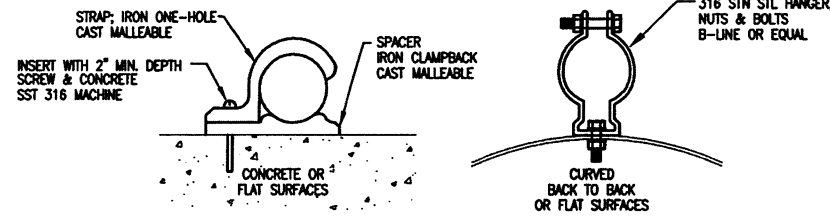


02 TYPICAL CONDUIT SUPPORT ON CONCRETE STRUCTURES FOR MULTIPLE CONDUIT RUNS  
SCALE: NOT TO SCALE

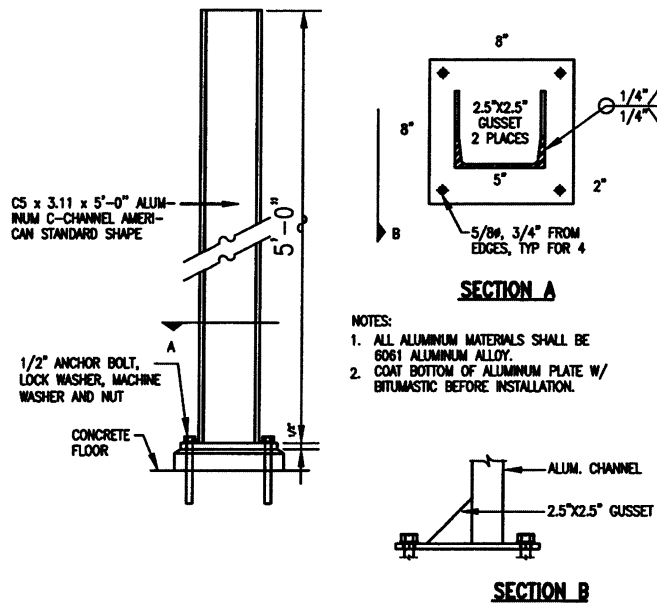


- NOTES:
1. NUMBER AND SIZE OF CONDUITS SHALL BE AS SHOWN ON THE PLANS.
  2. CONCRETE SHALL BE DYED RED THROUGHOUT.
  3. TYPICAL REINFORCEMENT SHALL BE #3 @ 6 IN. T & B.
  4. PROVIDE 6" SEPARATION BETWEEN 480 VOLT POWER CONDUITS AND ANALOG SIGNAL CONDUIT.
  5. CONCRETE SHALL BE 4000 PSI @ 28 DAYS.
  6. WHERE DUCTBANK CONTACTS AND EXISTING STRUCTURE, DOWEL 6 IN. INTO STRUCTURE W/ #3 REBAR.

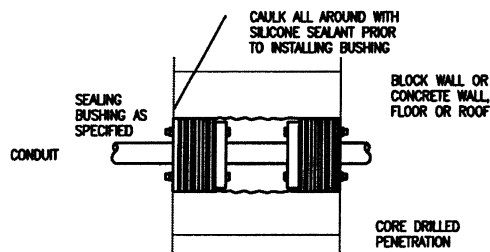
07 DETAIL - CONCRETE ENCASED UNDERGROUND DUCTBANK  
NOT TO SCALE



03 TYPICAL CONDUIT SUPPORT SINGLE CONDUIT  
NOT TO SCALE

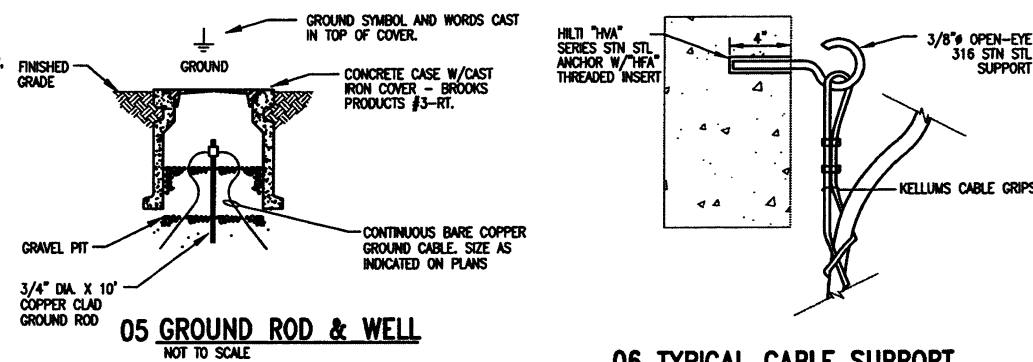


04 DETAIL - EQUIPMENT STAND - ALUMINUM  
NOT TO SCALE



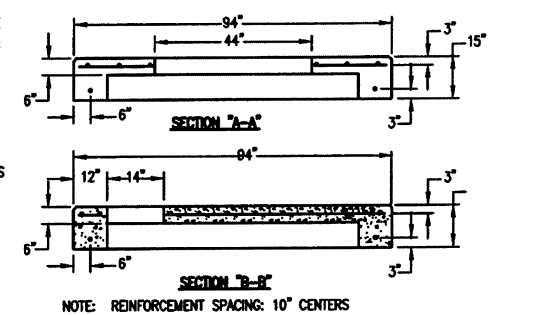
- NOTES:
1. TYPICAL FOR NEW PENETRATIONS OF EXISTING WALLS, ROOFS & FLOORS.
  2. REPAIR ALL DAMAGE DONE BY CORE DRILL.

08 WATERTIGHT CONDUIT PENETRATION  
NOT TO SCALE

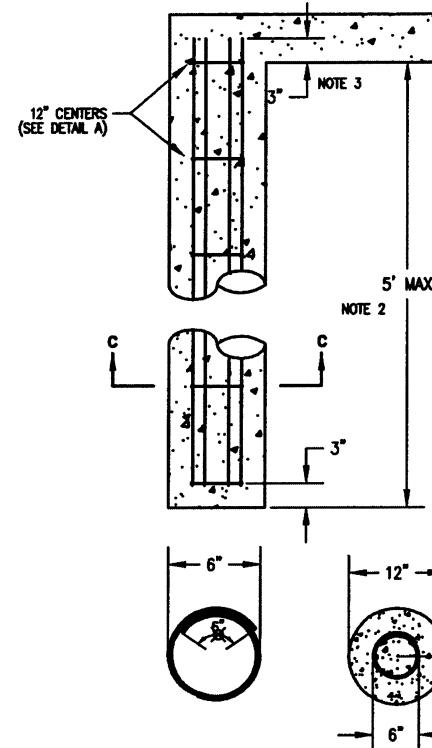


05 GROUND ROD & WELL  
NOT TO SCALE

06 TYPICAL CABLE SUPPORT  
NOT TO SCALE



NOTE: REINFORCEMENT SPACING: 10" CENTERS

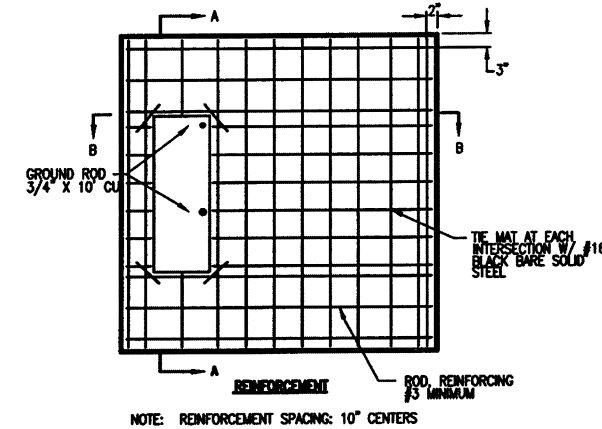


REINFORCING SCHEDULE

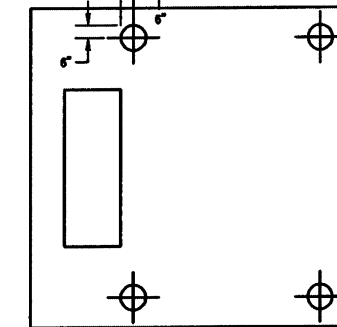
NUMBER	SIZE	LENGTH	SHAPE
6	#5	5'	STRAIGHT
6	#3	2'-1"	HOOP (DETAIL A)

- NOTES:
1. PIERS ARE REQUIRED ON ALL PADS UNLESS OTHERWISE NOTED.
  2. PIER DEPTH SHALL BE 10 FEET BELOW BOTTOM OF PAD UNLESS ROCK OR OTHER HARD SURFACES ARE ENCOUNTERED. IF ROCK OR OTHER HARD SURFACES ARE ENCOUNTERED PRIOR TO A 10 FOOT DEPTH, PIER DEPTH SHALL EXTEND 6 INCHES INTO THE HARD SURFACE.
  3. PIER REINFORCING TO EXTEND 3 INCHES INTO PAD. FOUR PIERS POSITIONED AS SHOWN SHALL BE FURNISHED FOR.
  4. ALL REBAR SIZE #4 MINIMUM.

09 DETAIL - PAD PIER



NOTE: REINFORCEMENT SPACING: 10" CENTERS



PER LOCATIONS

10 DETAIL - 500 KVA TRANSFORMER PAD  
NOT TO SCALE

This record drawing is a compilation of the sealed engineering drawing for this project, modified by addenda, change orders and information furnished by the contractor. The information shown on the record drawings that was provided by the contractor or others not associated with the design engineer cannot be verified for accuracy or completeness. This original sealed drawings are on file at the offices of Birkhoff, Hendricks & Carter, L.L.P.  
BY: PAC DATE 03/06/12

These plans and related specifications were prepared for construction of this specific project only. Reuse of these documents is not permitted without written authorization of Birkhoff, Hendricks & Carter, L.L.P.

**BIRKHOFF, HENDRICKS & CARTER, L.L.P.**  
PROFESSIONAL ENGINEERS  
Texas Firm F526  
11910 Greenville Ave., Suite 600  
Dallas, Texas 75243 (214) 361-7900



THESE DOCUMENTS ARE FOR BIDDING, CONSTRUCTION, AND PERMIT PURPOSES.  
*Joseph A. Kotrla*  
DATE: 5-28-2010  
McCREARY & ASSOCIATES, INC.  
Consulting Engineers  
Dallas, Texas FIRM No. F-338

**CITY OF ROCKWALL, TEXAS**  
SQUABLE CREEK LIFT STATION  
DETAILS

BHC  
PROJECT NO.  
2007-110  
MAY 2010

SHEET NO.  
**E07**