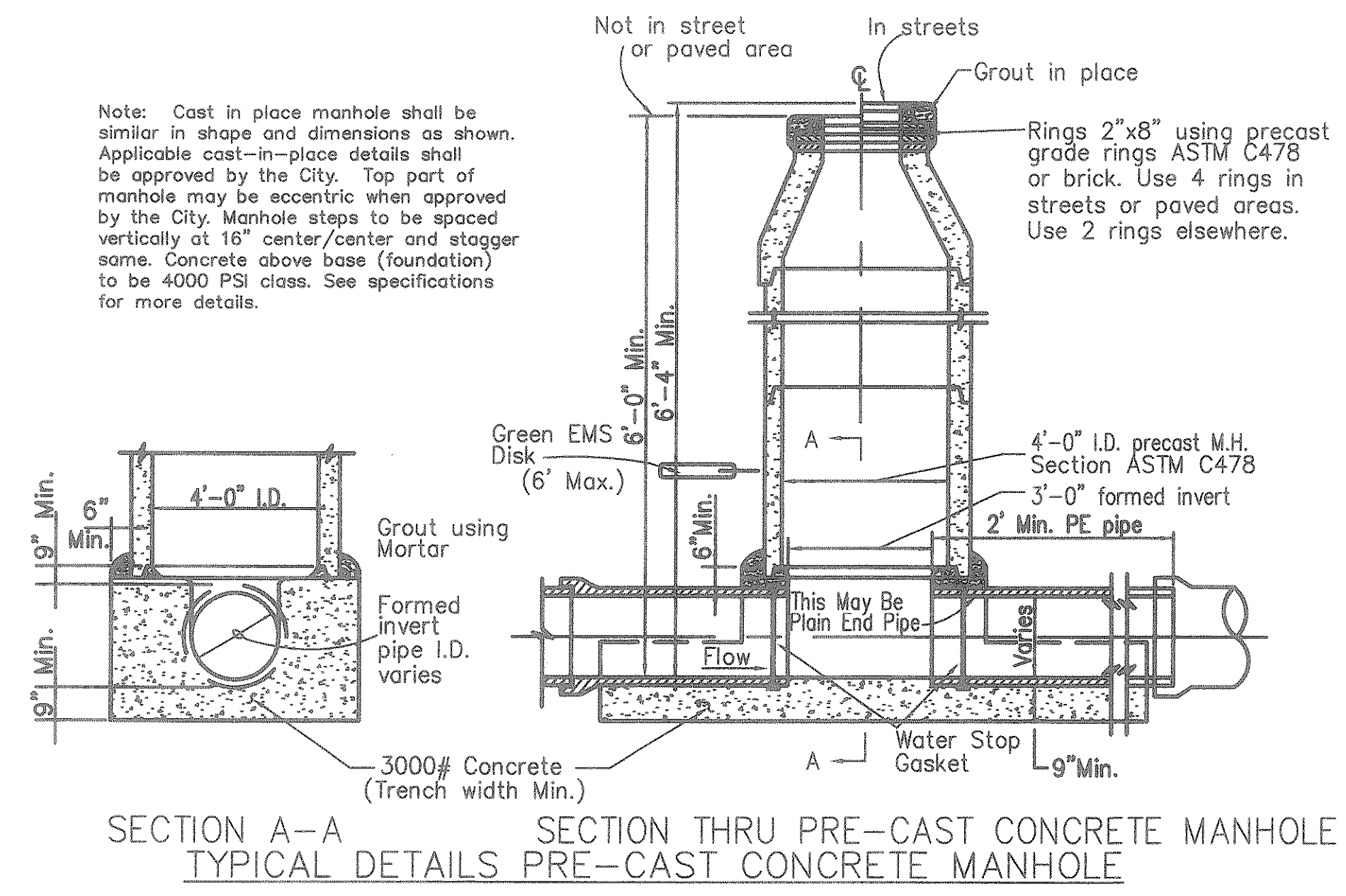
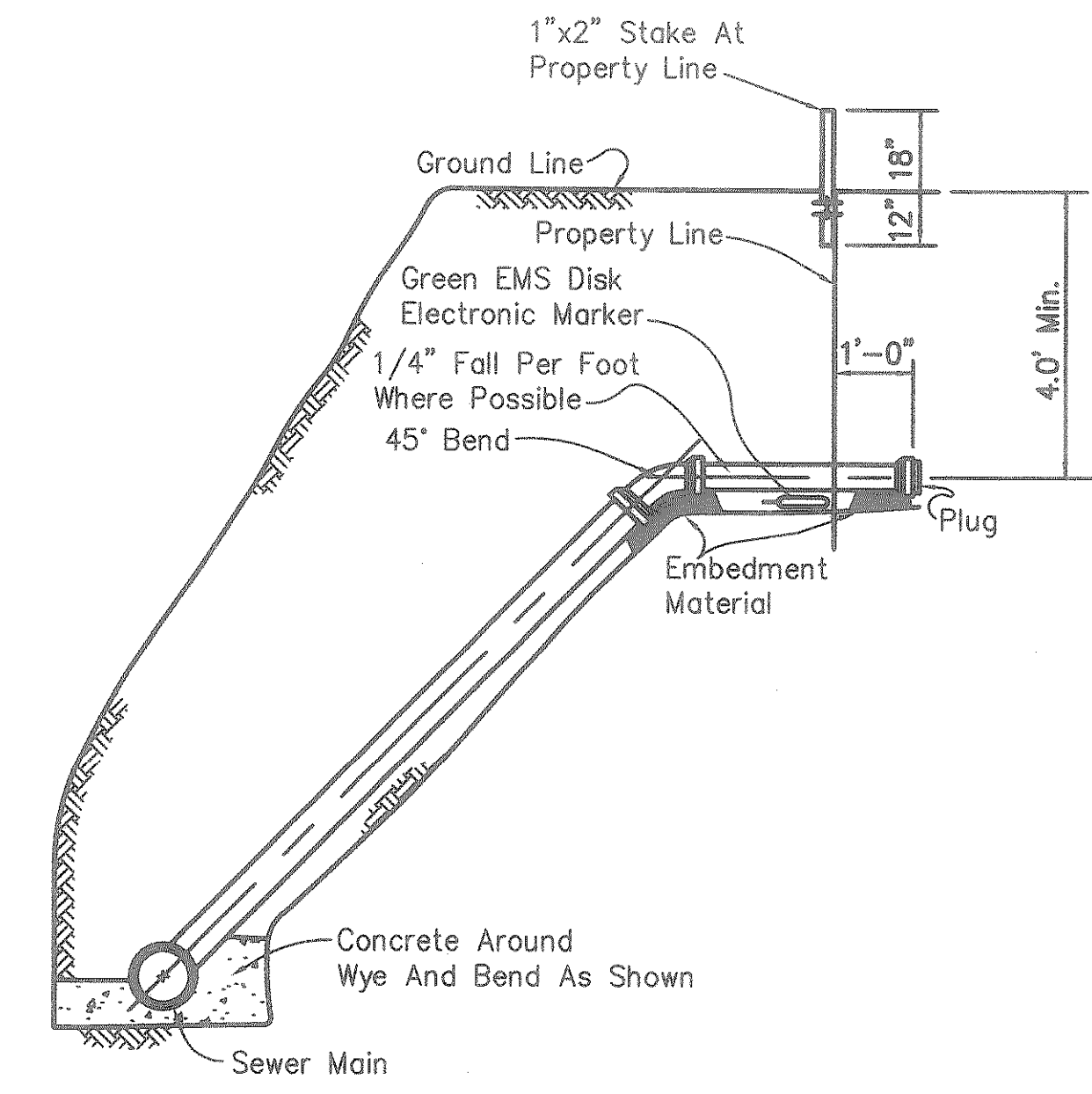


Note: Cast in place manhole shall be similar in shape and dimensions as shown. Applicable cast-in-place details shall be approved by the City. Top part of manhole may be eccentric when approved by the City. Manhole steps to be spaced vertically at 18" center/center and stagger same. Concrete above base (foundation) to be 4000 PSI class. See specifications for more details.



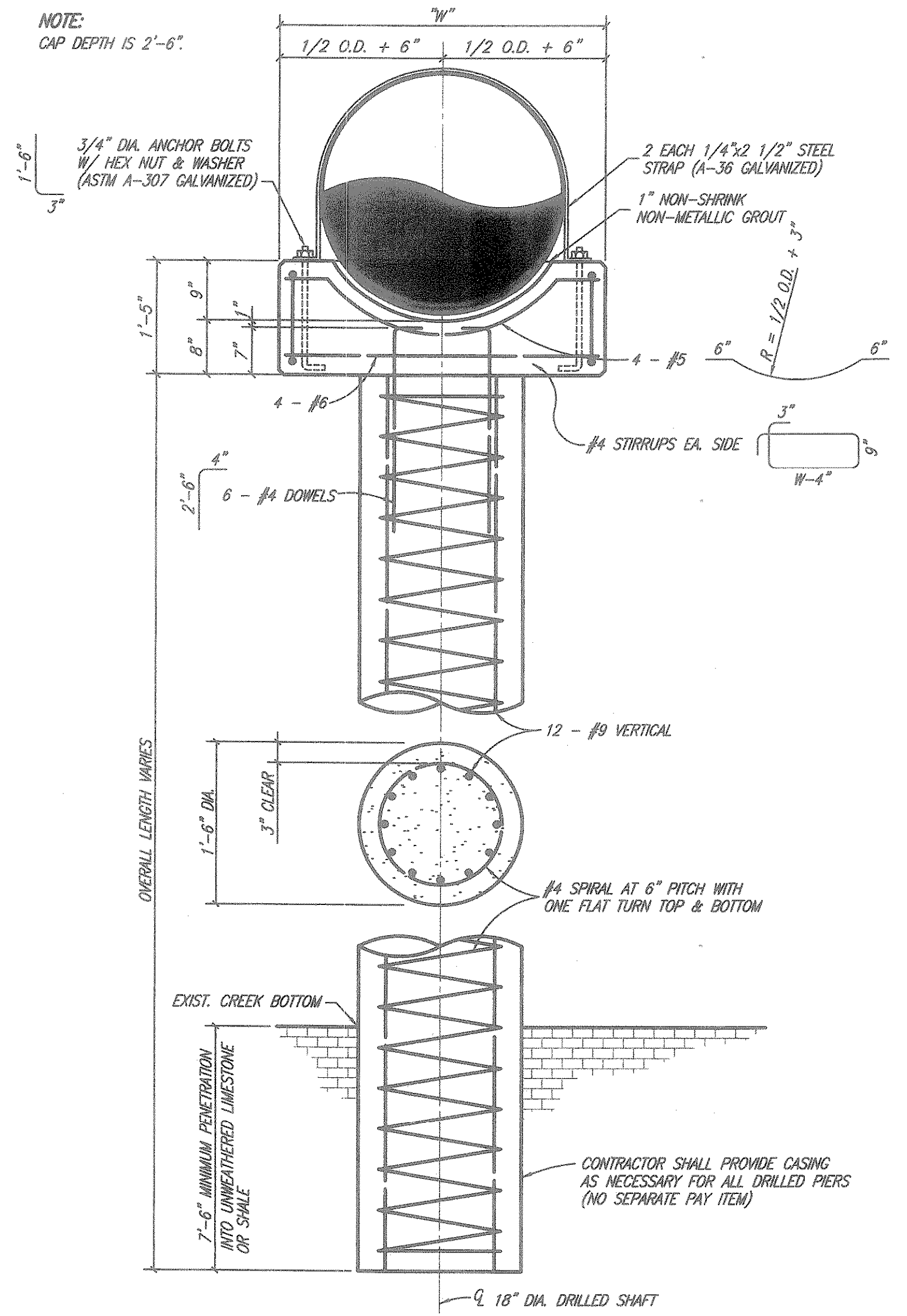
SECTION A-A TYPICAL DETAILS PRE-CAST CONCRETE MANHOLE
SECTION THRU PRE-CAST CONCRETE MANHOLE

(Depths Not Less Than 6 Feet)
See Note For Cast-In-Place Manhole



DEEP SERVICE CONNECTION
Not To Scale

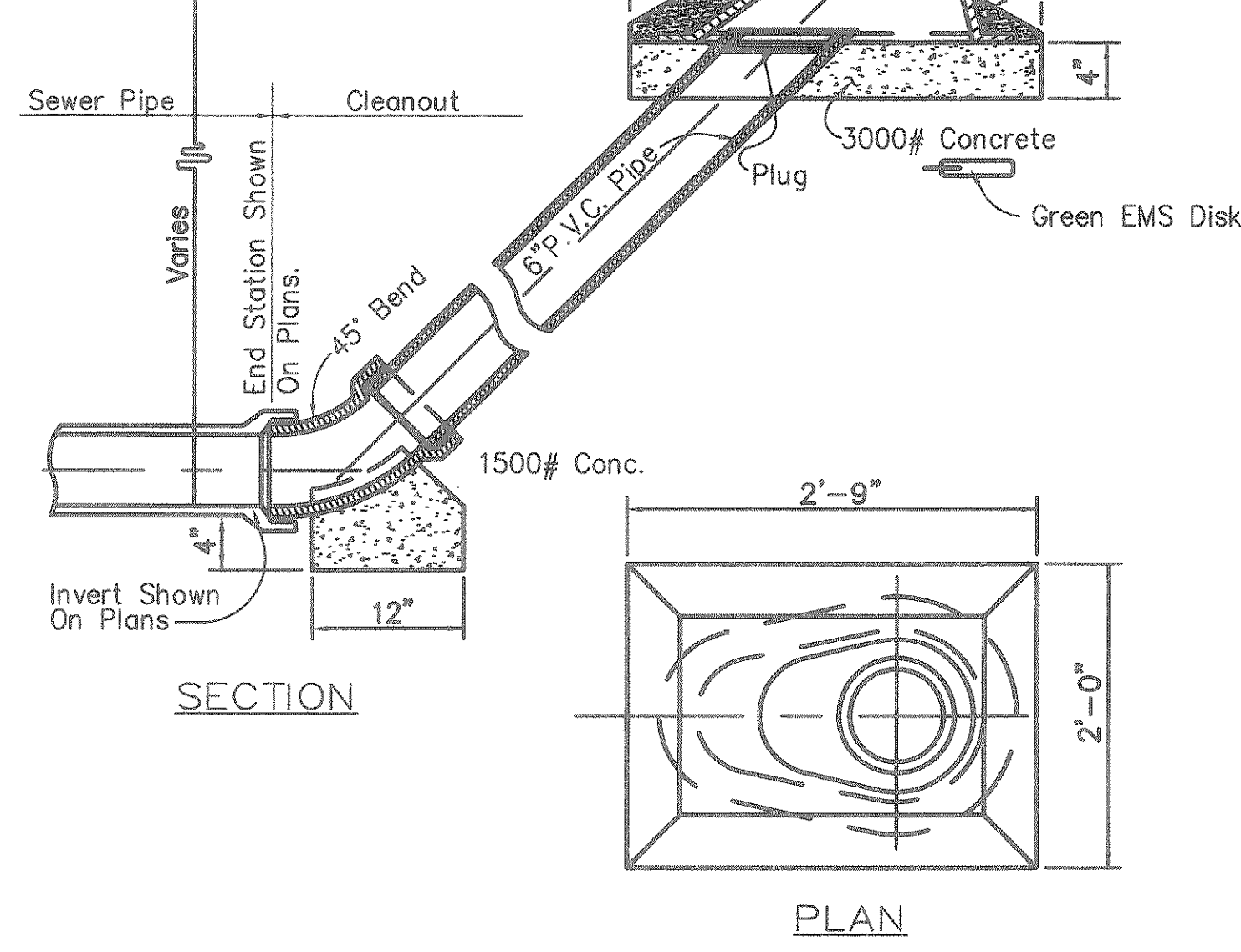
- GENERAL NOTES:**
- NO SUBSURFACE INFORMATION IS PROVIDED HEREIN. THE CONTRACTOR IS FULLY RESPONSIBLE FOR DETERMINING SUBSURFACE CONDITIONS.
 - DESIGN LINE LOADS: STREAMFLOW-- 12 FT./SEC. (CONSERVATIVE)
 - CONCRETE SHALL HAVE SAND AND GRAVEL OR CRUSHED STONE AGGREGATES, TYPE 1 PORTLAND CEMENT, AND A DESIGNATED COMPRESSIVE STRENGTH OF 4000 P.S.I. IN 28 DAYS. NORMAL WEIGHT AGGREGATE SHALL CONFORM TO THE REQUIREMENTS OF ASTM C33.
 - CHAMFER ALL EXPOSED CONCRETE EDGES 3/4".
 - ALL CONCRETE REINFORCING BARS SHALL BE OF DOMESTIC MANUFACTURE AND SHALL CONFORM TO THE REQUIREMENTS OF ASTM A615, GRADE 60. FIELD BENT DOWELS AND #3 BARS (WHEN USED AS STIRRUPS) SHALL CONFORM TO THE REQUIREMENTS OF ASTM A615, GRADE 40.
 - WELDED JOINTS SHALL CONFORM TO, AND BE TESTED IN ACCORDANCE WITH THE AWWA STANDARD FOR FIELD WELDING FOR STEEL WATER PIPE, AWWA STANDARD C206.
 - CONCRETE SHALL BE PLACED IN PIER HOLES WITHIN 8 HOURS OF COMPLETION OF DRILLING. IF CONCRETE IS NOT PLACED WITHIN 8 HOURS, THEN THE PIER HOLE SHALL BE EXTENDED AN ADDITIONAL 8 FEET DOWNWARD. CASING OF THE PIER HOLES MAY BE REQUIRED BY FIELD CONDITIONS. EXTRA DEPTH AND CASING SHALL BE PROVIDED AT CONTRACTOR'S EXPENSE.
 - CONTRACTOR SHALL USE PVC FOR THE CARRIER PIPE AND ALL RELATED COST SHALL BE INCLUDED IN BID PRICE.
 - CARRIER PIPE SHALL BE INSTALLED WITH SPACERS AS SHOWN ON BORING WITH ENCASUREMENT DETAIL SHEET 6.
 - BOTTOM OF DRILLED SHAFTS SHOWN FOR ILLUSTRATIVE AND BIDDING PURPOSES ONLY. THE REQUIRED LENGTH FOR THE DRILLED SHAFTS SHALL BE BASED ON THE FOLLOWING CRITERIA:
(A) MINIMUM LENGTH BELOW CHANNEL BOTTOM - 12'-0"
(B) MINIMUM PENETRATION INTO UNWEATHERED LIMESTONE - 7'-6"
THE REQUIRED LENGTH OF THE DRILLED SHAFTS SHALL BE THE LONGEST LENGTH THAT CAN BE OBTAINED USING THE ABOVE LISTED CRITERIA. REQUIRED LENGTHS OF DRILLED SHAFTS SHALL BE DETERMINED DURING DRILLING OPERATIONS.
 - STEEL PIPE SHALL CONFORM TO THE REQUIREMENTS OF ASTM A53, GRADE B AND MINIMUM WALL THICKNESS SHALL BE 3/8".
 - ALL ITEMS OTHER THAN DRILLED SHAFT AND PIER BELOW FINISHED GRADE ARE TO BE INCLUDED IN LUMP SUM BID PRICE.
 - ALL FERROUS METALS IN AREAL CROSSINGS SHALL BE PAINTED IN ACCORDANCE WITH THE SPECIFICATIONS.



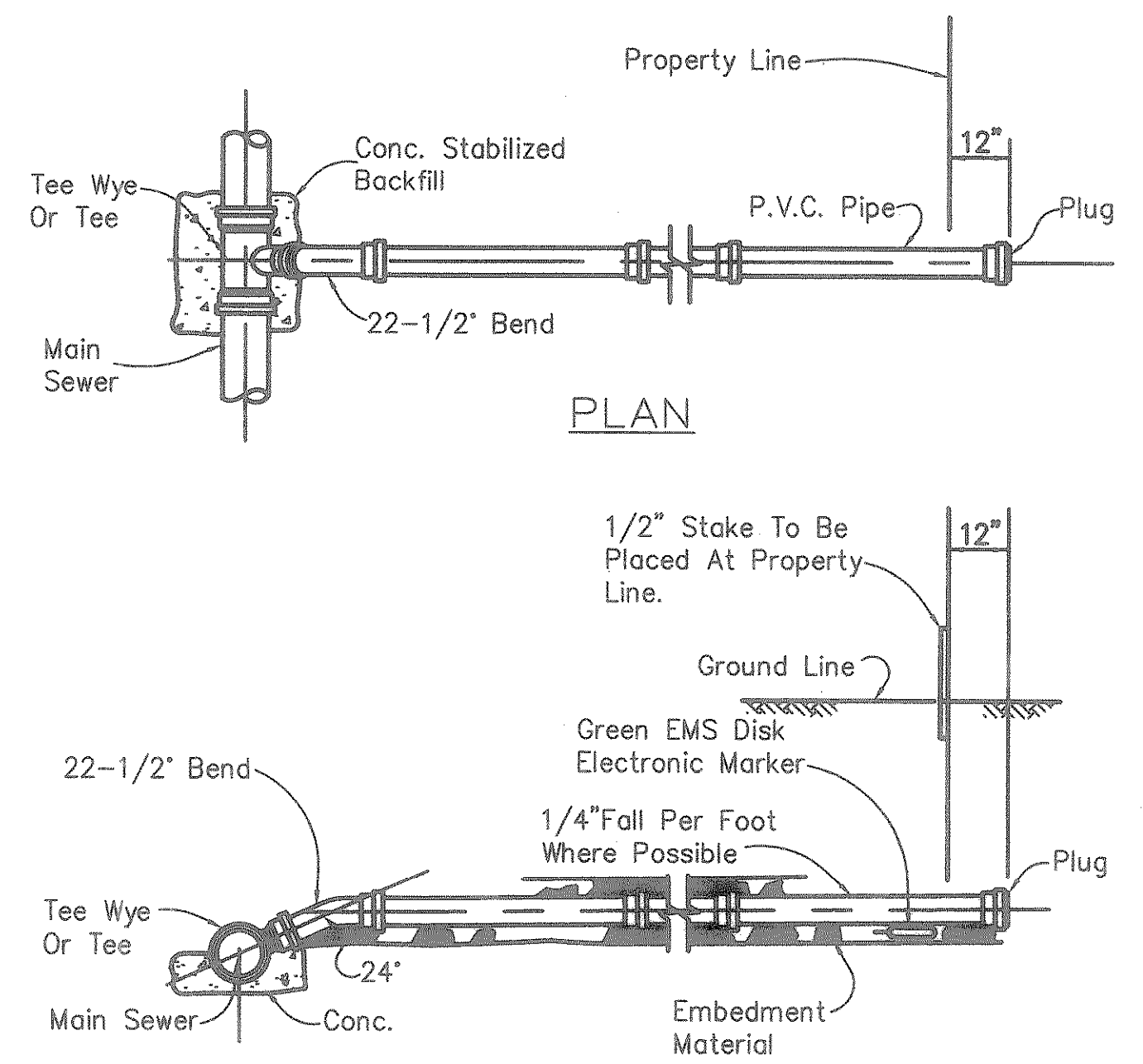
AERIAL CROSSING SUPPORT DETAIL FOR 18" PIER
N.T.S.

REVISED TO CONFORM TO CONSTRUCTION RECORDS
BY G.C.H. DATE 12/07/2000

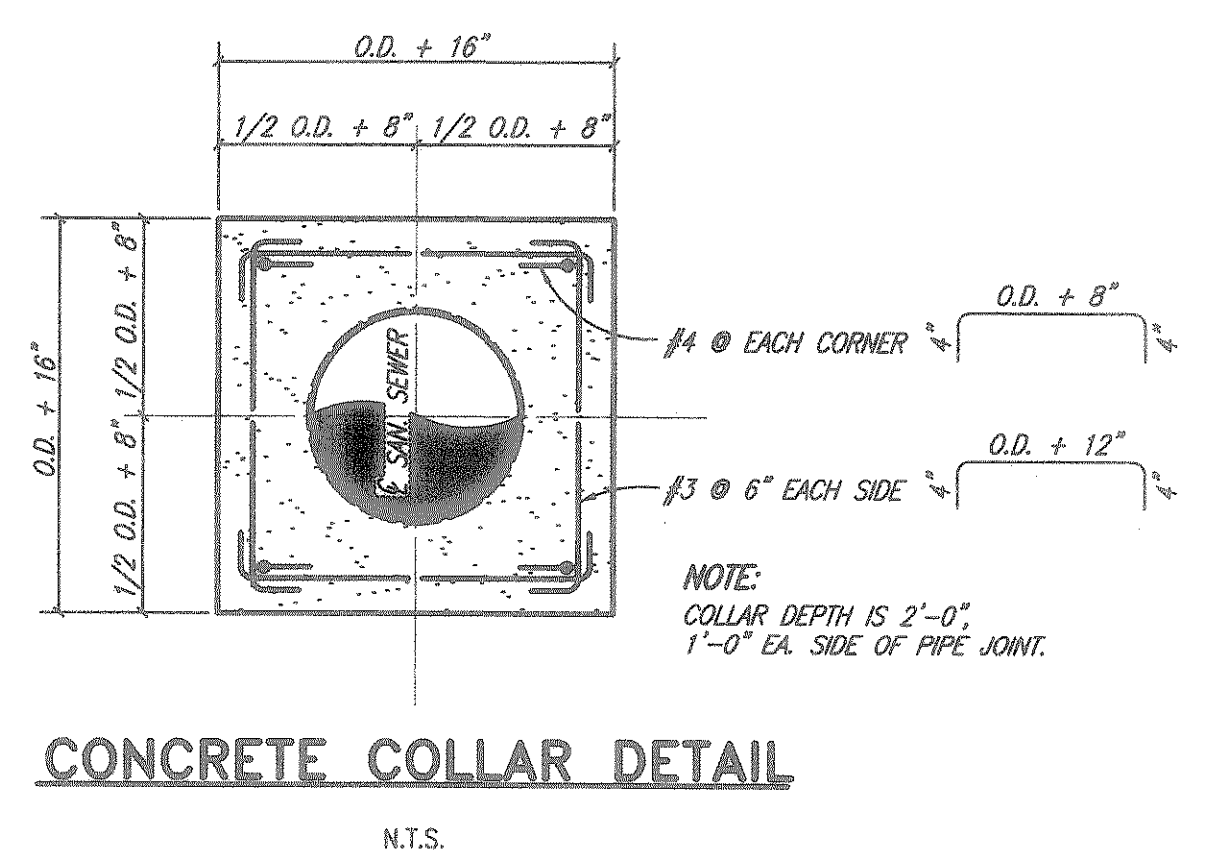
These plans and related specifications were prepared for construction of this specific project only. Reuse of these documents is not permitted without written authorization of Shimek, Jacobs & Finklea, L.L.P.



SEWER CLEANOUT
Not To Scale

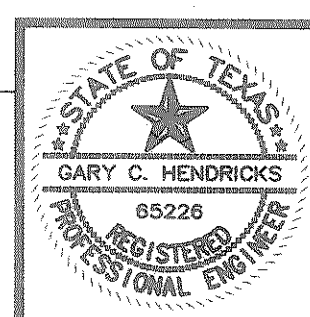


STANDARD SERVICE CONNECTION
Not To Scale



CONCRETE COLLAR DETAIL
N.T.S.

THESE DOCUMENTS ARE FOR BIDDING, CONSTRUCTION, AND PERMIT PURPOSES.
DATE: 11/9/98



CITY OF ROCKWALL, TEXAS

SQUABLE CREEK TRUNK SEWER STANDARD DETAILS

SHIMEK, JACOBS & FINKLEA, L.L.P.
CONSULTING ENGINEERS
Dallas, Texas

DESIGNED BY: G.C.H.	PROJECT: 97129	SHEET NO. 10
DRAWN BY: S. J. & F.	DATE: NOVEMBER, 1998	OF 12 SHEETS

97129-10.DWG 11/02/98 KAB BLOCKS PIER1B, COLLAR, GENNOTES