

H.B. Jones Survey
Abstract No. 124

MATCH LINE STA. 11+00

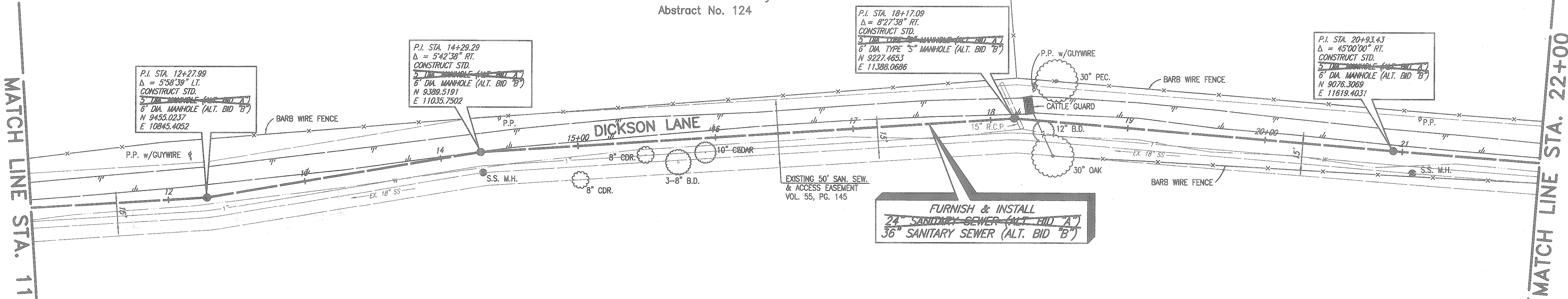
MATCH LINE STA. 22+00

P.I. STA. 12+27.99
Δ = 5°58'39" LT.
CONSTRUCT STD.
5' DIA. MANHOLE (ALT. BID "A")
6' DIA. MANHOLE (ALT. BID "B")
N 9455.0237
E 10845.4052

P.I. STA. 14+29.29
Δ = 5°42'38" RT.
CONSTRUCT STD.
5' DIA. MANHOLE (ALT. BID "A")
6' DIA. MANHOLE (ALT. BID "B")
N 9389.5191
E 11035.7502

P.I. STA. 18+17.09
Δ = 8°27'38" RT.
CONSTRUCT STD.
5' DIA. MANHOLE (ALT. BID "A")
6' DIA. TYPE "S" MANHOLE (ALT. BID "B")
N 9227.4653
E 11388.0686

P.I. STA. 20+93.43
Δ = 45°00'00" RT.
CONSTRUCT STD.
5' DIA. MANHOLE (ALT. BID "A")
6' DIA. MANHOLE (ALT. BID "B")
N 9076.3069
E 11619.4031



Rockwall Heights
Vol. 947, Pg. 43

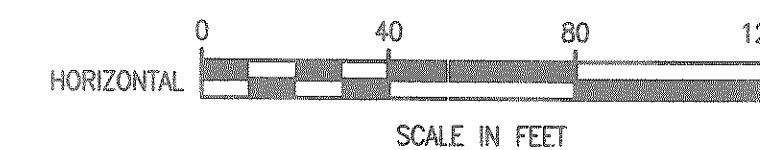
NOTES:

- BIDS FOR 24 INCH DIAMETER (ALTERNATE BID "A") AND 36 INCH DIAMETER (ALTERNATE BID "B") SANITARY SEWER FROM STA. 0+00 TO STA. 24+45.99 WILL BE EVALUATED BY THE CITY.
- MANHOLE FOR 36 INCH DIAMETER ALTERNATE BID SHALL BE 6 FOOT DIAMETER AS PROVIDED IN THE ALTERNATE "B" BID SCHEDULE.

ALTERNATE "A" OR
ALTERNATE "B" BID SCHEDULE

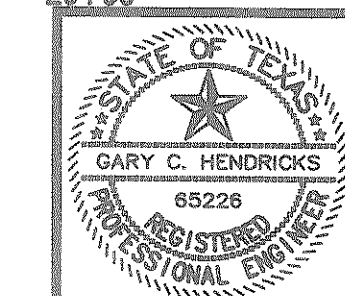
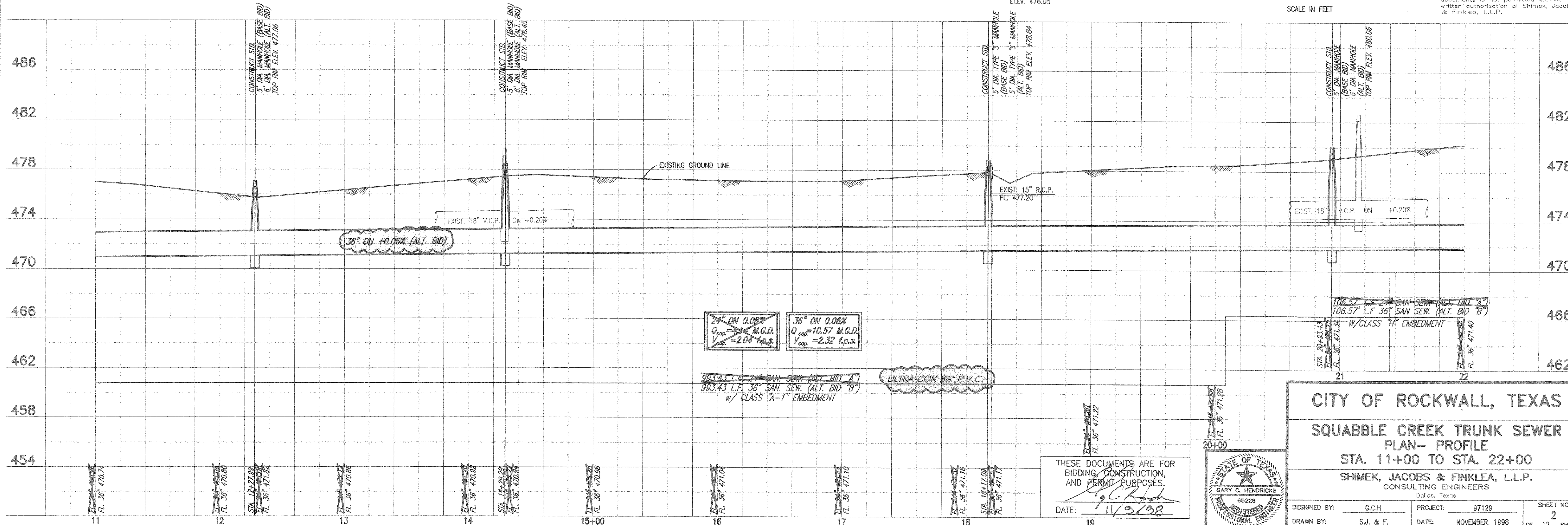
REVISED TO CONFORM
TO CONSTRUCTION RECORDS
BY G.C.H. DATE 12/06/2000

BENCHMARK: T.B.M. S-1 "X" CUT ON THE SOUTHWEST CORNER OF EXISTING INTAKE STRUCTURE OF TREATMENT PLANT. ELEV. 476.05



These plans and related specifications were prepared for construction of this specific project only. Reuse of these documents is not permitted without written authorization of Shimek, Jacobs & Finklea, L.L.P.

11/02/98 KAB BLOCKS PROF-02 ASBUILT: 12/06/2000 JPO 97129-02.DWG



CITY OF ROCKWALL, TEXAS
SQUABBLE CREEK TRUNK SEWER
PLAN- PROFILE
STA. 11+00 TO STA. 22+00
SHIMEK, JACOBS & FINKLEA, L.L.P.
CONSULTING ENGINEERS
Dallas, Texas

DESIGNED BY: G.C.H.	PROJECT: 97129	SHEET NO. 2
DRAWN BY: S.J. & F.	DATE: NOVEMBER, 1998	OF 12 SHEETS

THESE DOCUMENTS ARE FOR BIDDING, CONSTRUCTION, AND PERMIT PURPOSES.
DATE: 11/9/98