

NORTH TEXAS
MUNICIPAL WATER DISTRICT
SQUABBLE CREEK
WASTEWATER TREATMENT PLANT
Vol. 55, Pg. 365

ALTERNATE "A" OR
ALTERNATE "B" BID SCHEDULE

Rockwall Heights
Vol. 1082, Pg. 140

Rockwall Heights
Vol. 947, Pg. 43

MATCH LINE STA. 11+00

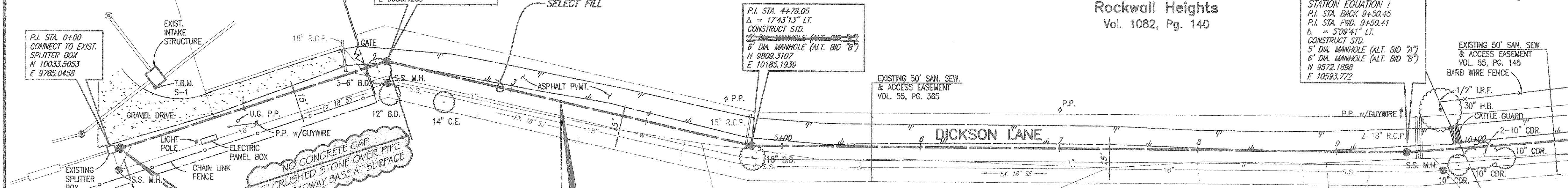
P.I. STA. 0+00
CONNECT TO EXIST.
SPLITTER BOX
N 10033.5053
E 9785.0458

P.I. STA. 2+07.97
Δ = 31'00"14" RT.
CONSTRUCT STD.
5" DIA. MANHOLE (ALT. BID "A")
6" DIA. MANHOLE (ALT. BID "B")
N 9992.1499
E 9986.4209

P.I. STA. 4+78.05
Δ = 17'43"13" LT.
CONSTRUCT STD.
5" DIA. MANHOLE (ALT. BID "A")
6" DIA. MANHOLE (ALT. BID "B")
N 9809.3107
E 10185.1939

STATION EQUATION!
P.I. STA. BACK 9+50.45
P.I. STA. FWD. 9+50.41
Δ = 5'09"41" LT.
CONSTRUCT STD.
5" DIA. MANHOLE (ALT. BID "A")
6" DIA. MANHOLE (ALT. BID "B")
N 9572.1889
E 10593.772

EXISTING 50' SAN. SEW.
& ACCESS EASEMENT
VOL. 55, PG. 145
BARB WIRE FENCE



NO CONCRETE CAP
6\"/>

CHANGE ORDER NO. 1
STA. 0+06
CONSTRUCT 6-FT. DIA. MANHOLE
RELOCATE 65 L.F. SLUDGE RETURN LINE
(SEE DETAIL THIS SHEET)

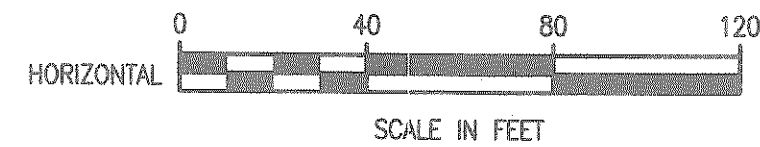
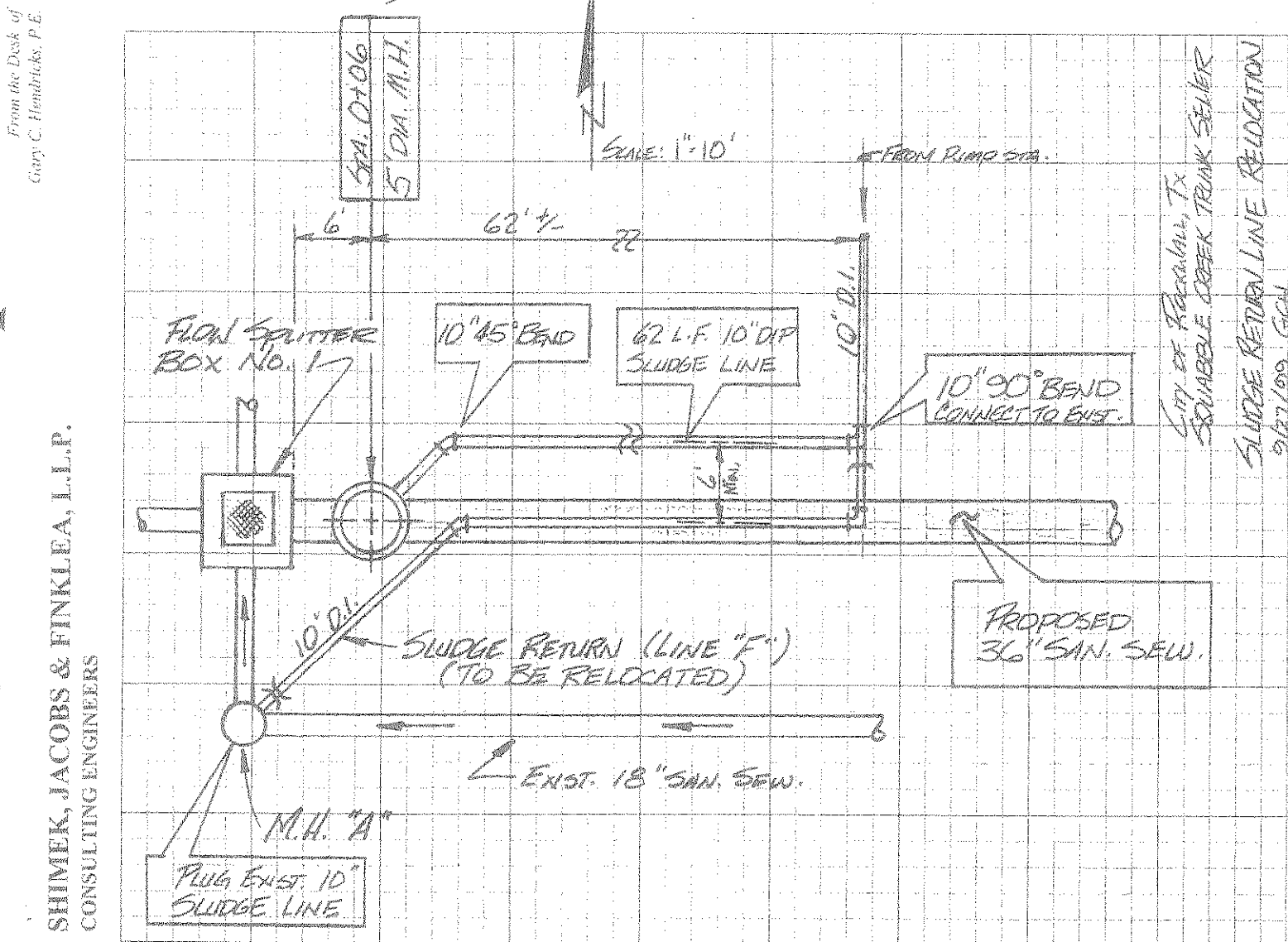
FURNISH & INSTALL
24\"/>

- NOTES:
- BIDS FOR 24 INCH DIAMETER (ALTERNATE BID "A") AND 36 INCH DIAMETER (ALTERNATE BID "B") SANITARY SEWER FROM STA. 0+00 TO STA. 2+45.99 WILL BE EVALUATED BY THE CITY.
 - MANHOLE FOR 36 INCH DIAMETER ALTERNATE BID SHALL BE 6 FOOT DIAMETER AS PROVIDED IN THE ALTERNATE "B" BID SCHEDULE.

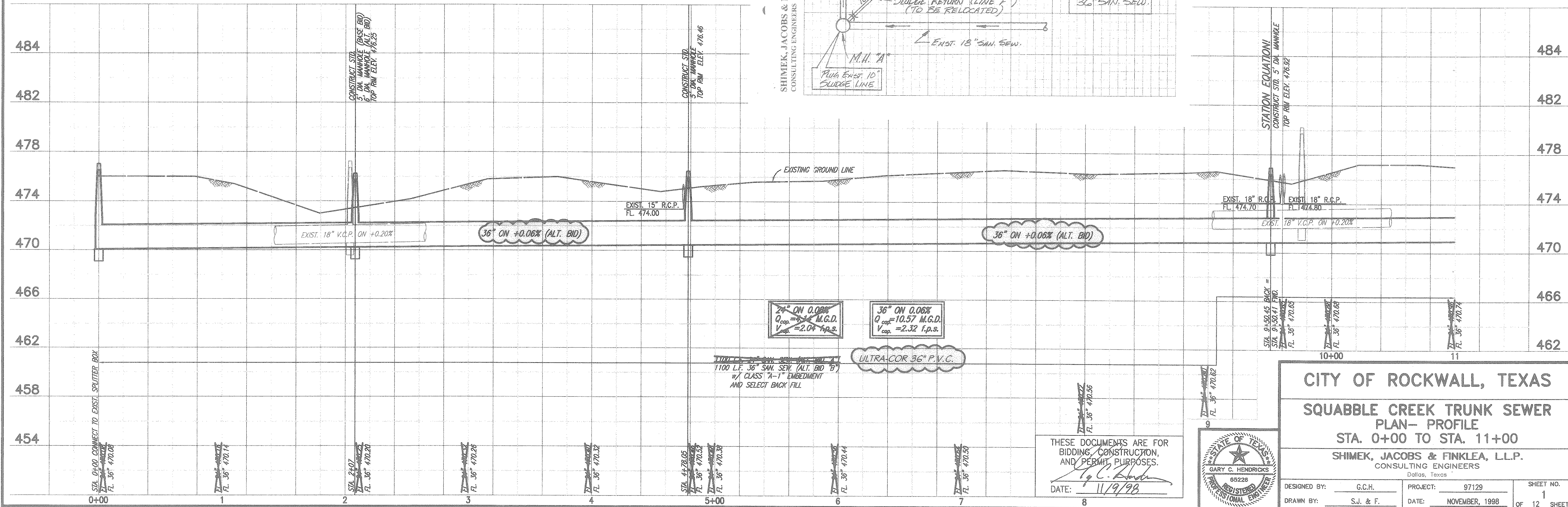
H.B. Jones Survey
Abstract No. 124

REVISED TO CONFORM
TO CONSTRUCTION RECORDS
BY G.C.F. DATE 12/06/2000

BENCHMARK: T.B.M. S-1 "□" CUT ON THE SOUTHWEST CORNER OF EXISTING INTAKE STRUCTURE OF TREATMENT PLANT. ELEV. 476.05



These plans and related specifications were prepared for construction of this specific project only. Reuse of these documents is not permitted without written authorization of Shimek, Jacobs & Finklea, L.L.P.



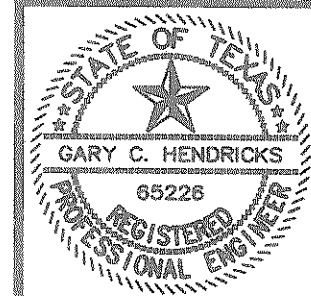
24\"/>

36\"/>

ULTRA-COR 36\"/>

TOTAL SAN. SEW. (ALT. BID "A")
1100 L.F. 36\"/>

THESE DOCUMENTS ARE FOR
BIDDING, CONSTRUCTION,
AND PERMIT PURPOSES.
G.C.F.
DATE: 11/9/98



CITY OF ROCKWALL, TEXAS
SQUABBLE CREEK TRUNK SEWER
PLAN-PROFILE
STA. 0+00 TO STA. 11+00

SHIMEK, JACOBS & FINKLEA, L.L.P.
CONSULTING ENGINEERS
Dallas, Texas

DESIGNED BY: G.C.H. PROJECT: 97129 SHEET NO. 1
DRAWN BY: S.J. & F. DATE: NOVEMBER, 1998 OF 12 SHEETS

97129-01.DWG 11/02/98 MAB BLOCKS PROF-01 ASBUILT: 12/06/2000 JPO