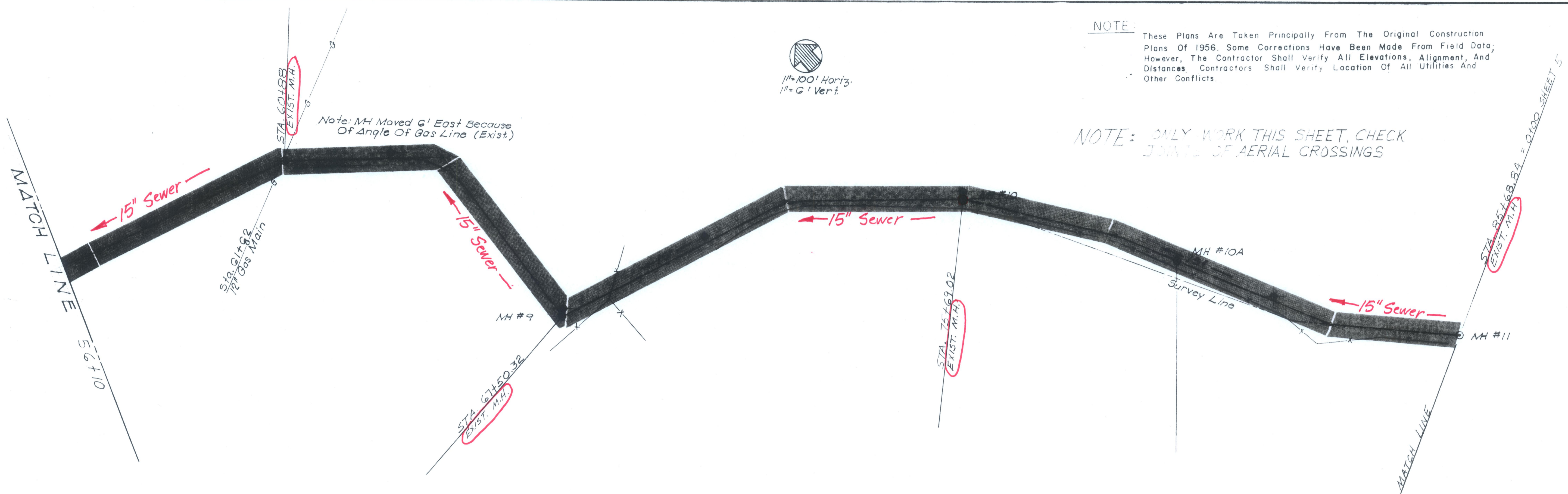


1" = 100' Horiz.
1" = 6' Vert.

NOTE:

These Plans Are Taken Principally From The Original Construction Plans Of 1956. Some Corrections Have Been Made From Field Data. However, The Contractor Shall Verify All Elevations, Alignment, And Distances. Contractors Shall Verify Location Of All Utilities And Other Conflicts.

NOTE: ONLY WORK THIS SHEET, CHECK JOINTS OF AERIAL CROSSINGS



Note: M.H. Moved 6' East Because Of Angle Of Gas Line (Exist.)

B.M. "D" Cut On Top Of Conc. Curb @ S.E. Corner Of Old Disposal Plant. Elev. 493.40 (Exist.)

