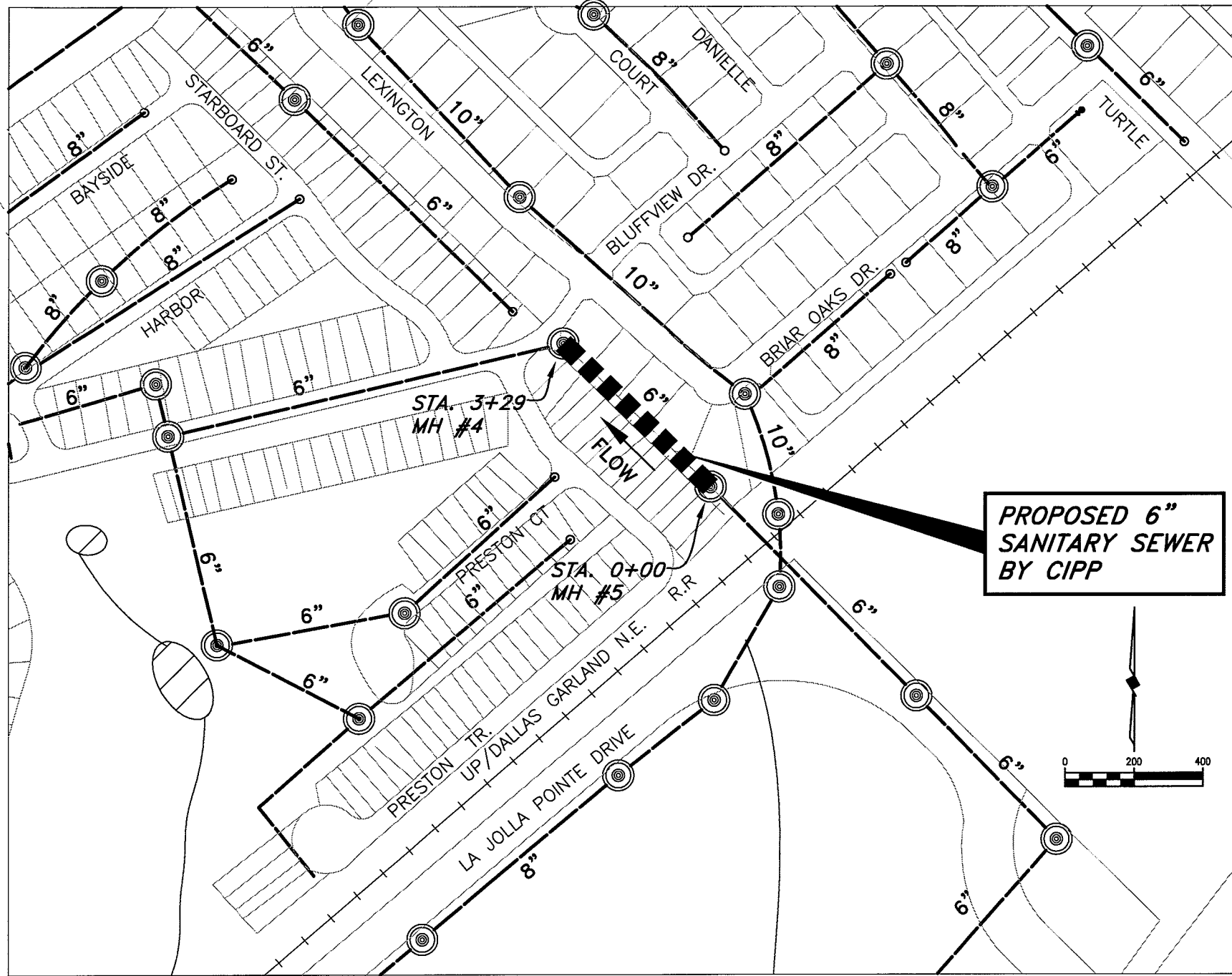


These plans and related specifications were prepared for construction of this specific project only. Reuse of these documents is not permitted without written authorization of Birkhoff, Hendricks & Conway, L.L.P.



**PLAN**

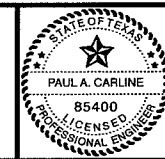
**Internal Television Inspection Operator Logs**

<b>From Manhole:</b> 5	<b>Date:</b> 9/11/2008	<b>Weather:</b> DRY
<b>Comments:</b>	<b>Basin ID:</b> Buffalo Creek	
<b>To Manhole:</b> 4	<b>Pipe Size (in):</b> 6	<b>Pipe Type:</b> VCP
<b>Line Length (ft):</b> 328.5		
<b>Filed Against Flow:</b> No	<b>From MH Depth (ft):</b> 0	<b>To MH Depth (ft):</b> 0.0
Distance Reading (ft)	Description	Clock Position
0	BEGIN AT MH 5	N/A
29.3	FACTORY TAP	10
51	FACTORY TAP	9
75.6	MATERIAL CHANGE TO PVC	N/A
80.9	FACTORY TAP	10
82.1	MATERIAL CHANGE TO CLAY	N/A
102.4	FACTORY TAP	9
128.2	FACTORY TAP	9
141	LONGITUDINAL CRACK	3
144.6	LONGITUDINAL CRACK	1
154.1	FACTORY TAP	10
178.4	MEDIUM ROOTS	12
179.8	FACTORY TAP	10
205.1	FACTORY TAP	10
225.6	MULTIPLE CRACKS	12
230.9	FACTORY TAP	9
256.7	FACTORY TAP	9
260.8	LIGHT ROOTS	2
282.0	FACTORY TAP, CIRCUMFRENTIAL FRACTURE	12
286.5	CIRCUMFRENTIAL CRACK	9
307.7	FACTORY TAP	9
328.5	END AT MH 4	N/A

**NOTE:**  
~~FIRST 5 L.F. OF ALL SERVICES SHALL BE LINED WITH CIPP USING TOPHAT METHOD. DISTANCE SHALL BE MEASURED FROM 6" SANITARY SEWER.~~  
**NOT CONSTRUCTED**

*This record drawing is a compilation of the sealed engineering drawing for this project, modified by addenda, change orders and information furnished by the contractor. The information shown on the record drawings that was provided by the contractor or others not associated with the design engineer cannot be verified for accuracy or completeness. This original sealed drawings are on file at the offices of Birkhoff, Hendricks & Conway, L.L.P.*  
 BY P.A.C. DATE 10/14/09

**BIRKHOFF, HENDRICKS & CONWAY, L.L.P.**  
 PROFESSIONAL ENGINEERS  
 Texas Firm F526  
 11910 Greenville Ave., Suite 600  
 Dallas, Texas 75243 (214)  
 361-7900



*[Handwritten Signature]*  
 10/14/09

**CITY OF ROCKWALL, TEXAS**  
 LAKESIDE VILLAGE SANITARY SEWER REHABILITATION  
 LAKESIDE VILLAGE SANITARY SEWER LINE  
 PLAN  
 STA. 0+00 TO STA. 3+29 (LINE "C")

BHC  
 PROJECT NO.  
 2008-130  
 October, 2009  
 SHEET NO.  
**8**