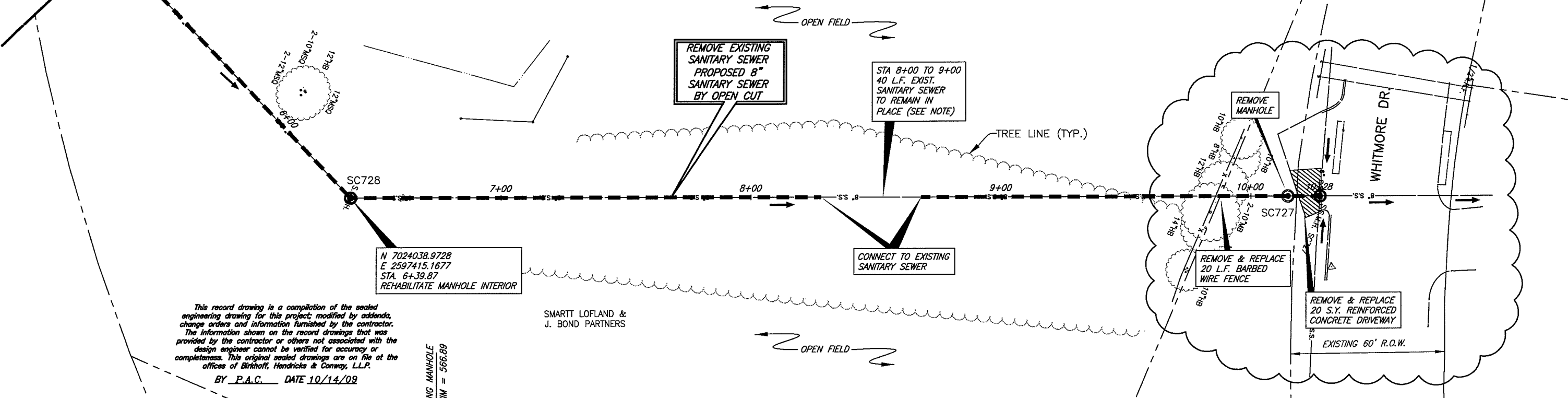
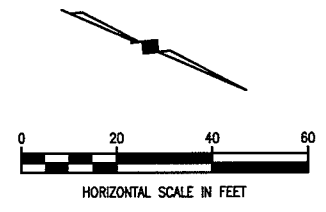


N 7023910.5570, E 2597359.7244  
MATCH LINE STA. 5+00

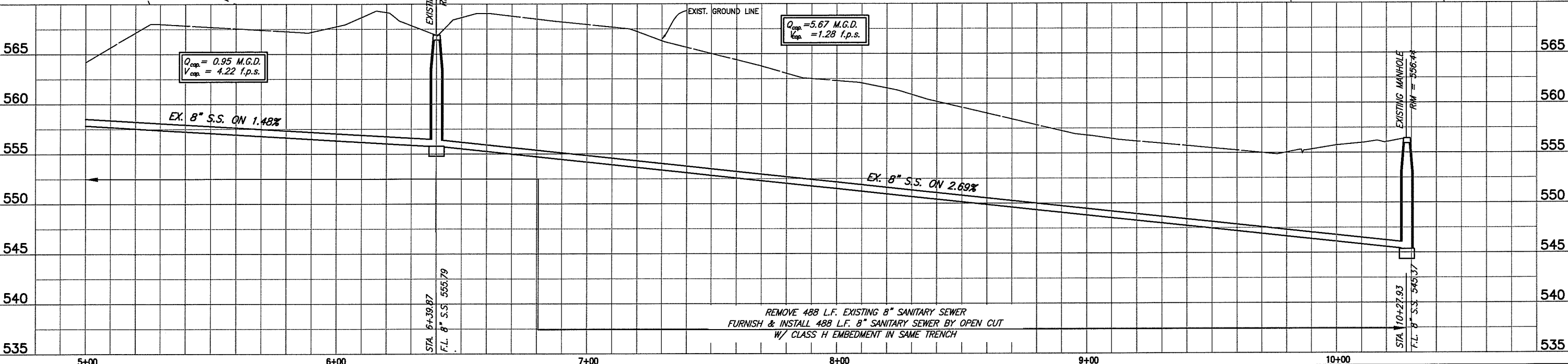
**NOTE:**  
APPROXIMATELY 40 L.F. OF NEW SANITARY SEWER WAS  
INSTALLED SOMEWHERE IN THE AREA BETWEEN STA. 8+00 &  
9+00 IN 2007. THIS SANITARY SEWER SHALL REMAIN  
IN PLACE. CONTRACTOR SHALL VERIFY LOCATION PRIOR  
TO CONSTRUCTION.

SMARTT LOFLAND &  
J. BOND PARTNERS



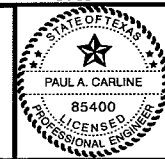
This record drawing is a compilation of the sealed  
engineering drawing for this project; modified by addenda,  
change orders and information furnished by the contractor.  
The information shown on the record drawings that was  
provided by the contractor or others not associated with the  
design engineer cannot be verified for accuracy or  
completeness. This original sealed drawings are on file at the  
offices of Birkhoff, Hendricks & Conway, L.L.P.  
BY P.A.C. DATE 10/14/09

SMARTT LOFLAND &  
J. BOND PARTNERS



These plans and related specifications were prepared for construction of this specific project only. Reuse of these documents is not permitted without written authorization of Birkhoff, Hendricks, & Conway, L.L.P.

**BIRKHOFF, HENDRICKS & CONWAY, L.L.P.**  
CONSULTING ENGINEERS  
11910 Greenville Ave., Suite 600  
Dallas, Texas  
(214) 361-7900



*[Signature]*  
2/23/09

**CITY OF ROCKWALL, TEXAS**  
SQUABBLE CREEK INTERCEPTOR, PHASE II REHABILITATION  
SQUABBLE CREEK SANITARY SEWER LINE  
PLAN AND PROFILE  
STA. 10+00 TO STA. 10+28 (LINE B)

BHC  
PROJECT NO.  
2008-130  
February, 2009

SHEET NO.  
**7**