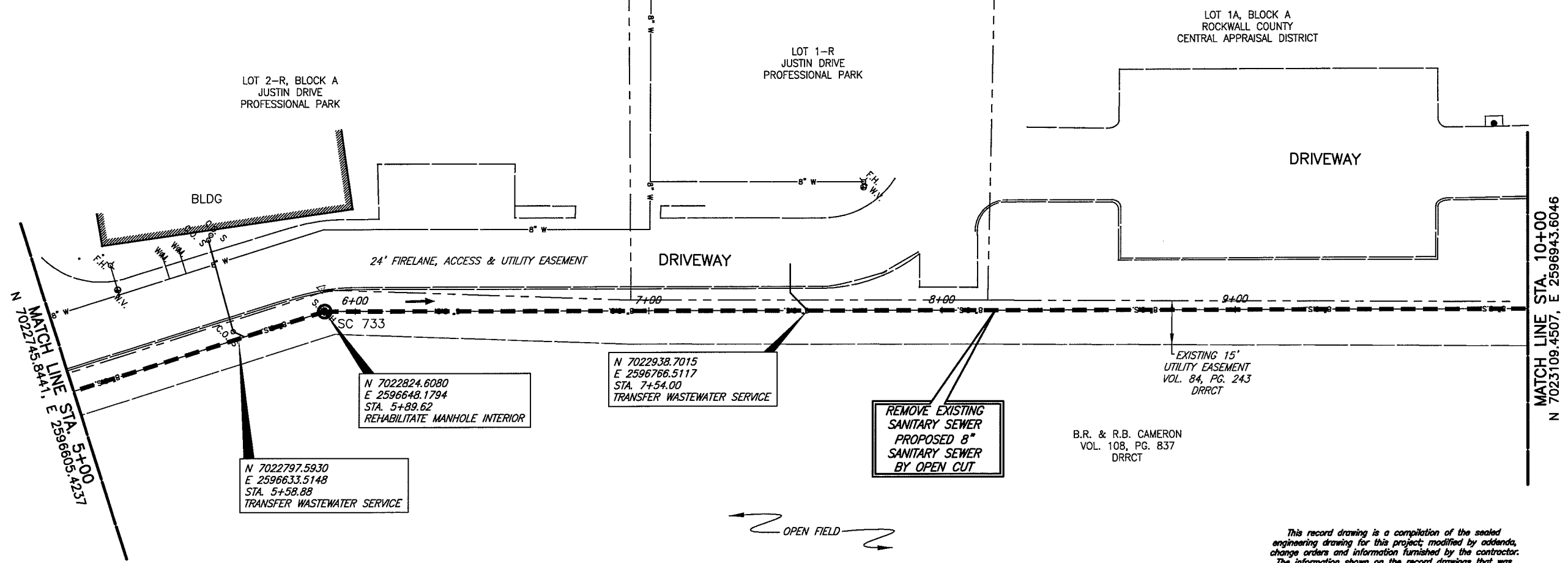


These plans and related specifications were prepared for construction of this specific project only. Reuse of these documents is not permitted without written authorization of Birkhoff, Hendricks, & Conway, L.L.P.



MATCH LINE STA. 10+00
N 7023109.4507, E 2596943.6046

MATCH LINE STA. 5+00
N 7022745.8441, E 2596605.4237

N 7022797.5930
E 2596633.5148
STA. 5+58.88
TRANSFER WASTEWATER SERVICE

N 7022824.6080
E 2596648.1794
STA. 5+89.62
REHABILITATE MANHOLE INTERIOR

N 7022938.7015
E 2596766.5117
STA. 7+54.00
TRANSFER WASTEWATER SERVICE

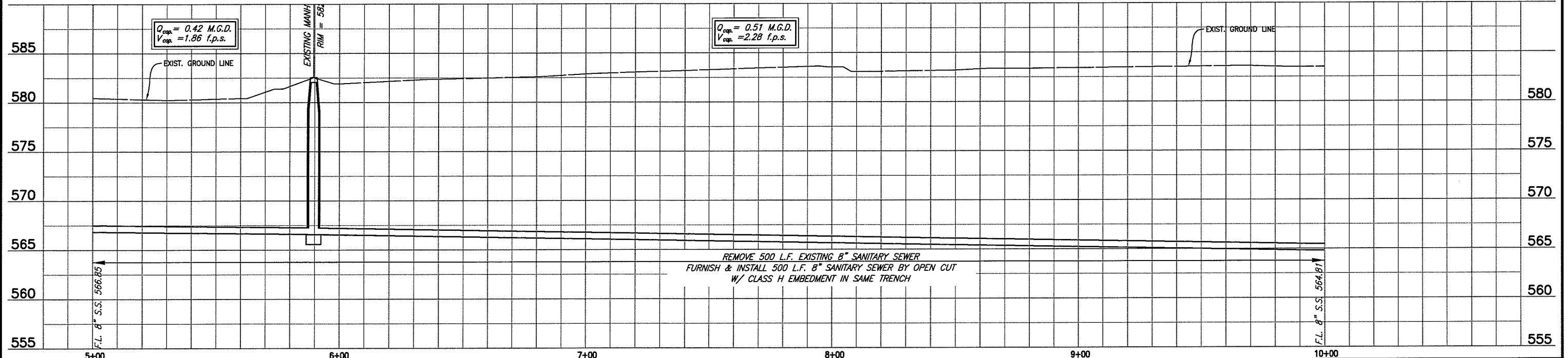
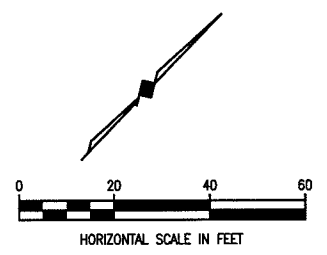
REMOVE EXISTING
SANITARY SEWER
PROPOSED 8"
SANITARY SEWER
BY OPEN CUT

B.R. & R.B. CAMERON
VOL. 108, PG. 837
DRRCT

EXISTING 15"
UTILITY EASEMENT
VOL. 84, PG. 243
DRRCT

OPEN FIELD

This record drawing is a compilation of the sealed engineering drawing for this project, modified by addenda, change orders and information furnished by the contractor. The information shown on the record drawings that was provided by the contractor or others not associated with the design engineer cannot be verified for accuracy or completeness. This original sealed drawings are on file at the offices of Birkhoff, Hendricks & Conway, L.L.P.
BY P.A.C. DATE 10/14/09

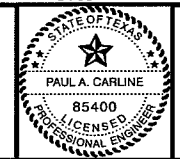


$Q_{cap} = 0.42$ M.G.D.
 $V_{cap} = 1.86$ f.p.s.

$Q_{cap} = 0.51$ M.G.D.
 $V_{cap} = 2.28$ f.p.s.

REMOVE 500 L.F. EXISTING 8" SANITARY SEWER
FURNISH & INSTALL 500 L.F. 8" SANITARY SEWER BY OPEN CUT
W/ CLASS H EMBEDMENT IN SAME TRENCH

BIRKHOFF, HENDRICKS & CONWAY, L.L.P.
CONSULTING ENGINEERS
11910 Greenville Ave., Suite 600
Dallas, Texas
(214) 361-7900



[Signature]
10/23/09

CITY OF ROCKWALL, TEXAS
SQUABBLE CREEK INTERCEPTOR, PHASE II REHABILITATION
SQUABBLE CREEK SANITARY SEWER LINE
PLAN AND PROFILE
STA. 5+00 TO STA. 10+00 (LINE A)

BHC
PROJECT NO.
2008-130
February, 2009

SHEET NO.
4