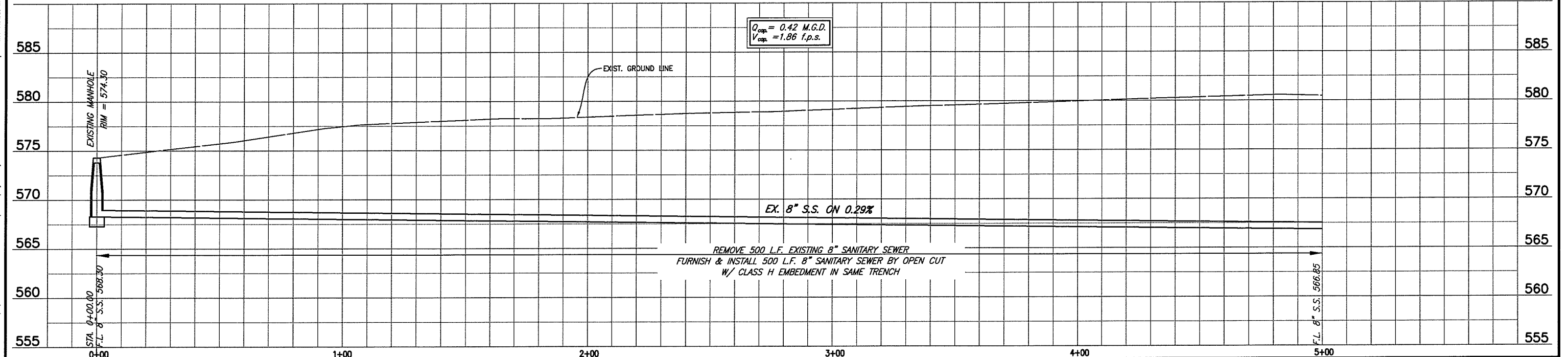
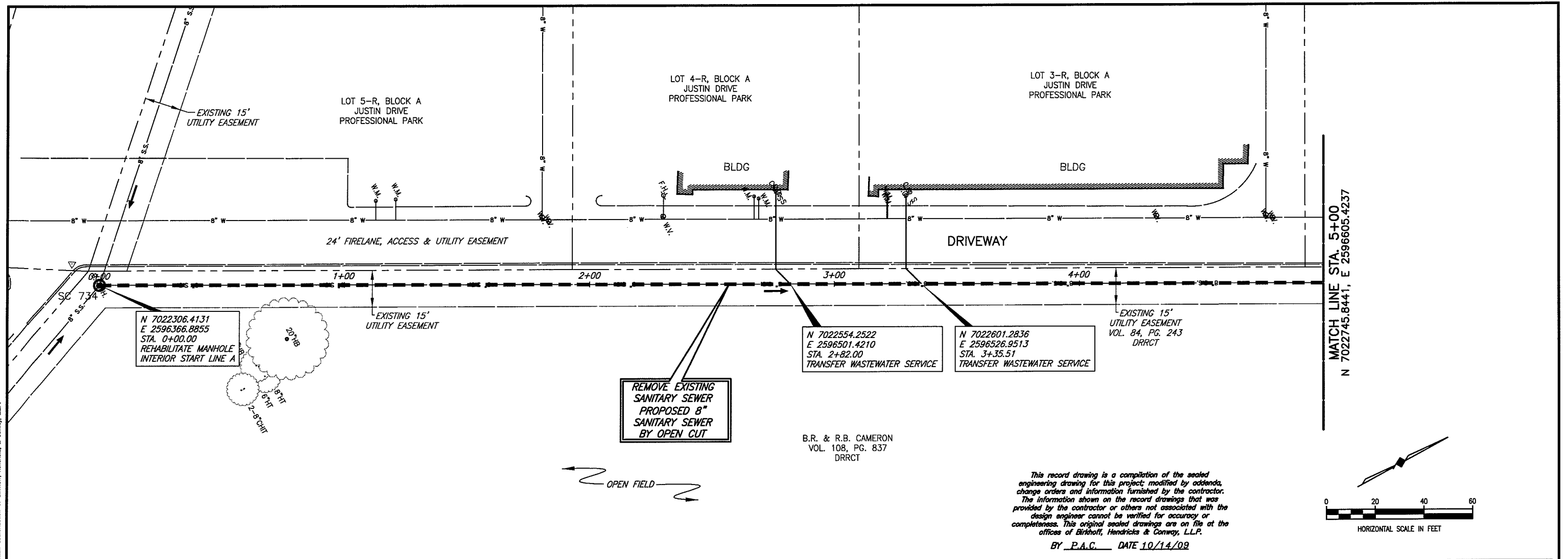
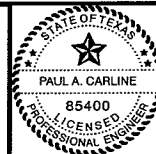


These plans and related specifications were prepared for construction of this specific project only. Reuse of these documents is not permitted without written authorization of Birkhoff, Hendricks, & Conway, L.L.P.



BIRKHOFF, HENDRICKS & CONWAY, L.L.P.
CONSULTING ENGINEERS
11910 Greenville Ave., Suite 600
Dallas, Texas
(214) 361-7900



[Signature]
2/23/09

CITY OF ROCKWALL, TEXAS
SQUABBLE CREEK INTERCEPTOR, PHASE II REHABILITATION
SQUABBLE CREEK SANITARY SEWER LINE
PLAN AND PROFILE
STA. 0+00 TO STA. 5+00 (LINE A)

BHC
PROJECT NO.
2008-130
February, 2009

SHEET NO.
3