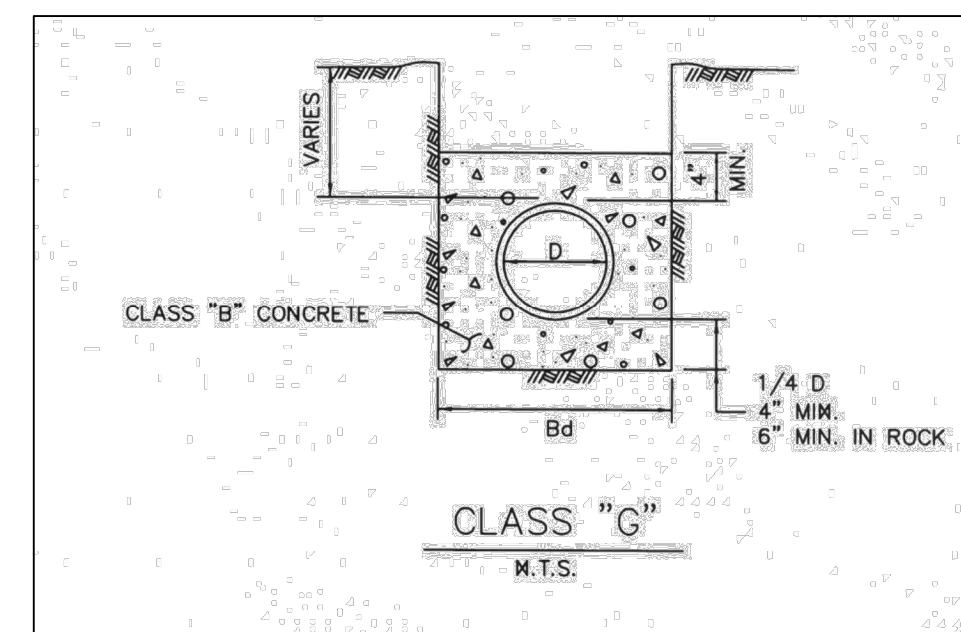
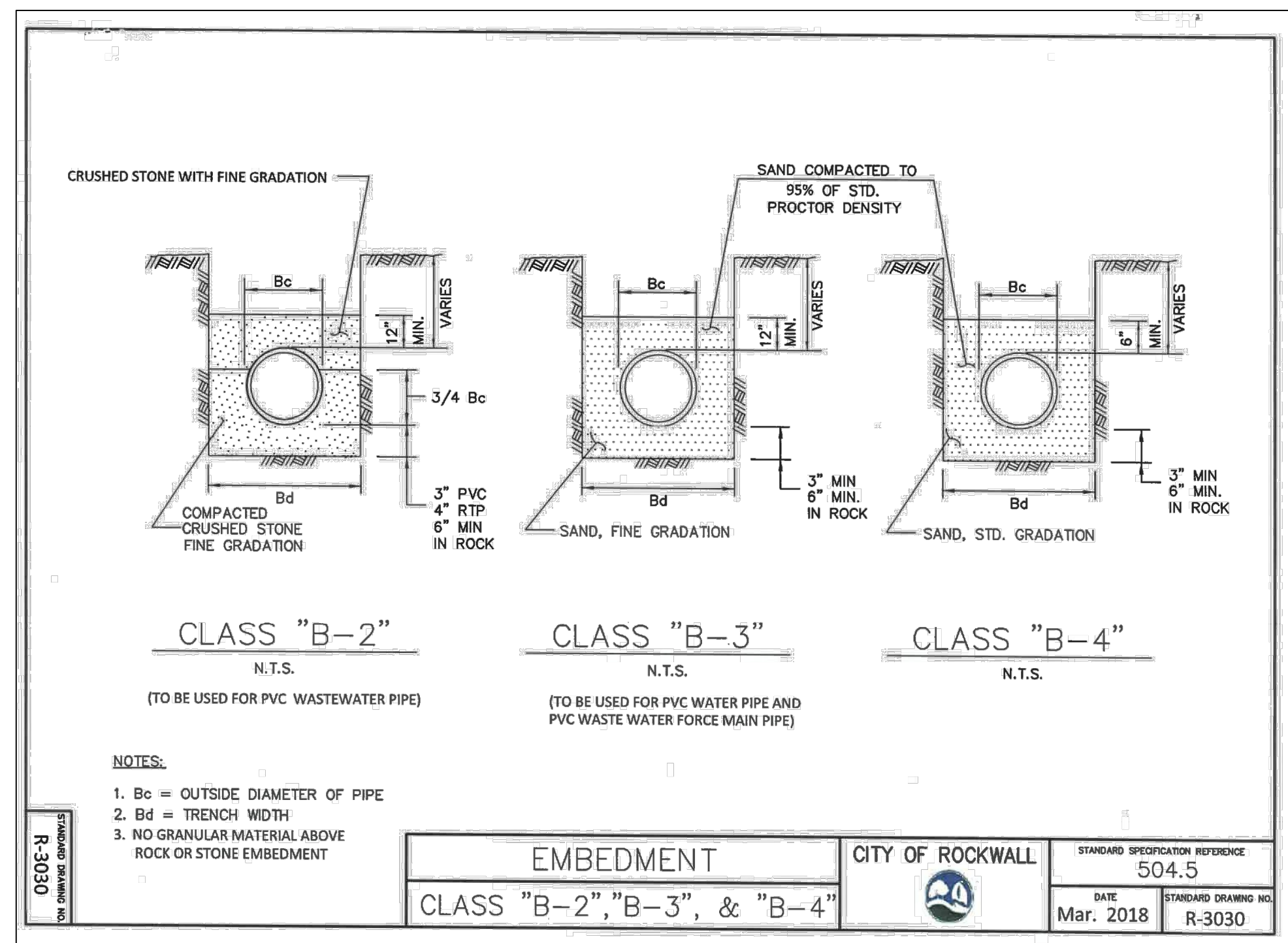
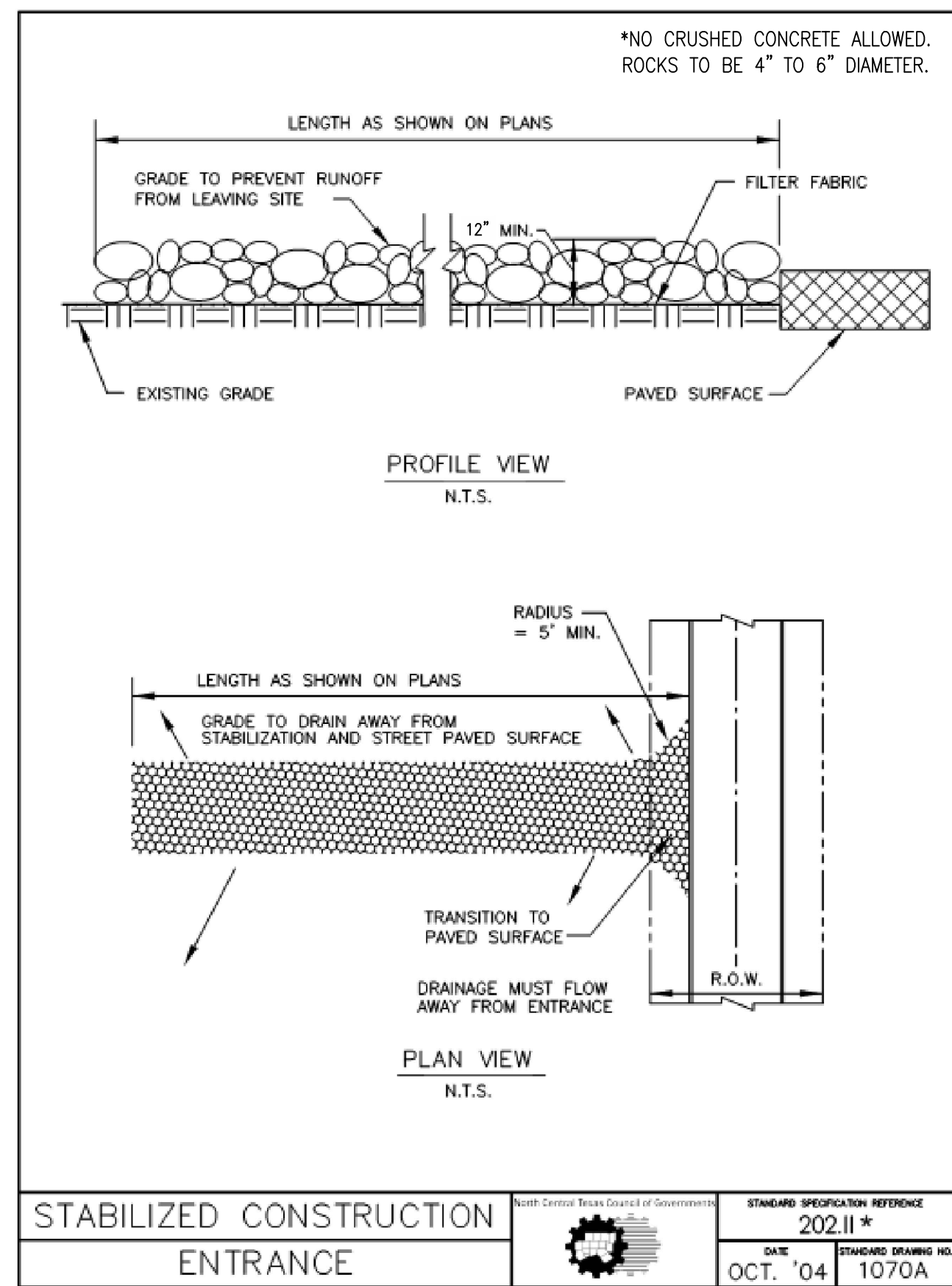
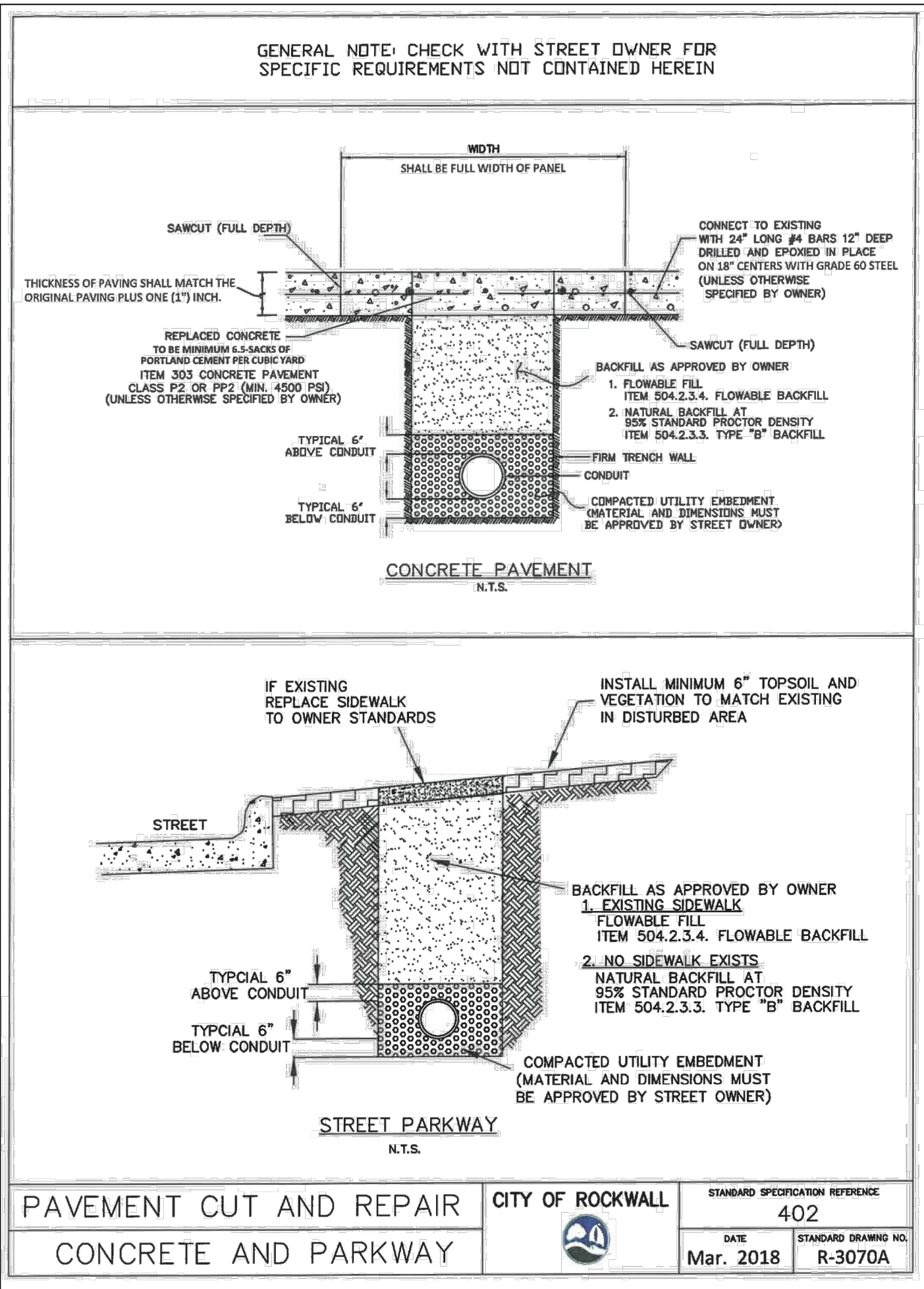
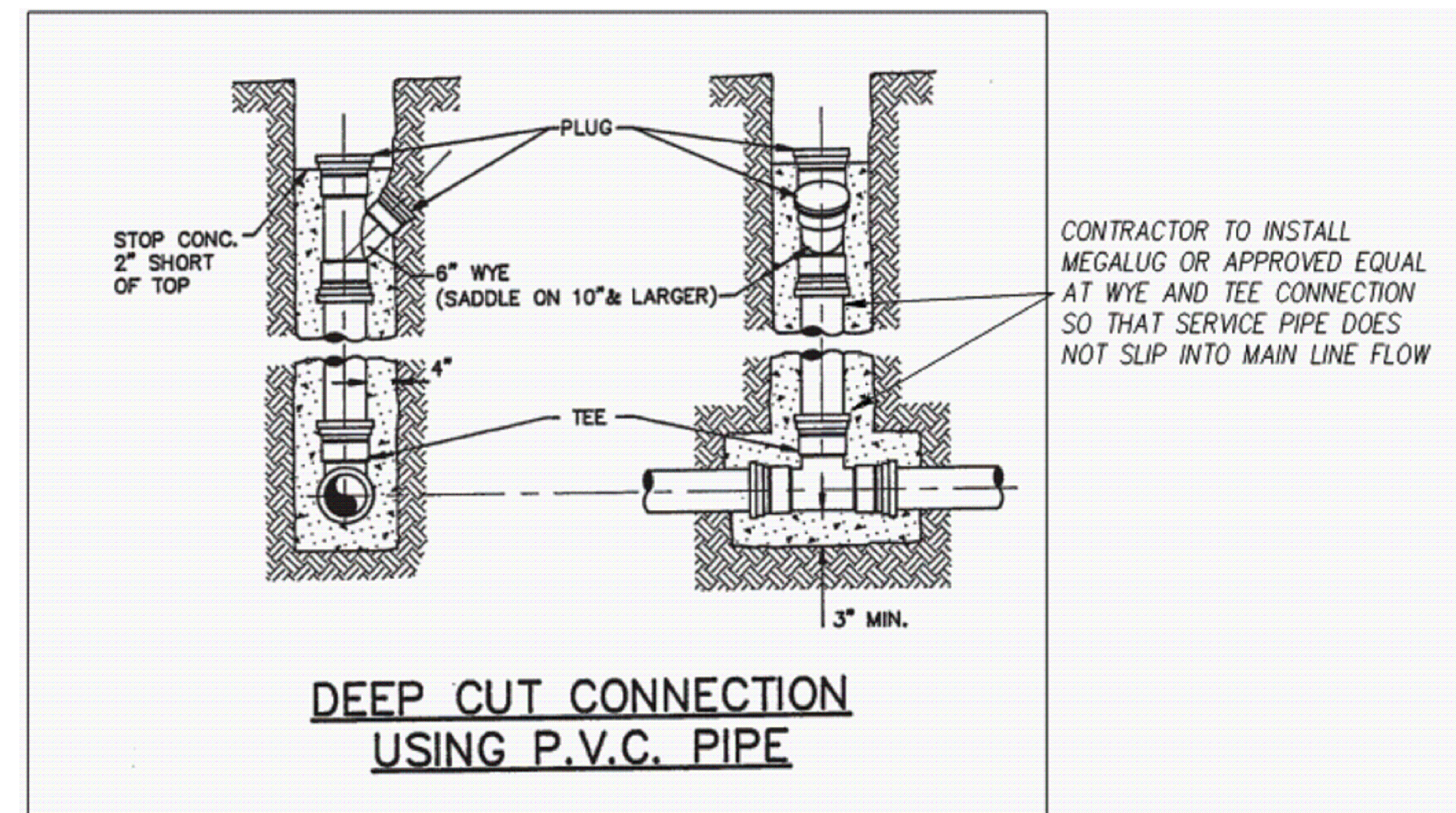
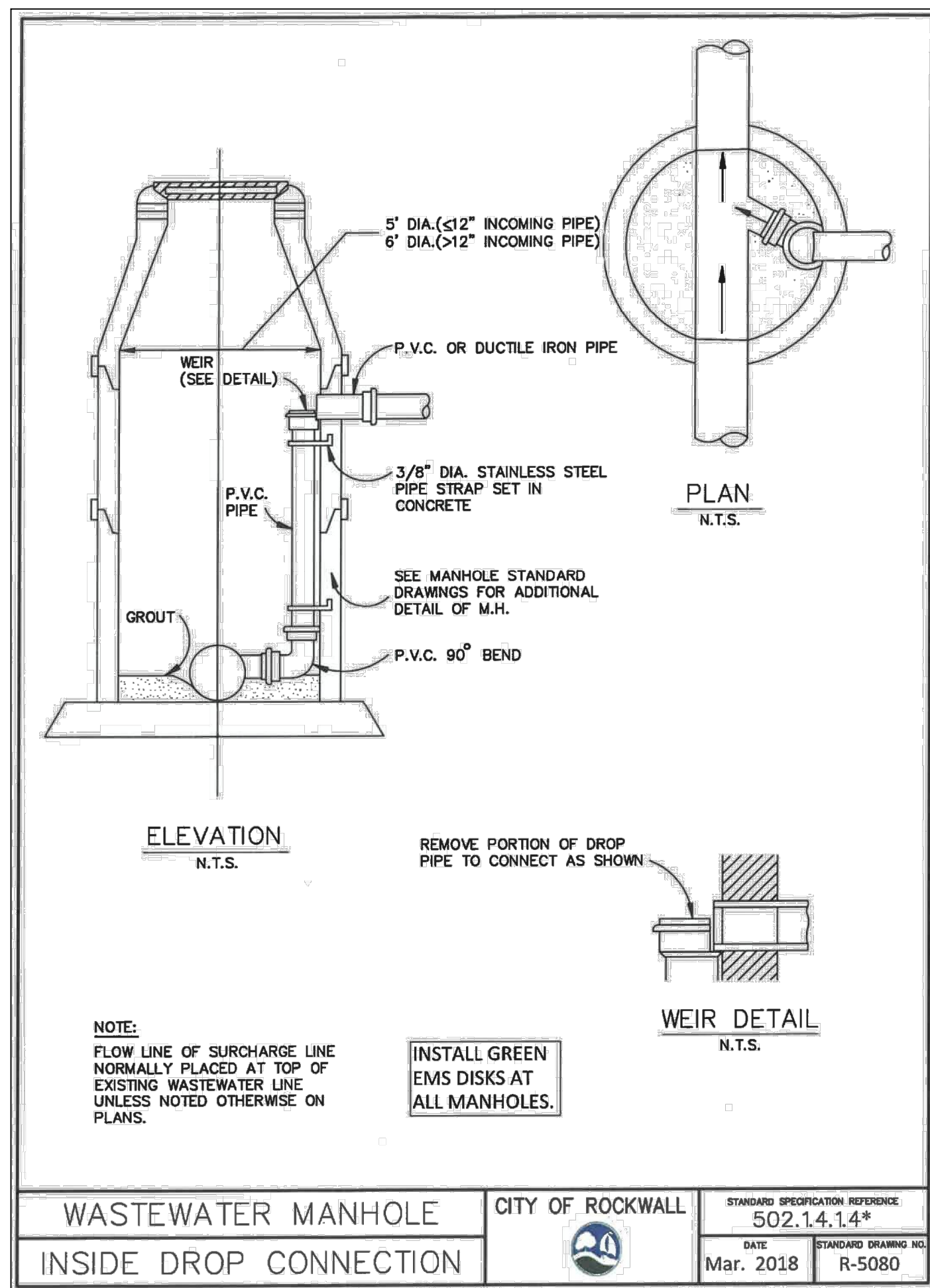
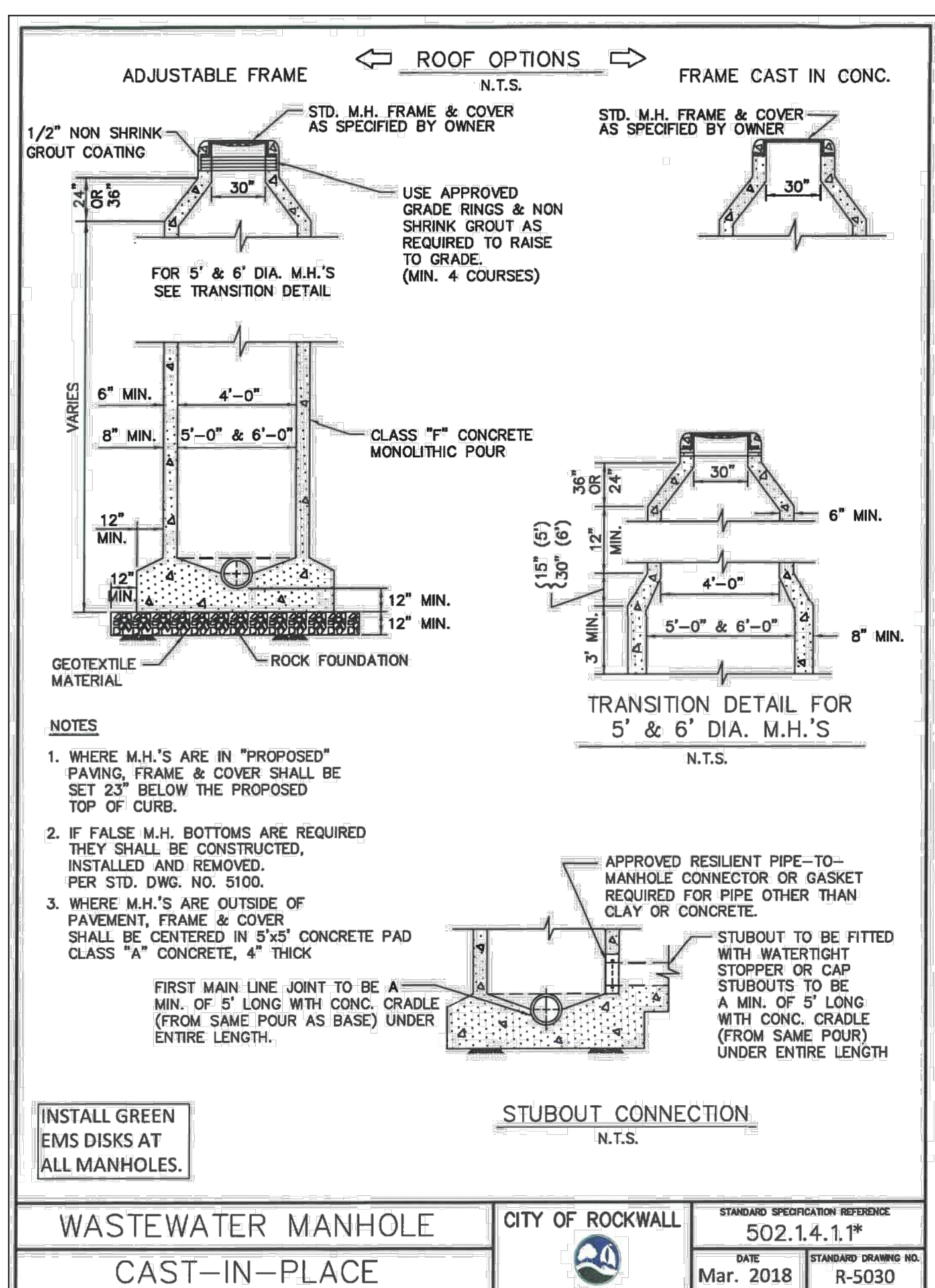
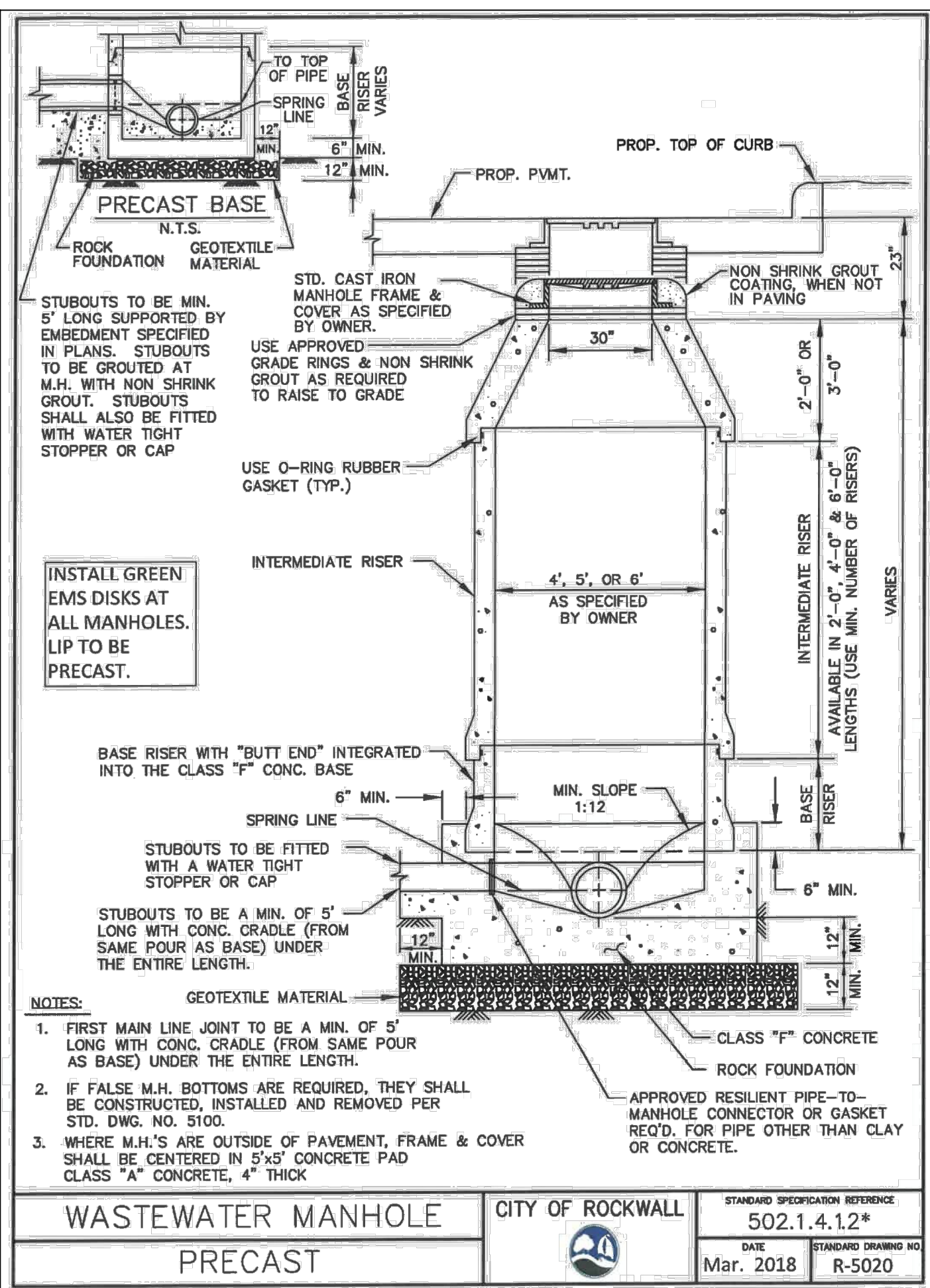


PLOTED: 5/24/2019 10:46 AM



P:\PR57307\Cadd\Modis\Civil\B-D\LSN.dwg -SAVED:5/24/2019 Mulvey, Kyle

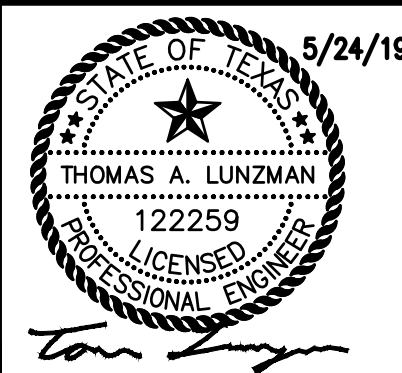
NO.	REVISIONS	DATE	BY	CHK.

BENCHMARK
CITY OF ROCKWALL
SITE: BM_101 CROSS CUT ON TOP OF CURB AT THE NORTHEAST END OF THE SOUTH HEAD-IN PARKING FOR THE APPRAISAL DISTRICT BUILDING, 90' SOUTHWESTERLY FROM THE CENTER OF TOWNSHIP BLVD. & 340' SOUTHEASTERLY FROM THE CENTER OF JUSTIN DRIVE.
N: 7023100.57 E: 2596609.42 ELEV. = 583.32'
SITE: BM_102 CROSS CUT IN SIDEWALK, 41' SOUTHWESTERLY FROM THE CENTER OF TOWNSHIP BLVD. & 895' SOUTHEASTERLY FROM THE CENTER OF JUSTIN DRIVE.
N: 7022744.44 E: 2597331.250 ELEV. = 585.72'

Burgess & Niple, Inc Stafford, TX

BURGESS & NIPL

10701 CORPORATE DR., SUITE 118,
STAFFORD, TX 77477
PHONE: (281)980-7705
TBPE FIRM REGISTRATION NO. F-10834



**SQUABBLE CREEK SS REHABILITATION
CITY OF ROCKWALL, TEXAS**

SANITARY SEWER DETAILS

JOB NUMBER:	57307
DESIGNED BY:	KTM/TAL
DRAWN BY:	KTM
APPROVED BY:	TAL
CHECKED BY:	JTR
DATE:	5/24/2019
SCALE:	NONE SH1 SIZE: 24x36
SHEET NUMBER:	OF
C.08	8