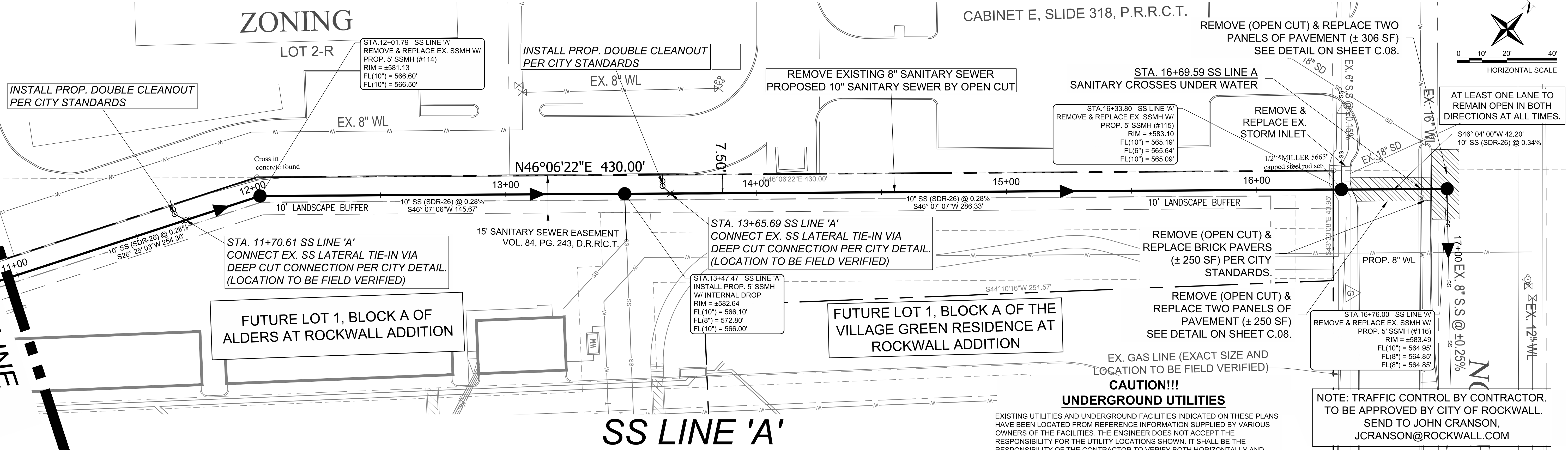
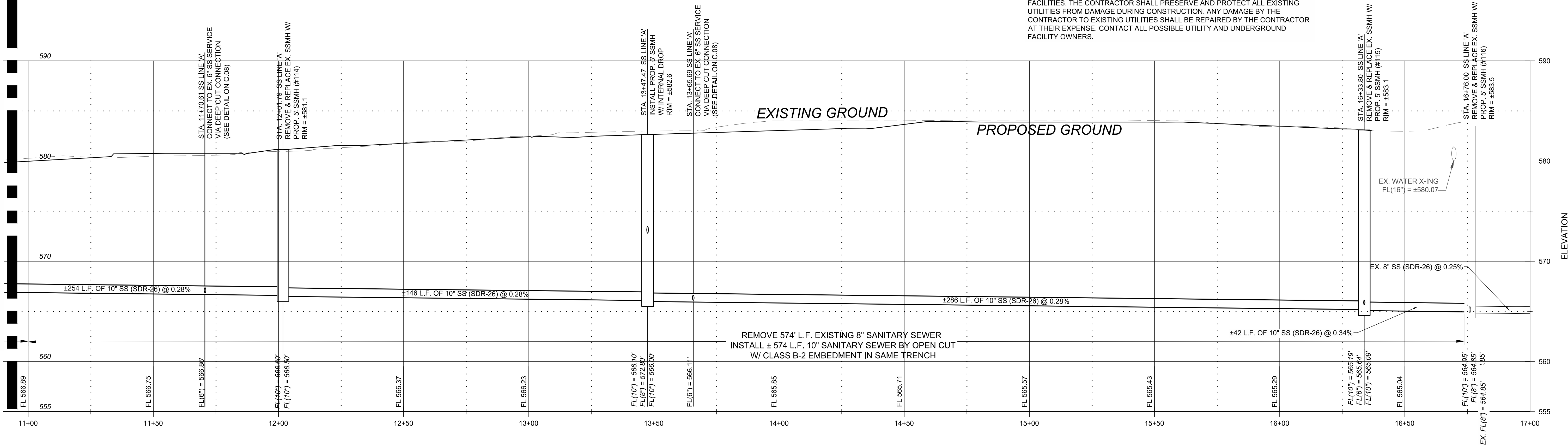


SEE SHEET C.05
MATCH LINE

SEE SHEET C.05
MATCH LINE



SS LINE 'A'
STA. 11+00.00 TO STA. 16+79.81



- GENERAL NOTES:**
- TRAFFIC CONTROL PLAN SHALL BE DONE BY CONTRACTOR.
 - TRAFFIC CONTROL PLAN WILL BE SUBJECT TO CITY OF ROCKWALL APPROVAL BEFORE STARTING ANY WORK WITHIN R.O.W.
 - BY-PASS PUMPING PLANS TO BE PROVIDED BY CONTRACTOR AND APPROVED BY CITY OF ROCKWALL ENGINEERING DIVISION.
 - MANHOLES SHALL BE POLYMER MANHOLES (ARMOROCK OR APPROVED EQUAL) PER CITY SPECIFICATION.
- NOTE: ALL RESPONSIBILITY FOR ADEQUACY OF DESIGN REMAINS WITH THE DESIGN ENGINEER. THE CITY OF ROCKWALL, IN REVIEWING AND RELEASING PLANS FOR CONSTRUCTION, ASSUMES NO RESPONSIBILITY FOR ADEQUACY OR ACCURACY OF DESIGN.**

NO.	REVISIONS	DATE	BY	CHK.	BENCHMARK

Burgess & Niple, Inc
Stafford, TX

BURGESS & NIPL
 10701 CORPORATE DR., SUITE 118,
 STAFFORD, TX 77477
 PHONE: (281)980-7705
 TBPE FIRM REGISTRATION NO. F-10834

5/24/19

STATE OF TEXAS
 THOMAS A. LUNZMAN
 122259
 LICENSED PROFESSIONAL ENGINEER

SQUABBLE CREEK SS REHABILITATION
CITY OF ROCKWALL, TEXAS

SS LINE 'A' PLAN & PROFILE
(SHEET 3 OF 3)

JOB NUMBER:	57307
DESIGNED BY:	KTM/TAL
DRAWN BY:	KTM
APPROVED BY:	TAL
CHECKED BY:	JTR
DATE:	5/24/2019
SCALE:	H: 1" = 20' V: 1" = 2'
SHEET NUMBER:	OF
C.06	8