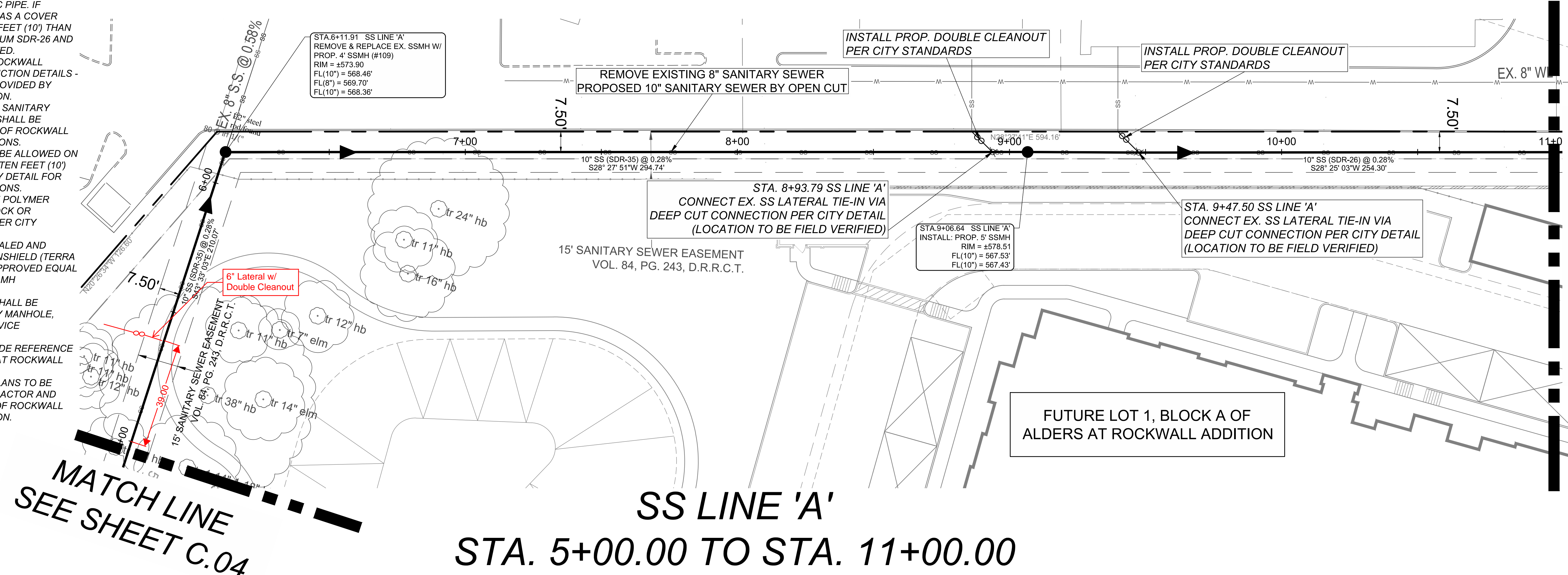
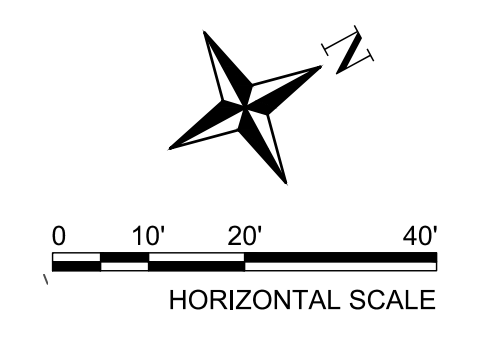


5/24/2019 10:46 AM

NOTES:

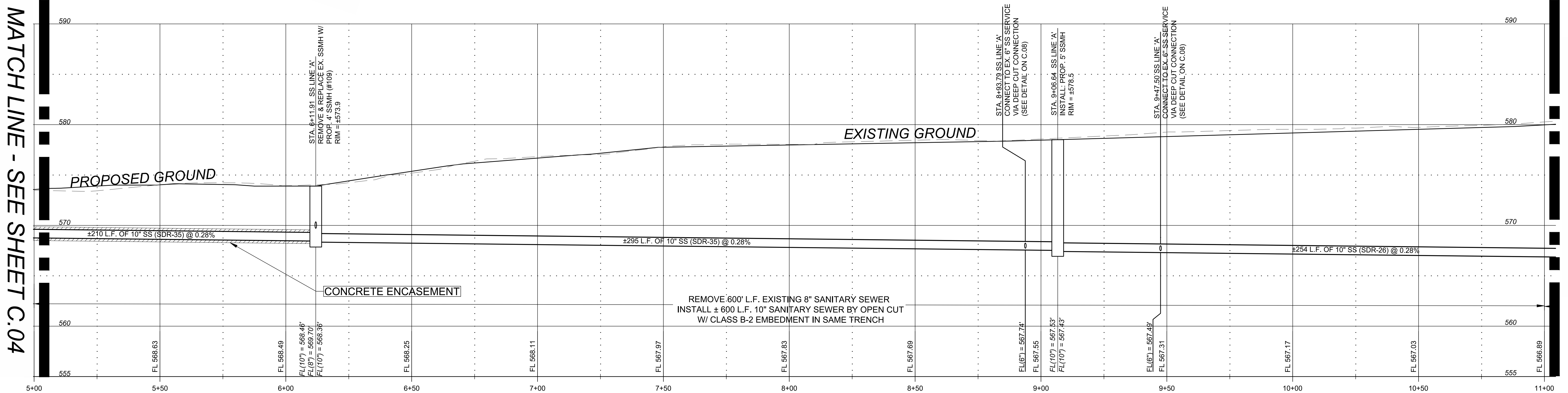
- PER CITY OF ROCKWALL STANDARDS, ALL 10" SANITARY SEWER MAINS SHALL HAVE 48" OF COVER.
- ALL 10" SANITARY SEWER MAINS SHALL BE SDR-35 PVC PIPE. IF WASTEWATER LINE HAS A COVER GREATER THAN TEN FEET (10') THAN PIPE SHALL BE MINIMUM SDR-26 AND NO SERVICES ALLOWED.
- REFER TO CITY OF ROCKWALL STANDARD CONSTRUCTION DETAILS - SANITARY SEWER PROVIDED BY ENGINEERING DIVISION.
- ALL WATER LINE AND SANITARY SEWER CROSSINGS SHALL BE INSTALLED PER CITY OF ROCKWALL AND TCEQ REGULATIONS.
- NO SERVICES SHALL BE ALLOWED ON WASTEWATER LINES TEN FEET (10') OR DEEPER. SEE CITY DETAIL FOR DEEP CUT CONNECTIONS.
- MANHOLES SHALL BE POLYMER MANHOLES (ARMOROCK OR APPROVED EQUAL) PER CITY SPECIFICATION.
- MANHOLES TO BE SEALED AND RAVEN LINED OR CONSHIELD (TERRA COTTA COLOR) OR APPROVED EQUAL INCLUDING EXISTING MH CONNECTIONS.
- A GREEN EMS DISK SHALL BE INSTALLED ON EVERY MANHOLE, CLEANOUT, AND SERVICE CONNECTION.
- FOR PROPOSED GRADE REFERENCE APPROVED ALDERS AT ROCKWALL PLANS.
- BY-PASS PUMPING PLANS TO BE PROVIDED BY CONTRACTOR AND APPROVED BY CITY OF ROCKWALL ENGINEERING DIVISION.



MATCH LINE
SEE SHEET C.04

MATCH LINE
SEE SHEET C.06

SS LINE 'A'
STA. 5+00.00 TO STA. 11+00.00



MATCH LINE - SEE SHEET C.04

MATCH LINE
SEE SHEET C.06

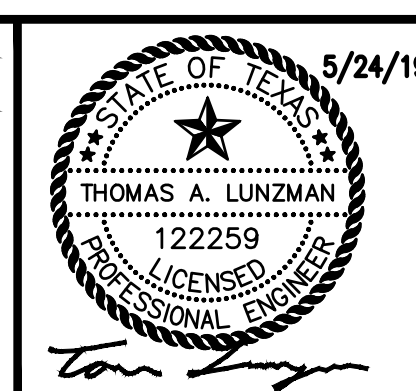
NOTE: ALL RESPONSIBILITY FOR ADEQUACY OF DESIGN REMAINS WITH THE DESIGN ENGINEER. THE CITY OF ROCKWALL, IN REVIEWING AND RELEASING PLANS FOR CONSTRUCTION, ASSUMES NO RESPONSIBILITY FOR ADEQUACY OR ACCURACY OF DESIGN.

NO.	REVISIONS	DATE	BY	CHK.	BENCHMARK
					CIT. 58
					SITE_BM_ONE: CROSS CUT ON TOP OF CURB AT THE NORTHEAST END OF THE SOUTH HEAD-IN PARKING FOR THE APPRAISAL DISTRICT BUILDING, 92' SOUTHWESTERLY FROM THE CENTER OF TOWNSHEND BLVD. & 340' SOUTHEASTERLY FROM THE CENTER OF JUSTIN DRIVE.
					N: 7023100.57 E: 2596609.42 ELEV. = 583.32'
					SITE_BM_TWO: CROSS CUT IN SIDEWALK, 41' SOUTHWESTERLY FROM THE CENTER OF TOWNSHEND BLVD. & 892' SOUTHEASTERLY FROM THE CENTER OF JUSTIN DRIVE.
					N: 7022744.44 E: 2597331.250 ELEV. = 585.72'

Burgess & Niple, Inc Stafford, TX

BURGESS & NIPL

10701 CORPORATE DR., SUITE 118,
STAFFORD, TX 77477
PHONE: (281)980-7705
TBPE FIRM REGISTRATION NO. F-10834



SQUABBLE CREEK SS REHABILITATION
CITY OF ROCKWALL, TEXAS

SS LINE 'A' PLAN & PROFILE
(SHEET 2 OF 3)

JOB NUMBER:	57307
DESIGNED BY:	KTM/TAL
DRAWN BY:	KTM
APPROVED BY:	TAL
CHECKED BY:	JTR
DATE:	5/24/2019
SCALE:	H: 1" = 20', V: 1" = 2'
SHEET NUMBER:	OF
C.05	8