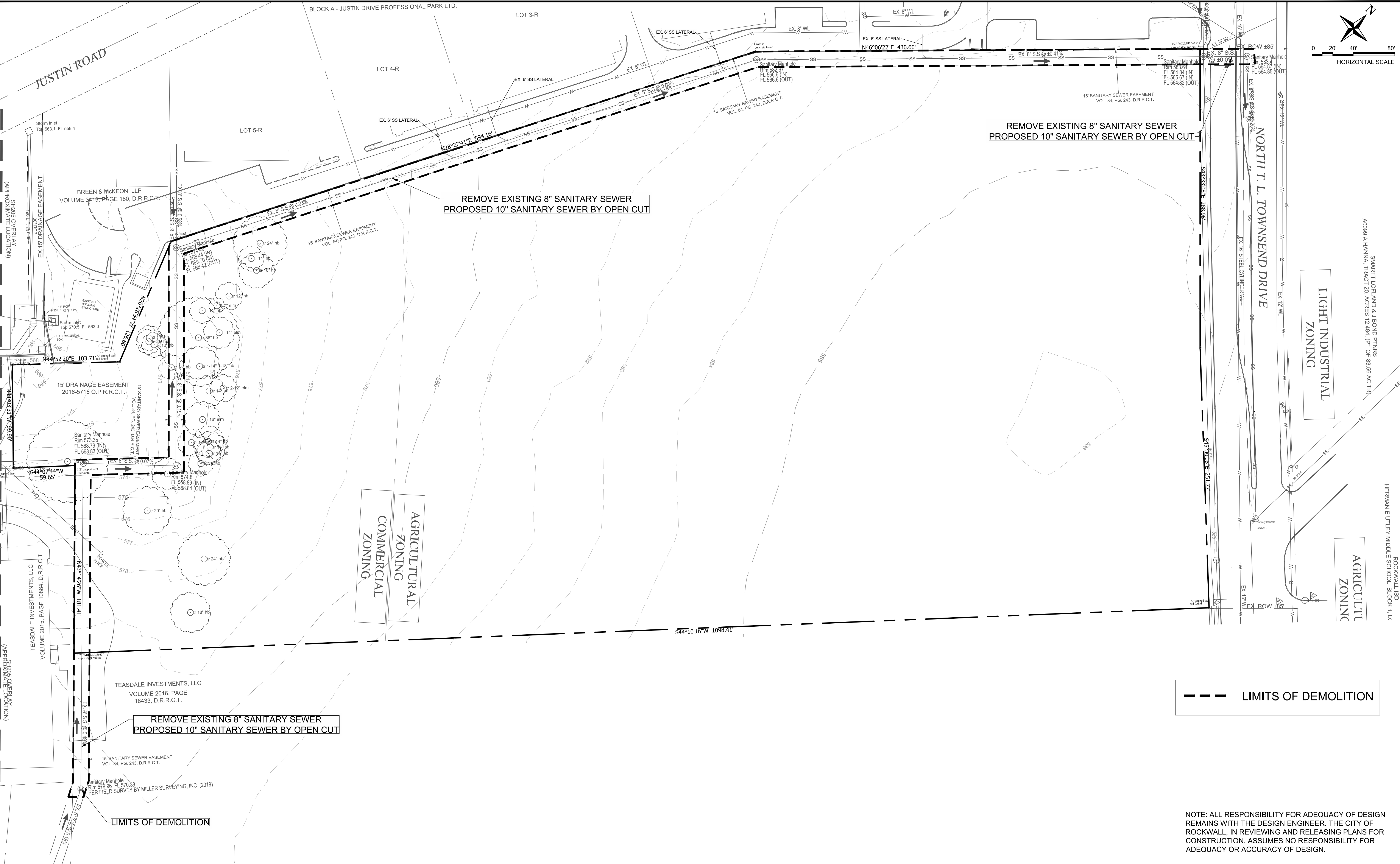
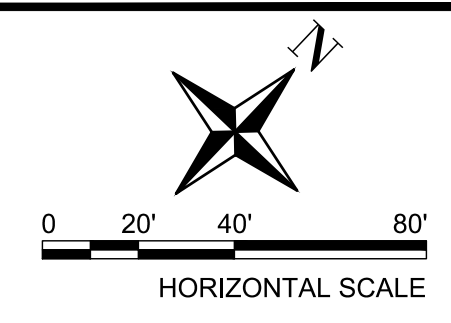


P:\PR57307\Cadd\Modis\Civil\C-SSWR01.dwg SAVED:5/24/2019 10:45 AM



--- LIMITS OF DEMOLITION

NOTE: ALL RESPONSIBILITY FOR ADEQUACY OF DESIGN REMAINS WITH THE DESIGN ENGINEER. THE CITY OF ROCKWALL, IN REVIEWING AND RELEASING PLANS FOR CONSTRUCTION, ASSUMES NO RESPONSIBILITY FOR ADEQUACY OR ACCURACY OF DESIGN.

NO.	REVISIONS	DATE	BY	CHK.	BENCHMARK

**Burgess & Niple, Inc**      Stafford, TX

**BURGESS & NIPL**

10701 CORPORATE DR., SUITE 118,  
STAFFORD, TX 77477  
PHONE: (281)980-7705  
TBPE FIRM REGISTRATION NO. F-10834

5/24/19

THOMAS A. LUNZMANN  
122259  
LICENSED PROFESSIONAL ENGINEER

**SQUABBLE CREEK SS REHABILITATION**  
CITY OF ROCKWALL, TEXAS

EXISTING CONDITIONS & DEMOLITION	
JOB NUMBER: 57307	DESIGNED BY: KTM/TAL
DRAWN BY: KTM	APPROVED BY: TAL
CHECKED BY: JTR	DATE: 5/24/2019
SCALE: 1"=40'	SHT SIZE: 24x36
SHEET NUMBER: C.03	OF 8