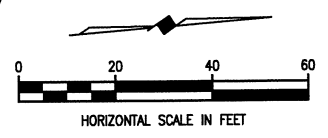
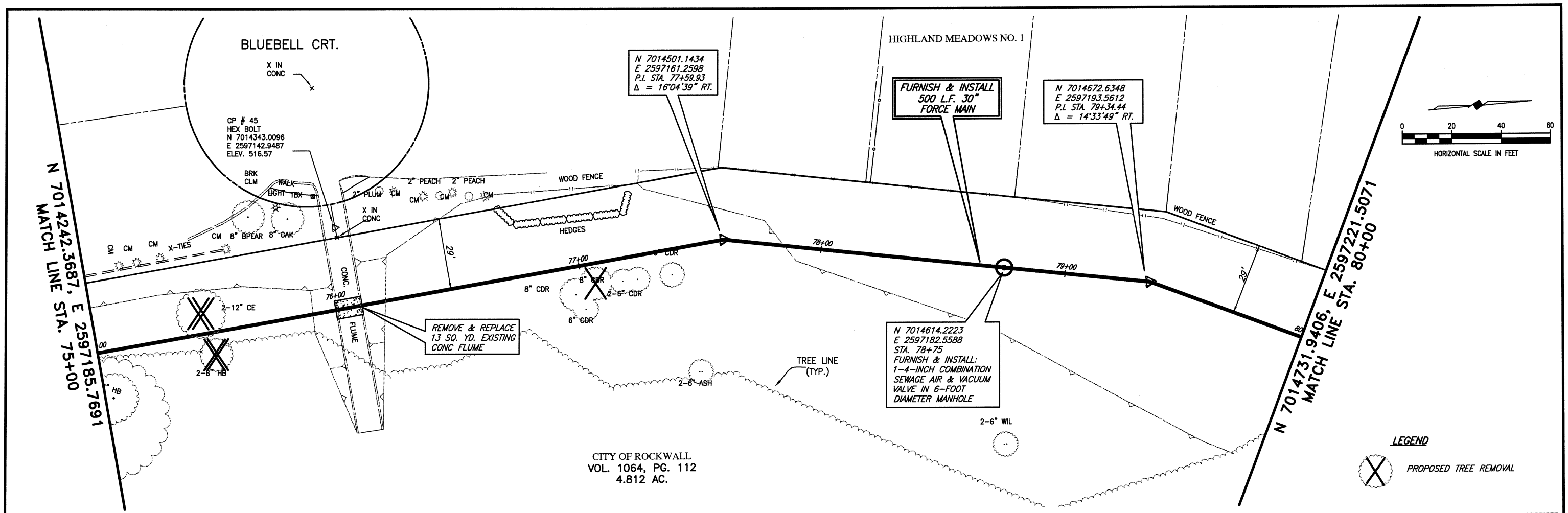
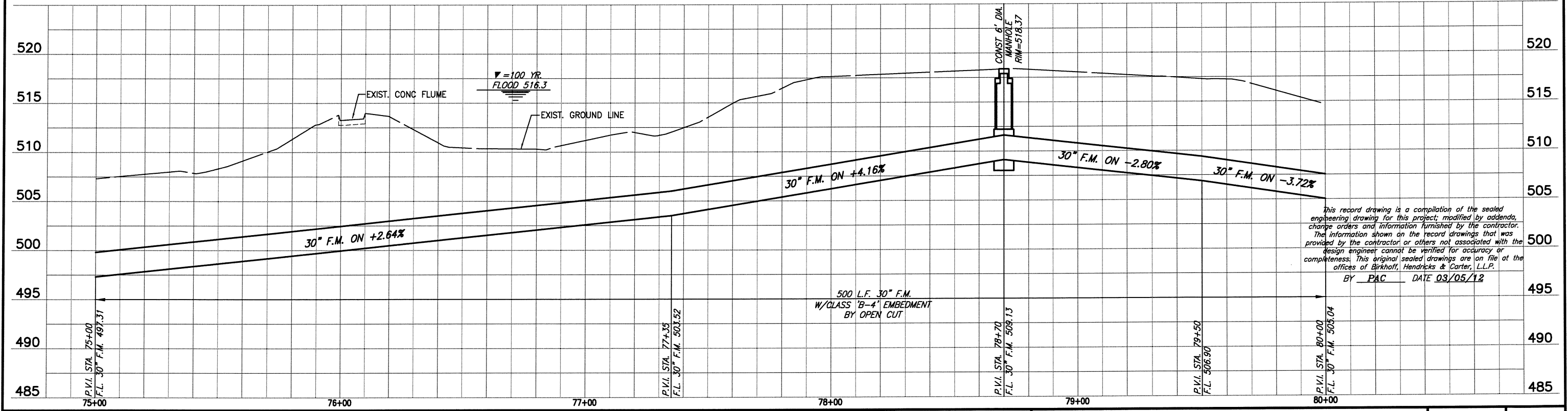


These plans and related specifications were prepared for construction of this specific project only. Reuse of these documents is not permitted without written authorization of Birkhoff, Hendricks, & Carter, L.L.P.



**LEGEND**  
 PROPOSED TREE REMOVAL

CITY OF ROCKWALL  
 VOL. 1064, PG. 112  
 4.812 AC.



This record drawing is a compilation of the sealed engineering drawing for this project, modified by addenda, change orders and information furnished by the contractor. The information shown on the record drawings that was provided by the contractor or others not associated with the design engineer cannot be verified for accuracy or completeness. This original sealed drawings are on file at the offices of Birkhoff, Hendricks & Carter, L.L.P.  
 BY PAC DATE 03/05/12


**BIRKHOFF, HENDRICKS & CARTER, L.L.P.**  
 PROFESSIONAL ENGINEERS  
 Texas Firm F526  
 11910 Greenville Ave., Suite 600  
 Dallas, Texas (214) 361-7900

PAULA A. CARLISLE  
 85400  
 LICENSED PROFESSIONAL ENGINEER

**CITY OF ROCKWALL, TEXAS**  
 SQUABBLE CREEK FORCE MAIN  
**PLAN AND PROFILE**  
 STA. 75+00 TO STA. 80+00

BHC PROJECT NO. 2007-110	SHEET NO. <b>4</b>
November, 2010	