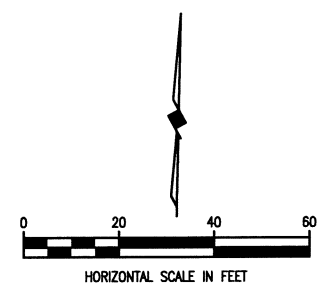
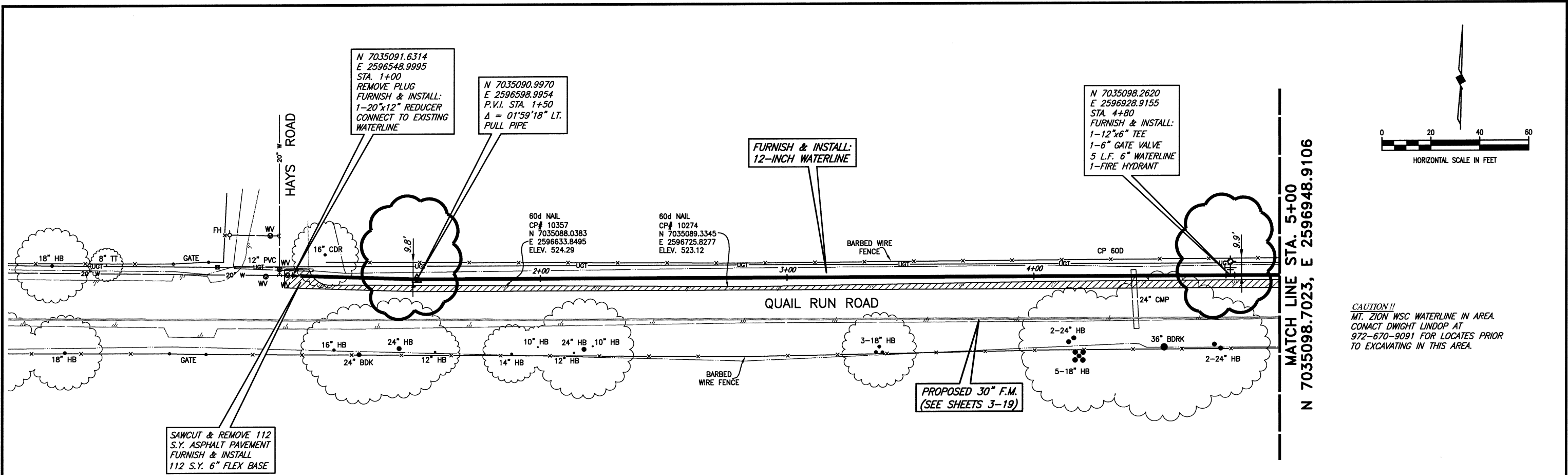
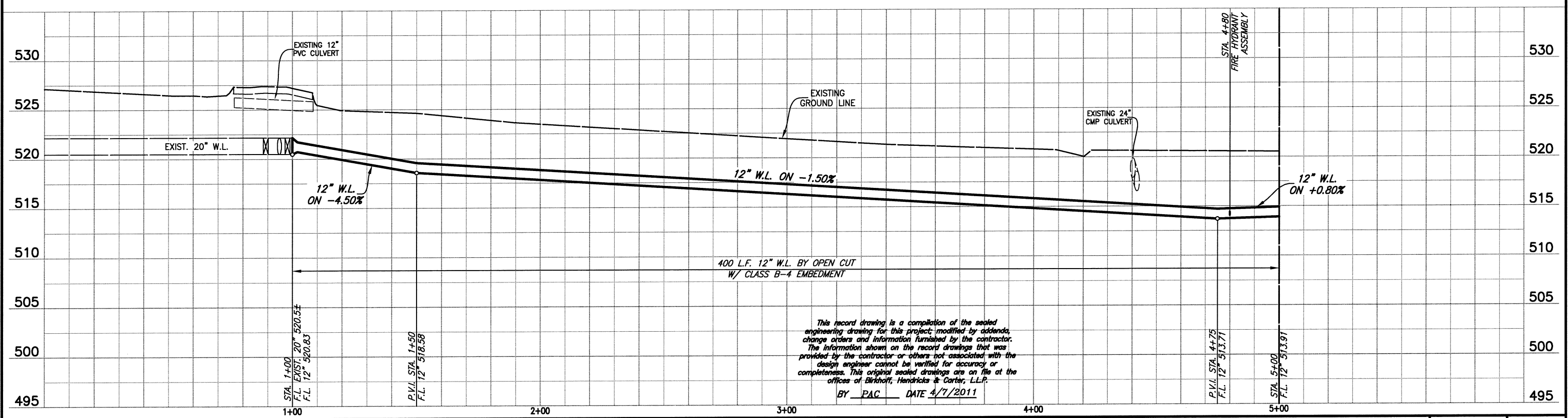


These plans and related specifications were prepared for construction of this specific project only. Reuse of these documents is not permitted without written authorization of Birkhoff, Hendricks & Conway, L.L.P.



**CAUTION!!**  
 MT. ZION WSC WATERLINE IN AREA.  
 CONTACT DWIGHT LINDOP AT  
 972-670-9091 FOR LOCATES PRIOR  
 TO EXCAVATING IN THIS AREA.



This record drawing is a compilation of the sealed engineering drawing for this project, modified by addenda, change orders and information furnished by the contractor. The information shown on the record drawings that was provided by the contractor or others not associated with the design engineer cannot be verified for accuracy or completeness. This original sealed drawings are on file at the offices of Birkhoff, Hendricks & Carter, L.L.P.  
 BY PAC DATE 4/7/2011


**BIRKHOFF, HENDRICKS & CONWAY, L.L.P.**  
 PROFESSIONAL ENGINEERS  
 Texas Firm F526  
 11910 Greenville Ave., Suite 600  
 Dallas, Texas 75243 (214) 361-7900

**CITY OF ROCKWALL, TEXAS**  
 QUAIL RUN WATER LINE  
 PLAN-PROFILE STA. 1+00 TO STA. 5+00

BHC PROJECT NO. 2007-129	SHEET NO. 20
April 2011	