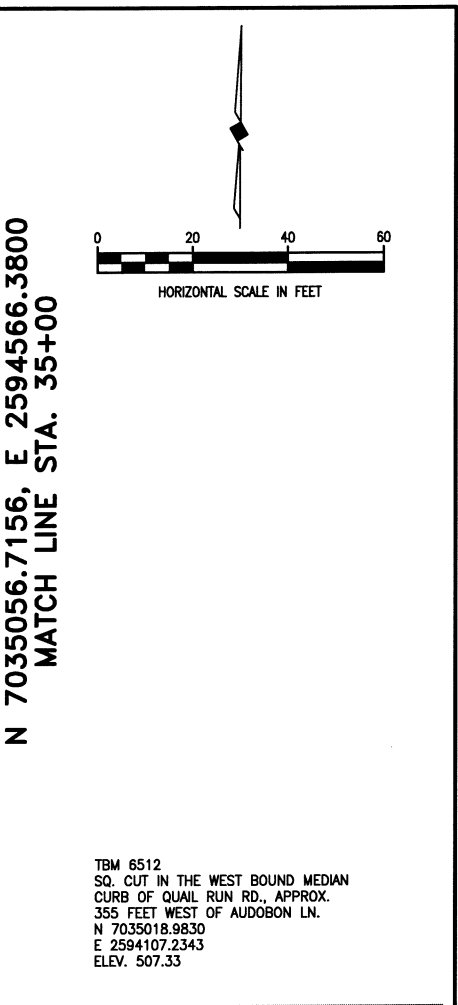
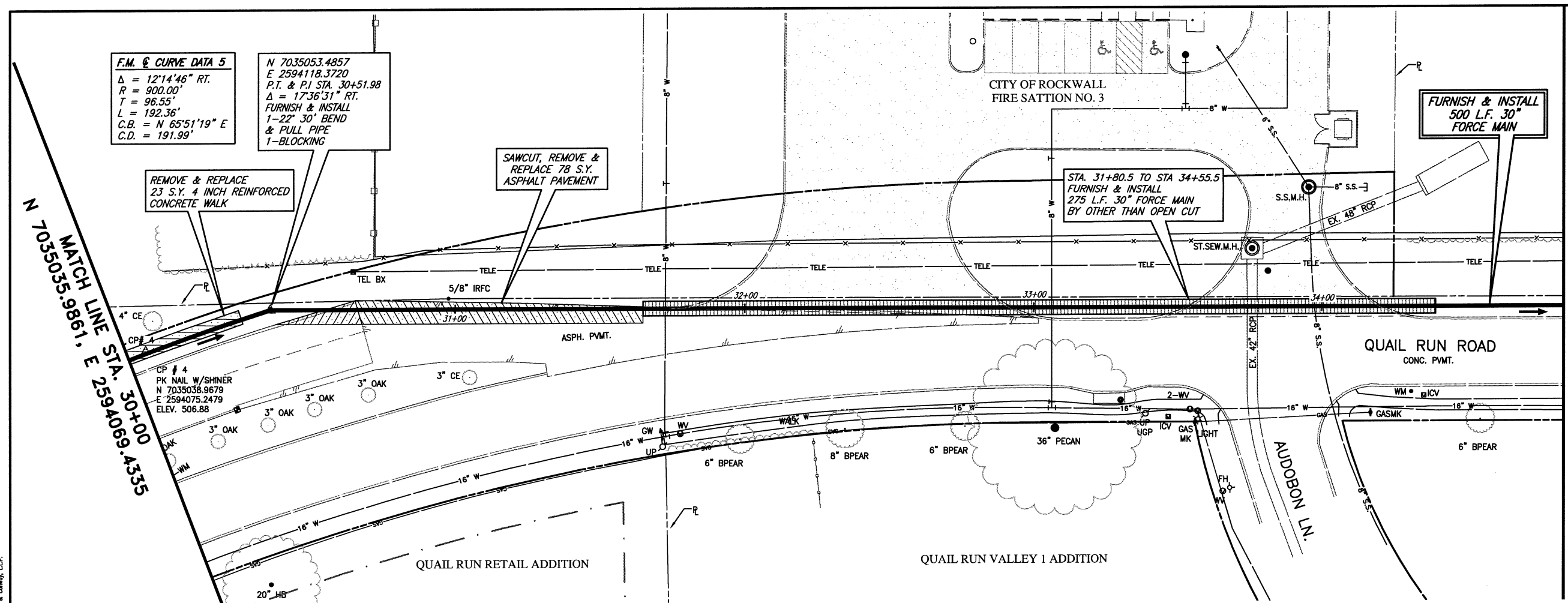
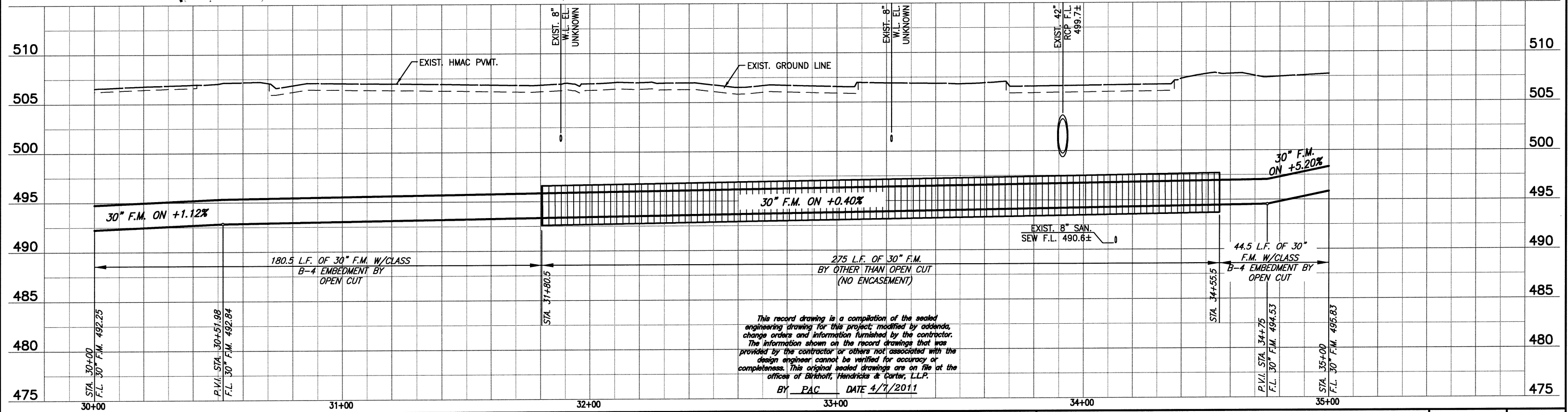


These plans and related specifications were prepared for construction of this specific project only. Reuse of these documents is not permitted without written authorization of Birkhoff, Hendricks, & Conway, L.L.P.



N 7035056.7156, E 2594566.3800  
MATCH LINE STA. 35+00

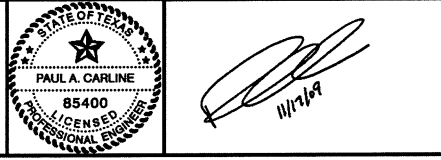
TBM 6512  
SQ. CUT IN THE WEST BOUND MEDIAN  
CURB OF QUAIL RUN RD., APPROX.  
355 FEET WEST OF AUDUBON LN.  
N 7035018.9830  
E 2594107.2343  
ELEV. 507.33



This record drawing is a compilation of the sealed engineering drawing for this project, modified by addenda, change orders and information furnished by the contractor. The information shown on the record drawings that was provided by the contractor or others not associated with the design engineer cannot be verified for accuracy or completeness. This original sealed drawings are on file at the offices of Birkhoff, Hendricks & Carter, L.L.P.  
BY PAC DATE 4/7/2011

FIELD CHANGE NO. 1 - NOVEMBER 17, 2009

**BIRKHOFF, HENDRICKS & CONWAY, L.L.P.**  
PROFESSIONAL ENGINEERS  
Texas Firm F526  
11910 Greenville Ave., Suite 600  
Dallas, Texas 75243 (214) 361-7900



**CITY ROCKWALL, TEXAS**  
SQUABBLE CREEK  
30 INCH FORCE MAIN  
PLAN AND PROFILE  
STA. 30+00 TO STA. 35+00

BHC PROJECT NO. 2007-110	SHEET NO. <b>9</b>
July 2009	