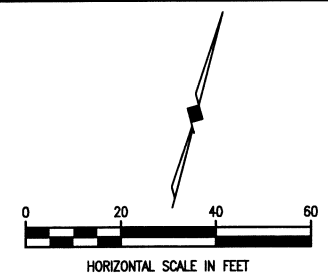
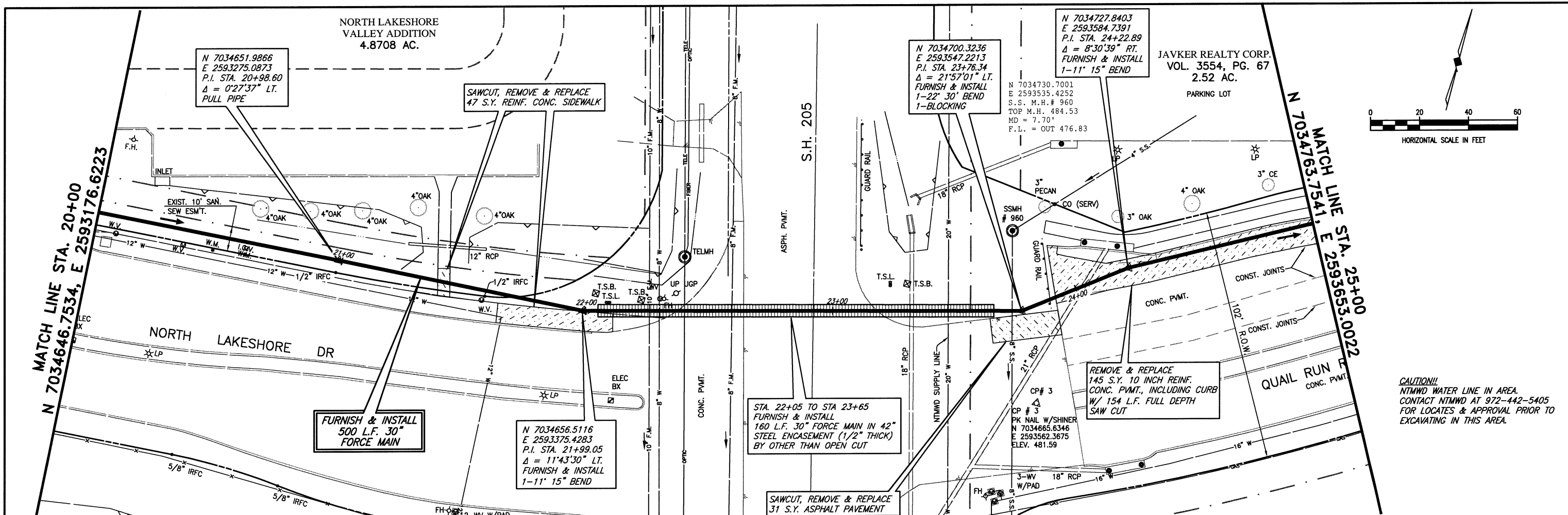
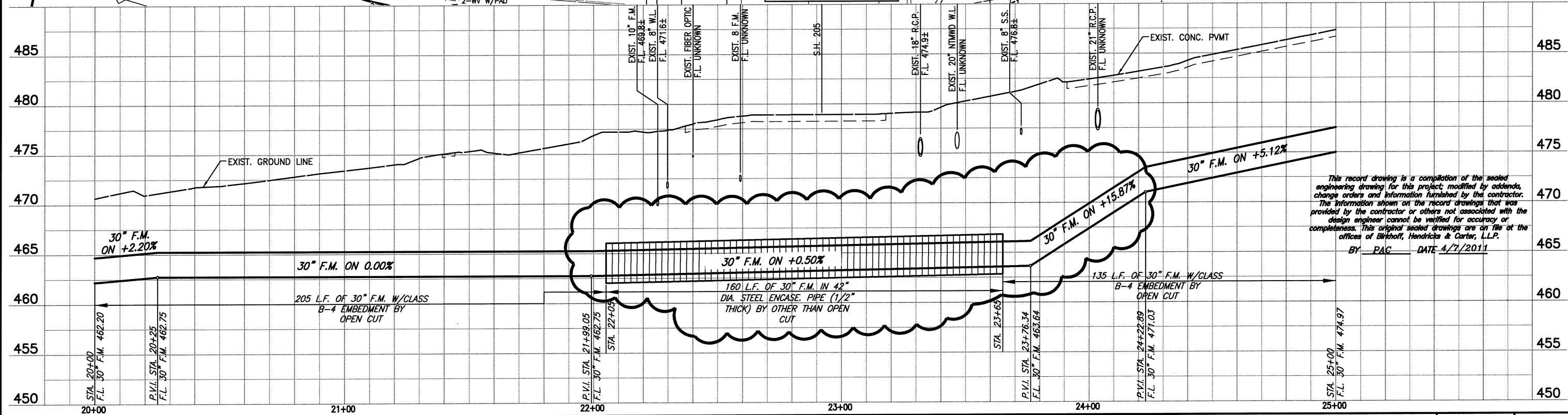


These plans and related specifications were prepared for construction of this specific project only. Reuse of these documents is not permitted without written authorization of Birkhoff, Hendricks & Conway, L.L.P.



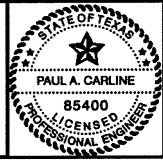
CAUTION!!!
 NTMWD WATER LINE IN AREA.
 CONTACT NTMWD AT 972-442-5405
 FOR LOCATES & APPROVAL PRIOR TO
 EXCAVATING IN THIS AREA.



This record drawing is a compilation of the sealed engineering drawing for this project; modified by addenda, change orders and information furnished by the contractor. The information shown on the record drawings that was provided by the contractor or others not associated with the design engineer cannot be verified for accuracy or completeness. This original sealed drawings are on file at the offices of Birkhoff, Hendricks & Conway, L.L.P.
 BY PAC DATE 4/7/2011

FIELD CHANGE NO. 1 - NOVEMBER 17, 2009

BIRKHOFF, HENDRICKS & CONWAY, L.L.P.
 CONSULTING ENGINEERS
 Texas Firm F526
 11910 Greenville Ave., Suite 600
 Dallas, Texas 75243 (214) 361-7900



[Signature]
 11/17/09

CITY ROCKWALL, TEXAS
 SQUABBLE CREEK
 30 INCH FORCE MAIN
 PLAN AND PROFILE
 STA. 20+00 TO STA. 25+00

BHC PROJECT NO. 2007-110	SHEET NO. 7
July 2009	