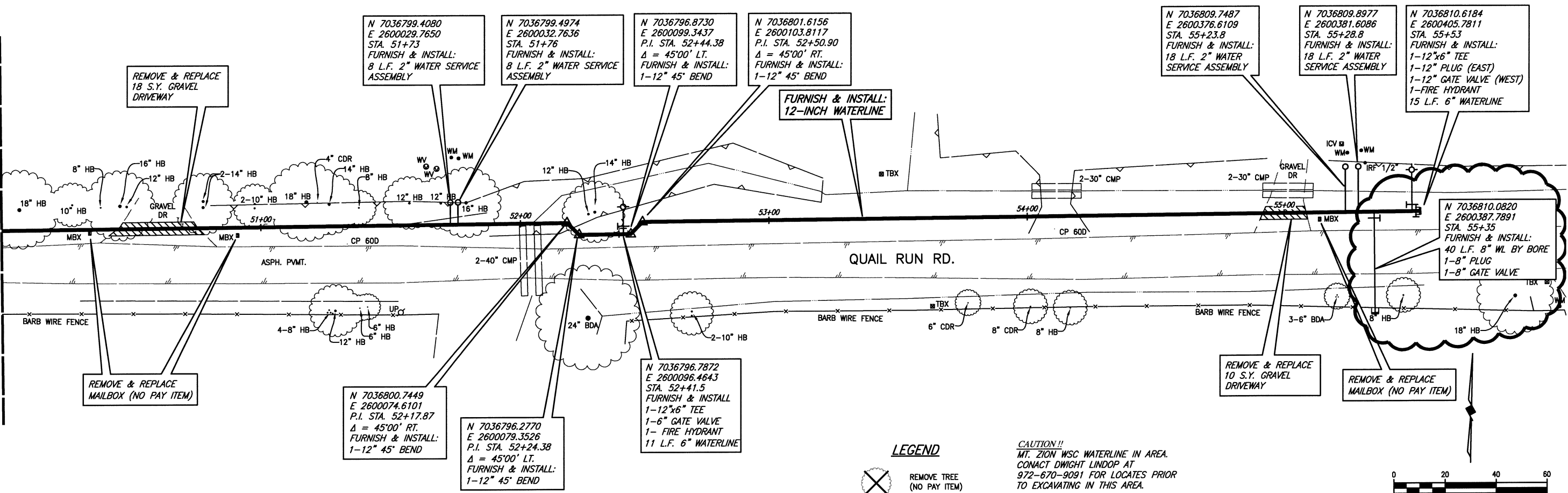


These plans and related specifications were prepared for construction of this specific project only. Reuse of these documents is not permitted without written authorization of Birkhoff, Hendricks, & Conway, L.L.P.

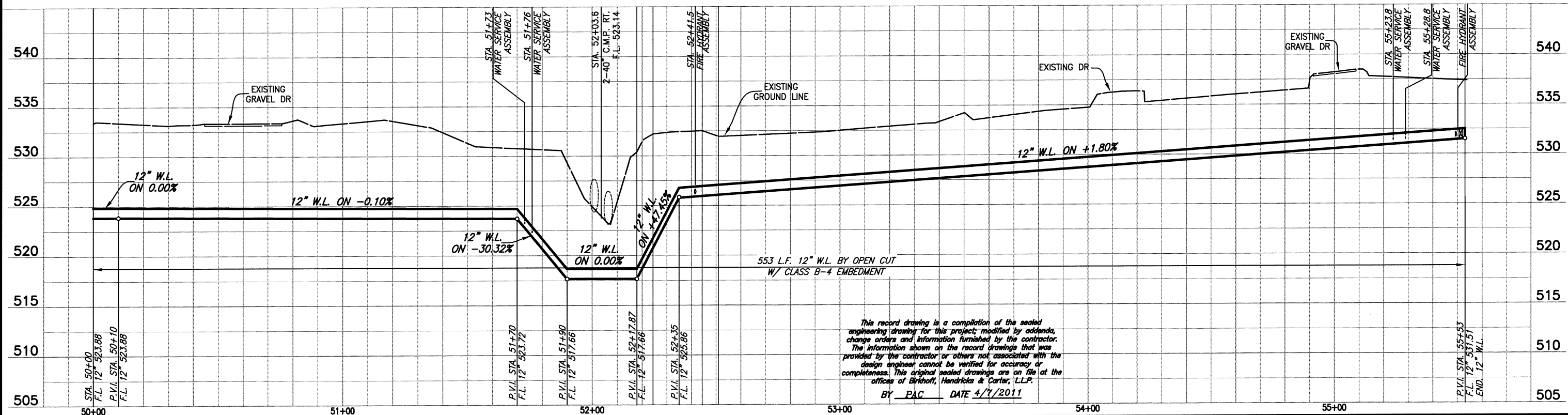
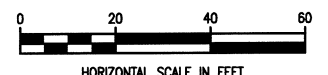
N 7036794.2525, E 2599856.8418
MATCH LINE STA. 50+00



LEGEND

REMOVE TREE (NO PAY ITEM)

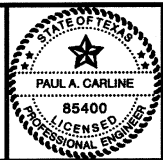
CAUTION!!
MT. ZION WSC WATERLINE IN AREA.
CONTACT DWIGHT LINDOP AT
972-670-9091 FOR LOCATES PRIOR
TO EXCAVATING IN THIS AREA.



This record drawing is a compilation of the sealed engineering drawing for this project, modified by addenda, change orders and information furnished by the contractor. The information shown on the record drawings that was provided by the contractor or others not associated with the design engineer cannot be verified for accuracy or completeness. This original sealed drawings are on file at the offices of Birkhoff, Hendricks & Conway, L.L.P.
BY PAC DATE 4/7/2011

FIELD CHANGE NO. 1 - NOVEMBER 17, 2009

BIRKHOFF, HENDRICKS & CONWAY, L.L.P.
PROFESSIONAL ENGINEERS
Texas Firm F526
11910 Greenville Ave., Suite 600
Dallas, Texas (214) 361-7900



[Signature]
4/11/11

CITY OF ROCKWALL, TEXAS
QUAIL RUN WATER LINE
PLAN-PROFILE STA. 50+00 TO STA. 55+00

BHC PROJECT NO. 2007-129	SHEET NO. 29A
April, 2011	