

These plans and related specifications were prepared for construction of this specific project only. Reuse of these documents is not permitted without written authorization of Birkhoff, Hendricks, & Conway, L.L.P.

MATCH LINE STA. 40+00  
N 7036198.8108, E 2599403.8328

MATCH LINE STA. 45+00  
N 7036694.4159, E 2599449.1826

N 7036198.9454  
E 2599403.8315  
P.I. STA. 40+00.13  
Δ = 06°24'08" RT.  
PULL PIPE

N 7036266.2307  
E 2599410.7298  
P.I. STA. 40+67.77  
Δ = 06°25'54" RT.  
PULL PIPE

N 7036417.8611  
E 2599443.7498  
P.I. STA. 42+22.96  
Δ = 06°45'04" LT.  
PULL PIPE

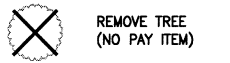
N 7036449.7551  
E 2599446.8401  
STA. 42+55  
FURNISH & INSTALL:  
1-12"x8" TEE  
1-6" GATE VALVE  
1-8" GATE VALVE  
6 L.F. 6" WATERLINE  
6 L.F. 8" WATERLINE  
1-FIRE HYDRANT  
1-8" PLUG

N 7036513.5162  
E 2599453.018  
P.I. STA. 43+19.06  
Δ = 06°44'56" LT.  
PULL PIPE

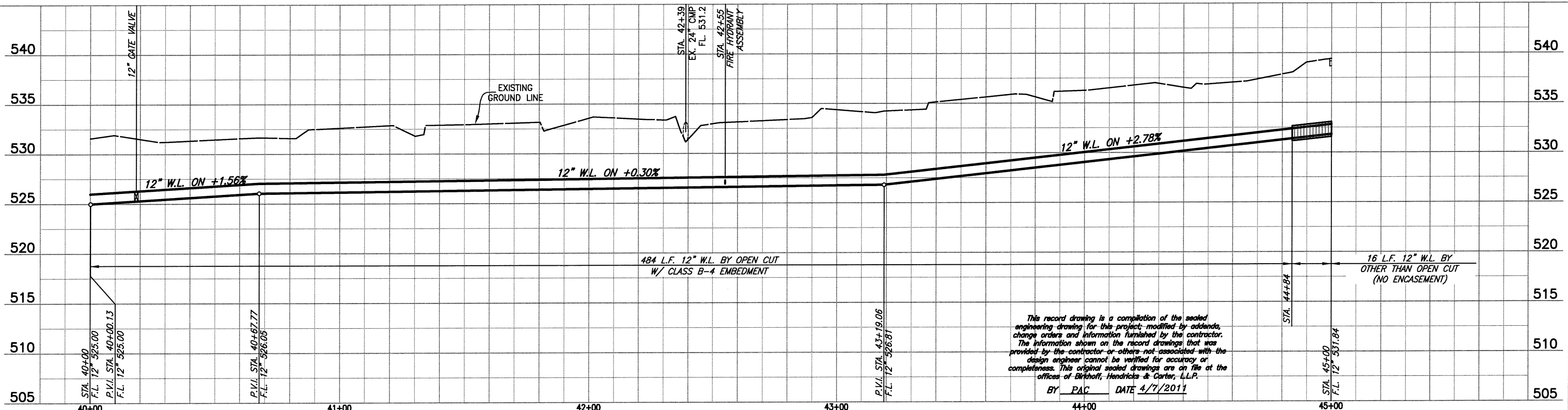
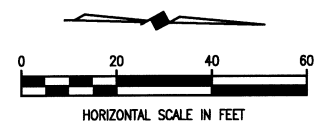
FURNISH & INSTALL:  
12-INCH WATERLINE

STA. 44+84 TO STA. 45+00  
FURNISH & INSTALL  
16 L.F. 12" WATERLINE  
BY OTHER THAN OPEN CUT  
(NO ENCASEMENT)

**LEGEND**



**CAUTION !!**  
MT. ZION WSC WATERLINE IN AREA.  
CONTACT DWIGHT LINDOP AT  
972-670-9091 FOR LOCATES PRIOR  
TO EXCAVATING IN THIS AREA.



FIELD CHANGE NO. 1 - NOVEMBER 17, 2009

**BIRKHOFF, HENDRICKS & CONWAY, L.L.P.**  
PROFESSIONAL ENGINEERS  
Texas Firm 526  
11910 Greenville Ave., Suite 600  
Dallas, Texas (214) 361-7900

**CITY OF ROCKWALL, TEXAS**  
QUAIL RUN WATER LINE  
PLAN-PROFILE STA. 40+00 TO STA. 45+00

BHC PROJECT NO. 2007-129	SHEET NO. 28
April, 2011	