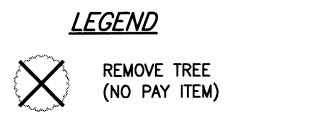
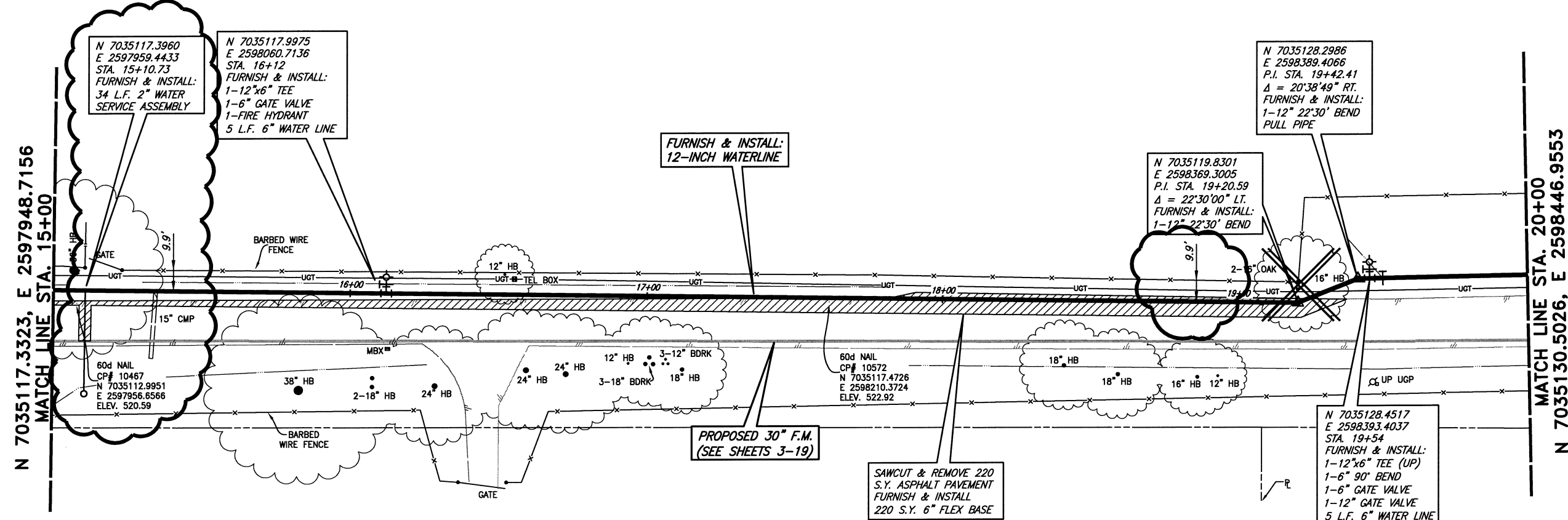
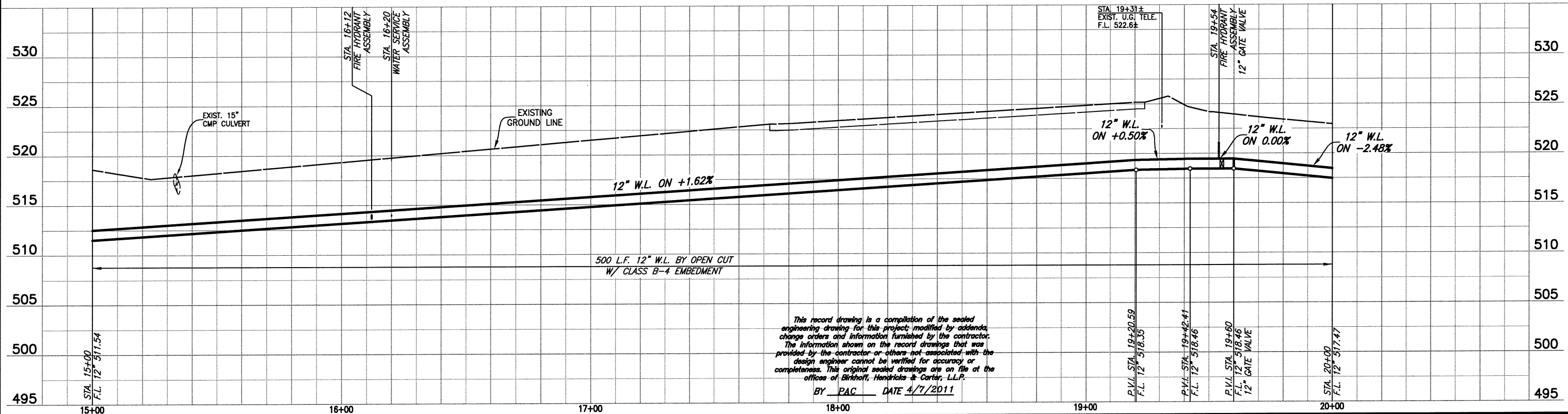
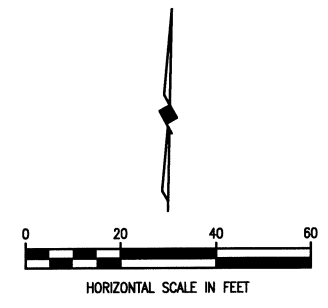


These plans and related specifications were prepared for construction of this specific project only. Reuse of these documents is not permitted without written authorization of Birkhoff, Hendricks, & Conway, L.L.P.



CAUTION !!
 MT. ZION WSC WATERLINE IN AREA.
 CONTACT DWIGHT LINDOP AT
 972-670-9091 FOR LOCATES PRIOR
 TO EXCAVATING IN THIS AREA.



This record drawing is a compilation of the sealed engineering drawing for this project, modified by addenda, change orders and information furnished by the contractor. The information shown on the record drawings that was provided by the contractor or others not associated with the design engineer cannot be verified for accuracy or completeness. This original sealed drawings are on file at the offices of Birkhoff, Hendricks & Carter, L.L.P.
 BY PAC DATE 4/7/2011

FIELD CHANGE NO. 1 - NOVEMBER 17, 2009

BIRKHOFF, HENDRICKS & CONWAY, L.L.P.
 PROFESSIONAL ENGINEERS
 Texas Firm F526
 11910 Greenville Ave., Suite 600
 Dallas, Texas (214) 361-7900



[Signature]
 11/11/11

CITY OF ROCKWALL, TEXAS
 QUAIL RUN WATER LINE
 PLAN-PROFILE STA. 15+00 TO STA. 20+00

BHC PROJECT NO. 2007-129
 April, 2011
 SHEET NO. **23**