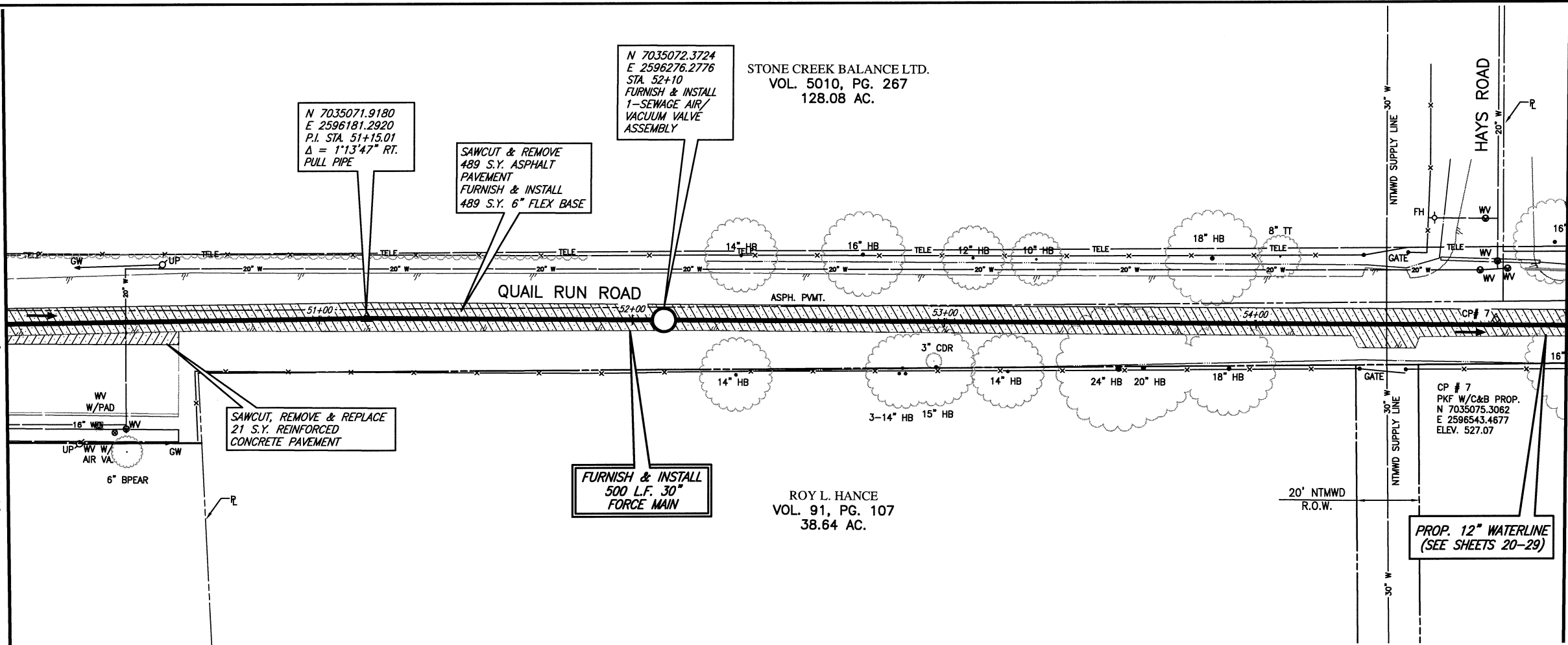


These plans and related specifications were prepared for construction of this specific project only. Reuse of these documents is not permitted without written authorization of Birkhoff, Hendricks, & Conway, L.L.P.

MATCH LINE STA. 50+00
N 7035068.8996, E 2596066.3181



N 7035071.9180
E 2596181.2920
P.I. STA. 51+15.01
Δ = 1'13'47" RT.
PULL PIPE

SAWCUT & REMOVE
489 S.Y. ASPHALT
PAVEMENT
FURNISH & INSTALL
489 S.Y. 6" FLEX BASE

N 7035072.3724
E 2596276.2776
STA 52+10
FURNISH & INSTALL
1-SEWAGE AIR/
VACUUM VALVE
ASSEMBLY

STONE CREEK BALANCE LTD.
VOL. 5010, PG. 267
128.08 AC.

SAWCUT, REMOVE & REPLACE
21 S.Y. REINFORCED
CONCRETE PAVEMENT

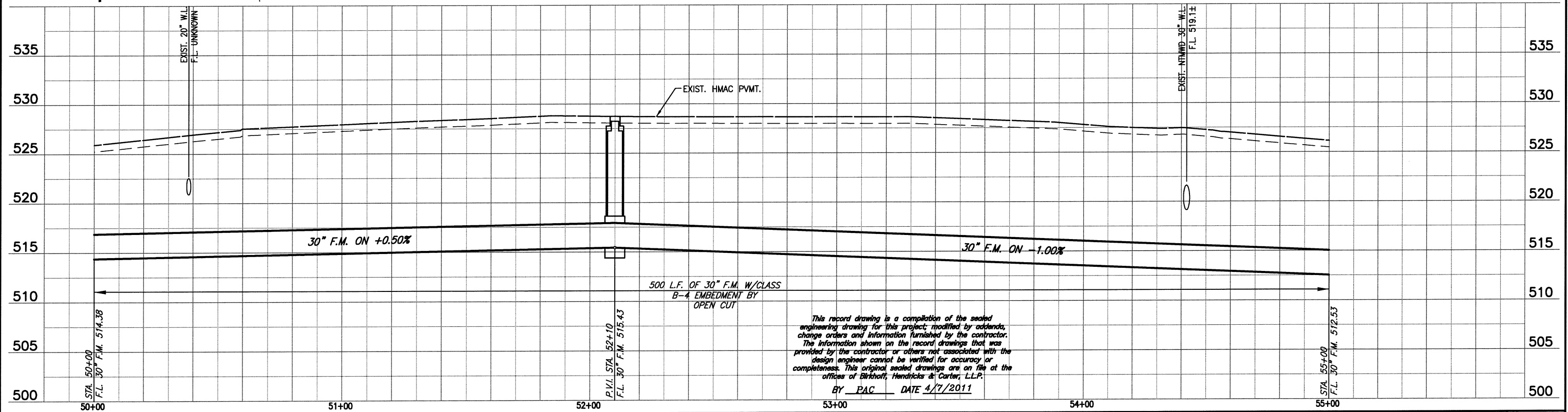
FURNISH & INSTALL
500 L.F. 30"
FORCE MAIN

ROY L. HANCE
VOL. 91, PG. 107
38.64 AC.

CP # 7
PKF W/C&B PROP.
N 7035075.3062
E 2596543.4677
ELEV. 527.07

PROP. 12" WATERLINE
(SEE SHEETS 20-29)

CAUTION!!
NTMWD WATER LINE IN AREA.
CONTACT NTMWD AT 972-442-5405
FOR LOCATES & APPROVAL PRIOR TO
EXCAVATING IN THIS AREA.



This record drawing is a compilation of the sealed engineering drawing for this project, modified by addenda, change orders and information furnished by the contractor. The information shown on the record drawings that was provided by the contractor or others not associated with the design engineer cannot be verified for accuracy or completeness. This original sealed drawings are on file at the offices of Birkhoff, Hendricks & Conway, L.L.P.
BY PAC DATE 4/7/2011

FIELD CHANGE NO. 1 - NOVEMBER 17, 2009

BIRKHOFF, HENDRICKS & CONWAY, L.L.P.
PROFESSIONAL ENGINEERS
Texas Firm F526
11910 Greenville Ave., Suite 600
Dallas, Texas 75243 (214) 361-7900



Paul A. Carline
11/7/09

CITY ROCKWALL, TEXAS
SQUABBLE CREEK
30 INCH FORCE MAIN
PLAN AND PROFILE
STA. 50+00 TO STA. 55+00

BHC
PROJECT NO.
2007-110
July 2009

SHEET NO.
13