

STONE CREEK BALANCE LTD.
VOL. 5010, PG. 267
128.08 AC.

N 7035067.0102
E 2595994.3489
P.I. STA. 49+28.01
Δ = 1'05'27" LT.
PULL PIPE

FURNISH & INSTALL
500 L.F. 30"
FORCE MAIN

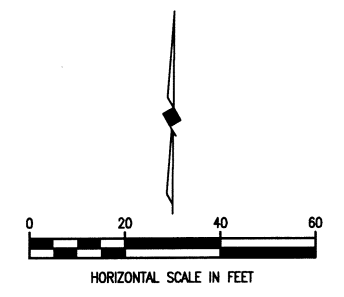
SAWCUT & REMOVE
252 S.Y. ASPHALT
PAVEMENT
FURNISH & INSTALL
252 S.Y. 6" FLEX BASE

SAWCUT, REMOVE & REPLACE
4 S.Y. REINFORCED
CONCRETE PAVEMENT

CP # 6
1/2" IRON ROD
N 7035069.5613
E 2595682.5252
ELEV. 520.99

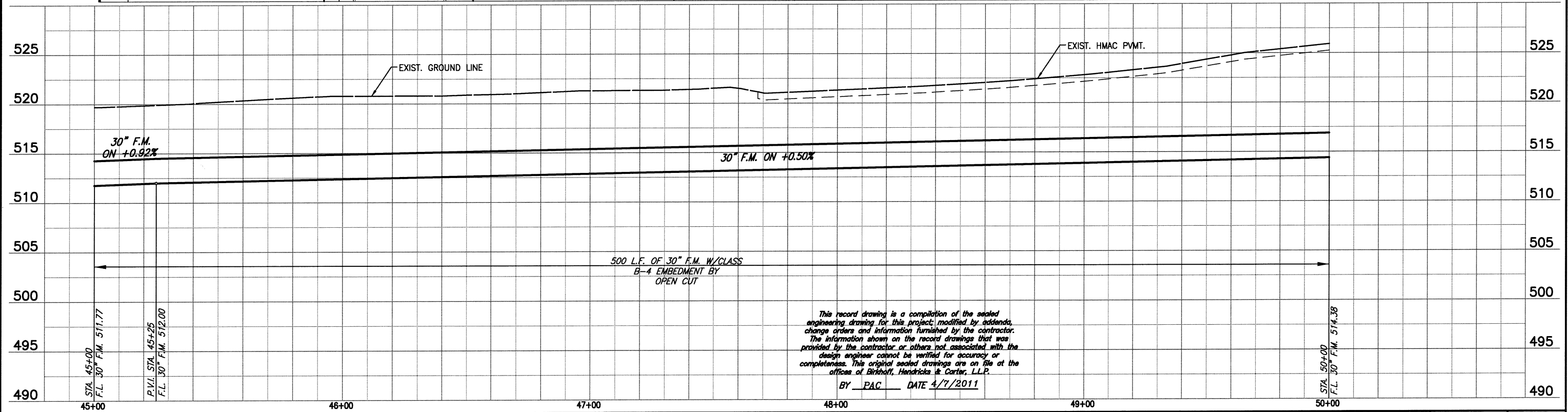
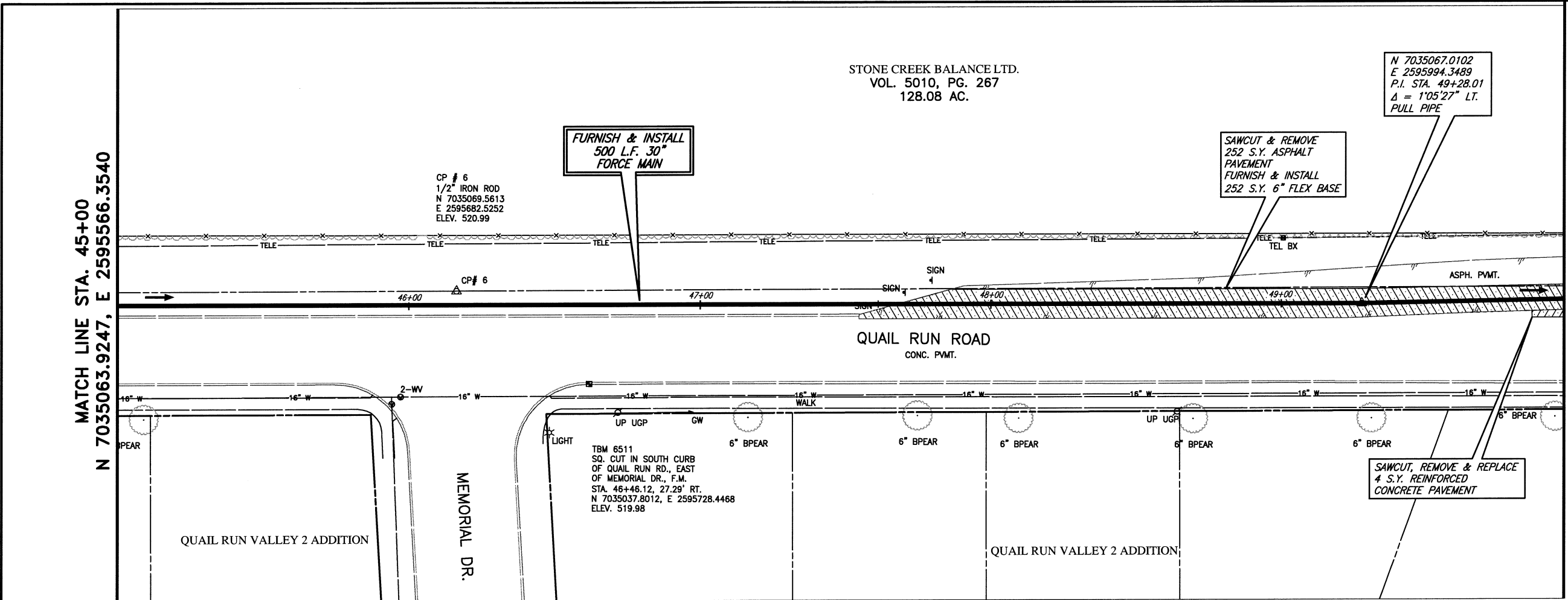
TBM 6511
SQ. CUT IN SOUTH CURB
OF QUAIL RUN RD., EAST
OF MEMORIAL DR., F.M.
STA. 46+46.12, 27.29' RT.
N 7035037.8012, E 2595728.4468
ELEV. 519.98

This record drawing is a compilation of the sealed
engineering drawing for this project, modified by addenda,
change orders and information furnished by the contractor.
The information shown on the record drawings that was
provided by the contractor or others not associated with the
design engineer cannot be verified for accuracy or
completeness. This original sealed drawings are on file at the
office of Birkhoff, Hendricks & Carter, L.L.P.
BY PAC DATE 4/7/2011



MATCH LINE STA. 45+00
N 7035063.9247, E 2595566.3540

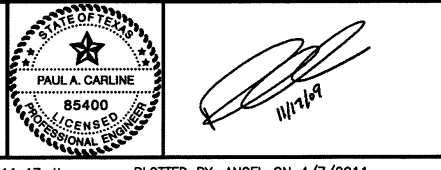
N 7035068.8996, E 2596066.3181
MATCH LINE STA. 50+00



These plans and related specifications were prepared for construction of this specific project only. Release of these documents is not permitted without written authorization of Birkhoff, Hendricks & Conway, L.L.P.

FIELD CHANGE NO. 1 - NOVEMBER 17, 2009

BIRKHOFF, HENDRICKS & CONWAY, L.L.P.
PROFESSIONAL ENGINEERS
Texas Firm F526
11910 Greenville Ave., Suite 600
Dallas, Texas 75243 (214) 361-7900



CITY ROCKWALL, TEXAS
SQUABBLE CREEK
30 INCH FORCE MAIN
PLAN AND PROFILE
STA. 45+00 TO STA. 50+00

BHC PROJECT NO. 2007-110	SHEET NO. 12
July 2009	