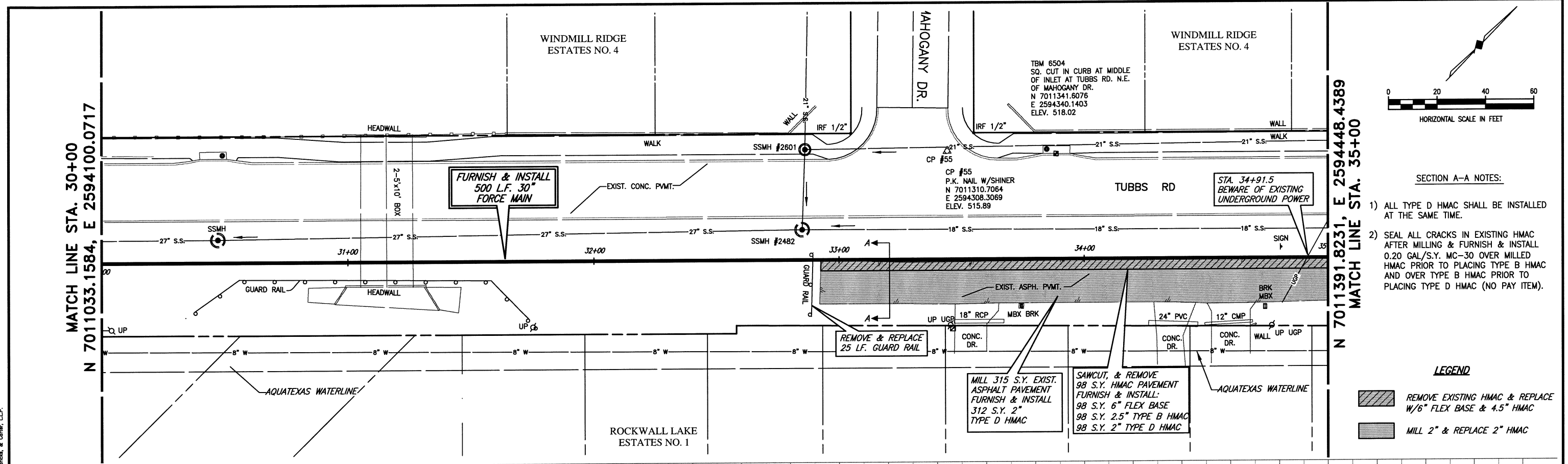


These plans and related specifications were prepared for construction of this specific project only. Reuse of these documents is not permitted without written authorization of Birkhoff, Hendricks & Carter, L.L.P.



MATCH LINE STA. 30+00
N 7011033.1584, E 2594100.0717

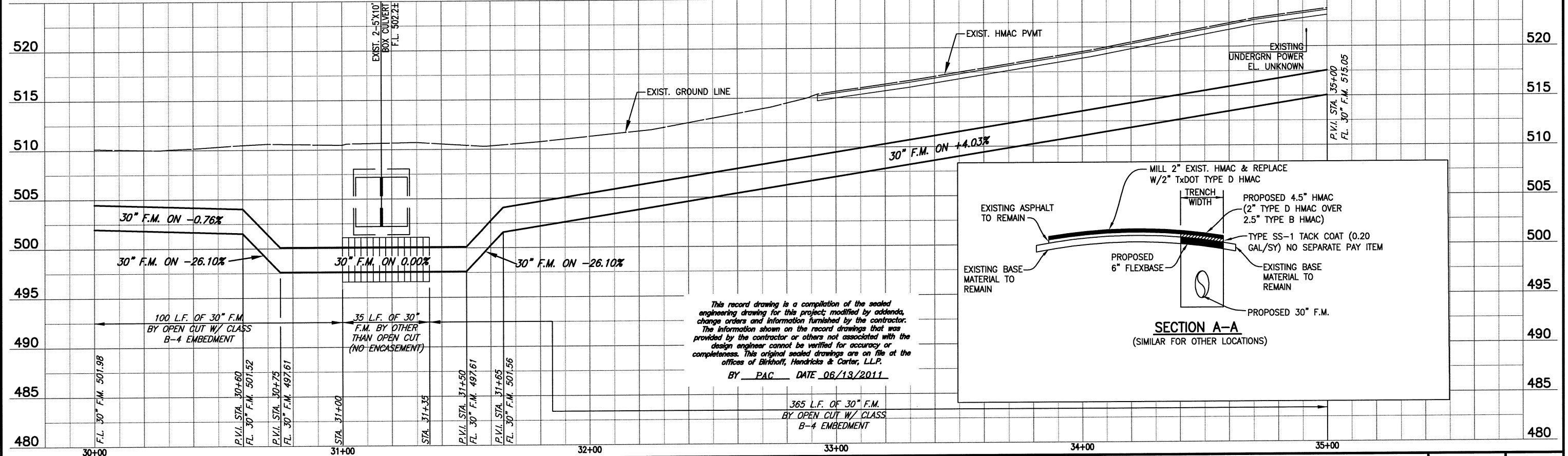
MATCH LINE STA. 35+00
N 7011391.8231, E 2594448.4389

SECTION A-A NOTES:

- 1) ALL TYPE D HMAC SHALL BE INSTALLED AT THE SAME TIME.
- 2) SEAL ALL CRACKS IN EXISTING HMAC AFTER MILLING & FURNISH & INSTALL 0.20 GAL/S.Y. MC-30 OVER MILLED HMAC PRIOR TO PLACING TYPE B HMAC AND OVER TYPE B HMAC PRIOR TO PLACING TYPE D HMAC (NO PAY ITEM).

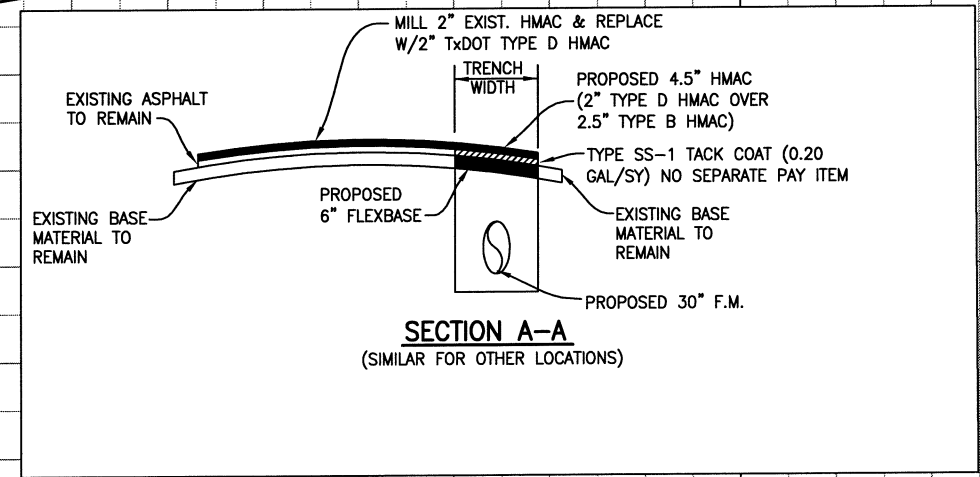
LEGEND

- REMOVE EXISTING HMAC & REPLACE W/6" FLEX BASE & 4.5" HMAC
- MILL 2" & REPLACE 2" HMAC



This record drawing is a compilation of the sealed engineering drawing for this project, modified by addenda, change orders and information furnished by the contractor. The information shown on the record drawings that was provided by the contractor or others not associated with the design engineer cannot be verified for accuracy or completeness. This original sealed drawings are on file at the offices of Birkhoff, Hendricks & Carter, L.L.P.

BY PAC DATE 06/13/2011



BIRKHOFF, HENDRICKS & CARTER, L.L.P.
 PROFESSIONAL ENGINEERS
 Texas Firm F526
 11910 Greenville Ave., Suite 600
 Dallas, Texas (214) 361-7900



[Signature]
4/2/10

CITY OF ROCKWALL, TEXAS
 SQUABBLE CREEK FORCE MAIN
 PLAN AND PROFILE
 STA. 30+00 TO STA. 35+00

BHC
 PROJECT NO.
 2007-110
 April, 2010

SHEET NO.
8