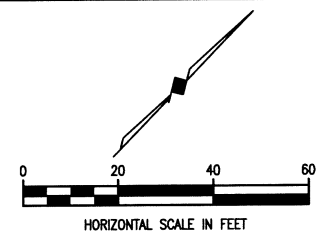


These plans and related specifications were prepared for construction of this specific project only. Reuse of these documents is not permitted without written authorization of Birkhoff, Hendricks, & Carter, L.L.P.

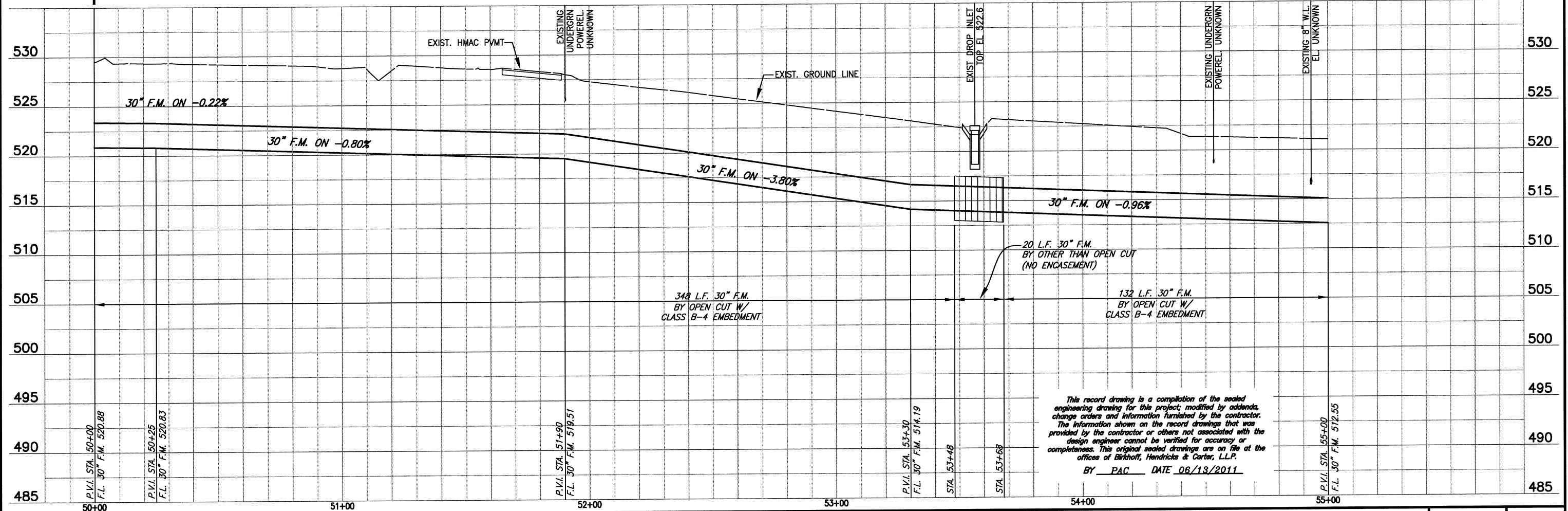
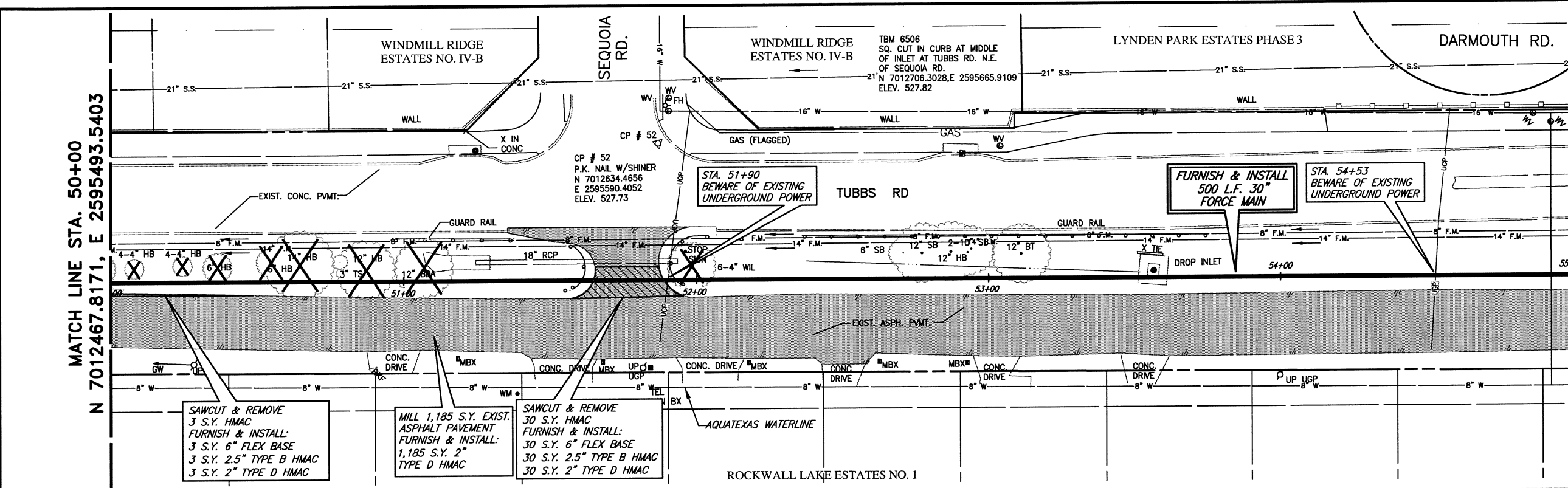
MATCH LINE STA. 50+00  
N 7012467.8171, E 2595493.5403

N 7012826.4817, E 2595841.9074  
MATCH LINE STA. 55+00



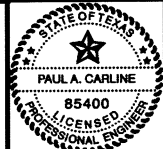
**LEGEND**

- REMOVE EXISTING HMAc & REPLACE W/6" FLEX BASE & 4.5" HMAc
- MILL 2" & REPLACE 2" HMAc
- PROPOSED TREE REMOVAL



This record drawing is a compilation of the sealed engineering drawing for this project; modified by addenda, change orders and information furnished by the contractor. The information shown on the record drawings that was provided by the contractor or others not associated with the design engineer cannot be verified for accuracy or completeness. This original sealed drawings are on file at the offices of Birkhoff, Hendricks & Carter, L.L.P.  
BY PAC DATE 06/13/2011

**BIRKHOFF, HENDRICKS & CARTER, L.L.P.**  
PROFESSIONAL ENGINEERS  
Texas Firm F526  
11910 Greenville Ave., Suite 600  
Dallas, Texas (214) 361-7900



*Signature of Paul A. Carline*  
4/2/10

**CITY OF ROCKWALL, TEXAS**  
SQUABBLE CREEK FORCE MAIN  
**PLAN AND PROFILE**  
STA. 50+00 TO STA. 55+00

BHC PROJECT NO. 2007-110  
April, 2010  
SHEET NO. **12**