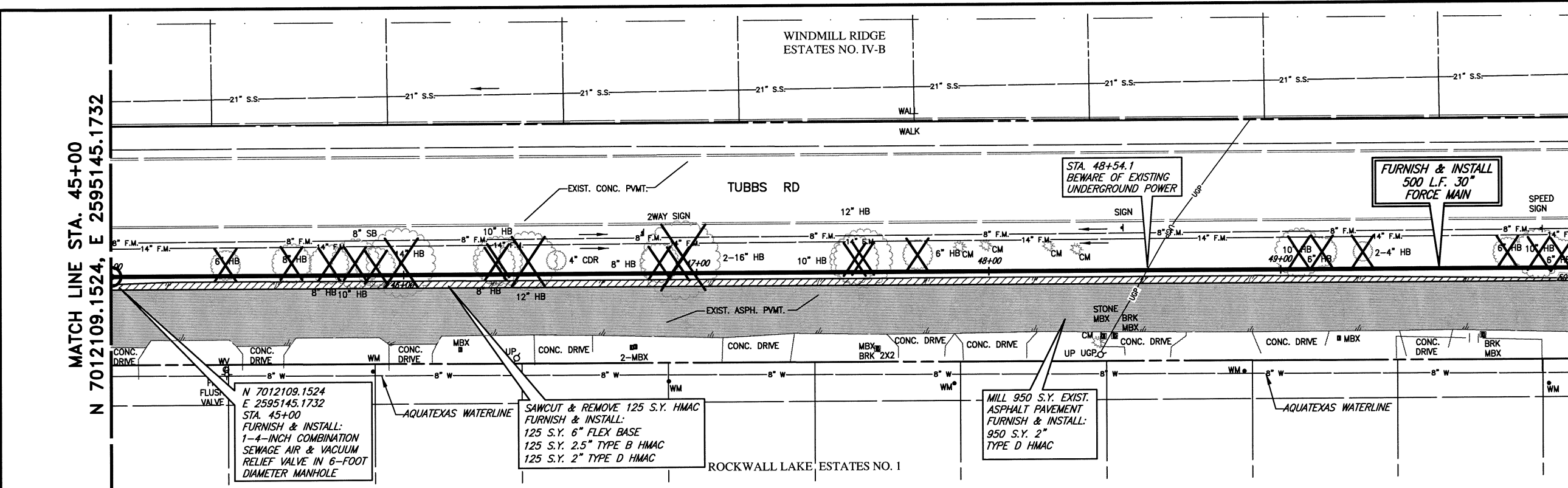
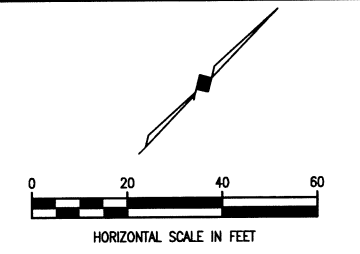


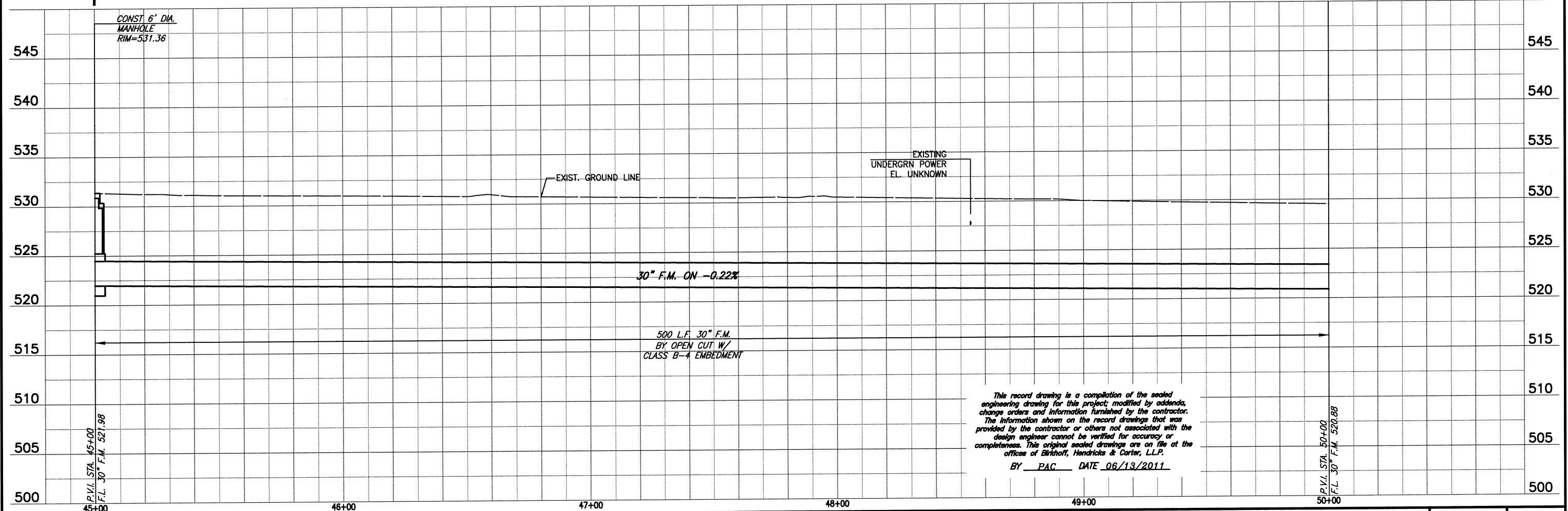
These plans and related specifications were prepared for construction of this specific project only. Reuse of these documents is not permitted without written authorization of Birkhoff, Hendricks & Carter, L.L.P.

MATCH LINE STA. 45+00
N 7012109.1524, E 2595145.1732

N 7012467.8171, E 2595493.5403
MATCH LINE STA. 50+00



- LEGEND**
- REMOVE EXISTING HMAC & REPLACE W/6" FLEX BASE & 4.5" HMAC
 - MILL 2" & REPLACE 2" HMAC
 - PROPOSED TREE REMOVAL



This record drawing is a compilation of the sealed engineering drawing for this project; modified by addenda, change orders and information furnished by the contractor. The information shown on the record drawings that was provided by the contractor or others not associated with the design engineer cannot be verified for accuracy or completeness. This original sealed drawings are on file at the offices of Birkhoff, Hendricks & Carter, L.L.P.
BY PAC DATE 06/13/2011

P.V.I. STA. 45+00
F.L. 30" F.M. 521.98

P.V.I. STA. 50+00
F.L. 30" F.M. 520.88

BIRKHOFF, HENDRICKS & CARTER, L.L.P.
PROFESSIONAL ENGINEERS
Texas Firm F526
11910 Greenville Ave., Suite 600
Dallas, Texas (214) 361-7900



[Signature]
4/12/10

CITY OF ROCKWALL, TEXAS
SQUABBLE CREEK FORCE MAIN
PLAN AND PROFILE
STA. 45+00 TO STA. 50+00

BHC
PROJECT NO.
2007-110
April, 2010
SHEET NO.
11