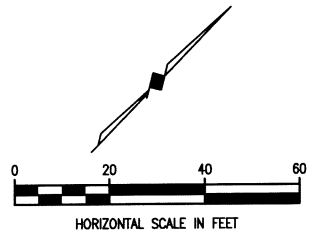
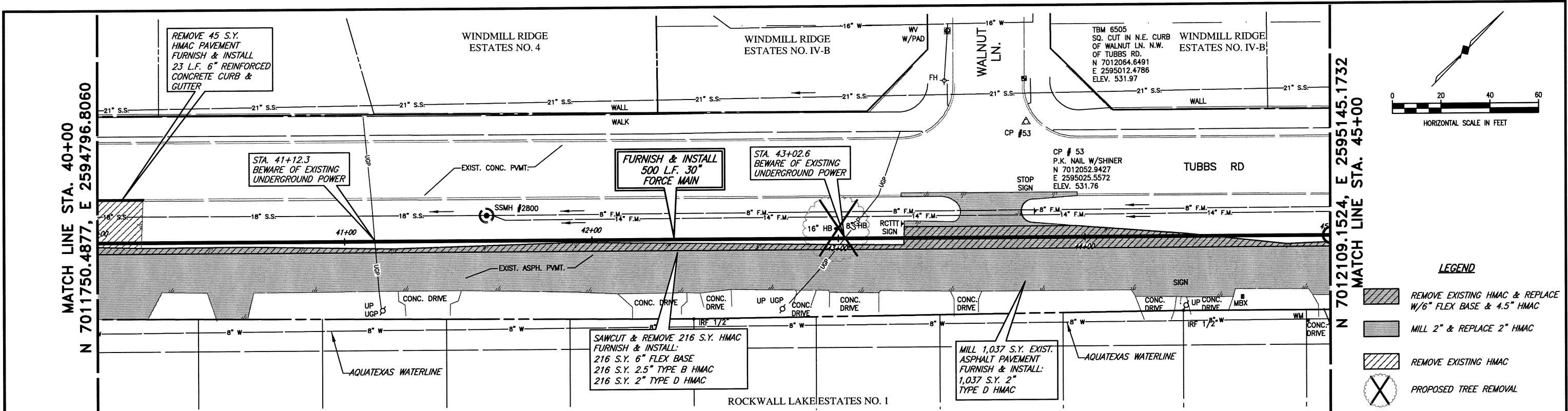
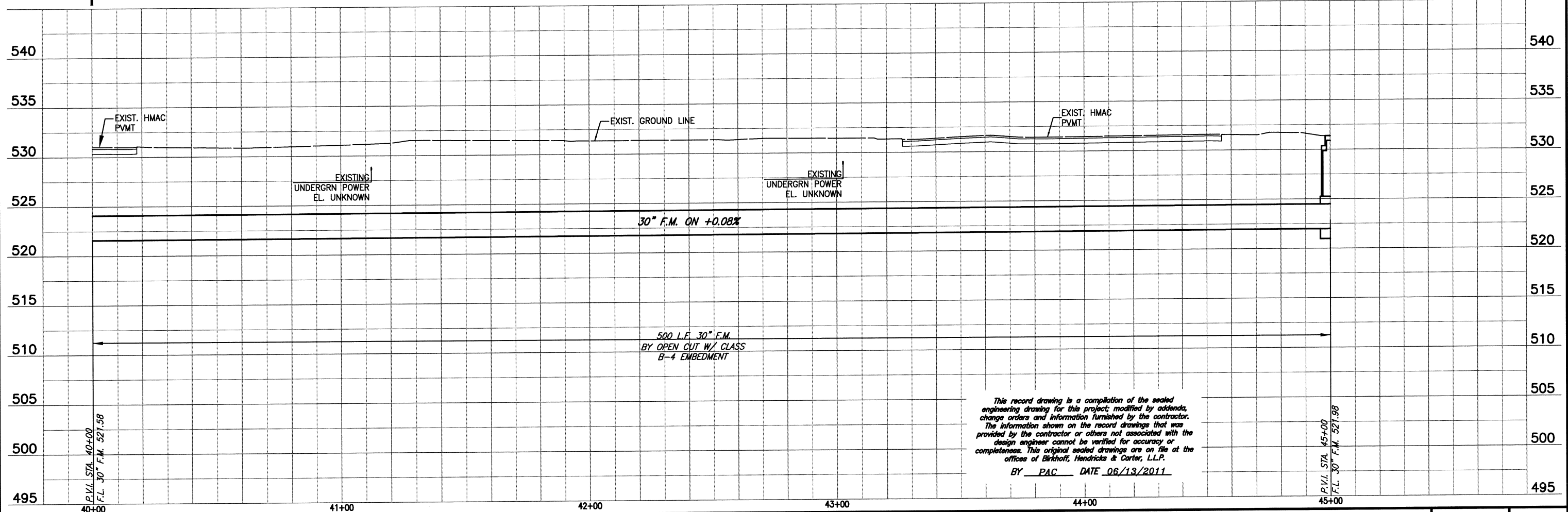


These plans and related specifications were prepared for construction of this specific project only. Reuse of these documents is not permitted without written authorization of Birkhoff, Hendricks & Carter, L.L.P.



- LEGEND**
- REMOVE EXISTING HMAC & REPLACE W/6" FLEX BASE & 4.5" HMAC
 - MILL 2" & REPLACE 2" HMAC
 - REMOVE EXISTING HMAC
 - PROPOSED TREE REMOVAL



This record drawing is a compilation of the sealed engineering drawing for this project; modified by addenda, change orders and information furnished by the contractor. The information shown on the record drawings that was provided by the contractor or others not associated with the design engineer cannot be verified for accuracy or completeness. This original sealed drawings are on file at the offices of Birkhoff, Hendricks & Carter, L.L.P.
 BY PAC DATE 06/13/2011

BIRKHOFF, HENDRICKS & CARTER, L.L.P.
 PROFESSIONAL ENGINEERS
 Texas Firm F526
 11910 Greenville Ave., Suite 600
 Dallas, Texas (214) 361-7900



Handwritten signature and date: 4/2/10

CITY OF ROCKWALL, TEXAS
 SQUABBLE CREEK FORCE MAIN
 PLAN AND PROFILE
 STA. 40+00 TO STA. 45+00

BHC
 PROJECT NO.
 2007-110
 SHEET NO.
10
 April, 2010