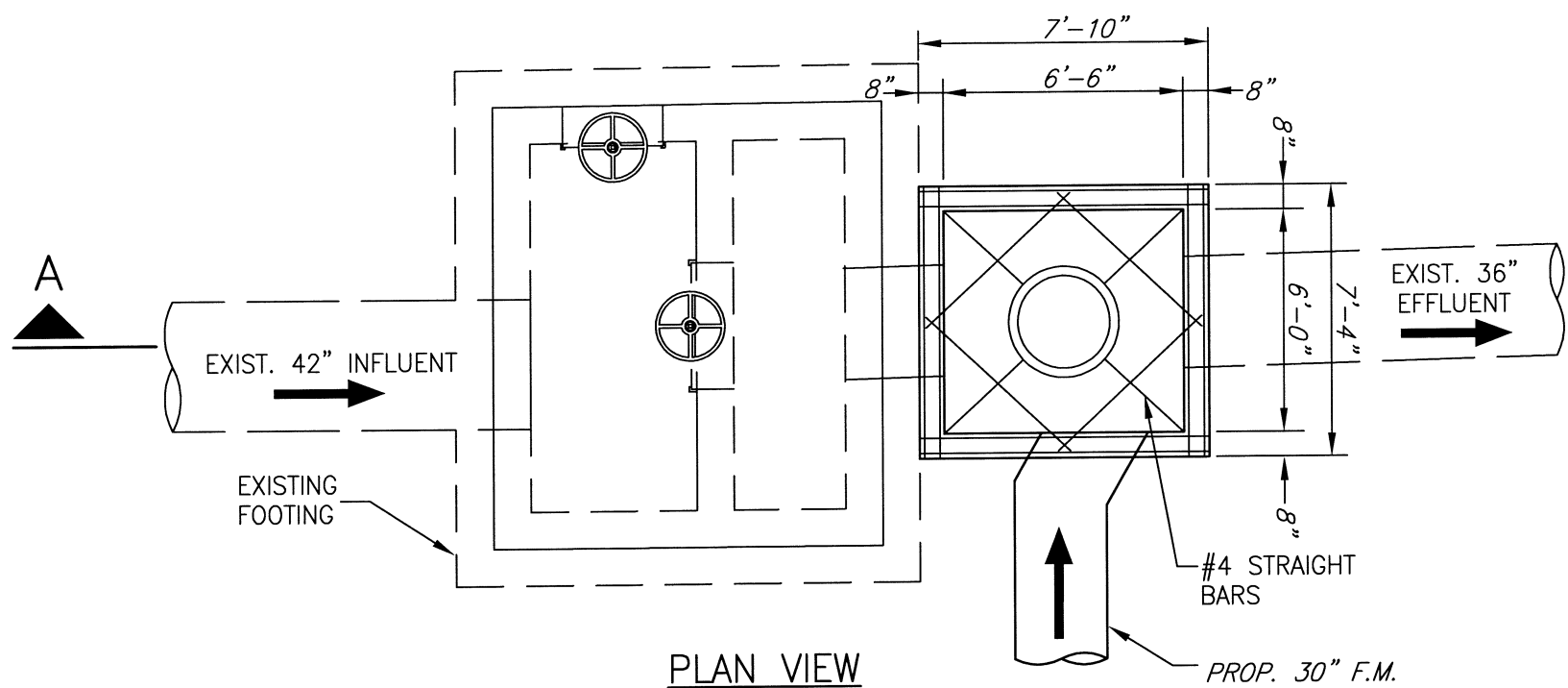
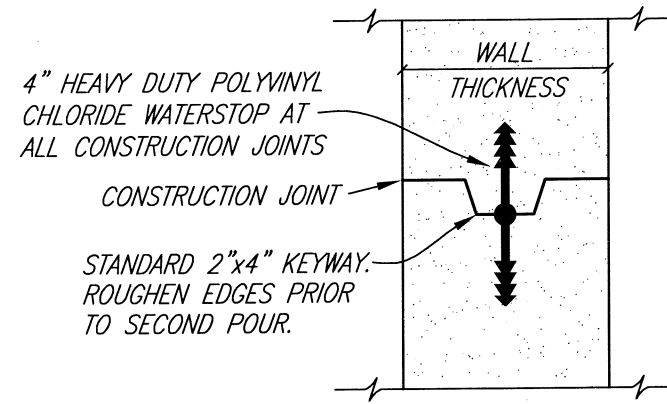


These plans and related specifications were prepared for construction of this specific project only. Reuse of these documents is not permitted without written authorization of Birkhoff, Hendricks & Carter, L.L.P.



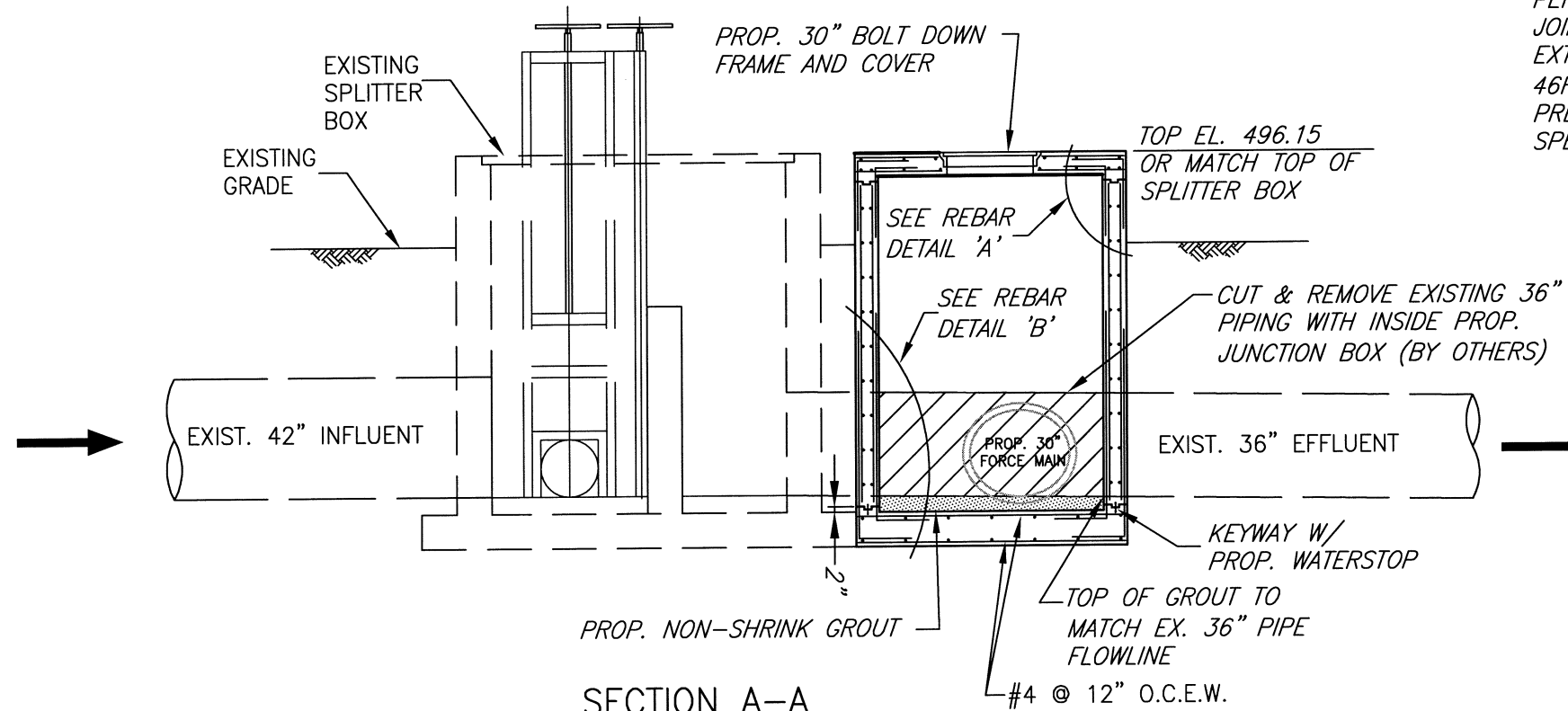
PLAN VIEW



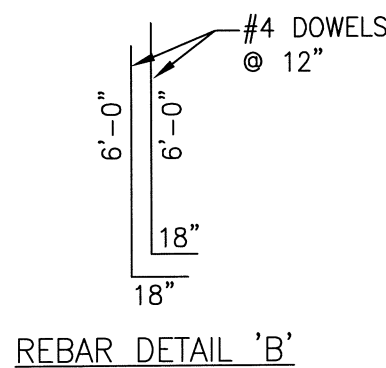
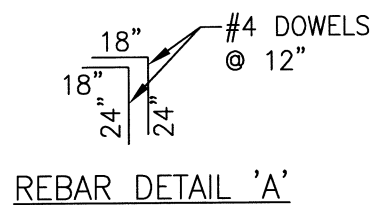
JUNCTION BOX CONSTRUCTION JOINT  
KEYWAY WITH WATERSTOP

NOTE:

1. ALL REBAR NOT NOTED SHALL BE #4 @ 12" O.C.E.W.
2. ALL CONCRETE AND GROUT SURFACES INSIDE THE JUNCTION BOX SHALL BE ABRASIVE BLASTED AND COATED WITH TNEMEC SERIES 218 MORTARCLAD OR SERIES 215 EPOXY SURFACER, TNEMEC SERIES 434 PERMA-SHIELD H2S OR SERIES 436 PERMA-SHIELD FR LINING (125 MIL DFT), SERIES 435 PERMA-GLAZE TOPCOAT (30 MIL DFT) AND THIOKOL 2235SL POLYSULFIDE JOINT SEALANT AS MANUFACTURED BY POLYSPEC, OR APPROVED EQUAL. EXTERIOR OF JUNCTION BOX EXPOSED TO SOIL SHALL BE COATED WITH 46H-413 H.B. TNEME-TAR (16 MIL DFT). ALL SURFACES SHALL BE PREPARED AND MATERIALS APPLIED IN ACCORDANCE WITH MANUFACTURERS SPECIFICATIONS.



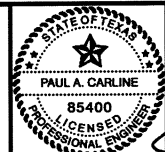
SECTION A-A  
PROPOSED JUNCTION BOX  
NOT TO SCALE



*This record drawing is a compilation of the sealed engineering drawing for this project; modified by addenda, change orders and information furnished by the contractor. The information shown on the record drawings that was provided by the contractor or others not associated with the design engineer cannot be verified for accuracy or completeness. This original sealed drawings are on file at the offices of Birkhoff, Hendricks & Carter, L.L.P.*

BY PAC DATE 06/13/2011

**BIRKHOFF, HENDRICKS & CARTER, L.L.P.**  
CONSULTING ENGINEERS  
Texas Firm F526  
11910 Greenville Ave., Suite 600  
Dallas, Texas (214) 361-7900



*[Signature]*  
6/16/10

**CITY OF ROCKWALL, TEXAS**  
SQUABBLE CREEK FORCE MAIN  
JUNCTION BOX DETAILS

BHC PROJECT NO. 2007-110  
August, 2010  
SHEET NO. 17