

11/12/03 JLC
 H:\Projects\Rockwall\2001178\Springer_Road\Sheets\2001178-505.dwg
 FULL SCALE 1=20
 XREF: 01178sw-BASE, SPRINGER_PROF

MATCH LINE STA. 20+00

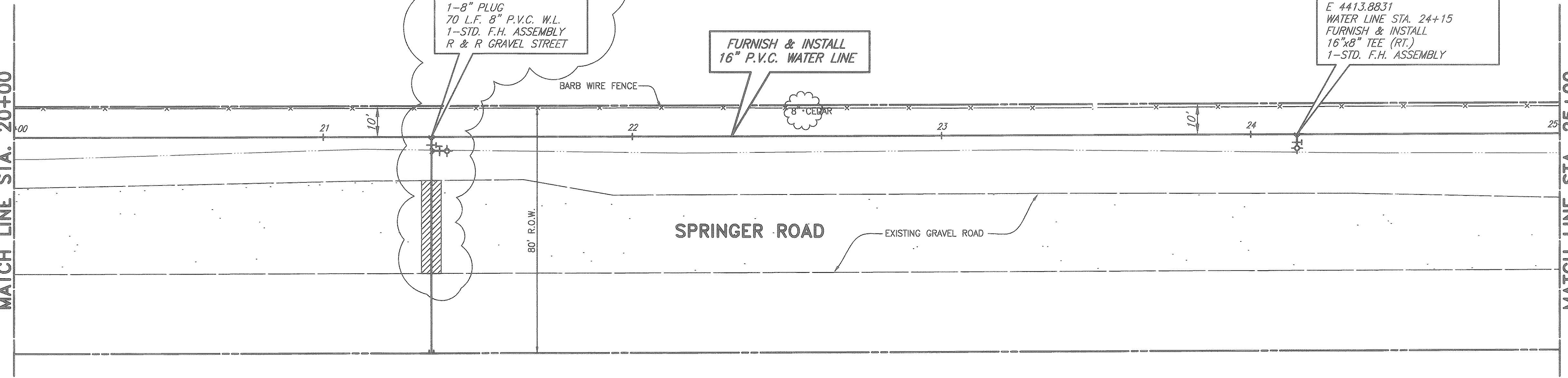
MATCH LINE STA. 25+00

ROCKWALL ECONOMIC DEVELOPMENT CORPORATION
 VOL. 2224, PG. 226
 D.R.R.C.T.

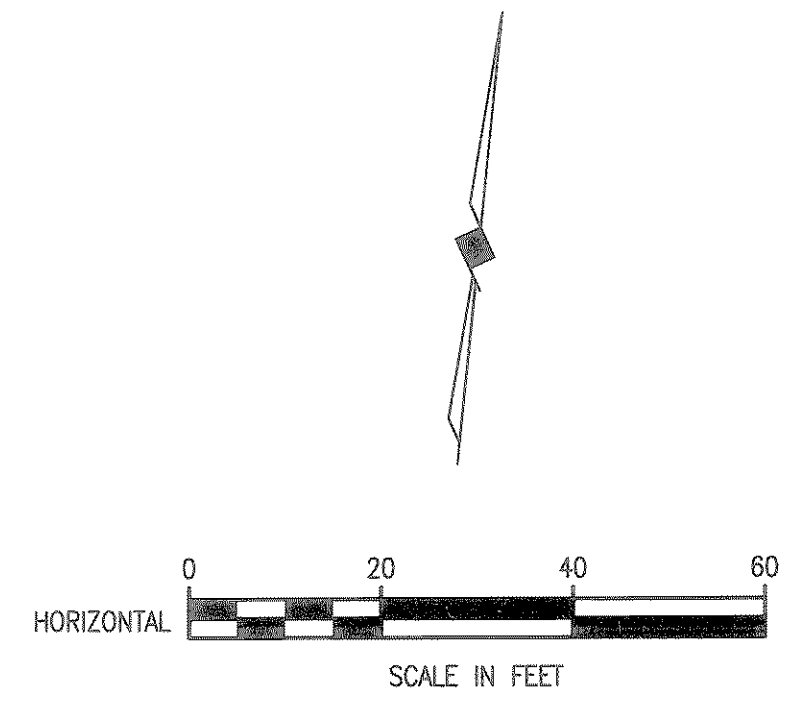
N 5033.2347
 E 4135.3475
 WATER LINE STA. 21+35
 FURNISH & INSTALL
 8"x6" TEE (RT.)
 16"x8" TEE (RT.)
 2-8" GATE VALVE
 1-8" PLUG
 70 L.F. 8" P.V.C. W.L.
 1-STD. F.H. ASSEMBLY
 R & R GRAVEL STREET

FURNISH & INSTALL
16" P.V.C. WATER LINE

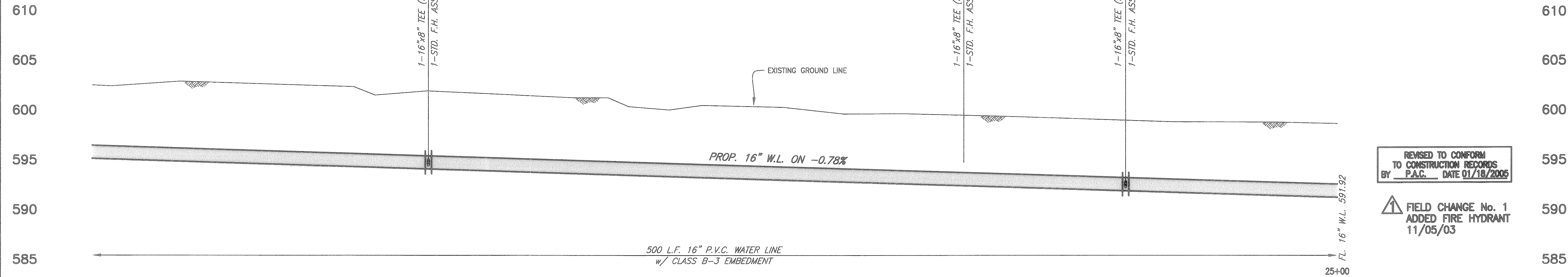
N 5061.8337
 E 4413.8831
 WATER LINE STA. 24+15
 FURNISH & INSTALL
 16"x8" TEE (RT.)
 1-STD. F.H. ASSEMBLY



COLIN-J PROPERTIES
 VOL. 1335, PG. 040
 D.R.R.C.T.



These plans and related specifications were prepared for construction of this specific project only. Reuse of these documents is not permitted without written authorization of Birkhoff, Hendricks & Conway, L.L.P.



REVISED TO CONFORM TO CONSTRUCTION RECORDS BY P.A.C. DATE 01/18/2005

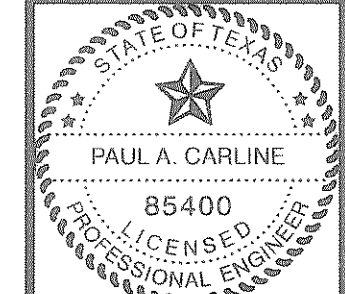
FIELD CHANGE No. 1
 ADDED FIRE HYDRANT
 11/05/03

CITY OF ROCKWALL, TEXAS

SPRINGER ROAD WATER LINE
 PLAN & PROFILE
 STA. 20+00 TO STA. 25+00

BIRKHOFF, HENDRICKS & CONWAY, L.L.P.
 CONSULTING ENGINEERS
 Dallas, Texas

24
 THESE DOCUMENTS ARE FOR BIDDING, CONSTRUCTION, AND PERMIT PURPOSES.
 DATE: 8/22/03



DESIGNED BY: P.A.C.	PROJECT: 2001-178	SHEET NO. 5
DRAWN BY: B.H.C.	DATE: NOVEMBER, 2003	OF 10 SHEETS