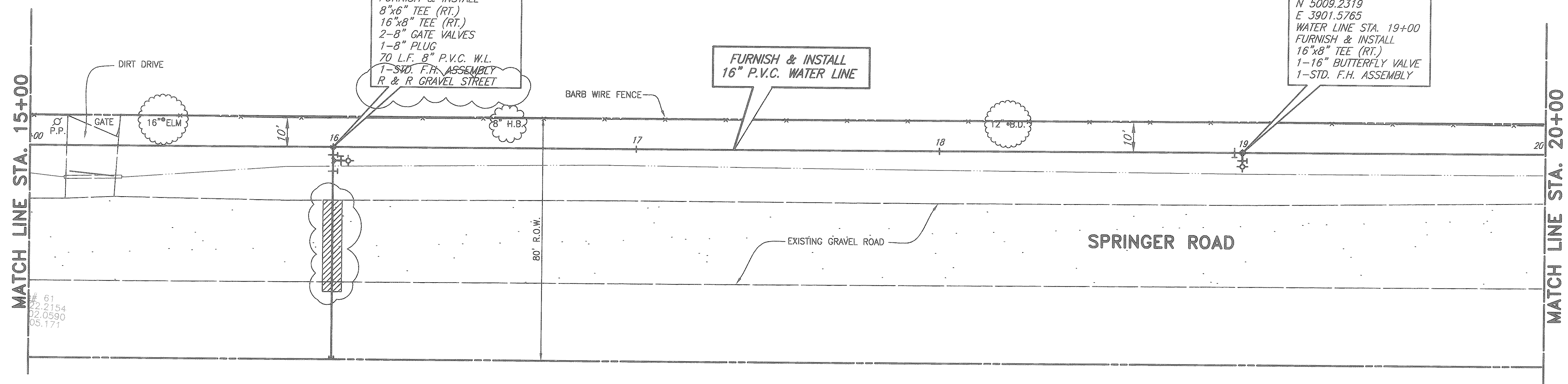


ROCKWALL ECONOMIC
DEVELOPMENT CORPORATION

VOL. 2224, PG. 226
D.R.R.C.T.

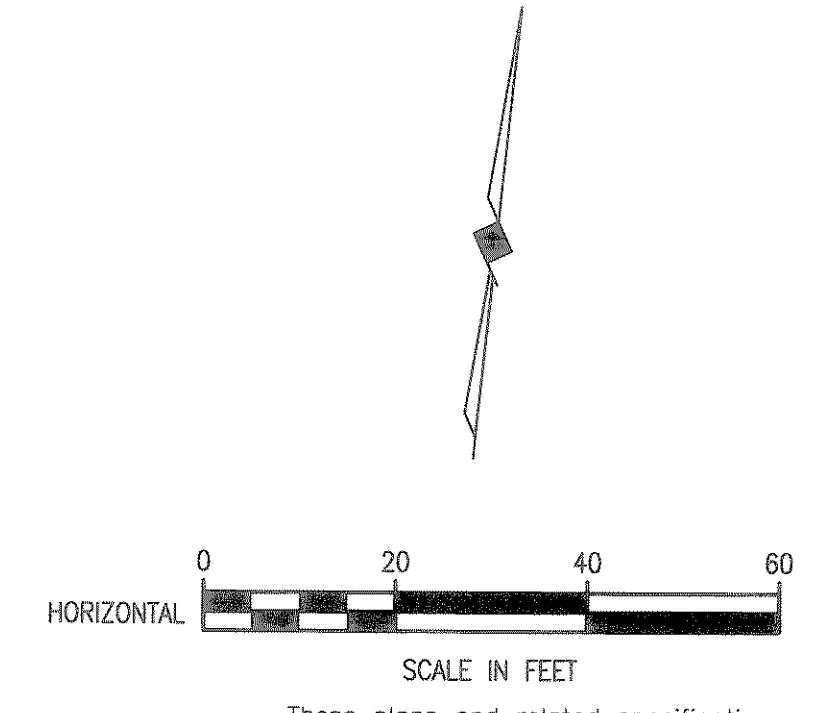


61
22.2154
02.0590
05.171

N 4978.5900
E 3603.1455
WATER LINE STA. 16+00
FURNISH & INSTALL
8"x6" TEE (RT.)
16"x8" TEE (RT.)
2-8" GATE VALVES
1-8" PLUG
70 L.F. 8" P.V.C. W.L.
1-STD. F.H. ASSEMBLY
R & R GRAVEL STREET

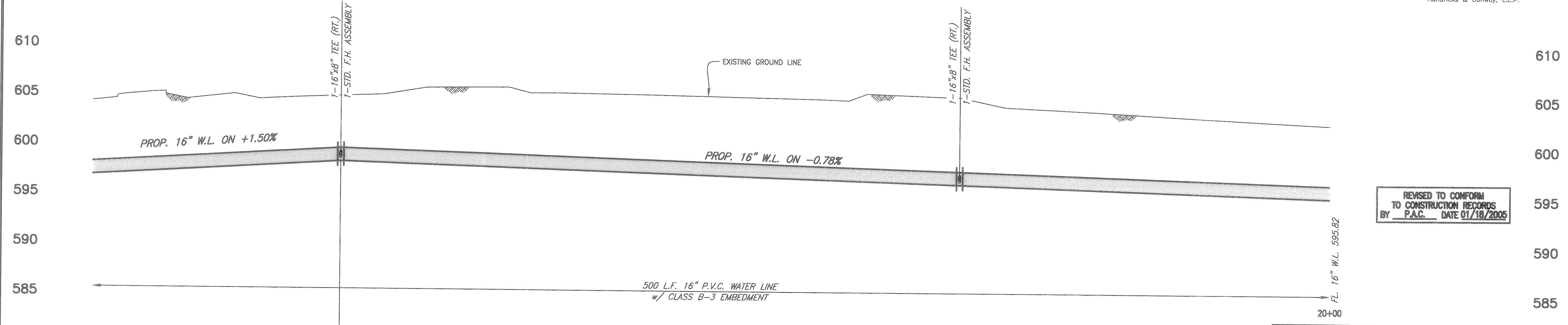
FURNISH & INSTALL
16" P.V.C. WATER LINE

N 5009.2319
E 3901.5765
WATER LINE STA. 19+00
FURNISH & INSTALL
16"x8" TEE (RT.)
1-16" BUTTERFLY VALVE
1-STD. F.H. ASSEMBLY



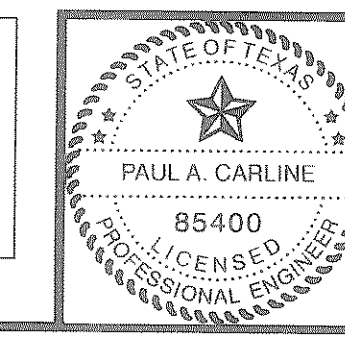
These plans and related specifications were prepared for construction of this specific project only. Reuse of these documents is not permitted without written authorization of Birkhoff, Hendricks & Conway, L.L.P.

8/21/03 slc H:\Projects\Rockwall\2001178\Springer_Road\Sheets\2001178-S04.dwg FULL SCALE 1=20 XREF: 01178swl-BASE, SPRINGER_PROF



REVISED TO CONFORM
TO CONSTRUCTION RECORDS
BY P.A.C. DATE 01/18/2005

19
THESE DOCUMENTS ARE FOR
BIDDING, CONSTRUCTION,
AND PERMIT PURPOSES.
DATE: 8/22/03



CITY OF ROCKWALL, TEXAS

SPRINGER ROAD WATER LINE
PLAN & PROFILE
STA. 15+00 TO STA. 20+00
BIRKHOFF, HENDRICKS & CONWAY, L.L.P.
CONSULTING ENGINEERS
Dallas, Texas

DESIGNED BY: P.A.C.	PROJECT: 2001-178	SHEET NO. 4
DRAWN BY: B.H.C.	DATE: AUGUST, 2003	OF 10 SHEETS