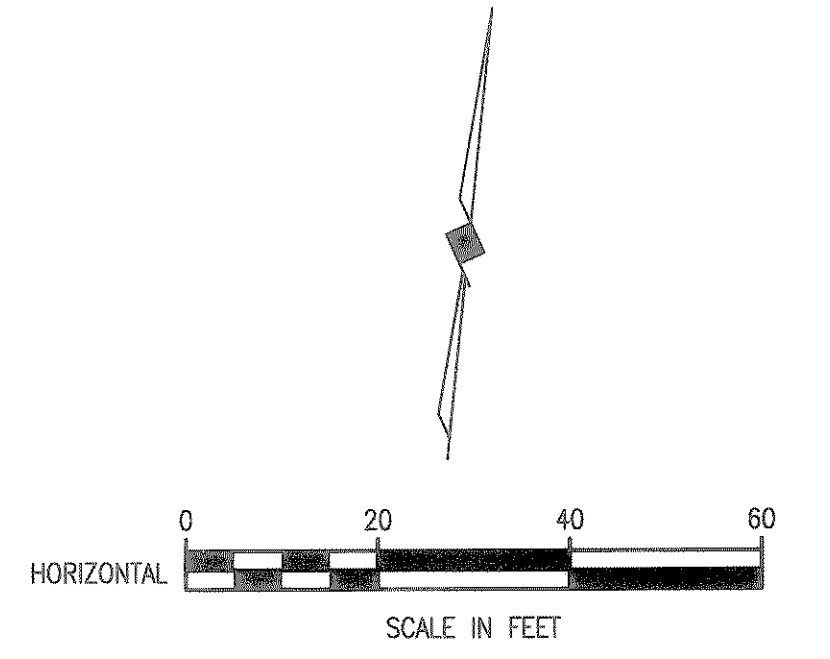
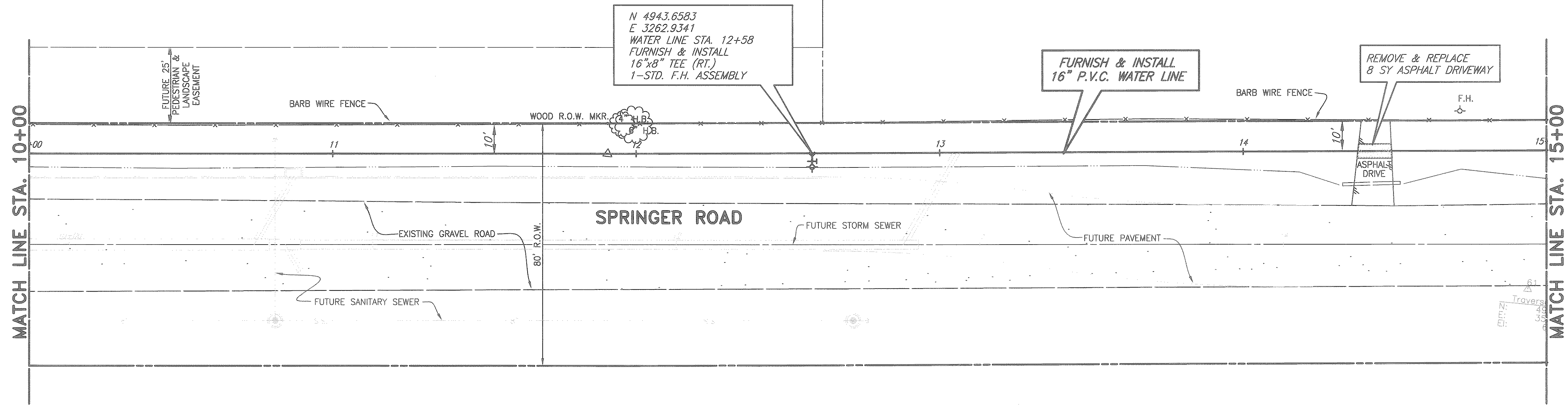
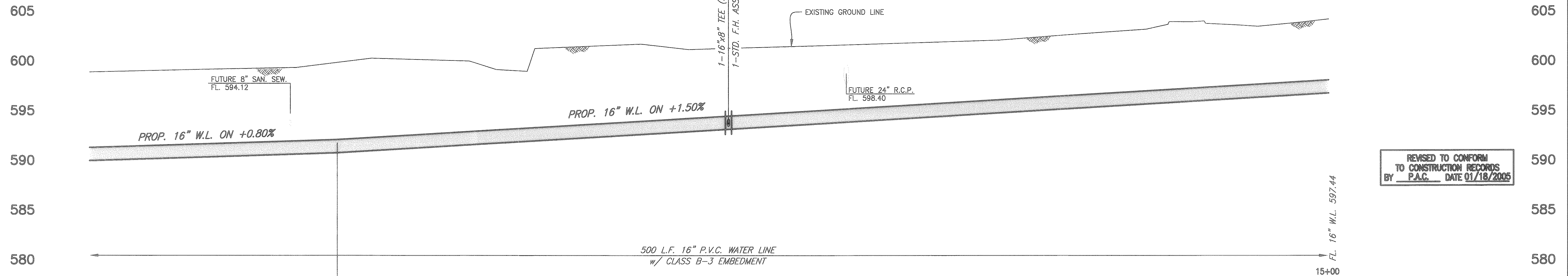


ROCKWALL ECONOMIC  
DEVELOPMENT CORPORATION  
VOL. 2224, PG. 226  
D.R.R.C.T.

ROCKWALL ECONOMIC  
DEVELOPMENT CORPORATION  
VOL. 2224, PG. 226  
D.R.R.C.T.



These plans and related specifications were prepared for construction of this specific project only. Reuse of these documents is not permitted without written authorization of Birkhoff, Hendricks & Conway, L.L.P.



REVISED TO CONFORM TO CONSTRUCTION RECORDS BY P.A.C. DATE 01/18/2005

8/21/03 JLC H:\Projects\Rockwall\2001178\Springer\_Road\Sheets\2001178-503.dwg FULL SCALE 1=20 XREF: 01178swl-BASE, SPRINGER\_PROF

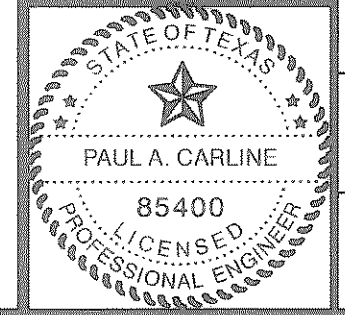
FL. 16" W.L. 590.64  
10+00

P.V.L. STA. 11+00  
FL. 16" W.L. 591.44  
11

12

13

14  
THESE DOCUMENTS ARE FOR BIDDING, CONSTRUCTION, AND PERMIT PURPOSES.  
DATE: 8/22/03



<b>CITY OF ROCKWALL, TEXAS</b>		
SPRINGER ROAD WATER LINE PLAN & PROFILE STA. 10+00 TO STA. 15+00 BIRKHOFF, HENDRICKS & CONWAY, L.L.P. CONSULTING ENGINEERS Dallas, Texas		
DESIGNED BY: P.A.C.	PROJECT: 2001-178	SHEET NO. 3
DRAWN BY: B.H.C.	DATE: AUGUST, 2003	OF 10 SHEETS