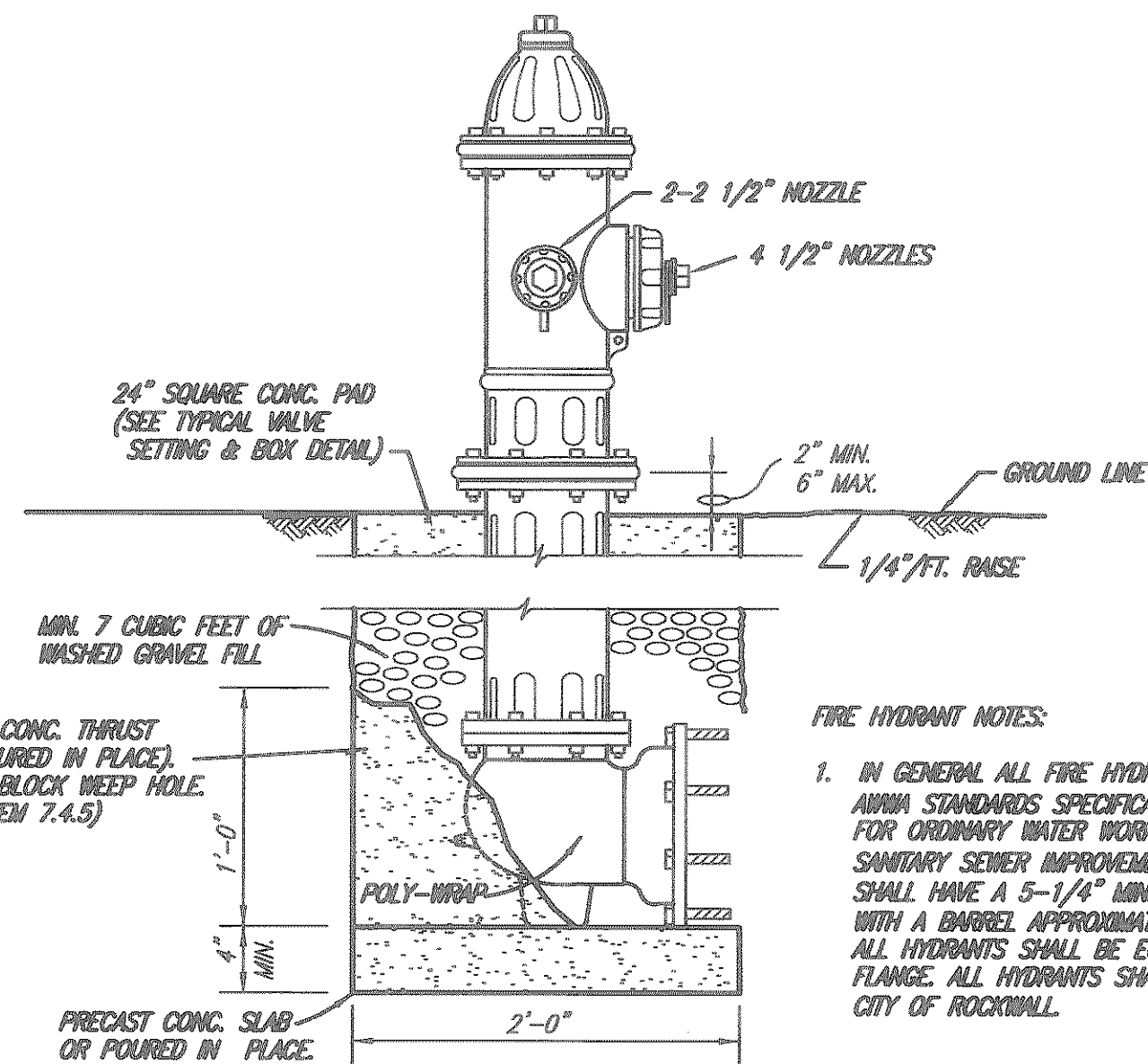
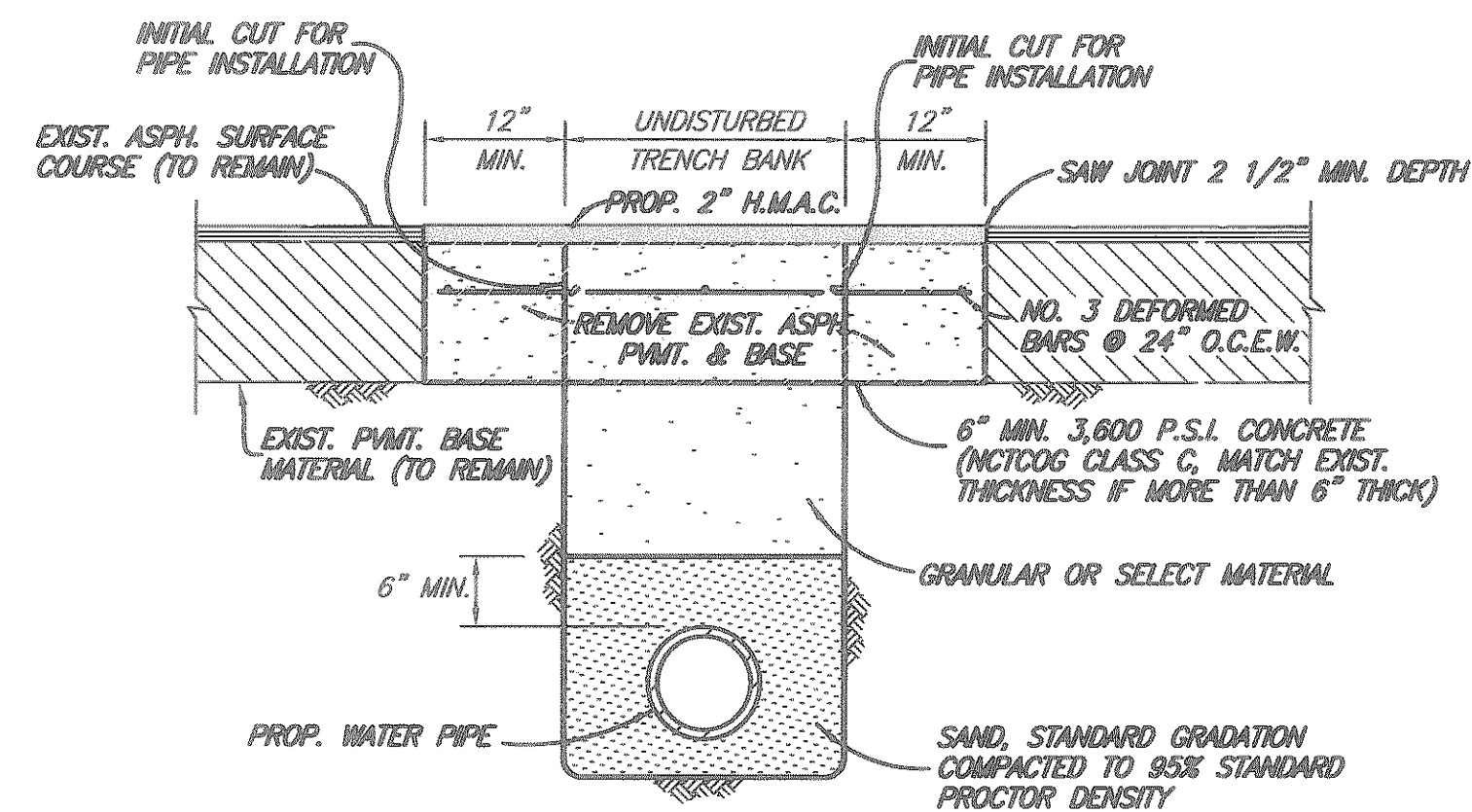


WATER LINE NOTES
(NOTES APPLY TO ALL SHEETS)

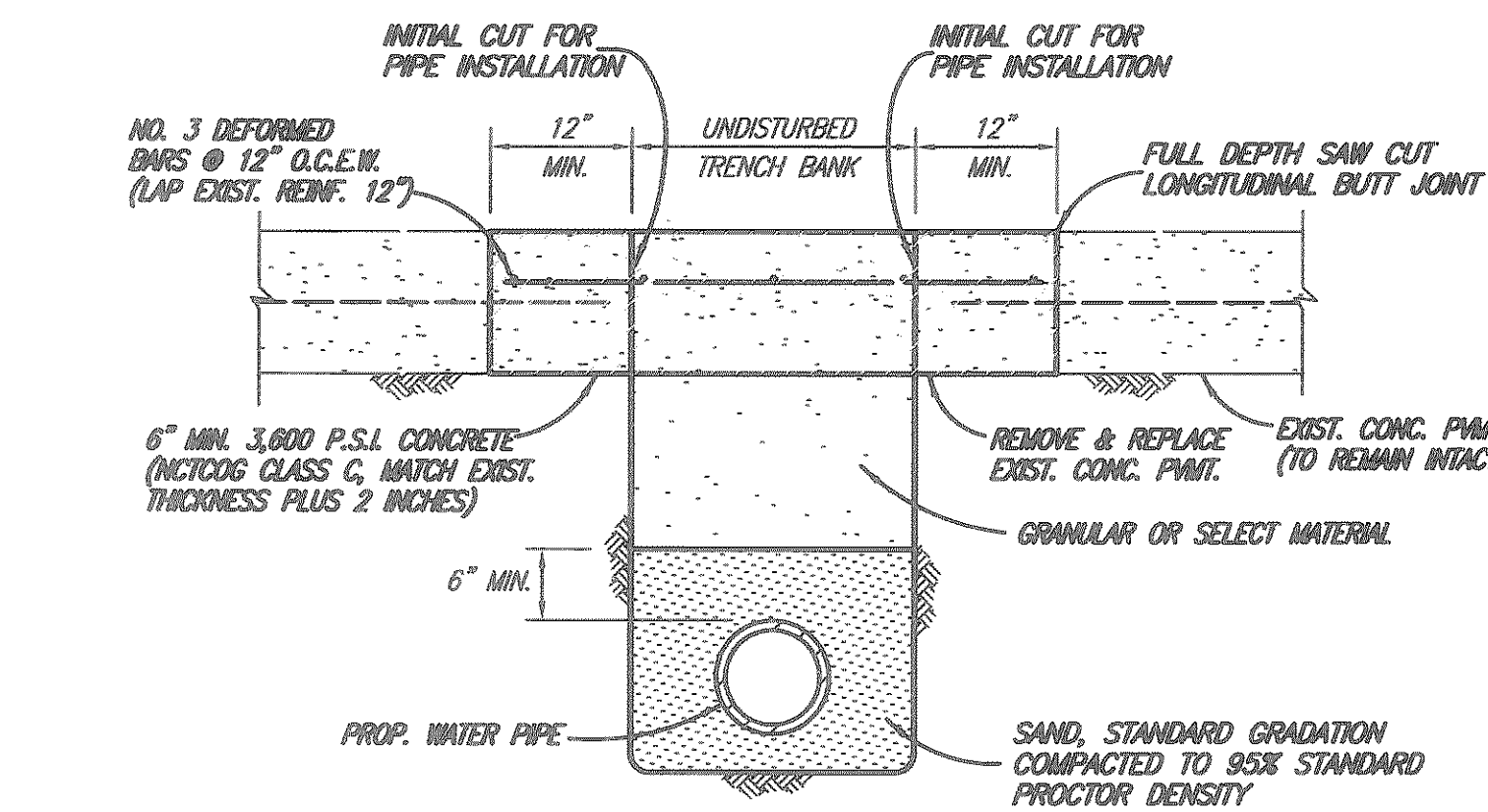
- 1) WATER LINES 6-INCHES TO 12-INCHES IN DIAMETER SHALL BE PVC AWWA C-900 DR-14.
- 2) WATER LINES 14-INCHES TO 24-INCHES IN DIAMETER SHALL BE PVC AWWA C-905 DR-18.
- 3) ALL WATER LINES HAVE A MINIMUM COVER OF 48-INCHES.
- 4) ALL TEES, BENDS, ELBOWS, PLUGS, AND OTHER FITTINGS SHALL BE RESTRAINED USING MEGA-LUGS OR APPROVED EQUAL JOINT RESTRAINT SHALL BE SUCH TO RESTRAIN TEST PRESSURES.
- 5) EXISTING UTILITIES SHOWN ON THE PLANS HAVE BEEN LOCATED FROM REFERENCE INFORMATION PROVIDED BY UTILITY COMPANIES AND FIELD SURVEYS. THE UTILITIES SHOWN MAY NOT REPRESENT ALL UTILITIES PRESENT. THE ENGINEER AND CITY OF ROCKWALL DO NOT ACCEPT RESPONSIBILITY FOR THE UTILITY LOCATIONS SHOWN. THE CONTRACTOR SHALL VERIFY UTILITY LOCATIONS BOTH HORIZONTALLY AND VERTICALLY PRIOR TO CONSTRUCTION AND SHALL TAKE NECESSARY PRECAUTIONS TO PROTECT ALL UTILITIES ENCOUNTERED. THE CONTRACTOR SHALL PRESERVE AND PROTECT ALL EXISTING UTILITIES FROM DAMAGE AND SHALL REPAIR ANY UTILITIES DAMAGED BY THEIR OPERATIONS AT THEIR EXPENSE. CONTRACTOR SHALL NOTIFY ENGINEER OF ANY CONFLICTS WITH UTILITIES.
- 6) ALL WORK SHALL COMPLY WITH APPLICABLE CODES, REGULATIONS, AND STANDARDS IMPOSED BY UTILITY COMPANIES AND THE CITY OF ROCKWALL.
- 7) CONTRACTOR SHALL FURNISH AND INSTALL BLUE E.M.T. MARKER PADS AT ALL BENDS, VALVES, CHANGES IN HORIZONTAL ALIGNMENT, AND EVERY 250-FEET ALONG THE LENGTH OF THE WATER LINE AS SHOWN IN THE CITY OF ROCKWALL STANDARD DETAILS. PAYMENT FOR FURNISHING AND INSTALLING THE E.M.T. MARKER PADS SHALL BE SUBSIDIARY TO WATER LINE INSTALLATION.



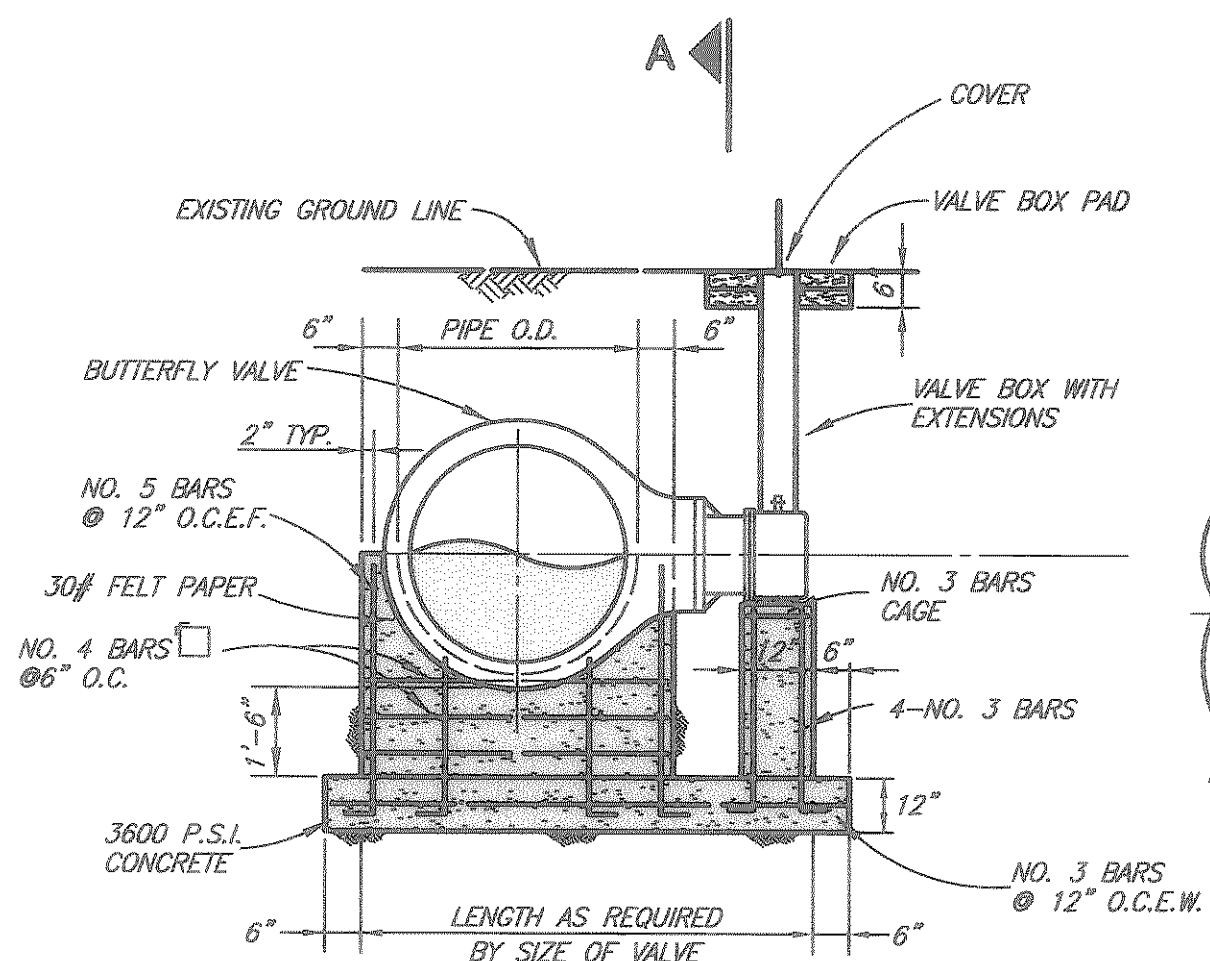
- FIRE HYDRANT NOTES:**
1. IN GENERAL, ALL FIRE HYDRANTS SHALL CONFORM TO AWWA STANDARDS SPECIFICATIONS FOR FIRE HYDRANTS FOR ORDINARY WATER WORKS SERVICE FOR WATER AND SANITARY SEWER IMPROVEMENTS. FIRE HYDRANTS SHALL HAVE A 5-1/4" MINIMUM VALVE OPERATING AND WITH A BARREL APPROXIMATELY 7" INSIDE DIAMETER. ALL HYDRANTS SHALL BE EQUIPPED WITH A BREAKAWAY FLANGE. ALL HYDRANTS SHALL BE APPROVED BY THE CITY OF ROCKWALL.



ASPHALT STREET OR DRIVEWAY REPAIR

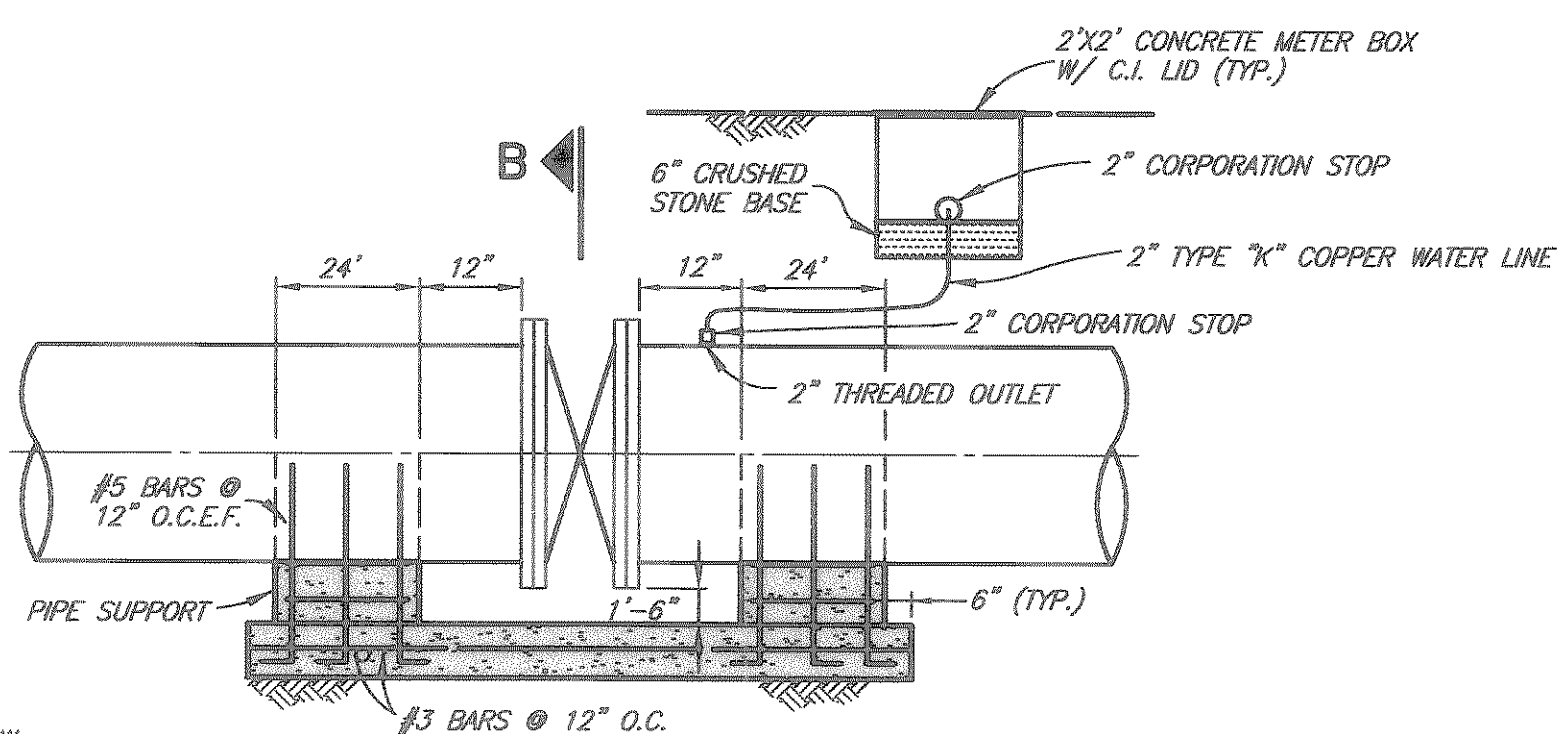


CONCRETE STREET OR DRIVEWAY REPAIR

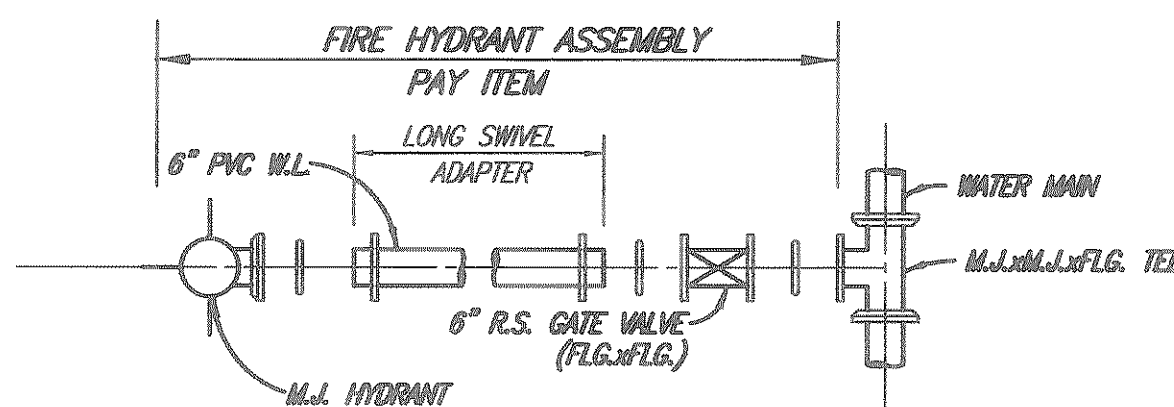


SECTION B-B

BUTTERFLY VALVE INSTALLATION

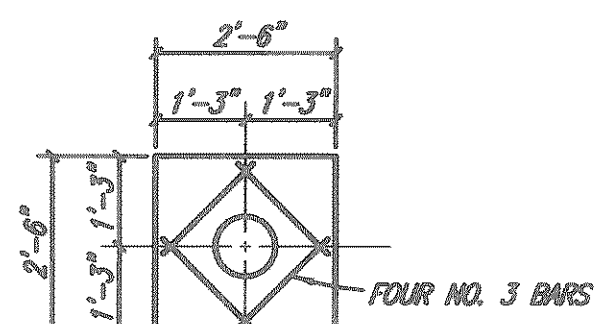


SECTION A-A



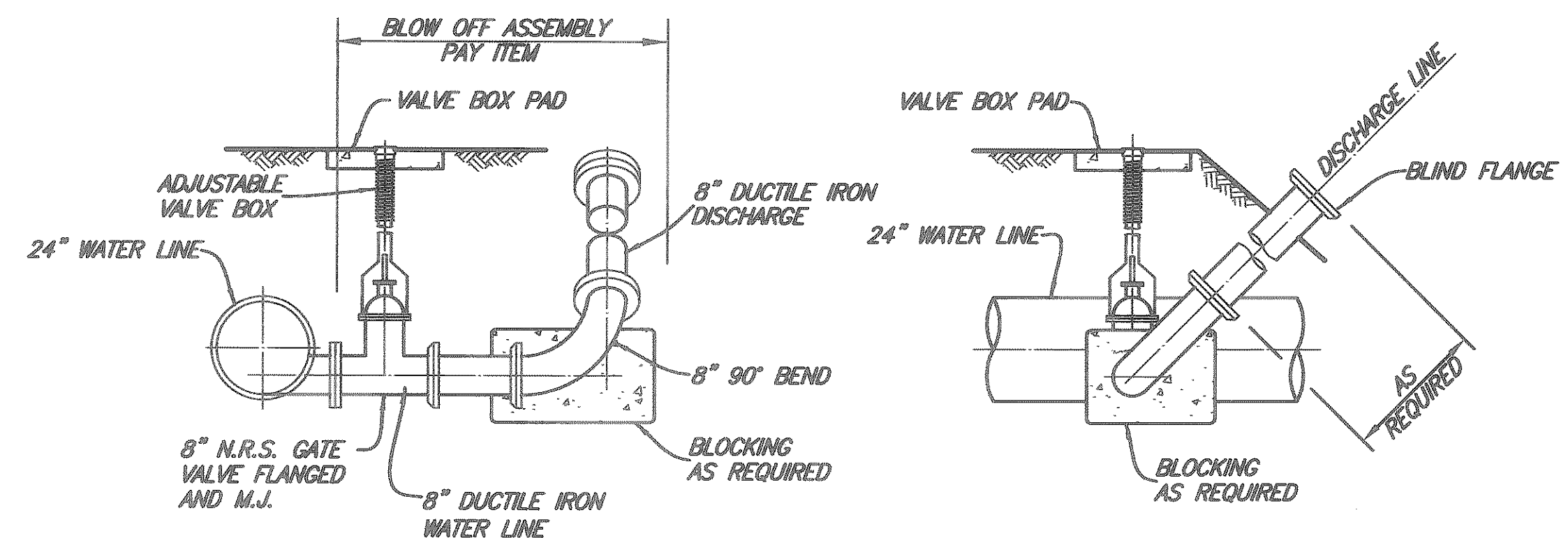
FIRE HYDRANT ASSEMBLY

NO SCALE



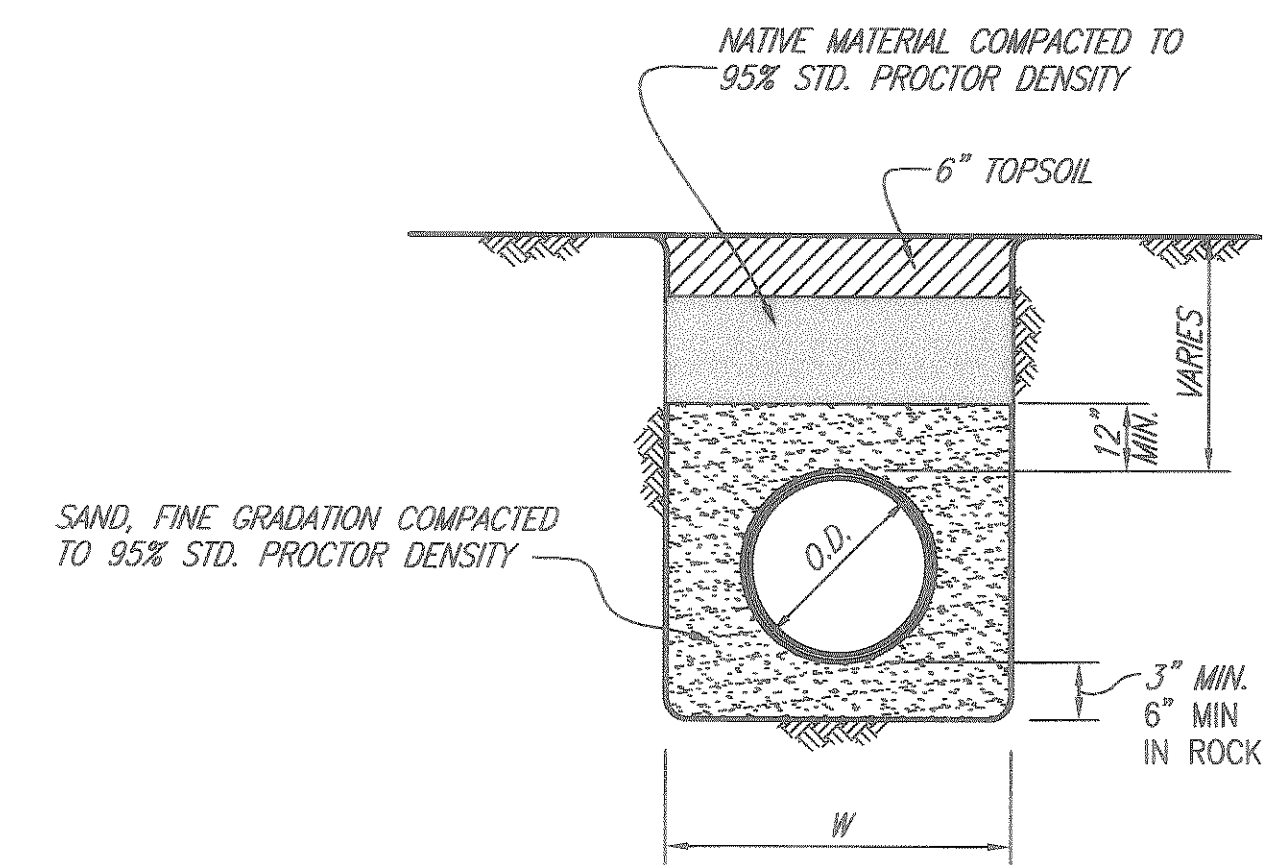
VALVE BOX PAD PLAN

NO SCALE

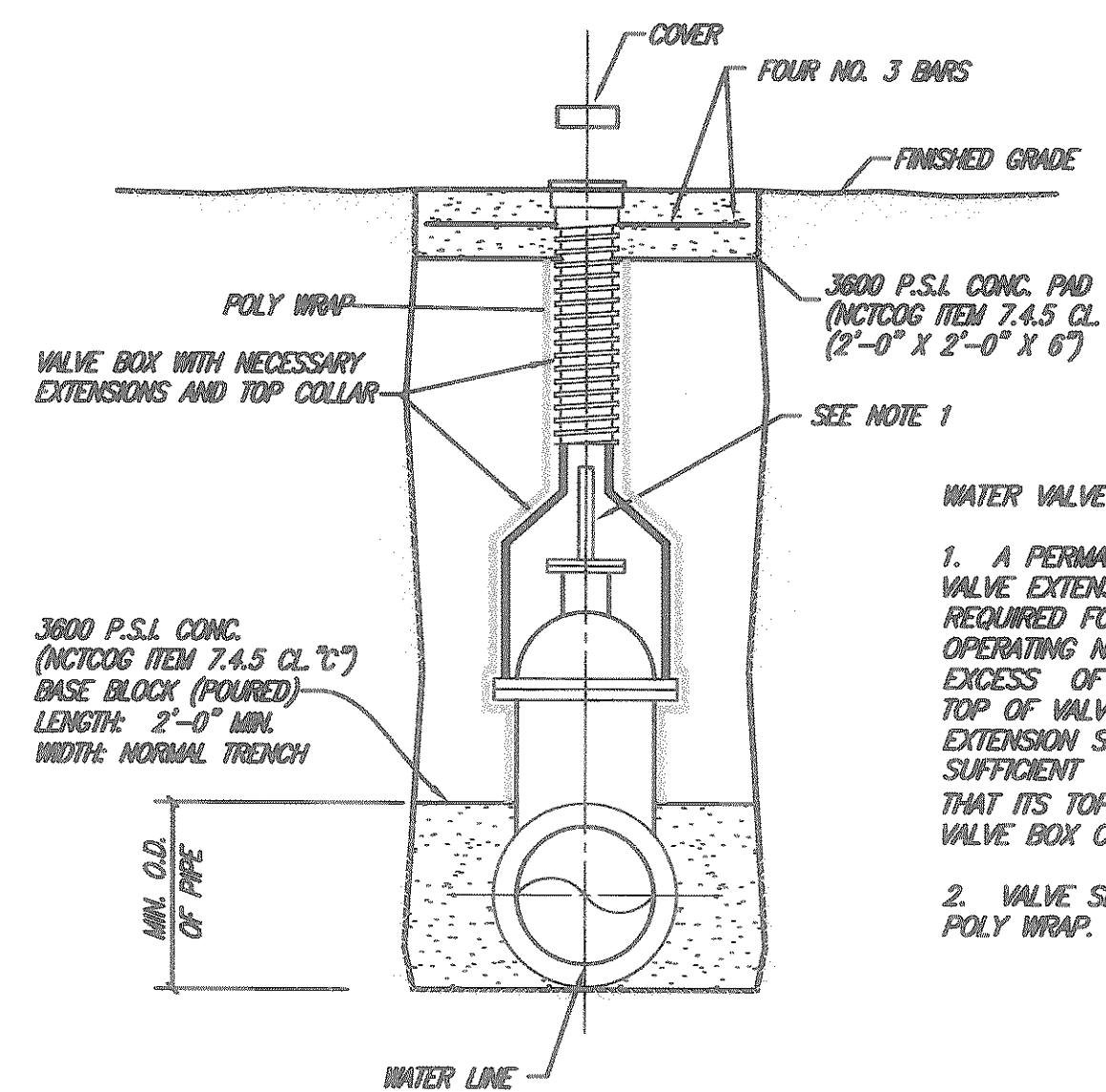


BLOW OFF VALVE ASSEMBLY

These plans and related specifications were prepared for construction of this specific project only. Reuse of these documents is not permitted without written authorization of Birkhoff, Hendricks & Conway, L.L.P.



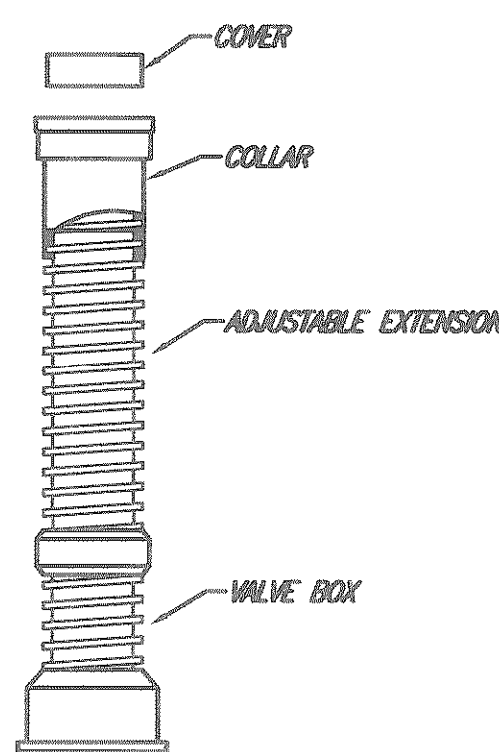
CLASS B-3 EMBEDMENT



GATE VALVE SETTING & BOX

NO SCALE

- WATER VALVE NOTES:**
1. A PERMANENTLY ATTACHED VALVE EXTENSION STEM SHALL BE REQUIRED FOR ANY VALVE WHOSE OPERATING NUT IS LOCATED IN EXCESS OF 4 FEET BELOW THE TOP OF VALVE BOX. THIS EXTENSION SHALL BE OF SUFFICIENT LENGTH TO INSURE THAT ITS TOP IS WITHIN 4" OF THE VALVE BOX COVER.
 2. VALVE SHALL BE WRAPPED IN POLY WRAP.



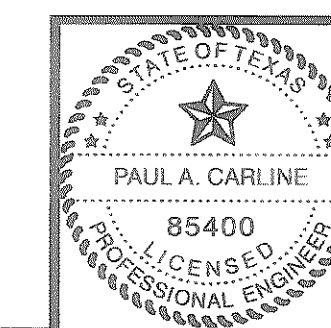
VALVE BOX WITH EXTENSION

NO SCALE

REVISED TO CONFORM TO CONSTRUCTION RECORDS BY P.A.C. DATE 01/18/2005

THESE DOCUMENTS ARE FOR BIDDING, CONSTRUCTION, AND PERMIT PURPOSES.

DATE: 6/22/03



CITY OF ROCKWALL, TEXAS
SPRINGER ROAD WATER LINE
NOTES AND DETAILS

BIRKHOFF, HENDRICKS & CONWAY, L.L.P.
CONSULTING ENGINEERS
Dallas, Texas

DESIGNED BY: P.A.C. PROJECT: 2001-178 SHEET NO. 10
DRAWN BY: J.L.C. DATE: JULY, 2003 OF 10 SHEETS