

Lot 15 Block A
Rockwall Towne Centre Phase III
Cab. B, Pg. 395

PAV. STA. 0+00=
Q I-30 SERVICE ROAD
BEGIN TRANSITION
N 7016112.86
E 2593336.31

INSTALL: 40 L.F.
24" RCP-GRADE
TO FLOWLINES

N 7016138.42
E 2593369.08

EXIST.
5' X 2' RCB

- NOTES:
- GUY WIRE TO BE RELOCATED BY TEXAS POWER AND LIGHT.
 - FIRE HYDRANT TO BE RELOCATED BY OTHERS.

PAV. STA. 0+35.0 - 25' RT.
CONST. TYPE 'S' HDWL.
BEGIN 18" RCP
N 7016150.11
E 2593357.95

L.P. PAV. STA. 0+90.5
GRADE INLET: TOP=542.49
N 7016166.95
E 2593360.18

PI PAV. STA. 0+66.14=
STA. 0+66.14 - 18" RCP
N 7016177.78
E 2593348.91

CONST. TYPE 'S' HDWL.
END 24" RCP
N 7016136.67
E 2593320.99

GRATE DETAIL E
10

SIDWALK DETAIL C
10

CONST. 4" M.H.
TOP = 546.5
N 7016334.59
E 2593052.97

40 L.F. -
12" PVC
@ 4.0%

PAV. STA. 3+41.50
12" X 60" BEND
N 7016368.56
E 2593150.32

PAV. STA. 2+00.00
GRADE INLET: TOP=543.19
N 7016177.78
E 2593348.91

PAV. STA. 3+00.00
GRADE INLET: TOP=543.90
N 7016177.78
E 2593348.91

PAV. STA. 3+77.00
GRADE INLET: TOP=543.90
N 7016177.78
E 2593348.91

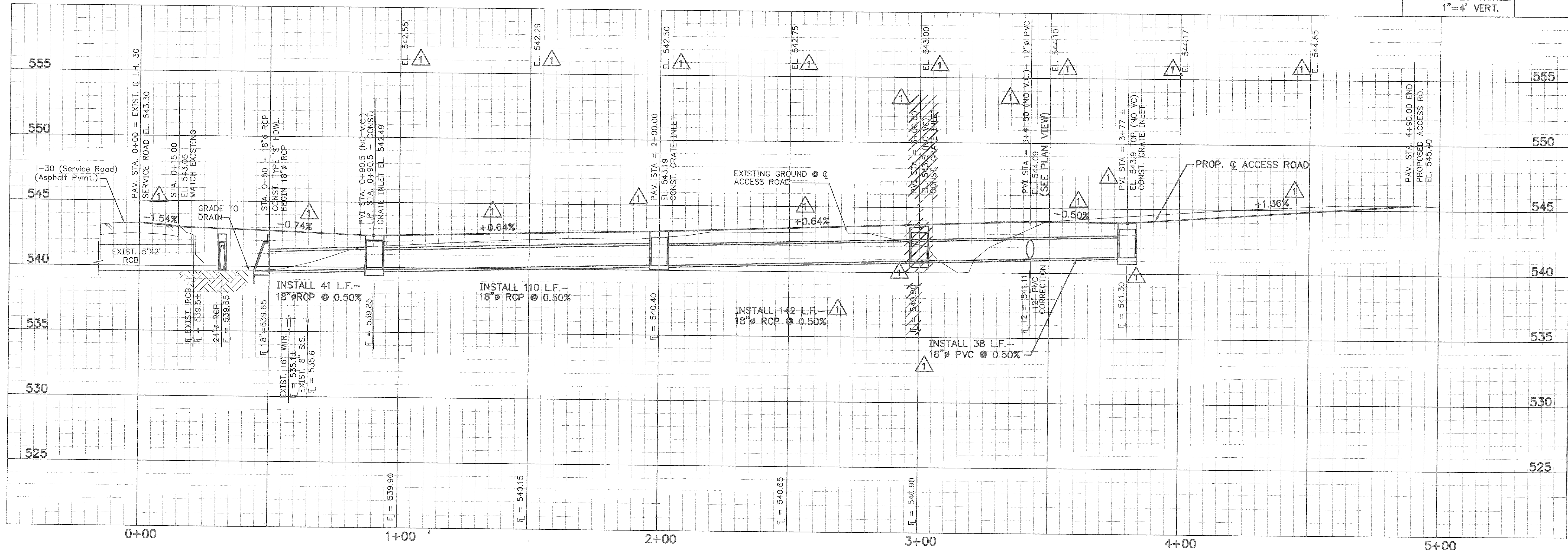
Note: This Drawing is on City of Rockwall Coordinate System. Drawing is on Grid Coords. (State Plane NAD 83 Datum)

Note: The Basis of Bearings is On The City of Rockwall G.P.S. System (State Plane NAD 83 Datum)

B.M. = NGS-1948.
Elev = 544.86

THESE DOCUMENTS HAVE BEEN PREPARED BASED ON INFORMATION PROVIDED BY OTHERS. THE ACCURACY AND/OR COMPLETENESS OF THIS INFORMATION WAS VERIFIED BY THE CONTRACTOR.

SCALE: 1"=20' HORIZ.
1"=4' VERT.

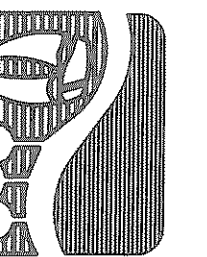


No.	Date	Revisions	PSY	App.
1	3-3-94	ADDENDUM NO. 1		

Chiang, Patel and Associates, Inc.
Consulting Engineers • Planners • Project Managers
Dallas, Texas

RECORD DRAWING
PHILIP S. YERBY, P.E. #51735
CHIANG, PATEL & YERBY, INC.

CITY OF ROCKWALL
"THE NEW HORIZON"



CITY OF ROCKWALL
SOUTHSIDE ELEVATED
STORAGE TANK
**PAVING AND DRAINAGE
PLAN AND PROFILE**

Scale: AS NOTED Date: FEB. 1994
Designed by: R. O'CONNELL
Drawn by: R. TUNNELL
Checked by: P. YERBY
Approved by: F. RASOR
Project No. CR-9357.20

SHEET
5
OF 14