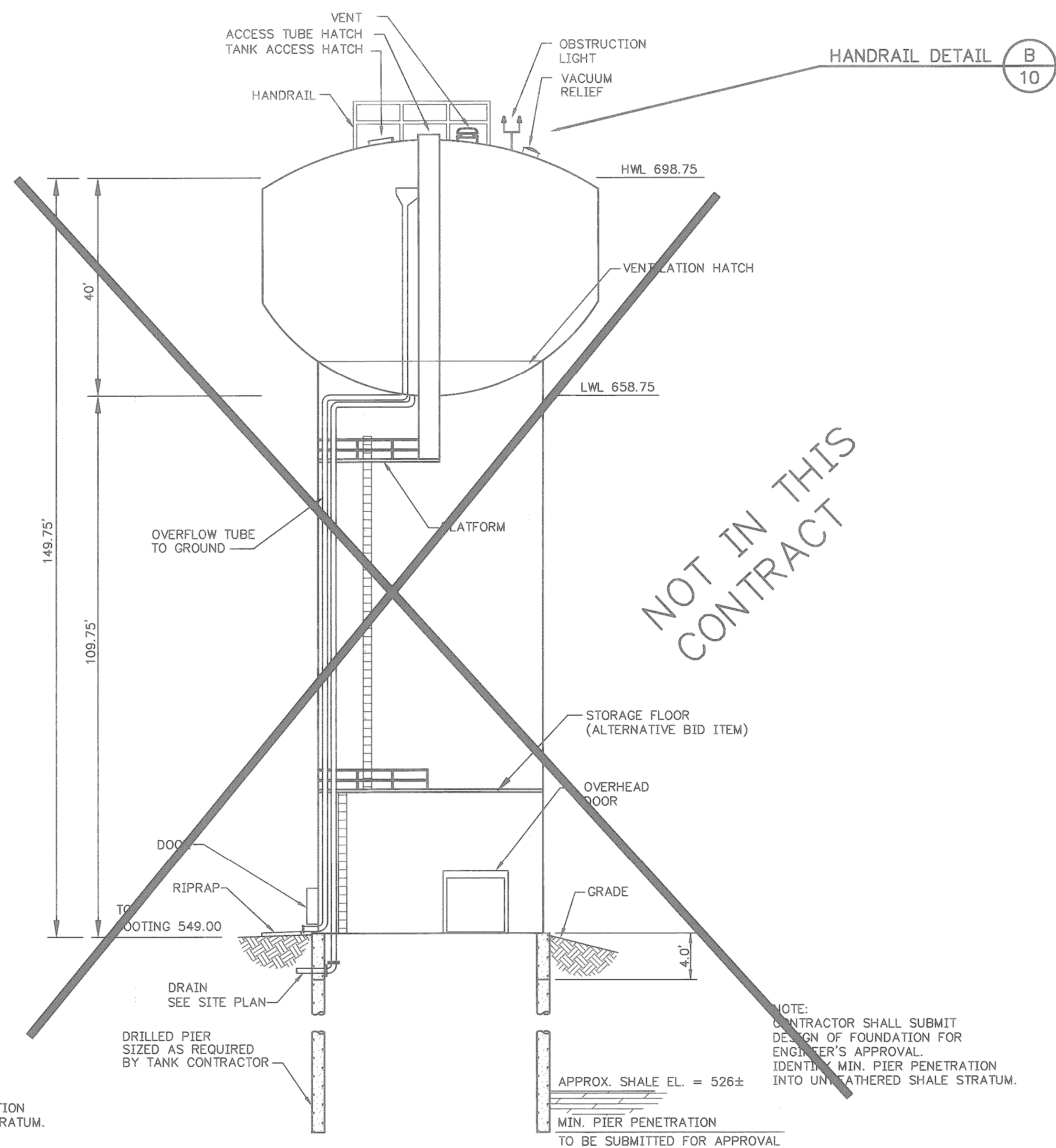


COMPOSITE CONSTRUCTION TANK AND PEDESTAL
SCALE: NTS



ALL STEEL CONSTRUCTION TANK AND PEDESTAL
SCALE: NTS

NOTES: APPLICABLE TO BOTH ALTERNATIVES

GENERAL:

- 1 - SEE CONTRACT SPECIFICATIONS FOR DESIGN CRITERIA AND DETAILS. APPLICABLE ELEVATED TANK SPECIFICATIONS ARE AWWA D100-84 AND ACI 318-89.
- 2 - STEEL TANK FLOOR WITHIN THE PERIMETER OF THE CONCRETE SUPPORT PEDESTAL MAY BE EITHER STEEL PLATE SUPPORTED BY STRUCTURAL CONCRETE OR SELF SUPPORTING STEEL. CONDENSATE CEILING REQUIRED FOR TANKS.
- 3 - PROVIDE ADEQUATE FREEBOARD TO INSURE ROOF PROJECTIONS AND PAINTER'S RAIL REMAIN ABOVE THE HIGH WATER LEVEL.
- 4 - CONCRETE PEDESTAL SHALL INCORPORATE HORIZONTAL AND VERTICAL RELIEF FEATURES ON EXTERIOR TO PRODUCE A SYMMETRICAL PATTERN.
- 5 - SEE CONTRACT SPECIFICATIONS FOR STEEL TANK COATING SPECIFICATIONS.
- 6 - TANK APPURTENANCES ARE ROTATED FOR CLARITY.

FOUNDATION:

- 1 - REFER TO THE GEOTECHNICAL REPORT FOR RECOMMENDATIONS REGARDING ALLOWABLE BEARING CAPACITY. (SAFETY FACTORS PER AWWA D100-84)
- 2 - DESIGN DRILLED PIER FOUNDATION SYSTEM PER GEOTECHNICAL REPORT RECOMMENDATIONS AND MAXIMUM APPLICABLE DESIGN LOADS IN ACCORDANCE WITH AWWA D100-84.
- 3 - CONCRETE FOUNDATION DESIGN IN ACCORDANCE WITH ACI 318-89.

MECHANICAL:

RISER AND OVERFLOW PIPING WITHIN THE PEDESTAL SHALL COMPLY WITH REQUIREMENTS OF DIVISION 15. PROVIDE ISOLATION BOLT KIT AT MATERIAL CHANGE. PROVIDE HANGERS, BRACKETS, AND THRUST RESTRAINT AS REQUIRED. OVERFLOW SYSTEM SHALL BE DESIGNED TO ACCOMMODATE MAXIMUM FILL RATE. SEE CONTRACT SPECIFICATION. REMOVABLE SILT STOP SHALL BE MINIMUM 6 INCHES ABOVE TANK FLOOR.

MISCELLANEOUS IRON:

ALL LADDERS AND LANDINGS SHALL BE GALVANIZED. PROVIDE ALUMINUM SAFETY RAILS ON ALL LADDERS. ROOF AND TANK ACCESS SHALL BE 42" DIA. A REMOVABLE ALUMINUM PAINTER'S LOUVER SHALL BE INSTALLED AT THE UPPER LANDING FOR ACCESS TO THE EXTERIOR PAINTER'S RAIL.

STORAGE FLOOR - ALTERNATIVE BID ITEM

STORAGE FLOOR SHALL BE DESIGNED FOR 125 PSF LIVE LOAD. A 48"x48" ALUMINUM HATCH, WITH REMOVABLE GALVANIZED HANDRAIL, SHALL BE PROVIDED IN THE STORAGE FLOOR OVER THE TRUCK DOOR ENTRANCE. INSTALL A 12' LONG 1000 LB CAPACITY JIB CRANE/HOIST ON THE INTERIOR PEDESTAL WALL ABOVE STORAGE FLOOR HATCH. STORAGE FLOOR SHALL BE A CLEAR SPAN, NO COLUMNS WILL BE ALLOWED IN THE PEDESTAL.

TANK LIGHTING - ALTERNATIVE BID ITEM

IN ADDITION TO THE SPECIFIED LIGHTING, THE CONTRACTOR SHALL SUBMIT FOR THE ENGINEERS REVIEW AN OPTION TO PROVIDE CHRISTMAS LIGHTING OF THE TOWER. THE LIGHTING SHOULD BE PLACED SO AS TO BE SEEN FROM TWO DIRECTIONS.

NOT IN THIS CONTRACT

THESE DOCUMENTS HAVE BEEN PREPARED BASED ON INFORMATION PROVIDED BY OTHERS. THE ACCURACY AND/OR COMPLETENESS OF THIS INFORMATION WAS VERIFIED BY THE CONTRACTOR.

No.	Date	Revisions	App.

Chiang, Patel and Associates, Inc.
Consulting Engineers • Planners • Project Managers
Dallas, Texas

RECORD DRAWING
PHILIP S. YERBY, P.E. #51735
CHIANG, PATEL & YERBY, INC.

CITY OF ROCKWALL
"THE NEW HORIZON"

CITY OF ROCKWALL
SOUTHSIDE ELEVATED
STORAGE TANK
**ELEVATED TANK
ALTERNATIVES**

Scale: AS NOTED	Date: FEB. 1994
Designed by: R. O'CONNELL	Drawn by: R. TUNNELL
Checked by: P. YERBY	Approved by: F. RASOR
Project No. CRG 9357.20	

I:\CRO09357\7-96\93575405 Mon Aug 05 09:42:55 1996

02/25/94 09:57:00 02/25/94