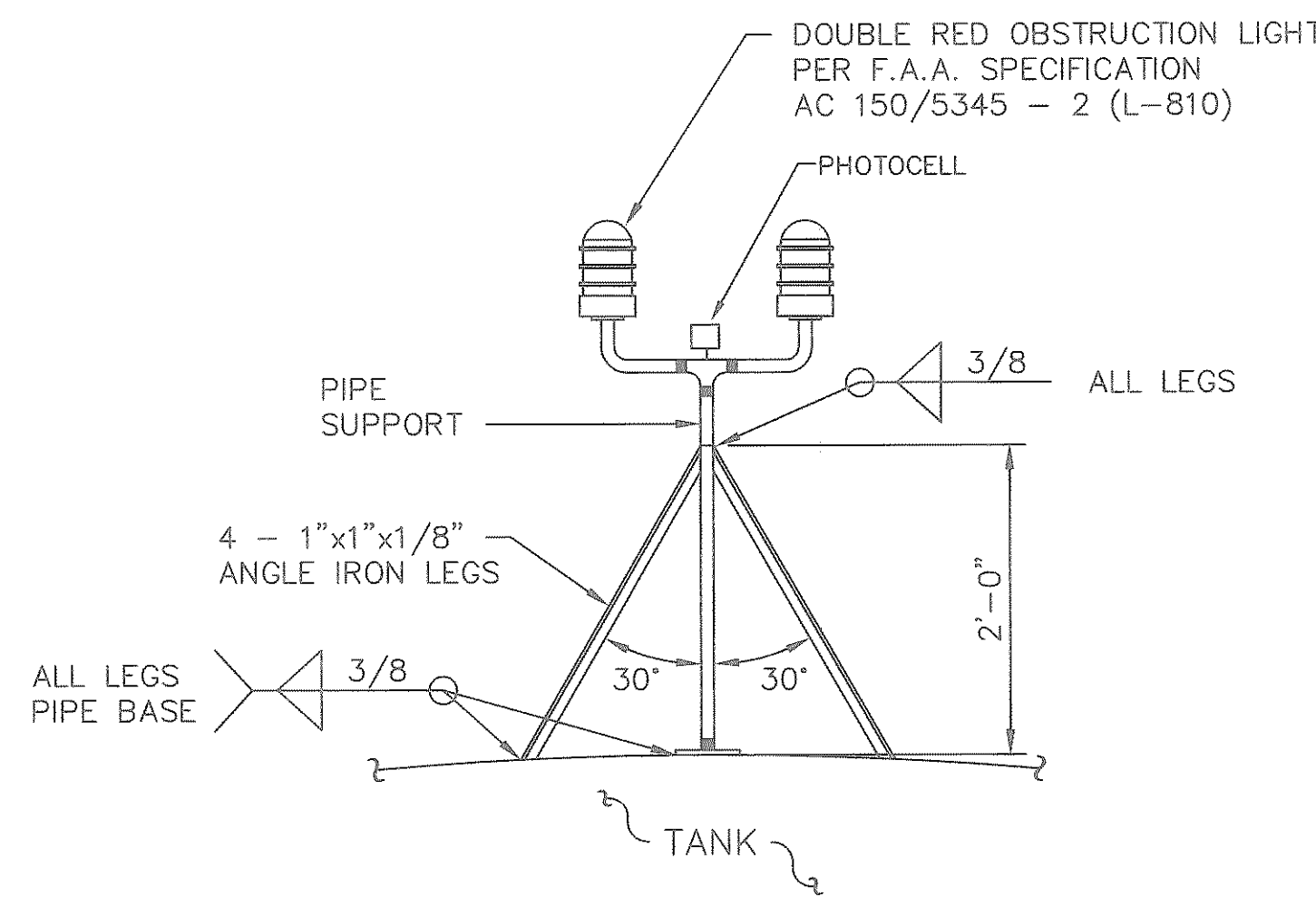
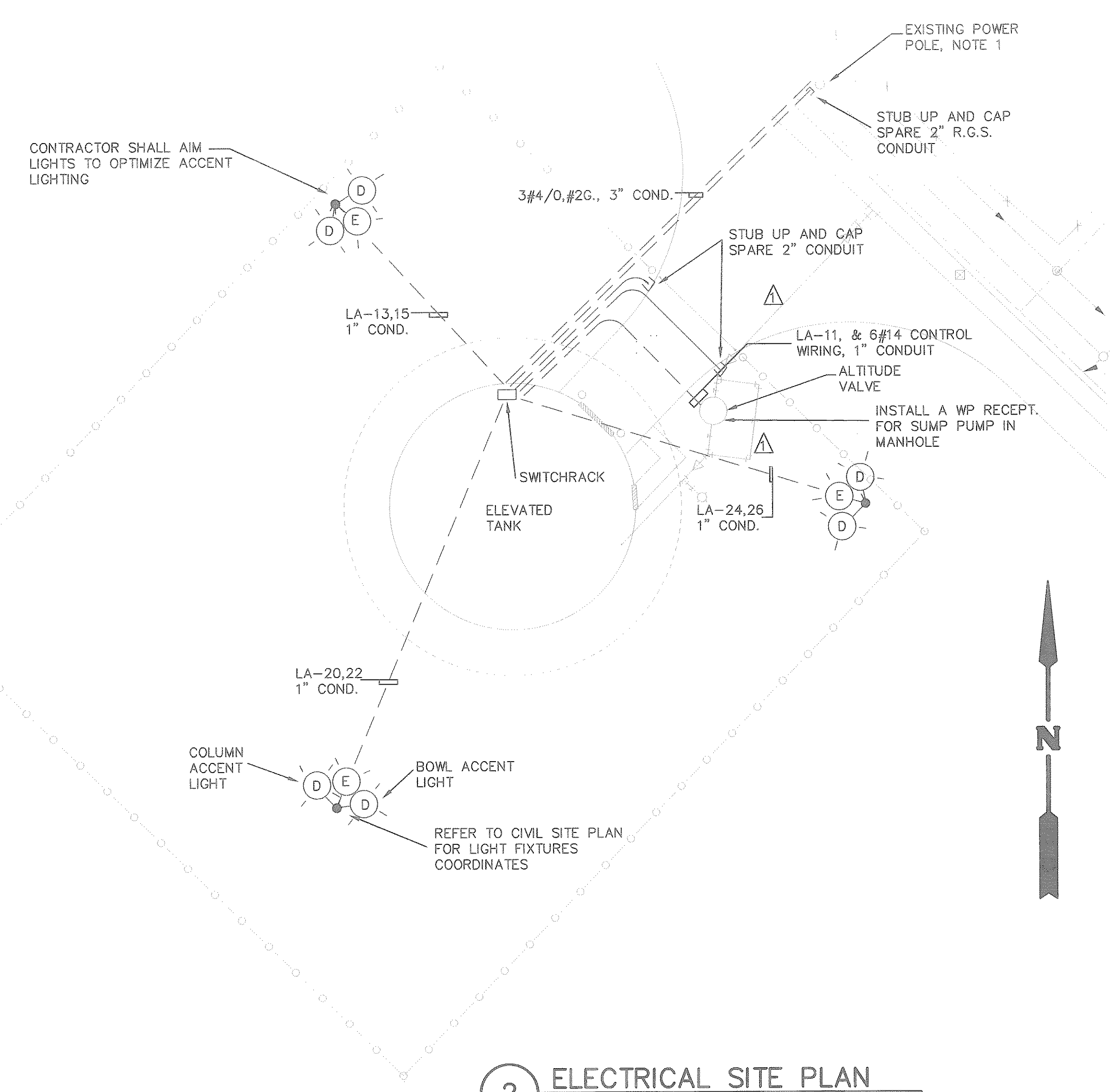


1 TANK WIRING DIAGRAM
SCALE: N.T.S.

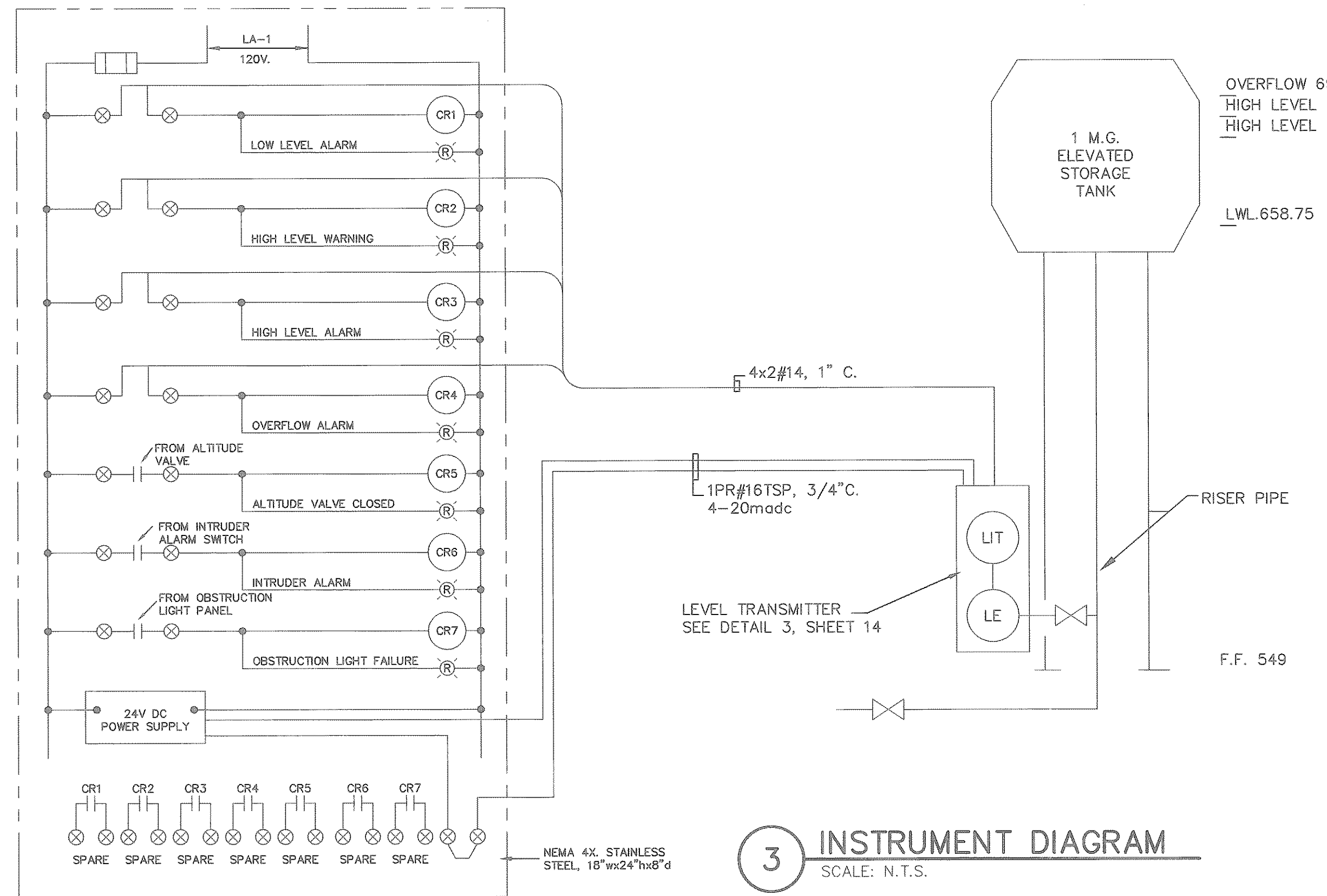
ITEM	MANUFACTURER	DESCRIPTION	SPARE LAMPS	SPARE FIXTURES	SPARE BALLASTS
A	SPERO 2290-CB3CG	120V, 150W, INCANDESCENT LAMP, ENCLOSED AND GASKETED FIXTURE WITH GUARD. 3/4" HUB.	4	1	0
B	SPERO CFC-150-HPF-PC-B-PPS	120V, 1-150W. HIGH PRESSURE SODIUM FLOOD LIGHTS WITH PHOTOCELL AND PROTECTIVE PLASTIC SHIELD, DARK BRONZE FINISH. HPF BALLAST. PHOTOCELL REQ'D ON OUTSIDE FIXTURES ONLY.	3	0	0
C	SPERO AU3-50-PC	120V, 1-50W HIGH PRESSURE SODIUM LAMP, DOOR MOUNT, DARK BRONZE FINISH WITH PHOTOCELL.	1	0	0
D	NORTH STAR SB-821H-240-HD-UP-LS HHD-30-LW-33,P-00,BPC,SMB-3	120V, 1000W METAL HALIDE FLOOD LIGHT, NEMA 4, CAST HULL, AIMING ABOVE HORIZONTAL, LAMP SUPPORT MOUNT A SQUARE STEEL POLE, PAINTED DARK BROWN, WINCH, MOUNT TO "E" FIXTURE AND ONE "F" FIXTURE PER POLE.	4	0	0
E	NORTH STAR SB-541H-240H-HD-UP-LS	120V, 400W METAL HALIDE FLOOD LIGHT, NEMA 4, CAST HULL, AIMING ABOVE HORIZONTAL, LAMP SUPPORT	4	0	0
F	CROUSE HINDS VAW-43961 PECA-51711 TLR-43902	120V, INCANDESCENT OBSTRUCTION LIGHT FIXTURE WITH RED GLOBE, PHOTOCELL, TRANSFER RELAY, LIGHTNING TERMINAL, AND MOUNTING ACCESSORIES, BRACE FOR 130 MPH WIND GUSTS MOUNT RELAY PANEL ON SWITCHRACK AT BASE OF TANK, WITH FAILURE CONTACTS FOR REMOTE MONITORING.	4	1	0
G	GALAXY PIR-GO	120V, 1-300W QUATRZ LIGHT, DARK BRONZE FINISH, MOTION CONTROLLED LIGHT, TIME SETABLE	2	0	0



4 OBSTRUCTION LIGHT DETAIL
SCALE: N.T.S.



2 ELECTRICAL SITE PLAN
SCALE: 1" = 20'-0"



3 INSTRUMENT DIAGRAM
SCALE: N.T.S.

POWER PANEL SHALL BE WESTINGHOUSE, POWER-R-LINE 3, COPPER BUSSING, NEMA 3R

200A/2P MAIN BREAKER			240/120V, 1Ø, 3W, 3Ø CIRCUIT, 18,000 RMS		
LOAD SERVED	BRKR	CKT	CKT	BRKR	LOAD SERVED
UPS	20/1	1	2	20/1	OBSTRUCTION LIGHTS
CATHODIC PROTECTION PANEL	20/1	3	4	20/1	SWITCHRACK RECEPT/LIGHT
HEAT TRACE	20/1	5	6	20/1	OUTDOOR LIGHTS
TANK LIGHTS, INTERIOR	20/1	7	8	20/1	TANK RECEPTACLES
LADDER LIGHTS	20/1	9	10	20/1	SPARE
ALTITUDE VALVE SUMP	20/1	11	12	30/2	BRIDGE CRANE
SITE LIGHTING, POLE 1	20/1	13	14		
SITE LIGHTING, POLE 1	20/1	15	16	30/2	FUTURE MOTORIZED GATE
HEATER NO. 1	30/2	17	18	30/1	
		19	20	20/1	SITE LIGHTING, POLE 2
HEATER NO. 2	30/2	21	22	20/1	SITE LIGHTING, POLE 2
		23	24	20/1	SITE LIGHTING, POLE 3
SPARE	20/1	25	26	20/1	SITE LIGHTING, POLE 3
SPARE	20/1	27	28	20/1	SPARE
SPARE	20/1	29	30	30/2	SPARE

NEUTRAL

GROUND

- NOTES:
- IT SHALL BE THE CONTRACTOR'S RESPONSIBILITY TO CONTACT AND CO-ORDINATE WITH THE POWER COMPANY IMMEDIATELY UPON NOTICE TO PROCEED WITH CONSTRUCTION. CONTRACTOR SHALL INSTALL CONDUITS, POLE, METER BASE AND ALL OTHER ACCESSORIES REQUIRED BY THE POWER COMPANY SPECIFICATIONS. AS PART OF THIS CONTRACT THE CONTRACTOR SHALL ALSO INSTALL POLE RISER CONDUITS, POT HEADS AND ACCESSORIES FOR POWER SERVICE. ALL SUCH INTERFACE WORK SHALL BE AT NO EXTRA COST TO OWNER.
 - ALL EXPOSED CONDUIT AND FITTINGS SHALL BE ALUMINUM WITH EXPANSION COUPLINGS EVERY 40' LENGTH OF CONDUIT RUN. ALL UNDERGROUND CONDUITS SHALL BE PVC SCHEDULE 40 CONCRETE ENCASUREMENT EXCEPT TELEPHONE CONDUIT SHALL BE RIGID GALVANIZED STEEL.
 - ALL ELECTRICAL WORK SHALL BE DONE IN STRICT COMPLIANCE WITH THE LATEST NATIONAL ELECTRICAL CODE AND ALL APPLICABLE STATE AND LOCAL CODES. ALL WORK SHALL BE PERFORMED BY A LICENSED ELECTRICIAN. REGULARLY ENGAGED IN SUCH A TRADE.
 - ALL PROPOSED ELECTRICAL DEVICES AND EQUIPMENT SHALL BE NEW AND SHALL BE UL LISTED AND APPROVED. ALL EQUIPMENT SHALL BE GROUNDED PER NEC REQUIREMENTS.
 - ALL CONDUITS, CONDUCTORS, CONDULETS, JUNCTION BOXES, ETC. SHALL BE SIZED AND INSTALLED PER LATEST NATIONAL ELECTRICAL CODE.
 - ALL CONDUCTORS SHALL BE THHN/THWN COPPER STRANDED SUITABLE FOR INSTALLATIONS WET AND DRY LOCATIONS. CONDUCTORS SHALL BE A MINIMUM OF NO. 12 AWG. CONTROL CONDUCTORS SHALL BE MINIMUM OF NO. 14 AWG. SIGNAL CONDUCTORS FOR 4-20MA ANALOG CONTROL AND INDICATION SIGNAL SHALL BE TWISTED SHIELDED PAIR CABLES NO. 16 AWG, WITH THE SHIELD GROUNDED AT THE FIELD INSTRUMENT END ONLY. INSTALLED PER ISA AND IEEE STANDARDS. SIGNAL WIRING SHALL BE INSTALLED IN SEPERATE CONDUITS FROM POWER WIRING. ALL CONDUCTORS SHALL BE TAGGED AT ALL TERMINATION POINTS WITH HEAT SHRINK WIRE MARKERS. ALL CONDUCTORS SHALL BE TESTED FOR CONTINUITY AFTER INSTALLATION. SPLICES SHALL NOT BE ACCEPTABLE, EXCEPT IN LIGHTING CIRCUITS.
 - ALL JUNCTION BOXES, CONTROL STATIONS, INSTRUMENT PANELS AND LOCAL CONTROL PANELS SHALL BE NEMA 4X 316 STAINLESS STEEL.
 - TERMINAL BLOCKS SHALL BE INDUSTRIAL GRADE, 300 VOLT RATED, WITH SCREW CLAMP COMPRESSION AND DEAD FRONT BARRIERS. TERMINAL BLOCKS SHALL BE PROVIDED FOR ALL CONTROL CIRCUITS ENTERING OF LEAVING CONTROL PANEL OR EQUIPMENT.
 - ALL LIGHT SWITCHES SHALL BE NEMA 7D. ALL REPECTACLES EXCEPT WHERE SHOWN ON PLANS SHALL BE WP/GFI.

THESE DOCUMENTS HAVE BEEN PREPARED BASED ON INFORMATION PROVIDED BY OTHERS. THE ACCURACY AND/OR COMPLETENESS OF THIS INFORMATION WAS VERIFIED BY THE CONTRACTOR.

App.	
Revisions	
Date	
No.	

Chiang, Patel and Associates, Inc.
Consulting Engineers • Planners • Project Managers
Dallas, Texas

RECORD DRAWING
P.K. PATEL, P.E. #44712
CHIANG, PATEL & YERBY, INC.

CITY OF ROCKWALL
"THE NEW HORIZON"

ELECTRICAL SITE PLAN AND ONELINE

CITY OF ROCKWALL
SOUTHSIDE ELEVATED STORAGE TANK

Scale: AS SHOWN Date: FEB. 1994
Designed by: P.N. MOSELEY
Drawn by: T.G. GRANT
Checked by: P.N. MOSELEY
Approved by: P.K. PATEL
Project No.: CR0 9357-20

SHEET
12
OF 14