

P.I. STA. 35+90.91 LINE 'C'
 $\Delta = 45^{\circ}00'00''$ LT.
 INSTALL:
 1-10" 45° BEND
 CONCRETE BLOCKING
 N 7013997.0572
 E 2589957.8716

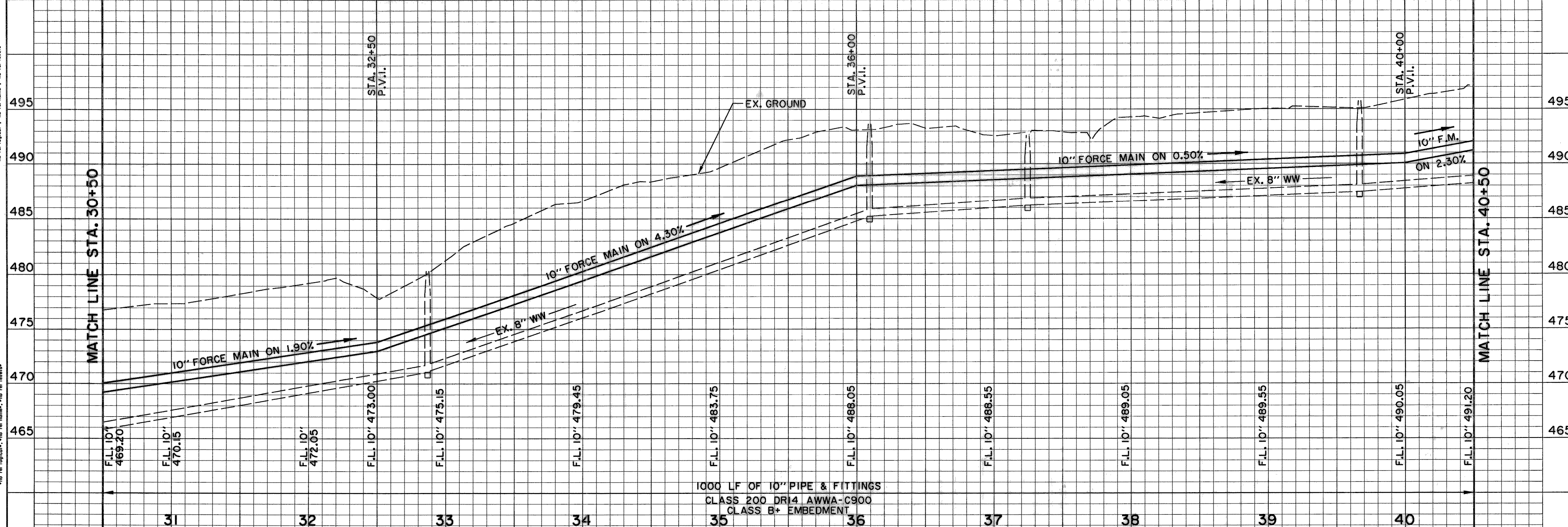
P.I. STA. 37+02.48 LINE 'C'
 $\Delta = 33^{\circ}45'00''$ RT.
 INSTALL:
 1-10" 45° BEND
 1-10" 11 1/4° BEND
 CONCRETE BLOCKING
 N 7014026.8433
 E 2590065.3902

P.I. STA. 39+02.18 LINE 'C'
 $\Delta = 11^{\circ}25'00''$ LT.
 INSTALL:
 1-10" 11 1/4° BEND
 CONCRETE BLOCKING
 N 7013964.2525
 E 2590255.0295

N 7014050.2293
 E 2589862.8387

☉ CURVE DATA
 $\Delta = 4^{\circ}49'32''$
 R = 300.00'
 T = 12.64'
 L = 25.27'

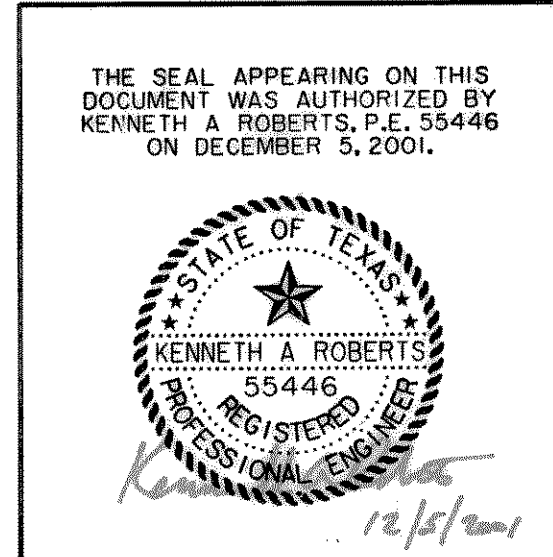
RECORD DRAWINGS JANUARY 13, 2003
 THIS RECORD DOCUMENT HAS BEEN PREPARED BASED ON INFORMATION PROVIDED BY OTHERS. THE CONSULTANT HAS NOT VERIFIED THE ACCURACY AND/OR COMPLETENESS OF THIS INFORMATION AND SHALL NOT BE RESPONSIBLE FOR ANY ERRORS OR OMISSIONS THAT MAY BE INCORPORATED AS A RESULT OF ERRONEOUS INFORMATION PROVIDED BY OTHERS.



BENCHMARKS:

BM #1 "C" CUT ON TOP OF SIGNAL RIDGE WET-WELL @ BACK OF PARKING LOT SIGNAL RIDGE PHASE 4, NEAR LEFT STATION 150' +/- FROM EDGE OF LAKE RAY HUBBARD ELEVATION 450.49

BM #2 R.R. SPIKE IN POWER POLE AT NORTH WEST CORNER OF RIDGE ROAD AND THE ENTRANCE TO GLEN HILLS CEMETERY. ELEVATION 560.65



WASTEWATER PLAN & PROFILE
 STA. 30+50 TO STA. 40+50
 LINE 'C' - FORCE MAIN
 SIGNAL RIDGE
 CITY OF ROCKWALL, TEXAS

Huff-Zollars, Inc.
 Dallas, Ft Worth, Houston, El Paso, Albuquerque, Denver, Phoenix, Tustin, Ontario, Seattle, Tacoma

DESIGN	DRAWN	APPR.	SCALE	DATE	PROJECT NO.	NO.
HZI	HZI	KAR	H ₁ 1"=40' V ₁ 1"=5'	DEC 2001	01258401	10

REF: 01258401.dgn
 DATE: 12/15/01
 PROJECT: 01258401
 SHEET: 10 OF 10
 DRAWN BY: HZI
 CHECKED BY: KAR
 DATE: 12/15/01
 SCALE: AS SHOWN
 TITLE: WASTEWATER PLAN & PROFILE
 STA. 30+50 TO STA. 40+50
 LINE 'C' - FORCE MAIN
 SIGNAL RIDGE
 CITY OF ROCKWALL, TEXAS