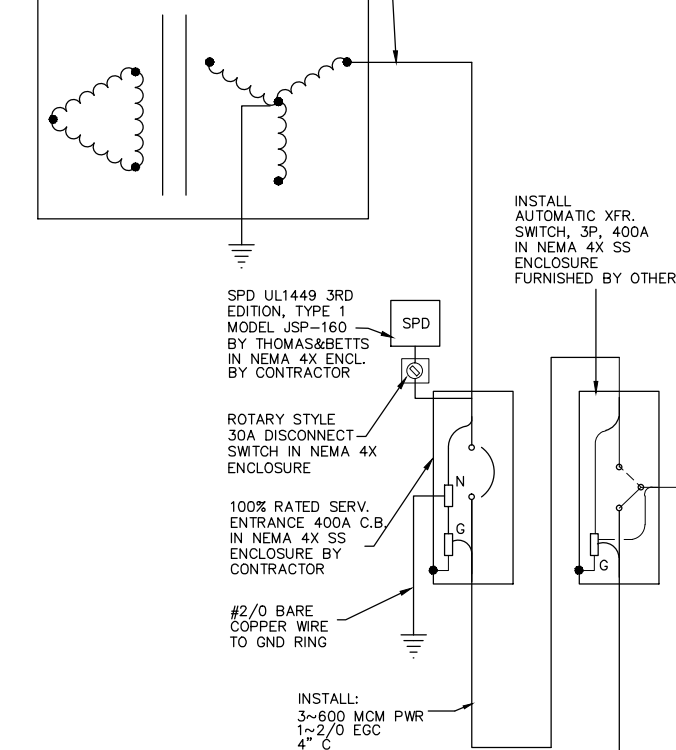


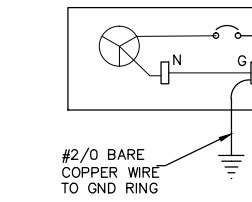
480/277VAC
3 PHASE UTILITY
TRANSFORMER (UPGRADE BY ONCOR;
NEW PAD BY CONTRACTOR PER ONCOR DETAIL)

INSTALL:
3~600 MCM PWR
1~2/0 EGC
IN 4" C
INSTALL EMPTY 4"C IN THE SAME DUCT BANK



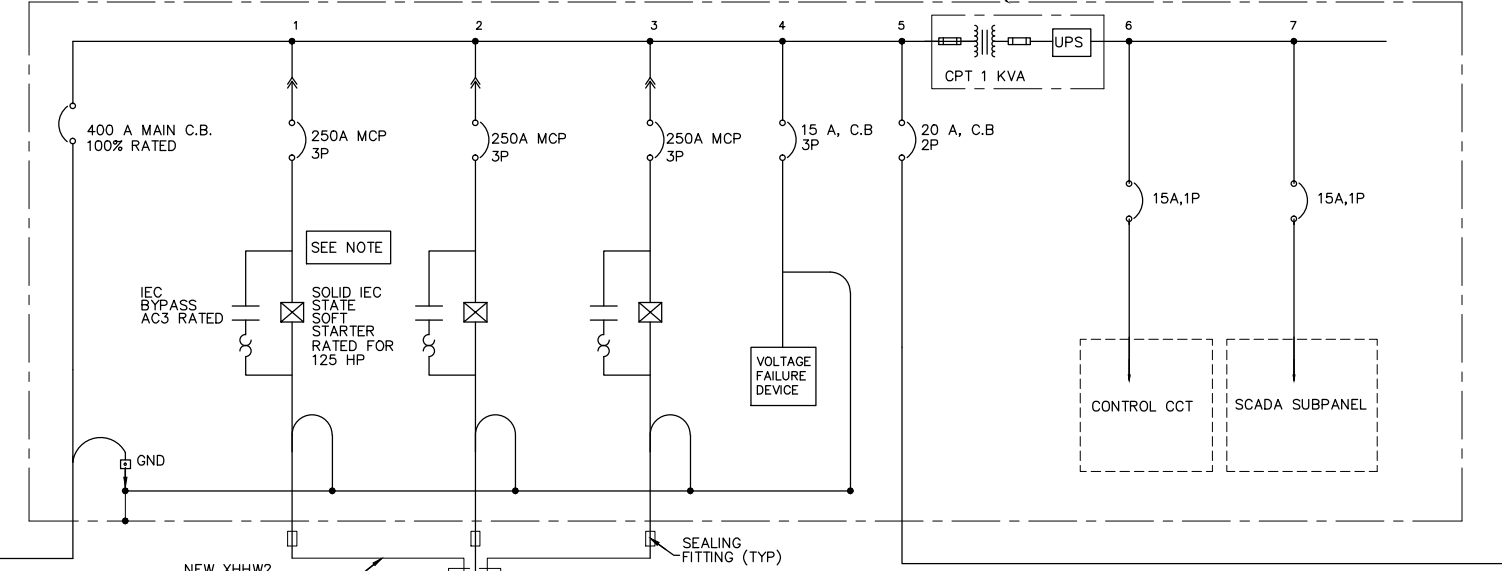
INSTALL 200 kW EMERGENCY GENERATOR W/ 400A MAIN C.B. FURNISHED BY OTHERS

INSTALL:
3~600 MCM PWR
1~2/0 EGC
4" C



INSTALL AUTOMATIC XFR. SWITCH, 3P, 400A IN NEMA 4X SS ENCL. BY OTHERS

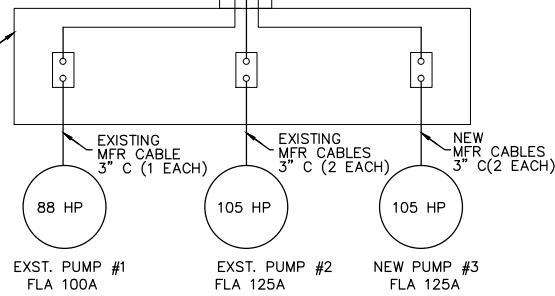
LIFT STATION CONTROL PANEL 460V, 3Ø 4W, NEMA 4X STAINLESS STEEL ENCLOSURE PURCHASED BY OTHERS INSTALLED BY CONTRACTOR



NEW XHHW2 POWER:
3~2/0 PWR
1~#6 EGC IN 3"C (TYP. EACH PUMP)

8"x8" NEMA 4X SS WIREWAY

USE EXISTING PUMP CONTROL PANEL AS A SPLICE BOX BETWEEN REMOVABLE PUMP CABLES AND PERMANENTLY SEALED 2/0 POWER WIRES

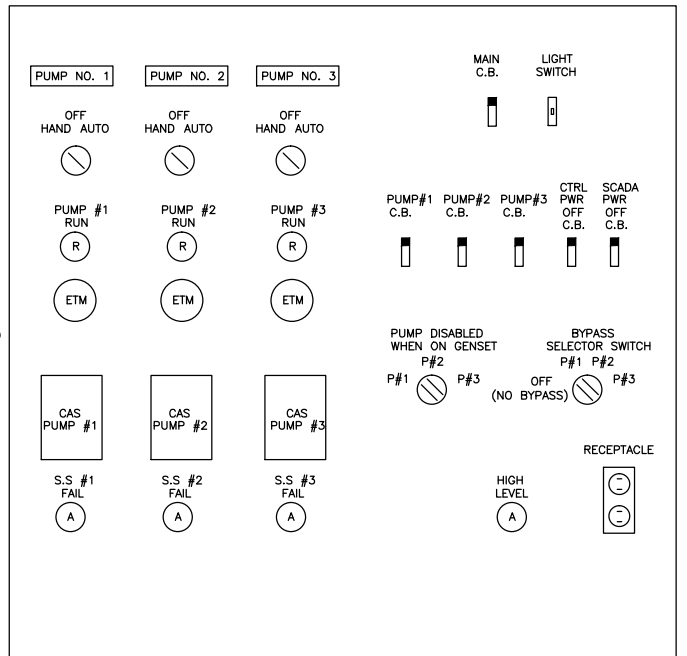
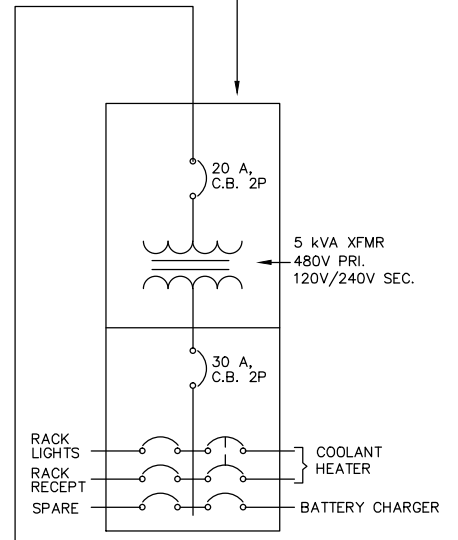


ONE LINE DIAGRAM

CONTROL PANEL BUILDER TO FURNISH:

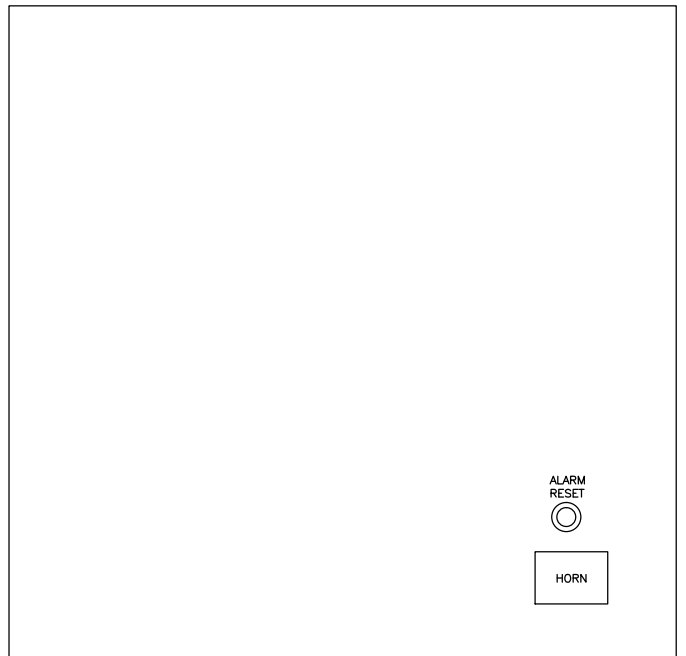
THREE (3) IDENTICAL SOFT STARTERS 125HP RATED @ 460VAC WITH IEC CONTACTOR RATED AC3 W/ BIMETALLIC OVERLOAD

1~COMB. PANEL 5 kVA IN NEMA 3R SS ENCL. BY CONTRACTOR



INTERIOR PANEL DOOR - ELEVATION

NO SCALE



EXTERIOR PANEL DOOR - ELEVATION

NO SCALE

FMI PROJECT #
15023

DAMIR LULO
90370
LICENSED PROFESSIONAL ENGINEER

THE SEAL APPEARING ON THIS DOCUMENT WAS AUTHORIZED BY DAMIR LULO, P.E. NO. 90370 ON 6/7/16

FREEMAN-MILLICAN, INC.
ENGINEERS - ARCHITECTS - PLANNERS
NORTH ABRAMS ROAD 12160, STE 508, DALLAS TX 75243 214-902-0055(PH) 214-902-1146(F) TX REG ENG. 18861-1-0007