

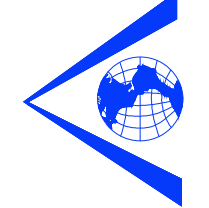
Revision	Date	Description



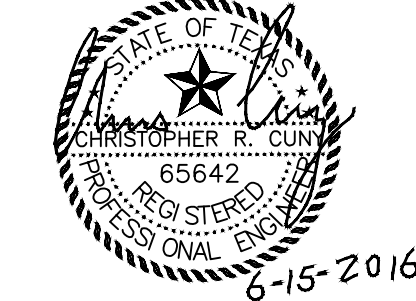
CITY OF ROCKWALL
 Owning: **CITY OF ROCKWALL**
 Developer: **Sterling One Construction L.L.C.**
 #2 Horizon Court Heath, Texas 75032 469-772-9400

Harbor District Infrastructure
 Rockwall, Texas

F.C. CUNY CORPORATION
 ~ Civil Engineer ~
 #2 Horizon Court • Heath, Texas 75032 • (469) 402-7700
 Texas Registered Engineering Firm F-7449



THE SEAL APPEARING ON THIS DOCUMENT WAS AUTHORIZED BY CHRISTOPHER R. CUNY, P.E. 65642

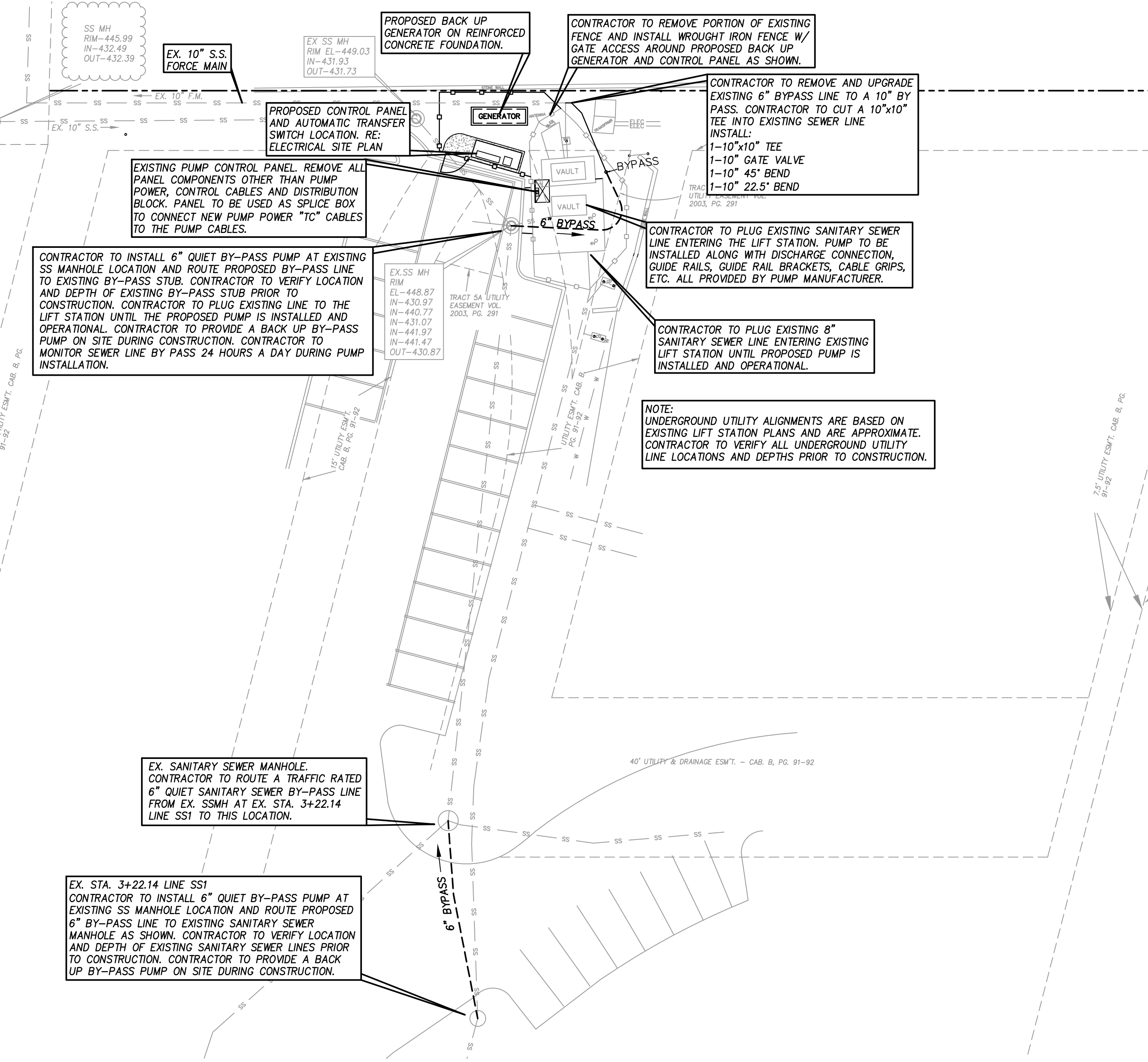
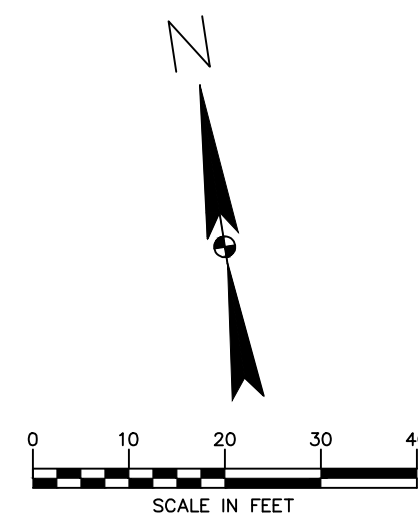
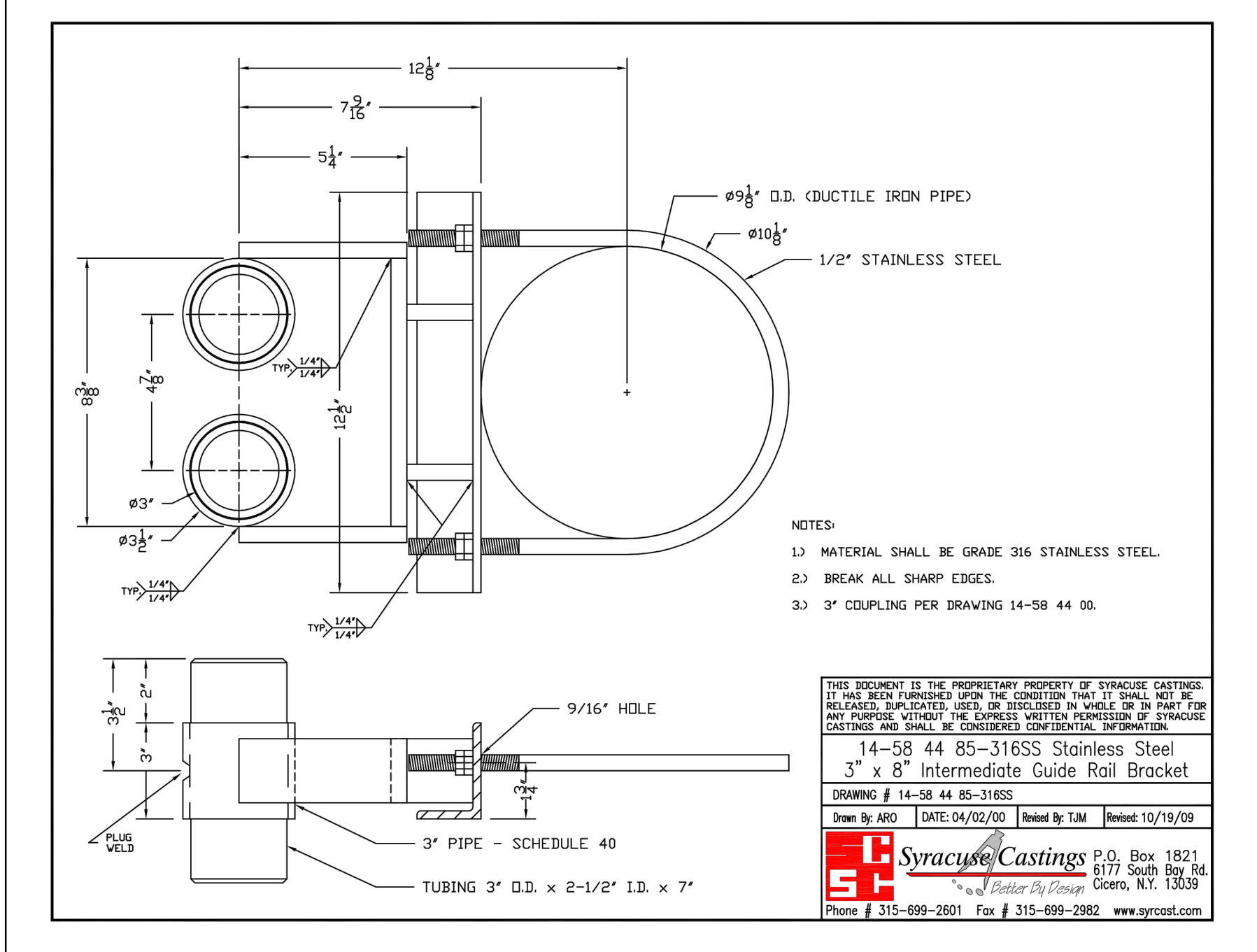


Drawn By: **F.C. CUNY** Checked By: **F.C. CUNY**
 Date: **10/15** Project No.: **-**

Sheet Title: **Signal Ridge Lift Station Plan**
 Scale: **-** Sheet No.: **-**

GENERAL NOTES

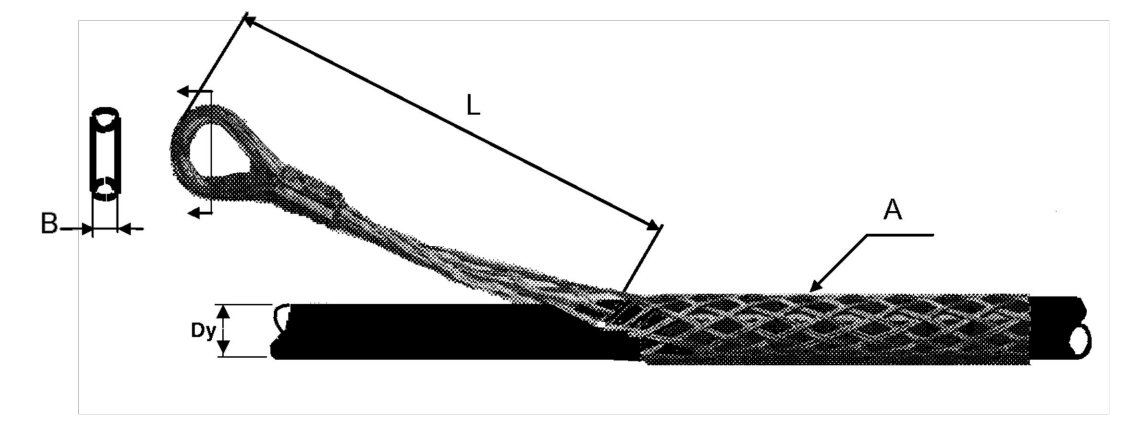
1. WASTEWATER SERVICE MUST BE MAINTAINED TO THE AREA SERVED BY THE EXISTING LIFT STATION AT ALL TIMES.
2. CONTRACTOR SHALL COORDINATE AND SCHEDULE ALL ACTIVITIES ASSOCIATED WITH THE INSTALLATION OF THE PUMP INTO THE EXISTING WET WELL IN ORDER TO MAINTAIN WASTEWATER SERVICE TO THE AREA.
3. LIFT STATION SITE AND CONSTRUCTION ACTIVITIES SHALL REMAIN FENCED AND SECURED DURING CONSTRUCTION PERIOD.
4. LOCATION AND ELEVATION OF EXISTING UTILITIES AND FEATURES ARE APPROXIMATE. PRIOR TO CONSTRUCTION, CONTRACTOR SHALL FIELD LOCATE ALL LINES THAT MAY AFFECT WORK.
5. DURING CONSTRUCTION, SUPPORT EXISTING LINES AS NECESSARY TO MAINTAIN SERVICE AT ALL TIMES.
6. SEQUENCE NOTES:
 - A. INSTALL TEMPORARY PUMP AND RAILING INTO EXISTING 4' DIAMETER MANHOLE AS SHOWN ON THIS PLAN.
 - B. CONSTRUCT A TEMPORARY SERVICE FORCE MAIN AT GROUND LEVEL FROM EXISTING 4' DIAMETER MANHOLE TO THE EXISTING BYPASS LINE LOCATED TO THE NORTH OF THE EXISTING LIFT STATION.
 - C. CONSTRUCT A TEMPORARY SERVICE FORCE MAIN FROM EX. STA. 3+22.14 TO SHOWN EXISTING MANHOLE.
 - D. PLUG EXISTING 12" SEWER LINE TO EXISTING LIFT STATION AND TURN ON TEMPORARY PUMP AT ADJACENT MANHOLE.
 - E. PLUG EXISTING 8" SEWER LINE TO EXISTING LIFT STATION AND TURN ON TEMPORARY PUMP AT EX. STA. 3+22.14
 - D. SET PROPOSED PUMP IN EXISTING LIFT STATION, UNPLUG EXISTING 12" SEWER LINE AT THE MANHOLE AND EXISTING 8" SEWER LINE AT LIFT STATION.
 - E. REMOVE TEMPORARY PUMPS AND REMOVE 6" TEMPORARY FORCE MAINS.
 - F. REMOVE EXISTING 6" BYPASS LINE AND UPGRADE TO 10" BY PASS AS SHOWN.



STANDARD PART INFORMATION

CABLE SUPPORT GRIP

Material:
 - Support grip: Stainless steel SS 14 2343
 - Thimble: Stainless steel SS 14 2333
 - Press lock: Copper



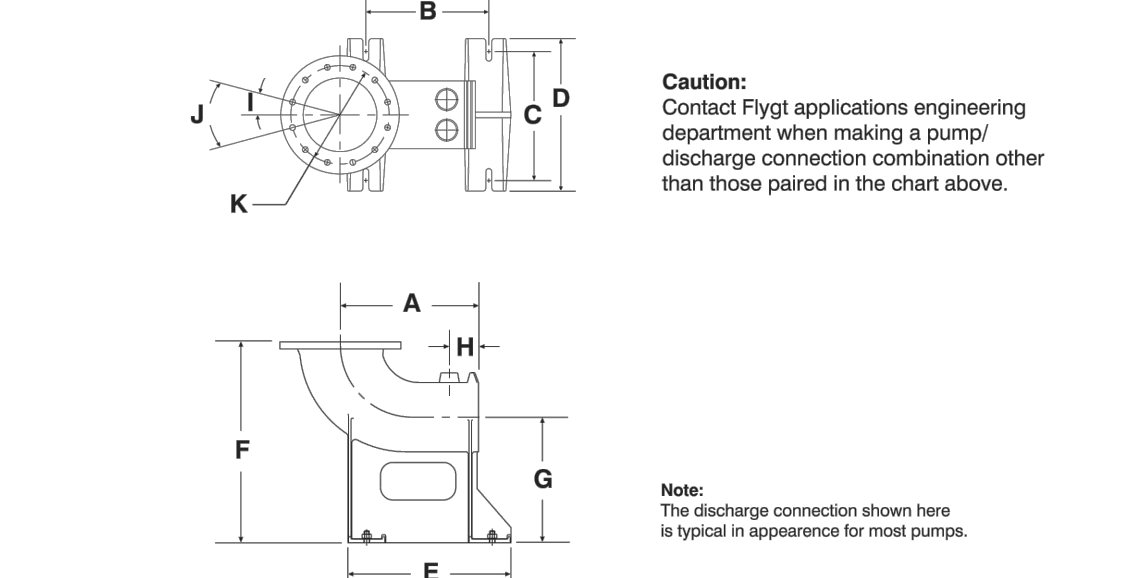
For cable D (mm)	Breadth B (mm)	Length of loop L (mm)	Number of meshes A (st/pcs)	Tot. cable weight Kg	Part number
11 - 18	8	250	18	100	83 57 23
19 - 24	9	300	18	150	83 57 24
25 - 36	11	300	18	150	83 57 25
37 - 49	15	500	25	300	83 57 26
50 - 59	16	500	25	300	83 57 27
60 - 74	17	600	25	450	83 57 28

Standard CP/NP Discharge Connections (Cast Iron)

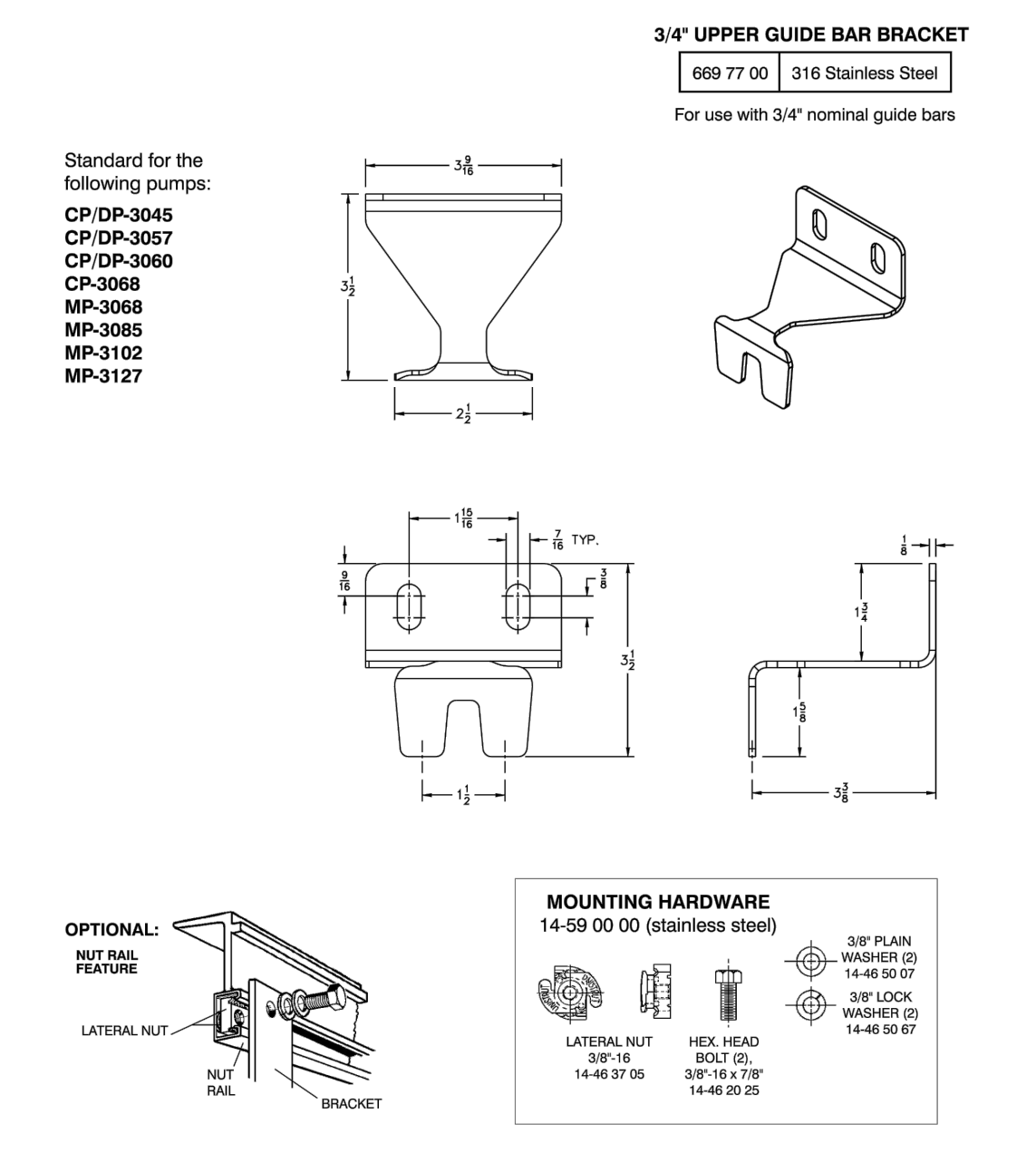
All dimensions (inches)

Pump Model	Part Number	Disch. Inlet	Disch. Outlet	A	B	C	D	E	F	G	H	I	J	K
2" - 3045, 3057, CP/FP-3068	486 55 01	2"	2 1/2" (1.5")	3 1/8"	4	4 1/2	5 1/2	7 1/4	6 3/4	3 1/8"	7/8"	-	-	-
2 1/2" - DP/FP-3068	489 17 06	2 1/2"	2 1/2"	11 5/8"	7 7/8"	4 3/4"	7 7/8"	11 7/8"	9 7/8"	6 1/2"	4 9/16"	45°	90° x 4	5 3/4"
3" - 3045, 3057, CP-3068	555 48 01	2"	3 4/8 NPT	8 3/4"	5 1/2	4 1/8	5 1/2	10 3/4"	6 3/4"	3 1/8"	7/8"	-	-	-
3" - DP-3068, 3080, 3085, 3102, 3127, 3153	444 68 05	3"	3"	14	9 7/8"	8	10 3/8"	15 3/8"	15 3/4"	7 7/8"	4 9/16"	45°	90° x 4	6
4" - 3080, 3085, 3102, 3127, 3153, 3171, 3202	540 13 05	4"	4"	14 3/4"	9 7/8"	8	10 3/8"	15 3/8"	15 3/4"	7 7/8"	4 9/16"	22.5°	45° x 8	7 1/2
6" - 3102, 3127(MT), 3153, 3171	444 70 06	5 1/2"	6"	15 9/16"	11	10	12 3/16"	15 3/8"	17 3/4"	9 7/8"	4 9/16"	22.5°	45° x 8	9 1/2
6" - 3153, 3171, 3202	602 33 06	5 1/2"	6"	15 9/16"	11	10	12 3/16"	15 3/8"	17 3/4"	9 7/8"	4 9/16"	22.5°	45° x 8	9 7/16
6" - F5221	389 25 06	6"	6"	20 1/16"	19 3/4"	15 3/4"	19 3/4"	22 3/4"	15 3/4"	7 7/8"	6 7/8"	22.5°	45° x 8	9 1/2
6" - S127(L), 3004, S153	604 56 06	6"	6"	15 9/16"	11 1/8"	10	12 3/16"	15 3/8"	17 3/4"	10 1/8"	4 9/16"	22.5°	45° x 8	9 7/16

Note: Alternative discharge connections may be available, contact Flygt Application Engineering.



Upper Guide Bar Bracket (for 3000 Series Pumps)



Upper Guide Bar Bracket (for 3000, 5500 & 8000 Series Pumps)

