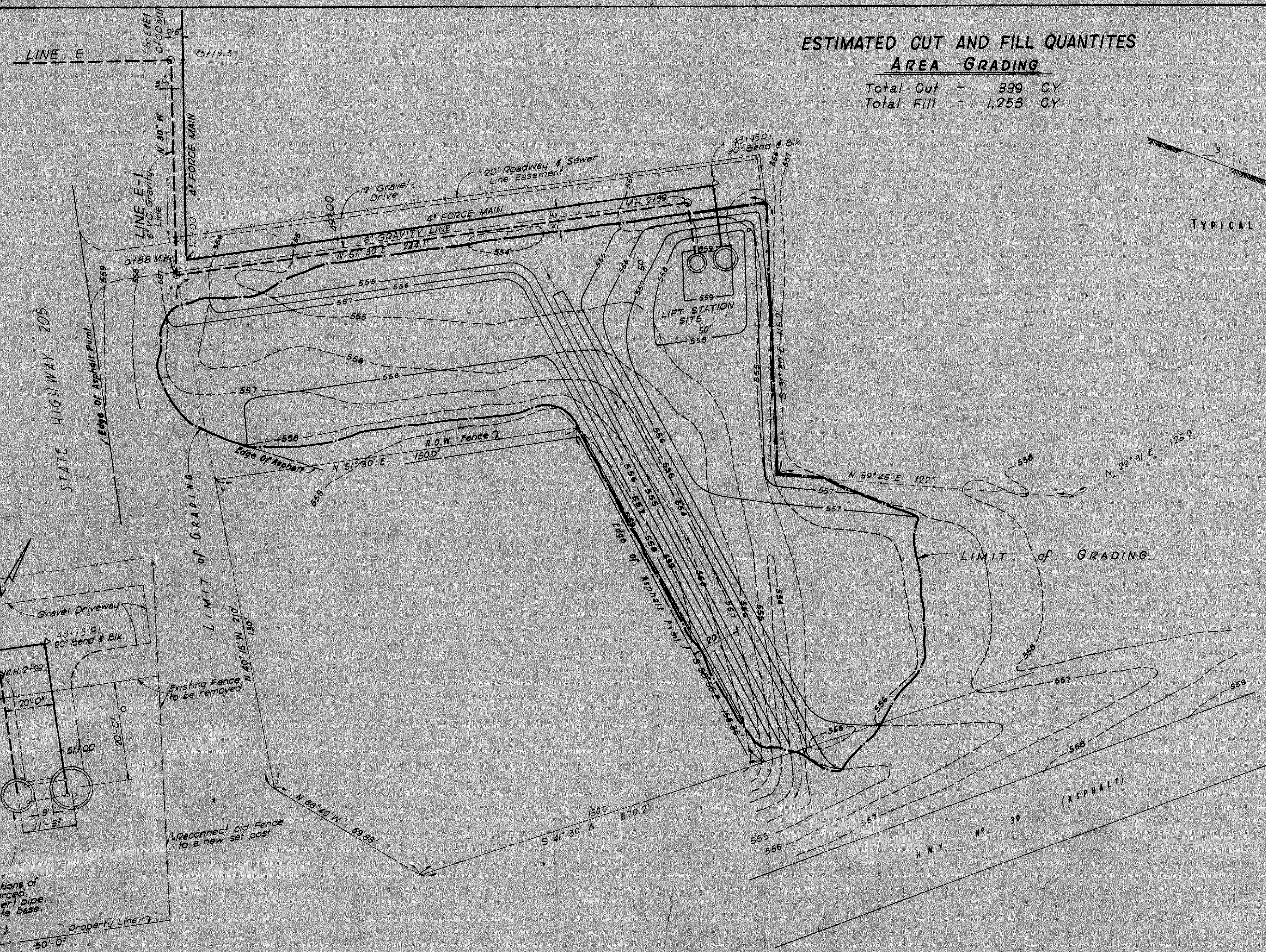
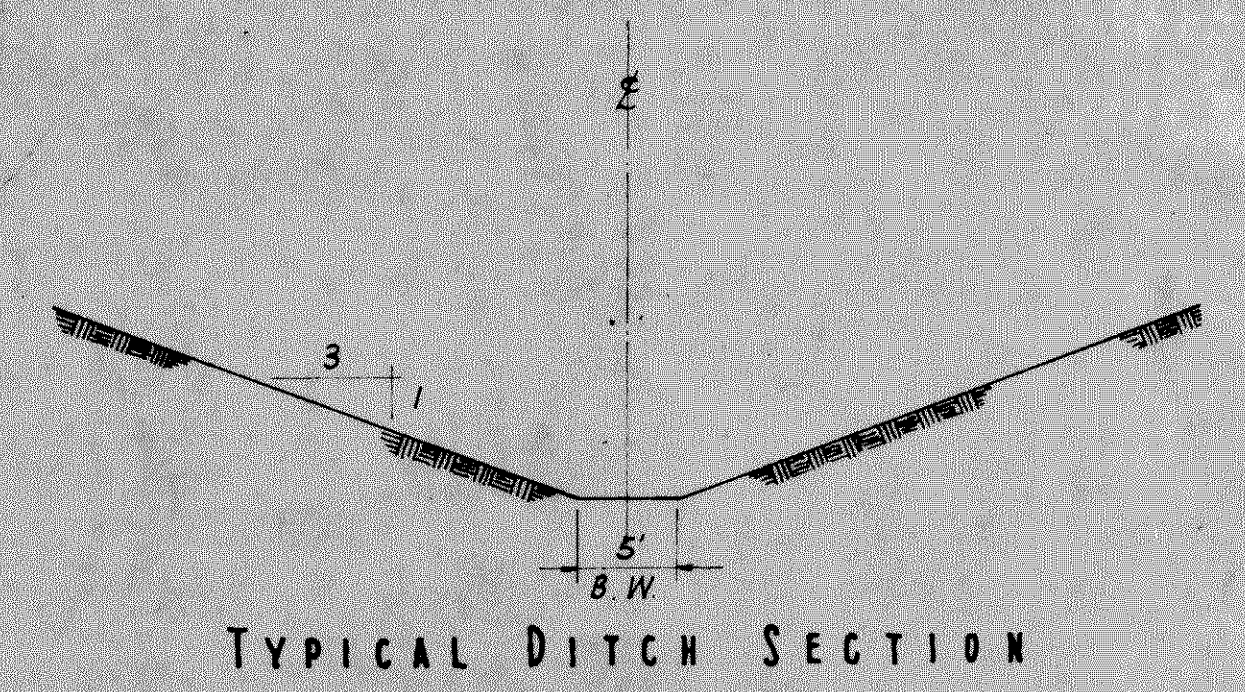


ESTIMATED CUT AND FILL QUANTITIES
AREA GRADING

Total Cut - 339 C.Y.
 Total Fill - 1,253 C.Y.



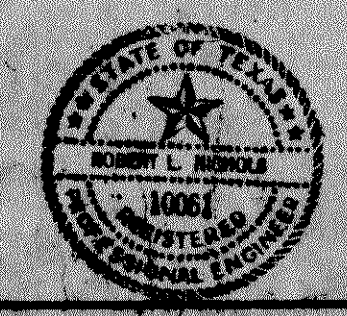
Scale - 1" = 20'

REVISED-AS BUILT
 DATE Sept 1969

CITY OF ROCKWALL, TEXAS
SEWER SYSTEM IMPROVEMENT

SOUTH LIFT STATION
GRADING PLAN

DESIGNED: D.L.D.	FRESE, NICHOLS & ENDRESS	DATE: OCT. 1967
DRAWN: D.L.D.	CONSULTING ENGINEERS	SCALE: 1" = 20'
TRACED: W.M.R.	FORT WORTH, TEXAS	JOB: 6759
CHECKED: R.L.N.		Sheet 6 of 7



LAYOUT
 Scale: 1" = 10'-0"

WET-WELL
 Two - 6 Ft. Sections of
 6' diam., reinforced,
 concrete culvert pipe,
 set on concrete base.
 8' in diam.
 (See Detail)

Reconnect old Fence
 to a new set post

Existing Fence
 to be removed

STATE HIGHWAY 205

H.W.Y. N° 30 (ASPHALT)

Asphalt P.M.

LIFT STATION SITE

M.H. 2199

LINE E-1
 6" V.C. Gravity Line
 N 30° W

LINE E
 45+19.3

M.H. 2199

4+88 M.H.

4+88 M.H.

4+88 M.H.

4+88 M.H.

4+88 M.H.

4+88 M.H.

4+88 M.H.

4+88 M.H.

4+88 M.H.

4+88 M.H.

4+88 M.H.

4+88 M.H.

4+88 M.H.

4+88 M.H.

4+88 M.H.

4+88 M.H.

4+88 M.H.

4+88 M.H.

4+88 M.H.

4+88 M.H.

4+88 M.H.

4+88 M.H.

4+88 M.H.

4+88 M.H.

4+88 M.H.

4+88 M.H.

4+88 M.H.

4+88 M.H.

4+88 M.H.

4+88 M.H.

4+88 M.H.

4+88 M.H.

4+88 M.H.

4+88 M.H.

4+88 M.H.

4+88 M.H.