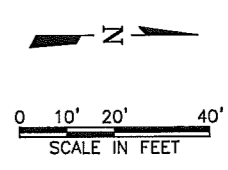


CAUTION!!!
 EXISTING GAS MAIN, FIBER OPTIC LINES AND OVERHEAD ELECTRIC LINES IN AREA CONTRACTOR TO LOCATE PRIOR TO CONSTRUCTION AND COORDINATE ANY REQUIRED RELOCATION



- NOTES:**
1. CONTRACTOR TO FIELD VERIFY ALL CONNECTIONS TO EXISTING WATER LINES.
 2. CONTRACTOR SHALL PROVIDE A WATER SERVICE AND METER BOX FOR ALL LOTS ON THROCKMORTON ROSS ST, AND LAMAR FOR THE PROJECT LIMITS. CONTRACTOR SHALL FIELD VERIFY EXISTING SERVICE LOCATIONS FOR CORNER LOTS, THOSE WHICH GET SERVICE FROM BOURN OR BOYDSTON ARE NOT INCLUDED AS PART OF THIS PROJECT.
 3. ALL WATER LINE CONNECTIONS SHALL BE RESTRAINED.
 4. MINIMUM DEPTH ON WATERLINES SHALL BE 48 INCHES.
 5. CONTRACTOR SHALL MEET ALL TCEQ REQUIREMENTS WHILE CONSTRUCTING UTILITY LINES

BENCHMARKS:
 BM#1 CHISELED BOX CUT ON THE NORTHEAST CURB RETURN OF CIRCLE DRIVEWAY OF 302 BOYDSTUN ST., AT THE NORTHEAST CORNER OF BOYDSTUN ST. AND SAM HOUSTON. ELEVATION=571.25

MAY 14, 2007 10:19:16 A.M. LITS: 1.00 PLOTS: 0 TWIST: 270.0
 3 REFERENCE FILES: N:\V\BASE\CV-ALL-PL-SITE, N:\V\BASE\CV-ALL-PL-TOPO and N:\STANDARD\34BORDER

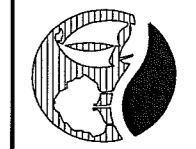
This Record Drawing is a combination of the sealed engineering contract drawings for this field order and information furnished by the contractor. The information shown on the Record Drawings is believed to be accurate based on construction and information furnished by others. The original sealed drawings are on file at the offices of FRESSE AND NICHOLS, INC. 1701 N. Market Street, Suite 300, LB 51 FORT WORTH, TEXAS 76109-1680 (817) 730-7200 FAX (817) 730-7208 RECORD DRAWING PREPARED ON: 12/20/2008

ISSUED FOR CONSTRUCTION
 ON: 3/19/2008

THIS DRAWING IS A COMBINATION OF THE SEALED ENGINEERING CONTRACT DRAWINGS FOR THIS FIELD ORDER AND INFORMATION FURNISHED BY THE CONTRACTOR. THE INFORMATION SHOWN ON THIS RECORD DRAWING IS BELIEVED TO BE ACCURATE BASED ON CONSTRUCTION AND INFORMATION FURNISHED BY OTHERS. THE ORIGINAL SEALED DRAWINGS ARE ON FILE AT THE OFFICES OF FRESSE AND NICHOLS, INC. 1701 N. MARKET STREET, SUITE 300, LB 51 FORT WORTH, TEXAS 76109-1680 (817) 730-7200 FAX (817) 730-7208

Fresse and Nichols
 1701 N. Market Street, Suite 300, LB 51
 Fort Worth, Texas 76109-1680
 Phone - (214) 920-2500
 Fax - (214) 920-2565

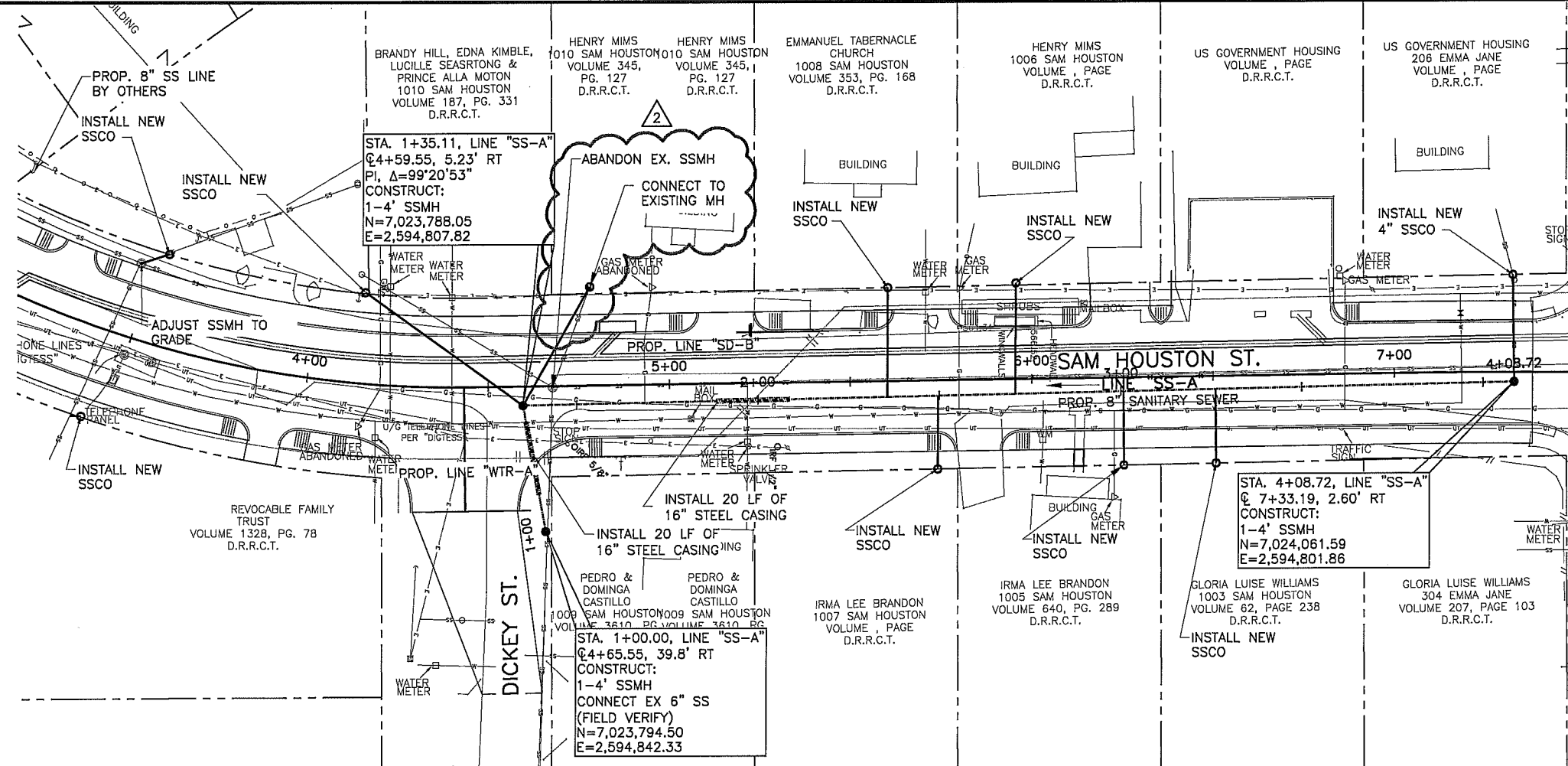
CITY OF ROCKWALL, TEXAS
 SAM HOUSTON STREET IMPROVEMENTS
 PLAN AND PROFILE
 WATERLINE "WTR-C"
 MISCELLANEOUS UTILITIES



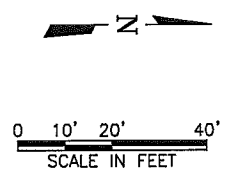
NO.	ISSUE	DATE	BY	DATE	FOR JOB NO.
1	ISSUED FOR CONSTRUCTION	03/19/08	KRJ	12/30/08	BRANK
2	VERIFY SCALE	03/19/08	KRJ	03/19/08	REVISION
3	FILE NAME				CV-ROK-PP-WAT02.dwg

RECORD
 UT-2
 SHEET
 SEQ. 17 OF 31

MAY 14, 2007 10:22:32 A.M. LOTS: 1.00 PSLTS: 0 TWIST: 270.0, 270.0
 4 REFERENCE FILES: N:\F\BASE\CV-ALL-PL-SITE, N:\F\BASE\CV-ALL-PL-TOPO, N:\F\BASE\CV-ALL-PR-SS-A and N:\STANDARD\3-BORDER



NOTE:
 1. CONTRACTOR SHALL PROVIDE FUTURE SEWER SERVICE CONNECTIONS AND SET A CLEANOUT AT THE ROW LINE FOR ALL VACANT LOTS.



This Record Drawing is a combination of the sealed engineering contract drawings for this project, modified by addenda, change order, field notes and information furnished by the contractor. The information shown on this drawing is believed to be accurate based on our observations performed during construction and information furnished by others. The files of FRESSE AND NICHOLS, INC. 4005 INTERNATIONAL PARK, SUITE 200 FORT WORTH, TEXAS 76107-4685 (817) 725-7200 (817) 725-4685 RECORD DRAWING PREPARED ON: 12/29/2008

MATCHLINE STA 7+50
 SEE SHEET UT-4

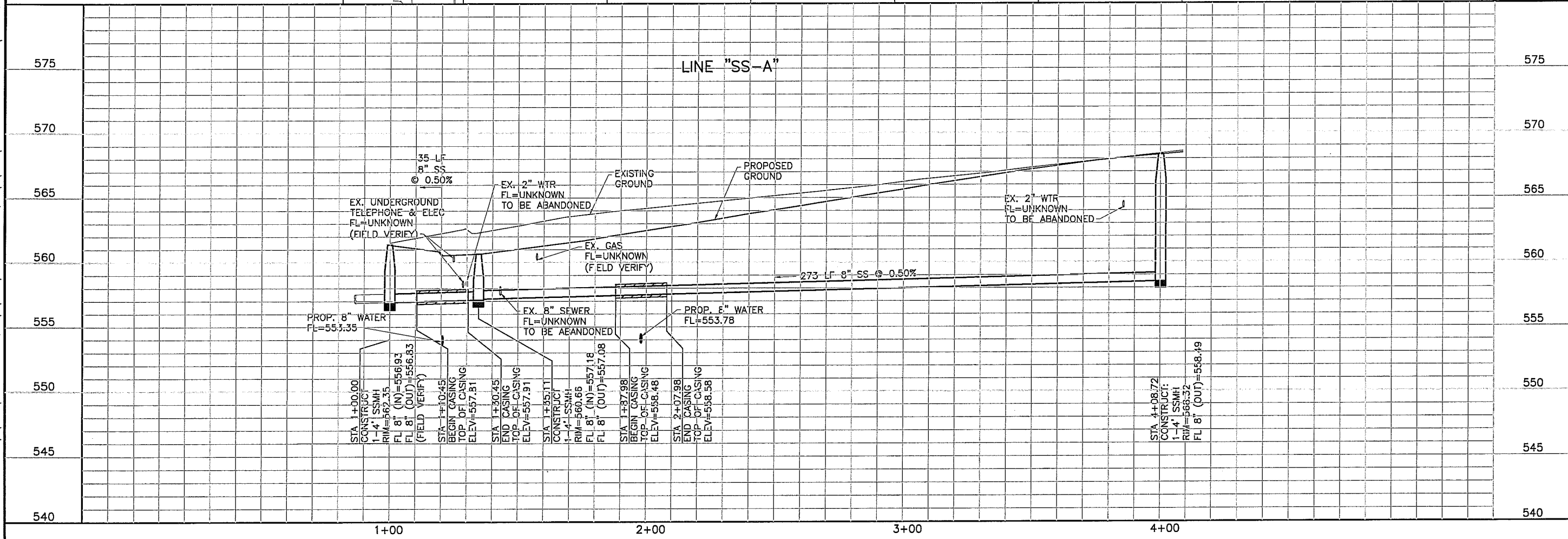
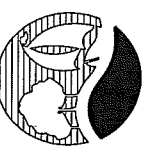
CAUTION!!!
 EXISTING GAS MAIN, FIBER OPTIC LINES AND OVERHEAD ELECTRIC LINES IN AREA CONTRACTOR TO LOCATE PRIOR TO CONSTRUCTION AND COORDINATE ANY REQUIRED RELOCATION

SCALE:
 HORIZ: 1" = 20'
 VERT 1" = 4'

ISSUED FOR CONSTRUCTION
 ON 3/19/2008

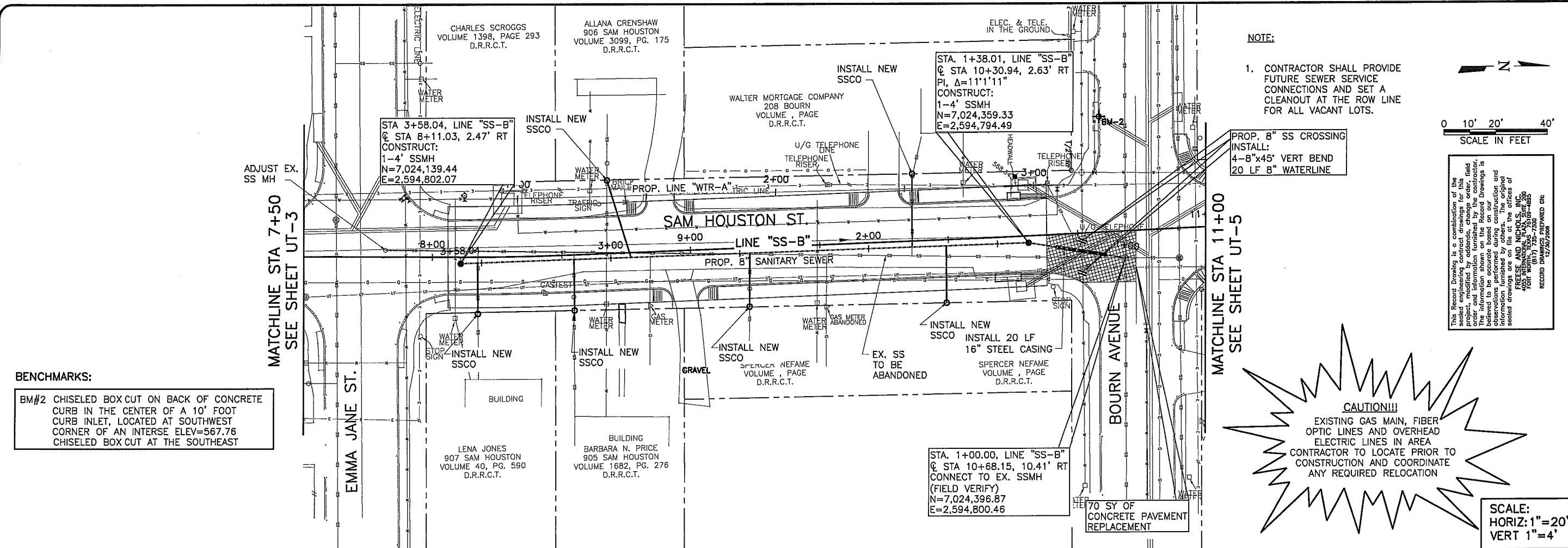
Fresse and Nichols
 4005 INTERNATIONAL PARK, SUITE 200
 FORT WORTH, TEXAS 76107-4685
 Phone - (214) 920-2500
 Fax - (214) 920-2555

CITY OF ROCKWALL, TEXAS
SAM HOUSTON STREET IMPROVEMENTS
 PLAN AND PROFILE
SANITARY SEWER LINE "SS-A"



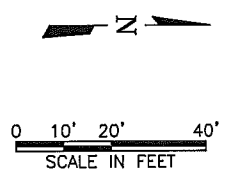
NO.	ISSUE	DATE	BY	DATE	FOR JOB NO.	FILE NAME
0	ISSUED FOR CONSTRUCTION		KRJ	03/19/08	CV-ROK-PP-SS-UT-3.dwg	
1	VERIFY SCALE		KRJ	03/19/08	CV-ROK-PP-SS-UT-3.dwg	
2	RECORD		KRJ	12/30/08	CV-ROK-PP-SS-UT-3.dwg	
3	DESIGNED	MAR 2008	CCB			
4	DRAWN		MJP			
5	CHECKED		KRJ			
6	REVIEWED		KRJ			

MAY 23, 2007 9:59:12 P.M. LITS: 1.00 PLS: 0 TWIST: 270.0, 270.0
 4 REFERENCE FILES: N:\F\BASE\CV-ALL-PL-SITE, N:\F\BASE\CV-ALL-PL-TOPO, N:\F\BASE\CV-ALL-PR-SS-A and N:\STANDARD\34BORDER



BENCHMARKS:
 BM#2 CHISELED BOX CUT ON BACK OF CONCRETE CURB IN THE CENTER OF A 10' FOOT CURB INLET, LOCATED AT SOUTHWEST CORNER OF AN INTERSE ELEV=567.76 CHISELED BOX CUT AT THE SOUTHEAST

NOTE:
 1. CONTRACTOR SHALL PROVIDE FUTURE SEWER SERVICE CONNECTIONS AND SET A CLEANOUT AT THE ROW LINE FOR ALL VACANT LOTS.



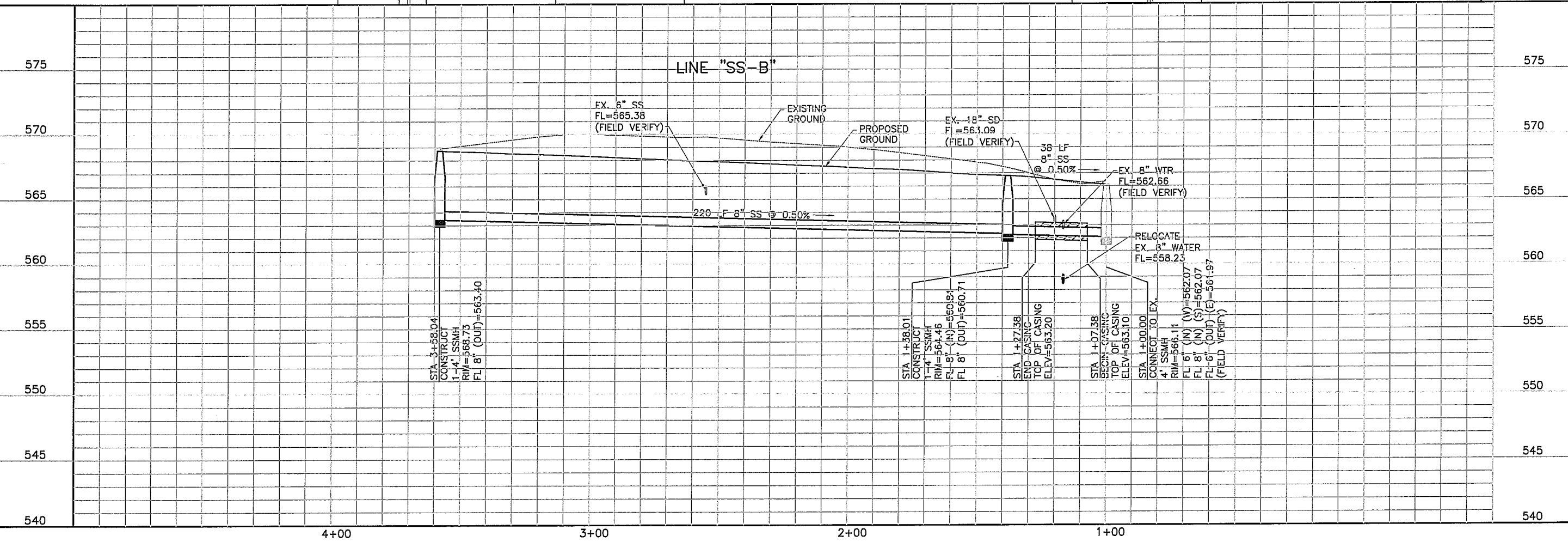
This Record Drawing is a continuation of the sealed engineering contract drawings for this project, modified by addenda, change order, field order and information furnished by the contractor. The contractor is responsible for the accuracy of the drawings. It is believed to be accurate based on our observations performed during construction and information furnished by others. The original sealed drawings are on file at the offices of:
 FRESE AND NICHOLS
 4005 INTERMEDIAL PL, SUITE 200
 FORT WORTH, TEXAS 76106-4655
 (817) 735-7250
 RECORD DRAWINGS PREPARED ON: 12/20/2008

MATCHLINE STA 11+00
 SEE SHEET UT-5

MATCHLINE STA 7+50
 SEE SHEET UT-3

CAUTION!!!
 EXISTING GAS MAIN, FIBER OPTIC LINES AND OVERHEAD ELECTRIC LINES IN AREA
 CONTRACTOR TO LOCATE PRIOR TO CONSTRUCTION AND COORDINATE ANY REQUIRED RELOCATION

SCALE:
 HORIZ: 1" = 20'
 VERT 1" = 4'



ISSUED FOR CONSTRUCTION ON 3/19/2008

THE SEAL APPEARING ON THIS DOCUMENT WAS VALIDATED BY THE STATE OF TEXAS ON 03/19/2008

Freese and Nichols
 4005 INTERMEDIAL PL, SUITE 200
 FORT WORTH, TEXAS 76106-4655
 Phone - (214) 920-2500
 Fax - (214) 920-2565

CITY OF ROCKWALL, TEXAS
SAM HOUSTON STREET IMPROVEMENTS
 PLAN AND PROFILE

SANITARY SEWER LINE "SS-B"

NO.	ISSUE	DATE	BY	DATE	FILE NAME
1	ISSUED FOR CONSTRUCTION	12/30/08	KRJ	03/19/08	CV-ROK-PP-SSEW02.dwg
2	VERIFY SCALE				

Bar is one inch on original drawing, if not one inch on this sheet, adjust scale.

RECORD DRAWINGS PREPARED ON: 12/20/2008

UT-4

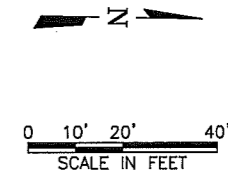
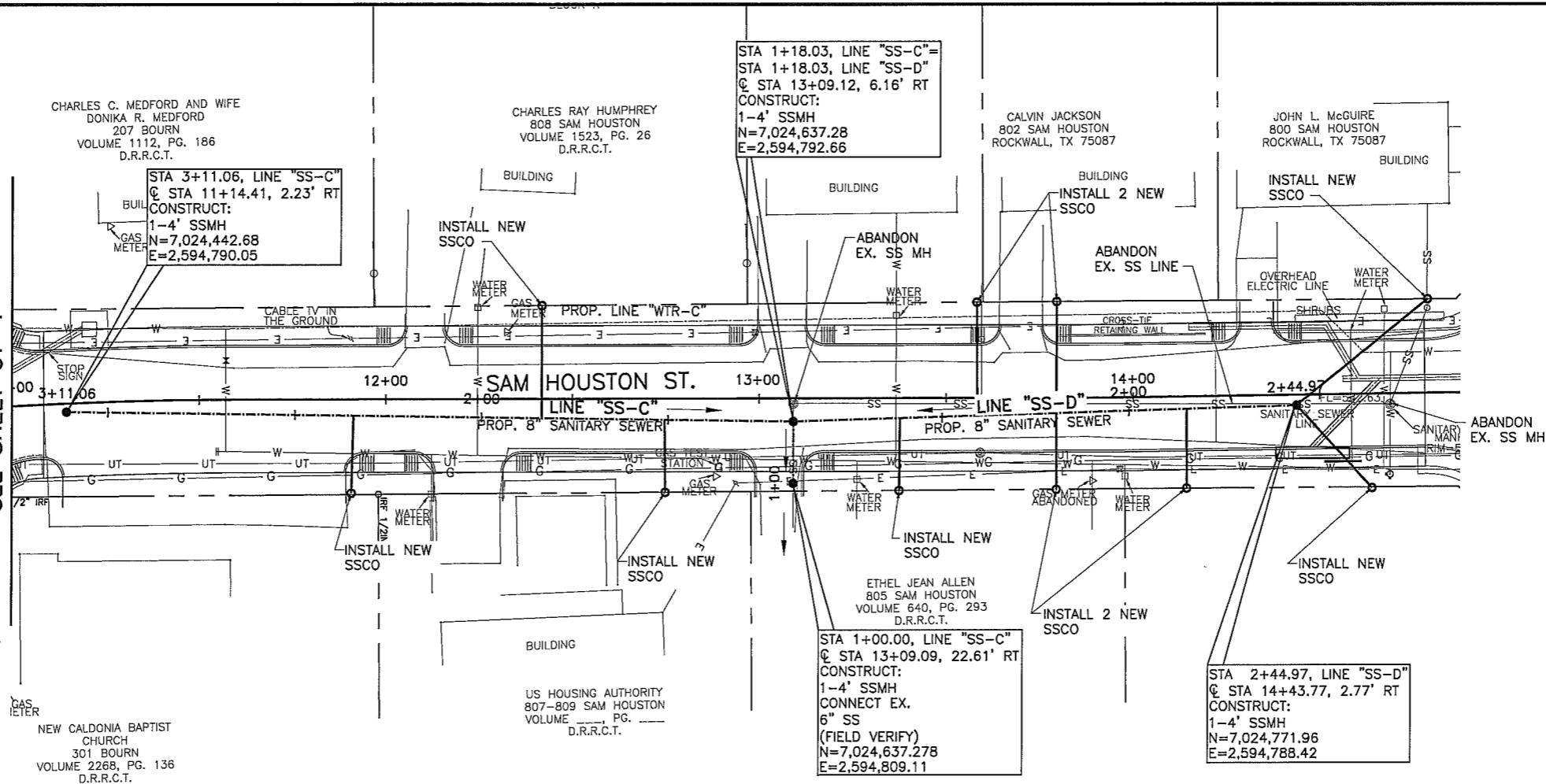
19 OF 31

BENCHMARK:
 BM#2 CHISELED BOX CUT ON BACK OF CONCRETE CURB IN THE CENTER OF A 10' FOOT CURB INLET, LOCATED AT SOUTHWEST CORNER OF BOURN AND SAM HOUSTON ST. ELEV=567.76

NOTE:
 1. CONTRACTOR SHALL PROVIDE FUTURE SEWER SERVICE CONNECTIONS AND SET A CLEANOUT AT THE ROW LINE FOR ALL VACANT LOTS.

CAUTION!!!
 EXISTING GAS MAIN, FIBER OPTIC LINES AND OVERHEAD ELECTRIC LINES IN AREA CONTRACTOR TO LOCATE PRIOR TO CONSTRUCTION AND COORDINATE ANY REQUIRED RELOCATION

MATCHLINE STA 11+00
 SEE SHEET UT-4



This Record Drawing is a combination of the sealed engineering contract drawings for the field order and information furnished by the contractor. The information shown on the Record Drawing is believed to be accurate based on our inspection and information furnished by others. The original sealed drawings are on file at the office of FRESSE AND NICHOLS, INC. 4601 WORTH, TEXAS 75099-4685 (817) 251-7300 RECORDED 12/29/2008

ISSUED FOR CONSTRUCTION
 03.15.2008

Fresse and Nichols
 1701 N. Meador Street, Suite 500, LB 51
 Dallas, Texas 75202-2001
 Phone - (214) 920-2500
 Fax - (214) 920-2555

SCALE:
 HORIZ: 1"=20'
 VERT 1"=4'

CITY OF ROCKWALL, TEXAS
 SAM HOUSTON STREET
 IMPROVEMENTS
 PLAN AND PROFILE
 SANITARY SEWER LINES
 "SS-C" AND "SS-D"



NO. / ISSUE	DATE	BY	FOR JOB NO.
RECORD	12/30/08	KRU	ROK06451
ISSUED FOR CONSTRUCTION	03/19/08	KRU	ROK06451
VERIFY SCALE			
0			
1			
2			

SHEET
 UT-5
 SEQ.
 20 OF 31

MAY 23, 2007 9:46:23 P.M. LITS: 2.00 PLSITS: 270.0, 270.0, 270.0, 270.0, 270.0 N:\V\F\BASE\CV-ALL-PL-SITE, N:\V\F\BASE\CV-ALL-PL-TOPO, N:\V\F\BASE\CV-ALL-PR-SS-A, N:\V\F\BASE\CV-ALL-PR-SS-B and N:\STANDARD\34BORDER

