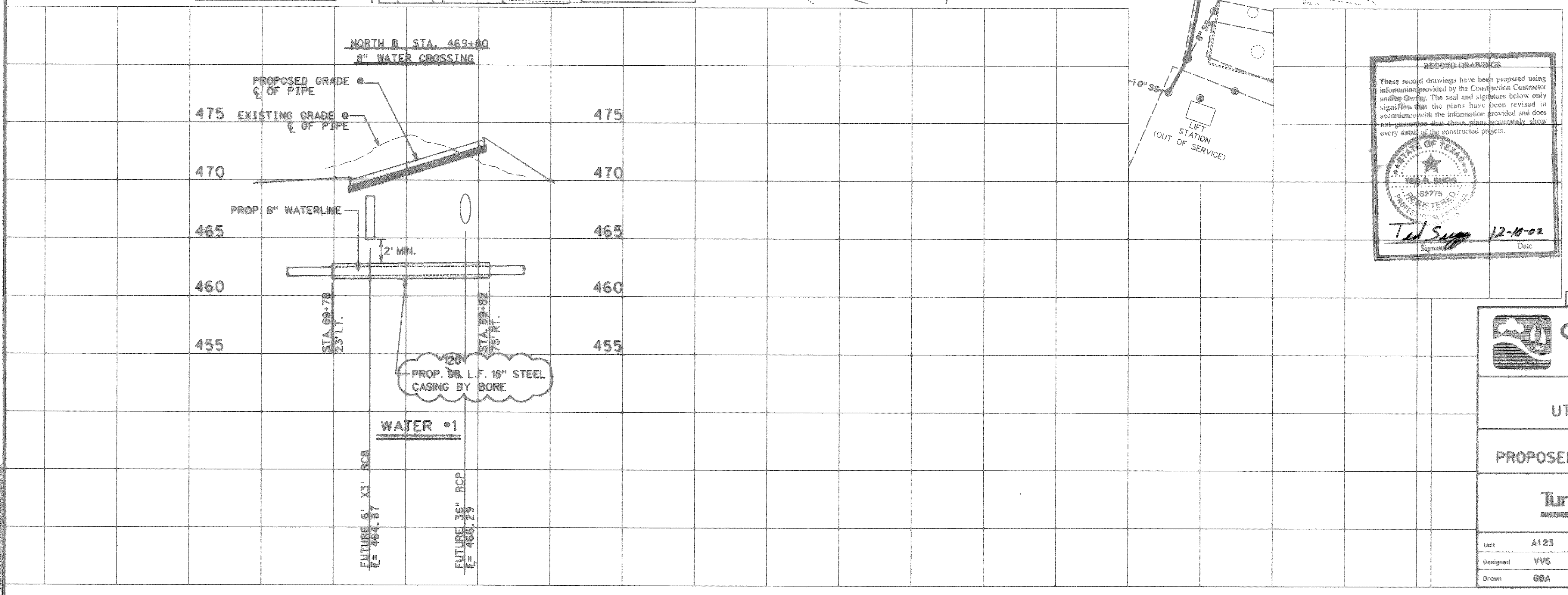


LEGEND	
●	IRON ROD
○	STORM MANHOLE
⚡	POWER POLE
⊕	WATER VALVE
⊠	TRAFFIC SIGNAL CONTROL BOX
⊙	TRAFFIC LIGHT
⊕	WATER METER
⊕	LIGHT STANDARD
⊕	SIGN
⊕	ELECTRIC BOX
⊕	FIRE HYDRANT
⊕	GUY WIRE
⊕	TELEPHONE BOX
⊕	SANITARY MANHOLE
⊕	POST
⊕	GROUND LIGHT
⊕	MONUMENT
⊕	SPRINKLER HEAD
⊕	GAS METER
⊕	GAS VALVE
⊕	IRON PIPE
⊕	CLEAN OUT
⊕	GRATE INLET
⊕	MAILBOX
⊕	TELEPHONE MANHOLE



RECORD DRAWINGS

These record drawings have been prepared using information provided by the Construction Contractor and/or Owner. The seal and signature below only signifies that the plans have been revised in accordance with the information provided and does not guarantee that these plans accurately show every detail of the constructed project.

STATE OF TEXAS  
VORANIQUE V. SIMON  
82775  
PROFESSIONAL ENGINEER

Signature: *Ted Sapp* Date: 12-10-02

UNDERGROUND UTILITIES

THE LOCATION OF EXISTING UTILITIES SHOWN ON THESE PLANS ARE APPROXIMATE AND BASED ON DATA FURNISHED BY UTILITY COMPANIES. IT IS THE RESPONSIBILITY OF THE CONTRACTOR TO LOCATE AND VERIFY ON-SITE THE UTILITIES THAT MAY CONFLICT WITH THE CONSTRUCTION.

STATE OF TEXAS  
VORANIQUE V. SIMON  
86381  
PROFESSIONAL ENGINEER

THE SEAL APPEARING ON THIS DOCUMENT WAS AUTHORIZED BY VORANIQUE V. SIMON, P.E. 86381 ON 23 APRIL 2001

4 9-02 RECORD DRAWINGS

**CITY OF ROCKWALL**  
"THE NEW HORIZON"

S.H. 66  
UTILITY RELOCATIONS

UTILITY PLAN AND PROFILE  
PROPOSED WATER LINE RELOCATIONS

**Turner Collie & Braden Inc.**  
ENGINEERS • PLANNERS • PROJECT MANAGERS

Unit	A123	Scale:	Horz. 1"=40' Vert. 1"=5'	Date	APRIL, 2001
Designed	VVS	Checked	TBS	Job No.	15-98925-300
Drawn	GBA	Approved	RCR		SHEET 4 OF 19