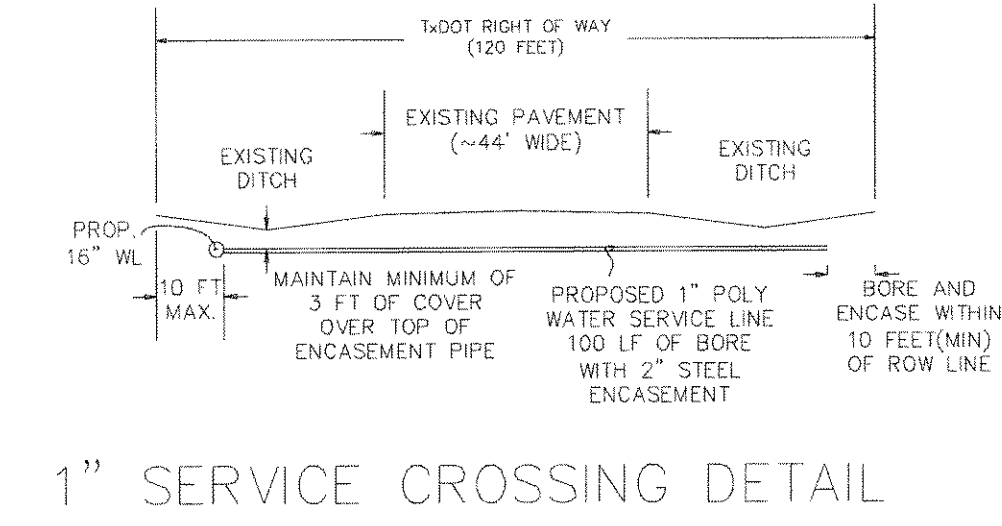
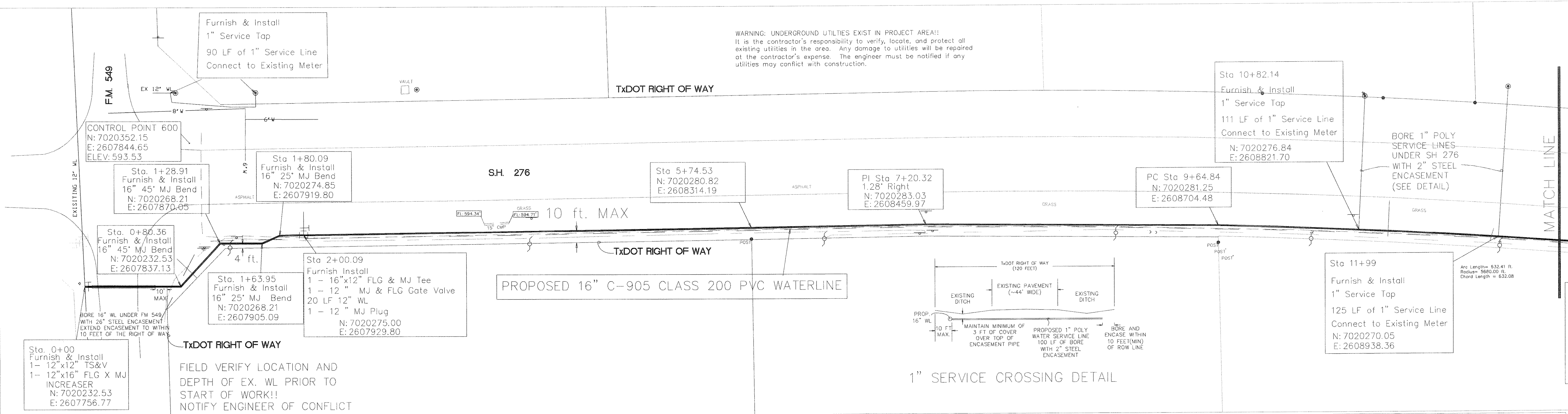
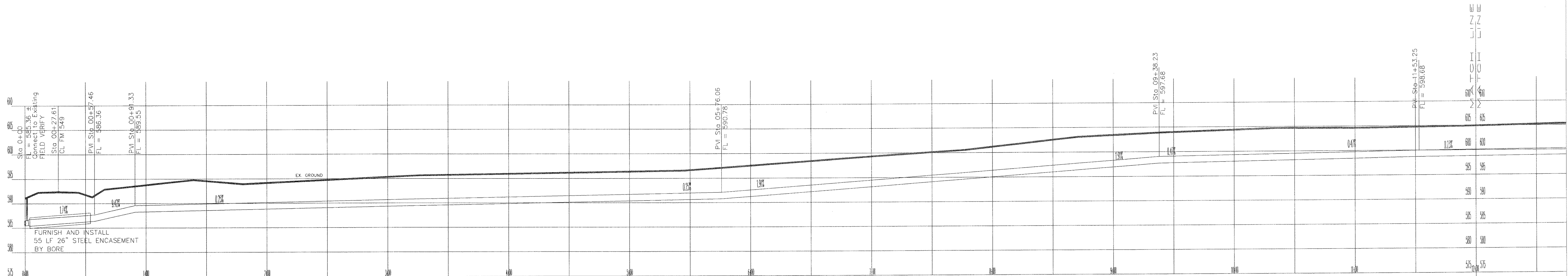


WARNING: UNDERGROUND UTILITIES EXIST IN PROJECT AREA!!
 It is the contractor's responsibility to verify, locate, and protect all existing utilities in the area. Any damage to utilities will be repaired at the contractor's expense. The engineer must be notified if any utilities may conflict with construction.

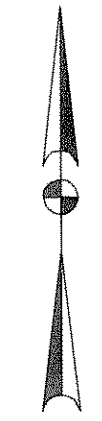
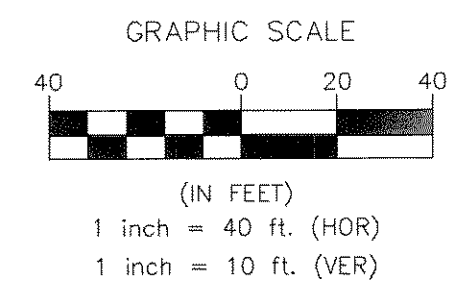


FIELD VERIFY LOCATION AND DEPTH OF EX. WL PRIOR TO START OF WORK!!
 NOTIFY ENGINEER OF CONFLICT



SYMBOL LEGEND

[Symbol]	POWER POLE
[Symbol]	DUY WIRE
[Symbol]	TELEPHONE BOX
[Symbol]	IRON ROD
[Symbol]	WATER VALVE
[Symbol]	WATER METER
[Symbol]	IRRIGATION CONTROL VALVE
[Symbol]	MONUMENT
[Symbol]	SIGN
[Symbol]	ELECTRIC BOX



SH 276 WATERLINE IMPROVEMENTS
 16" WATERLINE
 ROCKWALL, TEXAS
 CITY OF ROCKWALL
 "THE NEW HORIZON"

DESIGNED:	
DRAWN:	ACAD
JOB NO.	DATE: 9/00
SHEET NO. 2 of 3	