

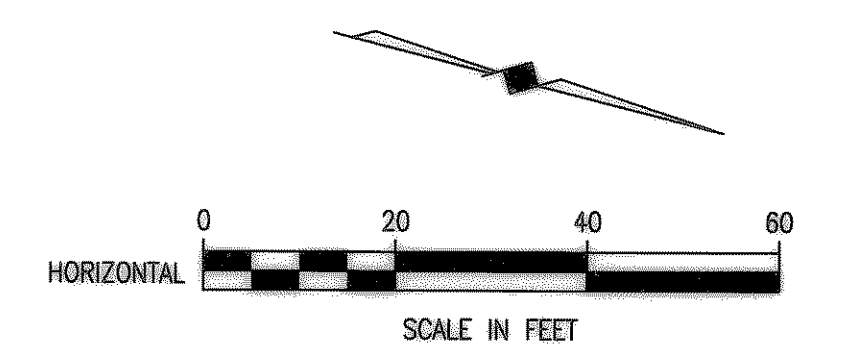
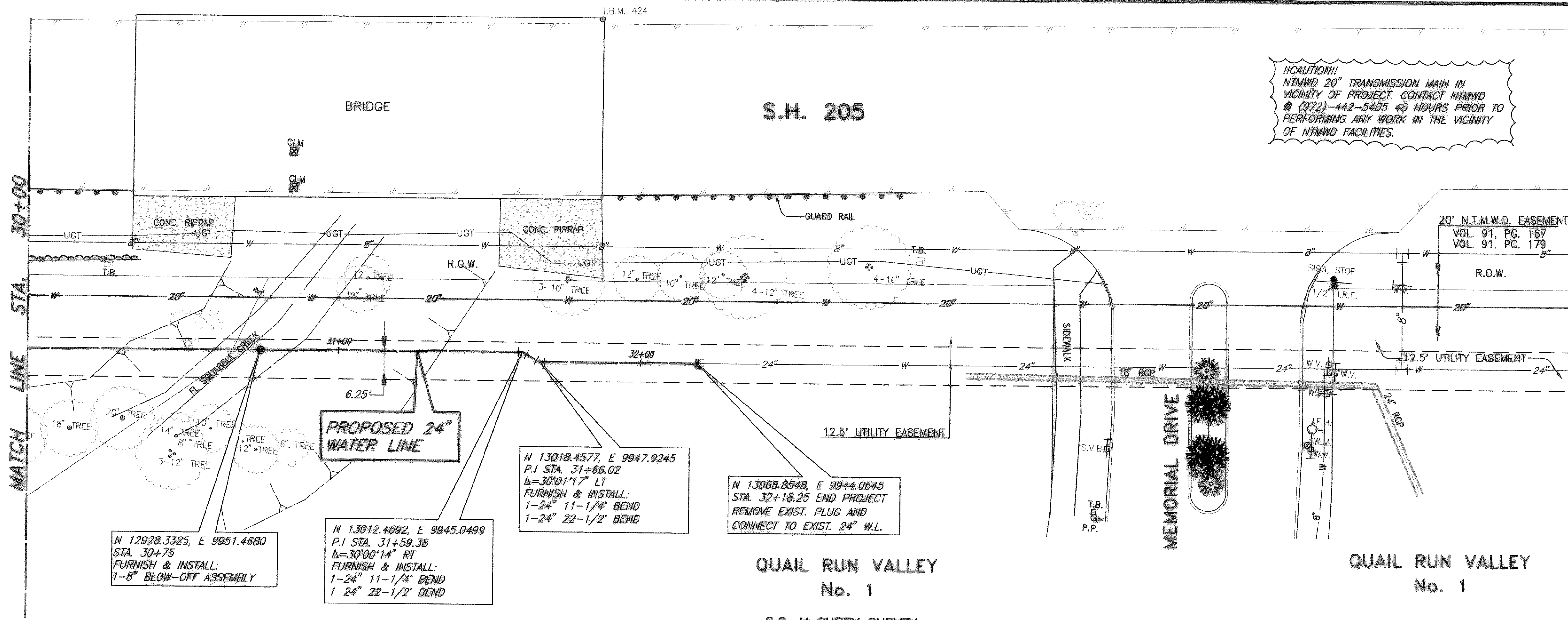
XREF: ROCKWALL_2002143\PROFILES

XREF: ROCKWALL_2002143\BASE ALIGNMENT

SCALE: 1"=40'

H:\ROCKWALL_2002143\SHEETS\2002143-07.DWG

02/04/03 J.C.



N 12928.3325, E 9951.4680
 STA. 30+75
 FURNISH & INSTALL:
 1-8" BLOW-OFF ASSEMBLY

N 13012.4692, E 9945.0499
 P.I. STA. 31+59.38
 $\Delta=30'00''14''$ RT
 FURNISH & INSTALL:
 1-24" 11-1/4" BEND
 1-24" 22-1/2" BEND

N 13018.4577, E 9947.9245
 P.I. STA. 31+66.02
 $\Delta=30'01''17''$ LT
 FURNISH & INSTALL:
 1-24" 11-1/4" BEND
 1-24" 22-1/2" BEND

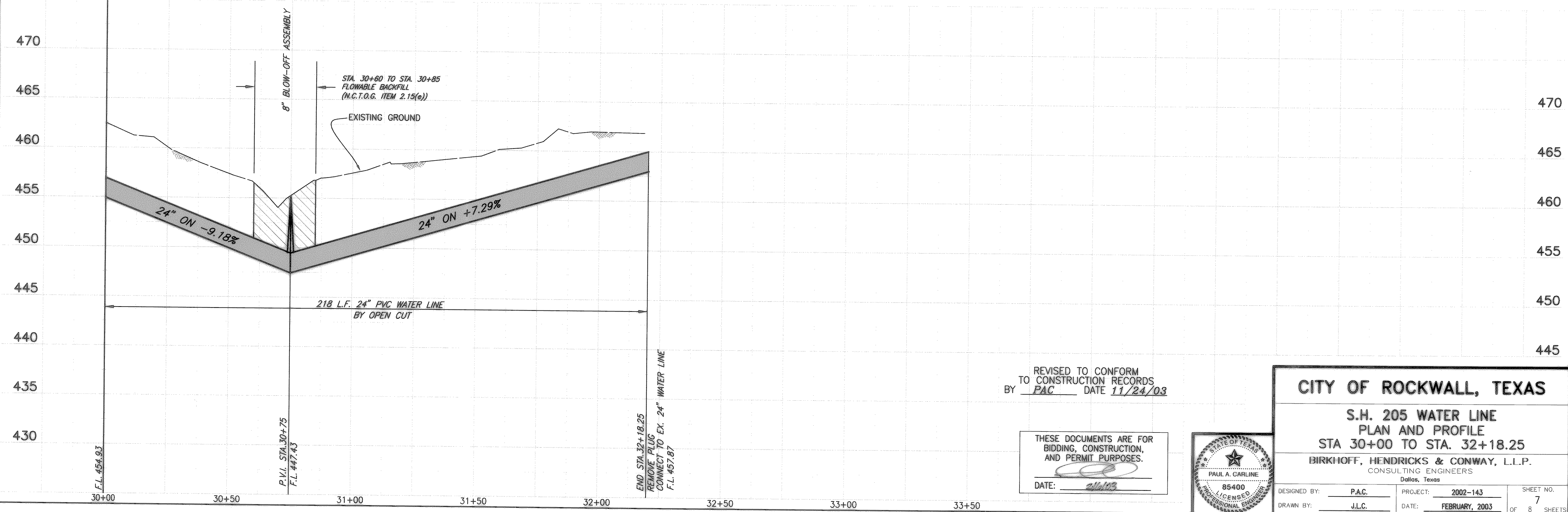
N 13068.8548, E 9944.0645
 STA. 32+18.25 END PROJECT
 REMOVE EXIST. PLUG AND
 CONNECT TO EXIST. 24" W.L.

QUAIL RUN VALLEY
 No. 1
 S.S. McCURRY SURVEY,
 ABSTRACT No. 146

QUAIL RUN VALLEY
 No. 1

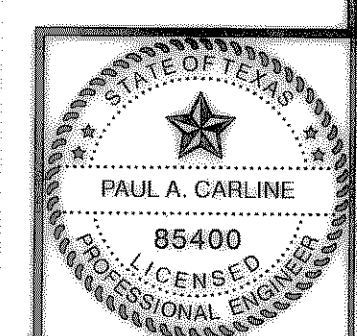
T.B.M. #474 "□" CUT ON THE NORTHWEST CORNER
 OF S.H. 205 BRIDGE @ SQUAGGLE CREEK
 ELEV. 473.06
 N 13,029.0700, E 9,836.1282

These plans and related specifications
 were prepared for construction of this
 specific project only. Reuse of these
 documents is not permitted without
 written authorization of Birkhoff,
 Hendricks & Conway, L.L.P.



REVISED TO CONFORM
 TO CONSTRUCTION RECORDS
 BY PAC DATE 11/24/03

THESE DOCUMENTS ARE FOR
 BIDDING, CONSTRUCTION,
 AND PERMIT PURPOSES.
 DATE: 2/16/03



CITY OF ROCKWALL, TEXAS		
S.H. 205 WATER LINE PLAN AND PROFILE STA 30+00 TO STA. 32+18.25		
BIRKHOFF, HENDRICKS & CONWAY, L.L.P. CONSULTING ENGINEERS Dallas, Texas		
DESIGNED BY: P.A.C.	PROJECT: 2002-143	SHEET NO. 7
DRAWN BY: J.L.C.	DATE: FEBRUARY, 2003	OF 8 SHEETS