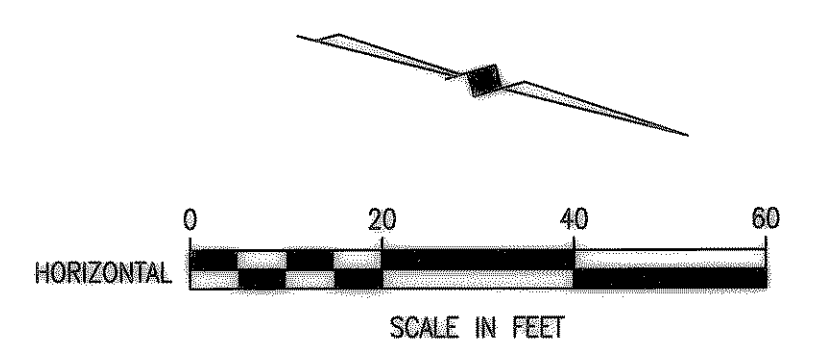
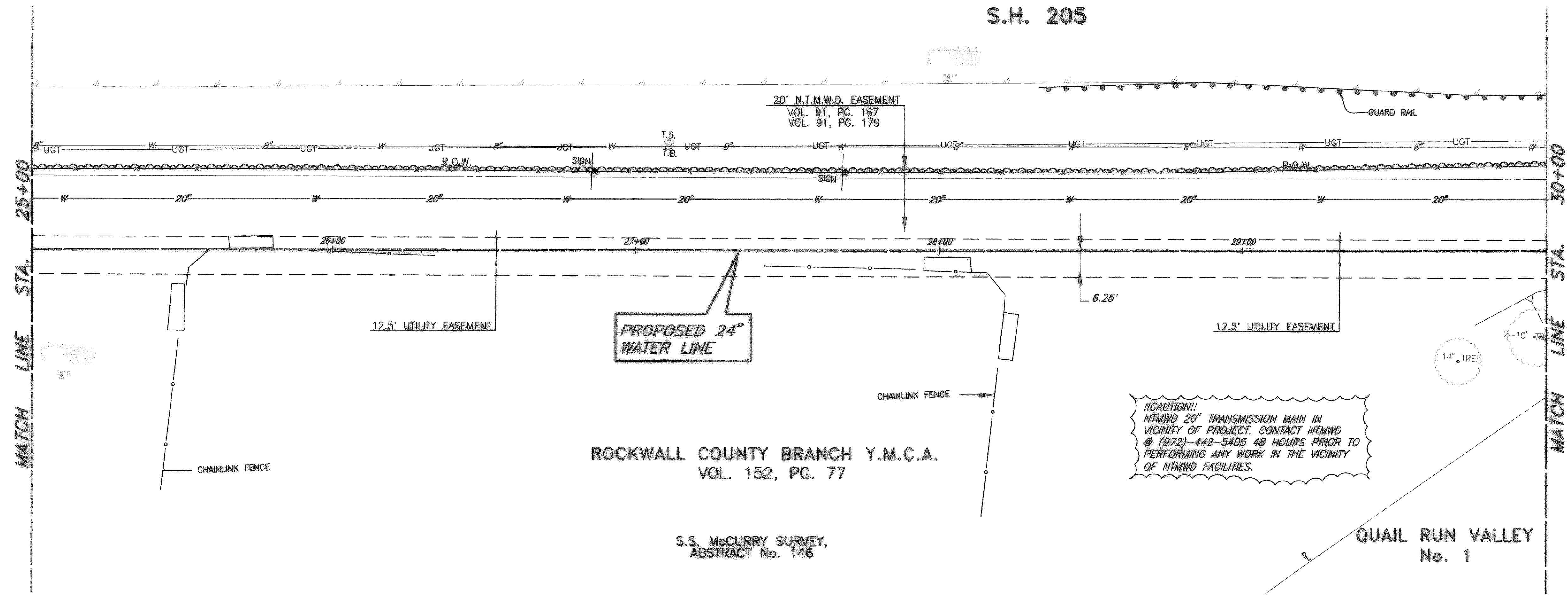


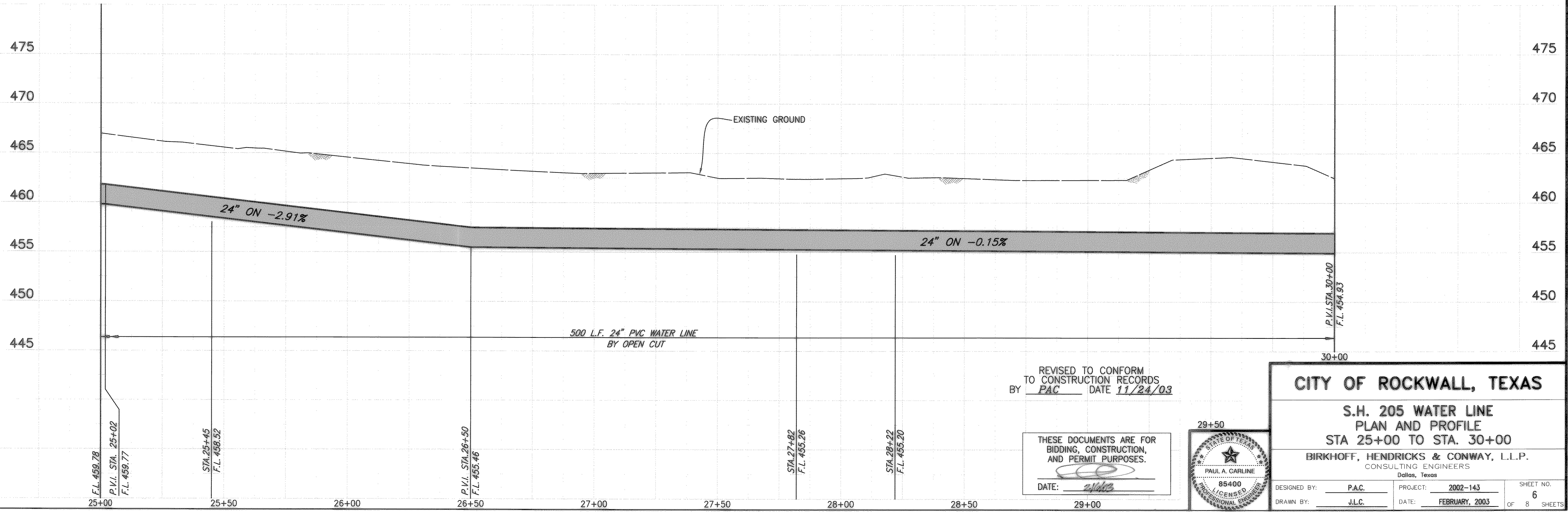
H:\ROCKWALL\2002\143\SHEETS\2002143-06.DWG JLC 02/05/03
 XREF: ROCKWALL\2002\143\BASE\ALIGNMENT SCALE: 1"=40'
 XREF: ROCKWALL\2002\143\PROFILES

S.H. 205



T.B.M. #474 "C" CUT ON THE NORTHWEST CORNER OF S.H. 205 BRIDGE @ SQUABBLE CREEK
ELEV. 473.06
N 13,029.0700, E 9,836.1282

These plans and related specifications were prepared for construction of this specific project only. Reuse of these documents is not permitted without written authorization of Birkhoff, Hendricks & Conway, L.L.P.



CITY OF ROCKWALL, TEXAS

**S.H. 205 WATER LINE
PLAN AND PROFILE
STA 25+00 TO STA. 30+00**

BIRKHOFF, HENDRICKS & CONWAY, L.L.P.
CONSULTING ENGINEERS
Dallas, Texas

DESIGNED BY: PAC PROJECT: 2002-143 SHEET NO. 6
DRAWN BY: J.L.C. DATE: FEBRUARY, 2003 OF 8 SHEETS