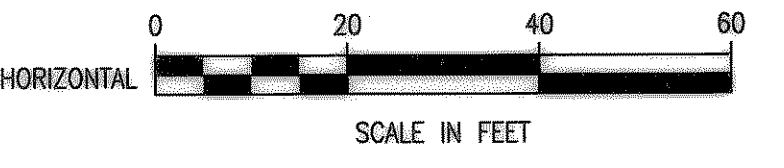
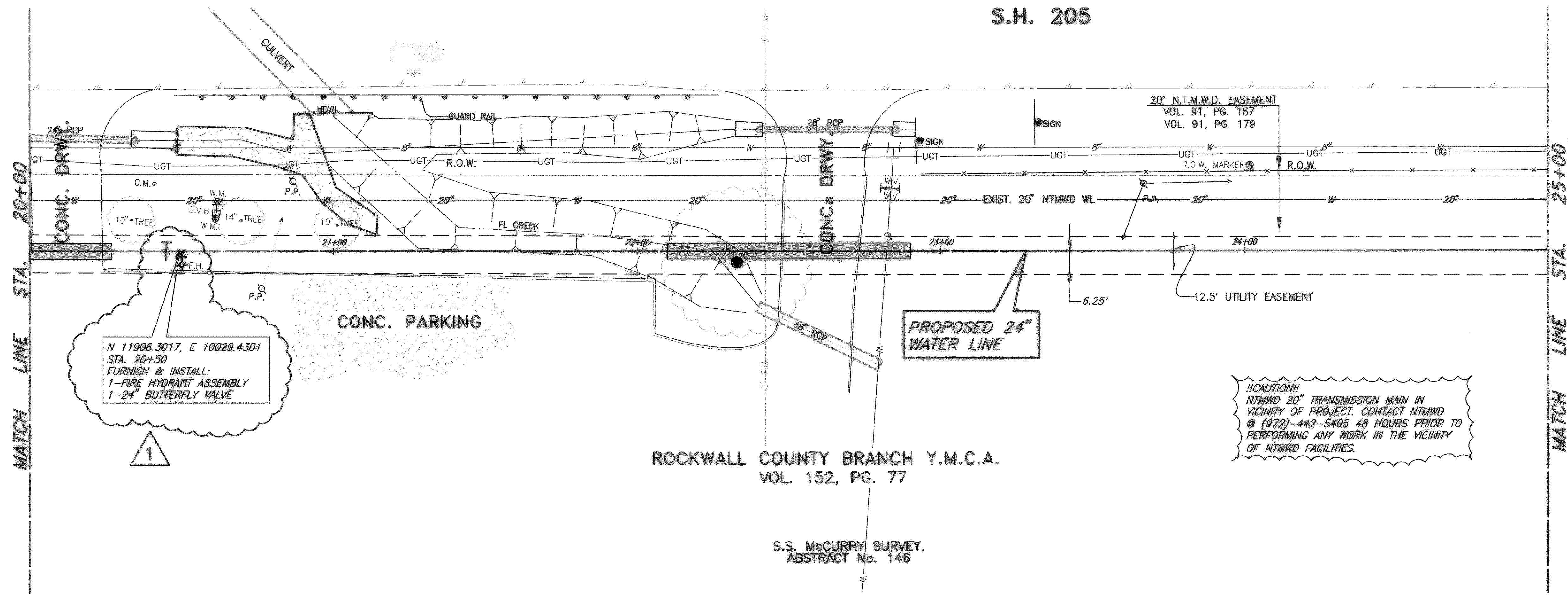


S.H. 205



!!CAUTION!!
 NTMWD 20" TRANSMISSION MAIN IN VICINITY OF PROJECT. CONTACT NTMWD @ (972)-442-5405 48 HOURS PRIOR TO PERFORMING ANY WORK IN THE VICINITY OF NTMWD FACILITIES.

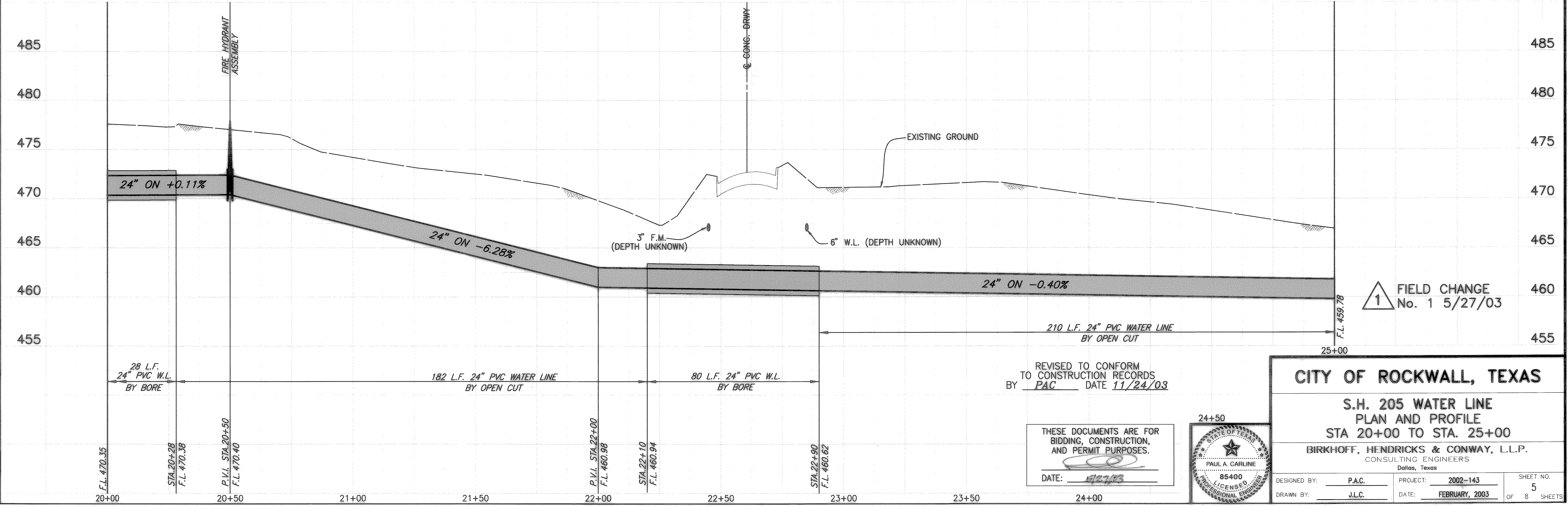
T.B.M. #474 " " CUT ON THE NORTHWEST CORNER OF S.H. 205 BRIDGE @ SQUABBLE CREEK
 ELEV. 473.06
 N 13,029.0700, E 9,836.1282

These plans and related specifications were prepared for construction of this specific project only. Reuse of these documents is not permitted without written authorization of Birkhoff, Hendricks & Conway, L.L.P.

ROCKWALL COUNTY BRANCH Y.M.C.A.
 VOL. 152, PG. 77

S.S. McCURRY SURVEY,
 ABSTRACT No. 146

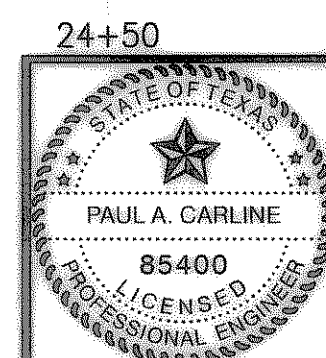
H:\ROCKWALL\2002\143\PROFILES XREF: ROCKWALL\2002\143\BASE\ALIGNMENT XREF: ROCKWALL\2002\143\PROFILES SCALE: 1=40 H:\ROCKWALL\2002\143\SHEETS\2002\143-05.DWG 06/27/03 JLC



FIELD CHANGE
 No. 1 5/27/03

REVISED TO CONFORM TO CONSTRUCTION RECORDS BY PAC DATE 11/24/03

THESE DOCUMENTS ARE FOR BIDDING, CONSTRUCTION, AND PERMIT PURPOSES.
 DATE: 1/27/03



CITY OF ROCKWALL, TEXAS

**S.H. 205 WATER LINE
 PLAN AND PROFILE
 STA 20+00 TO STA. 25+00**

BIRKHOFF, HENDRICKS & CONWAY, L.L.P.
 CONSULTING ENGINEERS
 Dallas, Texas

DESIGNED BY: P.A.C.	PROJECT: 2002-143	SHEET NO. 5
DRAWN BY: J.L.C.	DATE: FEBRUARY, 2003	OF 8 SHEETS