

!CAUTION!
 NIMND 20" TRANSMISSION MAIN IN VICINITY OF PROJECT CONTACT NIMND @ (972)-442-5405 48 HOURS PRIOR TO PERFORMING ANY WORK IN THE VICINITY OF NIMND FACILITIES.

S.H. 205

N 9948.9164, E 9984.1271
 BEGIN STA. 0+00
 CONNECT TO EXISTING 16" RCWP WATER LINE
 FURNISH & INSTALL:
 1-16"x14" TAPPING SLEEVE AND VALVE
 1-24"x14" REDUCER
 2-24" 45° BENDS

N 9940.9041, E 10032.1409
 P.I. STA. 0+48.67
 $\Delta = 89^{\circ}28'46"$ LT
 FURNISH & INSTALL:
 1-24" TEE
 2-24" BUTTERFLY VALVES
 1-24" PLUG(S)

N 10296.3317, E 10082.7436
 P.I. STA. 4+07.83
 $\Delta = 31^{\circ}04'39"$ LT
 FURNISH & INSTALL:
 1-24" 22-1/2° BEND
 1-24" 22-1/2° BEND

N 10301.1336, E 10080.4804
 P.I. STA. 4+13.17
 $\Delta = 31^{\circ}19'00"$ RT
 FURNISH & INSTALL:
 1-24" 11-1/4° BEND
 1-24" 22-1/2° BEND

N 10325.6383, E 10082.8067
 P.I. STA. 4+37.79
 $\Delta = 29^{\circ}57'25"$ RT
 FURNISH & INSTALL:
 1-24" 45° BEND

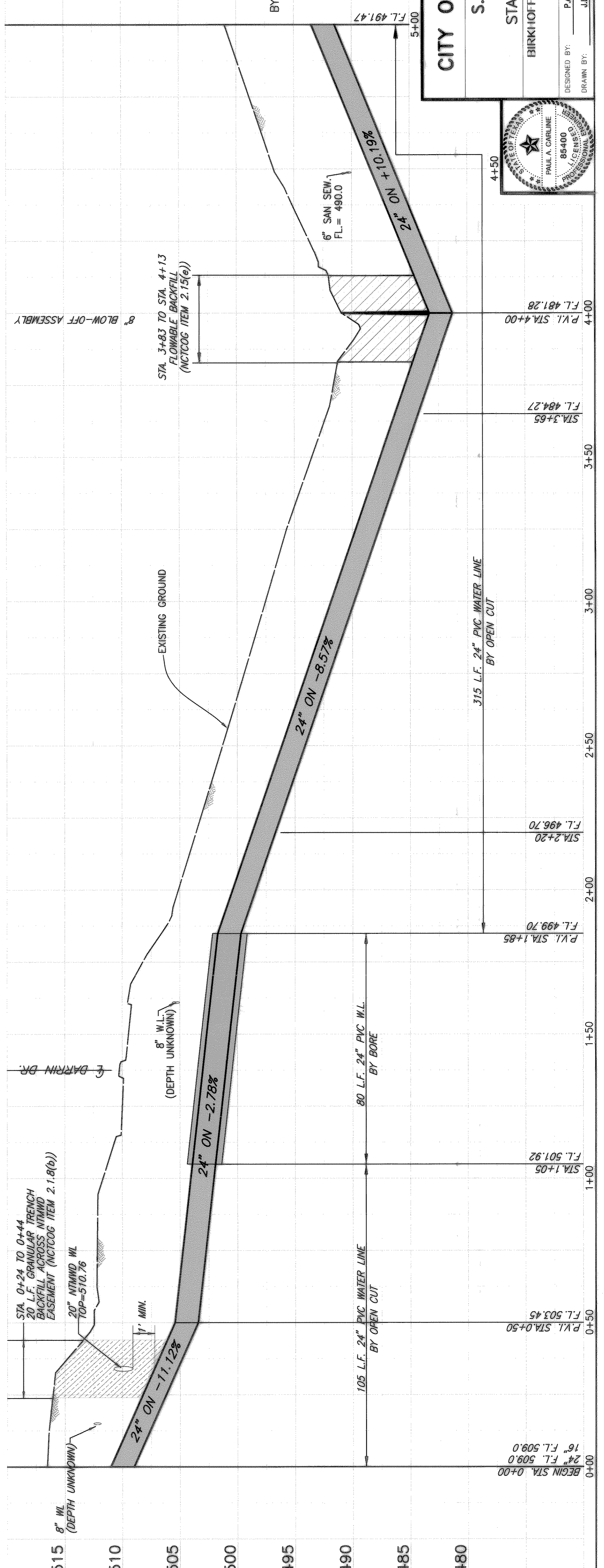
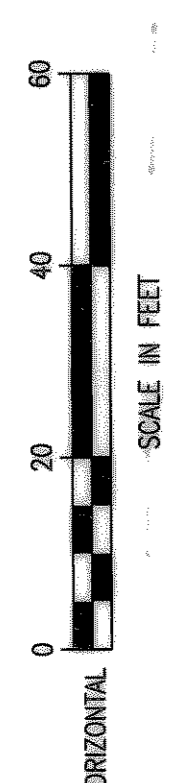
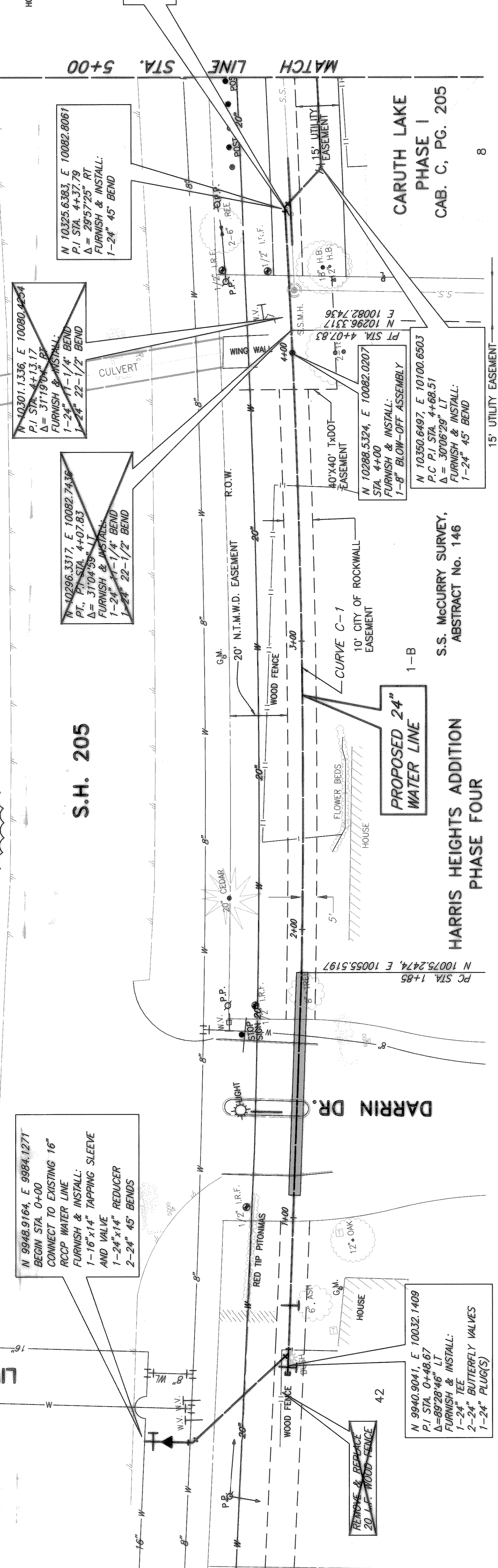
CURVE C-1 DATA
 $\Delta = 03^{\circ}16'40"$
 $R = 3894.33'$
 $L = 111.42'$
 $L = 222.78'$
 $C.B. = N03^{\circ}01'25"W$
 $C.D. = 222.75'$

T.B.M. #474 "C" CUT ON THE NORTHWEST CORNER OF S.H. 205 BRIDGE @ SQUABBLE CREEK
 ELEV. 473.06
 N 13,029.0700, E 9,636.1282

These plans and related specifications were prepared for construction of this specific project only. Please note that these specifications are subject to change without written authorization of Birkhoff, Hendricks & Conway, L.L.P.

**HARRIS HEIGHTS ADDITION
 PHASE FOUR**
 1-B
 S.S. McCURRY SURVEY,
 ABSTRACT No. 146

**CARUTH LAKE
 PHASE I
 CAB. C, PG. 205**
 8



REVISED TO CONFORM TO CONSTRUCTION RECORDS BY PAC DATE 11/24/03

THESE DOCUMENTS ARE FOR BIDDING, CONSTRUCTION, AND PERMIT PURPOSES.
 DATE: 2/6/03

CITY OF ROCKWALL, TEXAS
**S.H. 205 WATER LINE
 PLAN AND PROFILE
 STA 0+00 TO STA. 5+00**
BIRKHOFF, HENDRICKS & CONWAY, L.L.P.
 Dallas, Texas
 CONSULTING ENGINEERS
 LICENSE NO. 85400
 PAUL A. CARLINE
 PROFESSIONAL ENGINEER

DESIGNED BY: PAC. PROJECT: 2002-143 SHEET NO. 1
 DRAWN BY: J.L.C. DATE: FEBRUARY, 2003 OF 8 SHEETS