

FIRE HYDRANT NOTES:

1. IN GENERAL ALL FIRE HYDRANTS SHALL CONFORM TO AWWA STANDARDS SPECIFICATIONS FOR FIRE HYDRANTS FOR ORDINARY WATER WORKS SERVICE FOR WATER AND SANITARY SEWER IMPROVEMENTS. FIRE HYDRANTS SHALL HAVE A 5-1/4" MINIMUM VALVE OPENING AND WITH A BARREL APPROXIMATELY 7" INSIDE DIAMETER. ALL HYDRANTS SHALL BE EQUIPPED WITH A BREAKAWAY FLANGE. ALL HYDRANTS SHALL BE APPROVED BY THE CITY OF ROCKWALL.

CLASS "B" CONC. THRUST BLOCK (POURED IN PLACE). MUST NOT BLOCK WEEP HOLE. (NCTCOG ITEM 7.4.5)

MIN. 7 CUBIC FEET OF WASHED GRAVEL FILL

24" SQUARE CONC. PAD (SEE TYPICAL VALVE SETTING & BOX DETAIL)

2" MIN. 6" MAX. GROUND LINE

1/4" FT. RAISE

2'-0"

4" MIN.

1'-0"

POLY-WRAP

PRECAST CONC. SLAB OR POURED IN PLACE.

2'-0"

4" MIN.

1'-0"

POLY-WRAP

PRECAST CONC. SLAB OR POURED IN PLACE.

2'-0"

4" MIN.

1'-0"

POLY-WRAP

PRECAST CONC. SLAB OR POURED IN PLACE.

2'-0"

4" MIN.

1'-0"

POLY-WRAP

PRECAST CONC. SLAB OR POURED IN PLACE.

2'-0"

4" MIN.

1'-0"

POLY-WRAP

PRECAST CONC. SLAB OR POURED IN PLACE.

2'-0"

4" MIN.

1'-0"

POLY-WRAP

PRECAST CONC. SLAB OR POURED IN PLACE.

2'-0"

4" MIN.

1'-0"

POLY-WRAP

PRECAST CONC. SLAB OR POURED IN PLACE.

2'-0"

4" MIN.

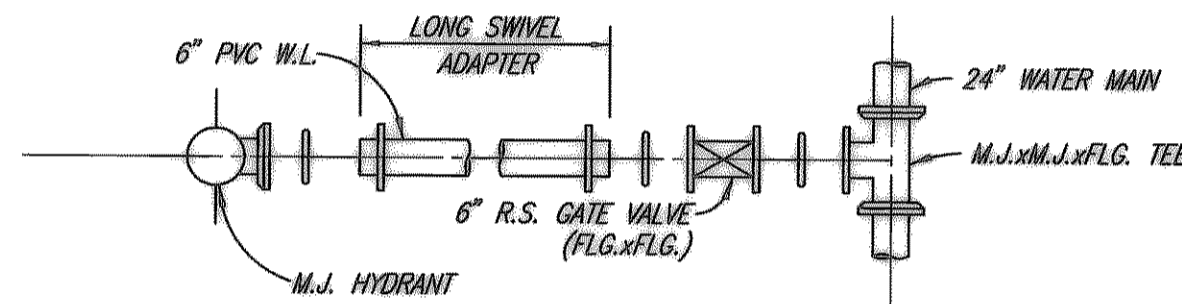
1'-0"

POLY-WRAP

PRECAST CONC. SLAB OR POURED IN PLACE.

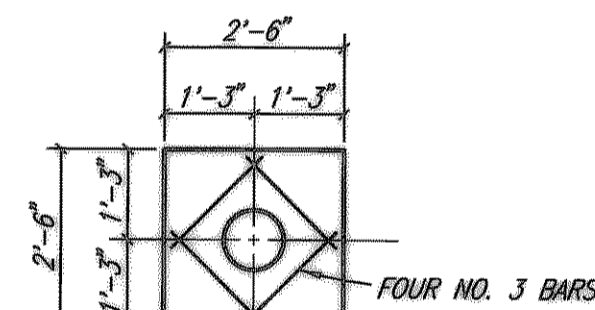
FIRE HYDRANT ASSEMBLY

NO SCALE



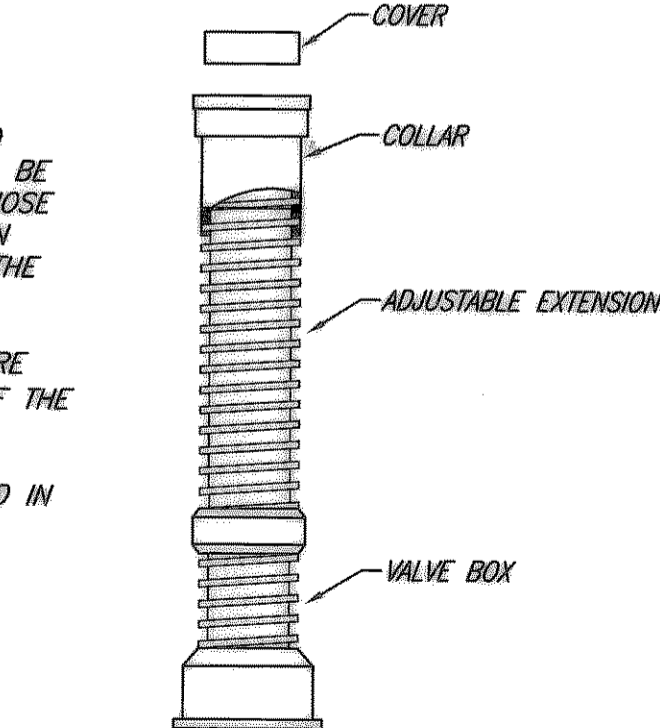
FIRE HYDRANT ASSEMBLY

NO SCALE



VALVE BOX PAD PLAN

NO SCALE

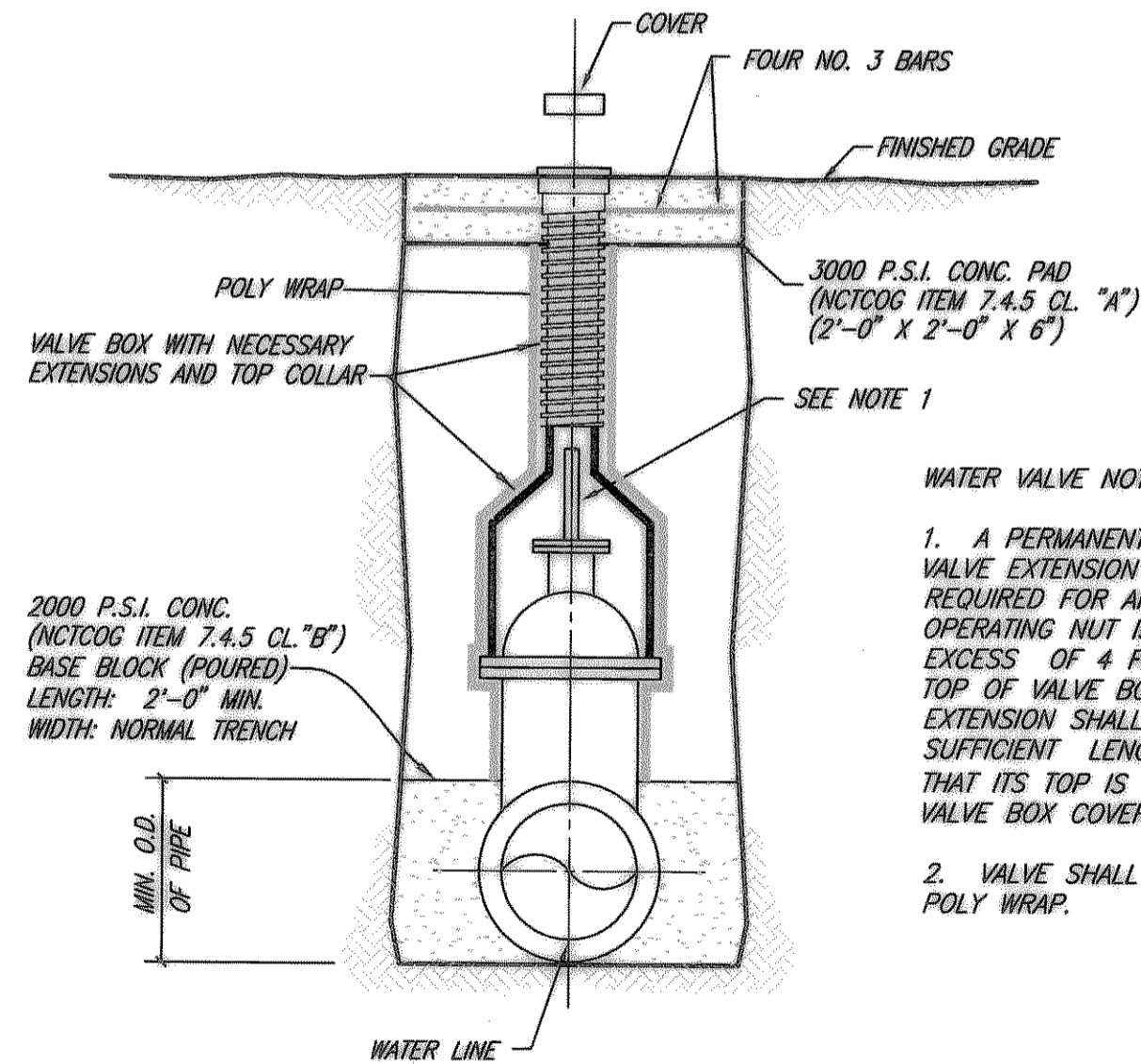


VALVE BOX WITH EXTENSION

NO SCALE

WATER VALVE NOTES:

1. A PERMANENTLY ATTACHED VALVE EXTENSION STEM SHALL BE REQUIRED FOR ANY VALVE WHOSE OPERATING NUT IS LOCATED IN EXCESS OF 4 FEET BELOW THE TOP OF VALVE BOX. THIS EXTENSION SHALL BE OF SUFFICIENT LENGTH TO INSURE THAT ITS TOP IS WITHIN 4" OF THE VALVE BOX COVER.
2. VALVE SHALL BE WRAPPED IN POLY WRAP.



BUTTERFLY VALVE SETTING & BOX

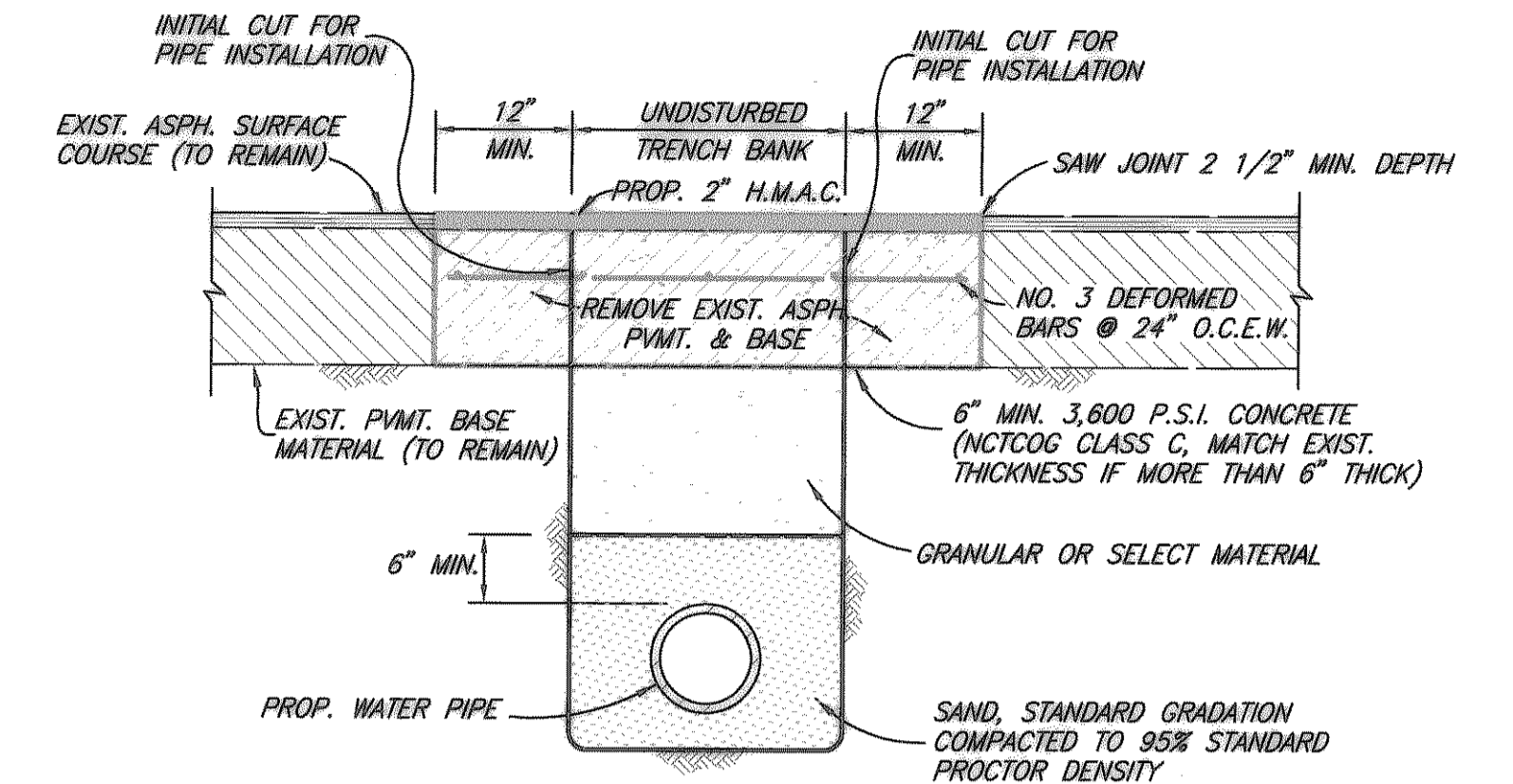
NO SCALE

NTMWD NOTES (NOTES APPLY TO ALL SHEETS)

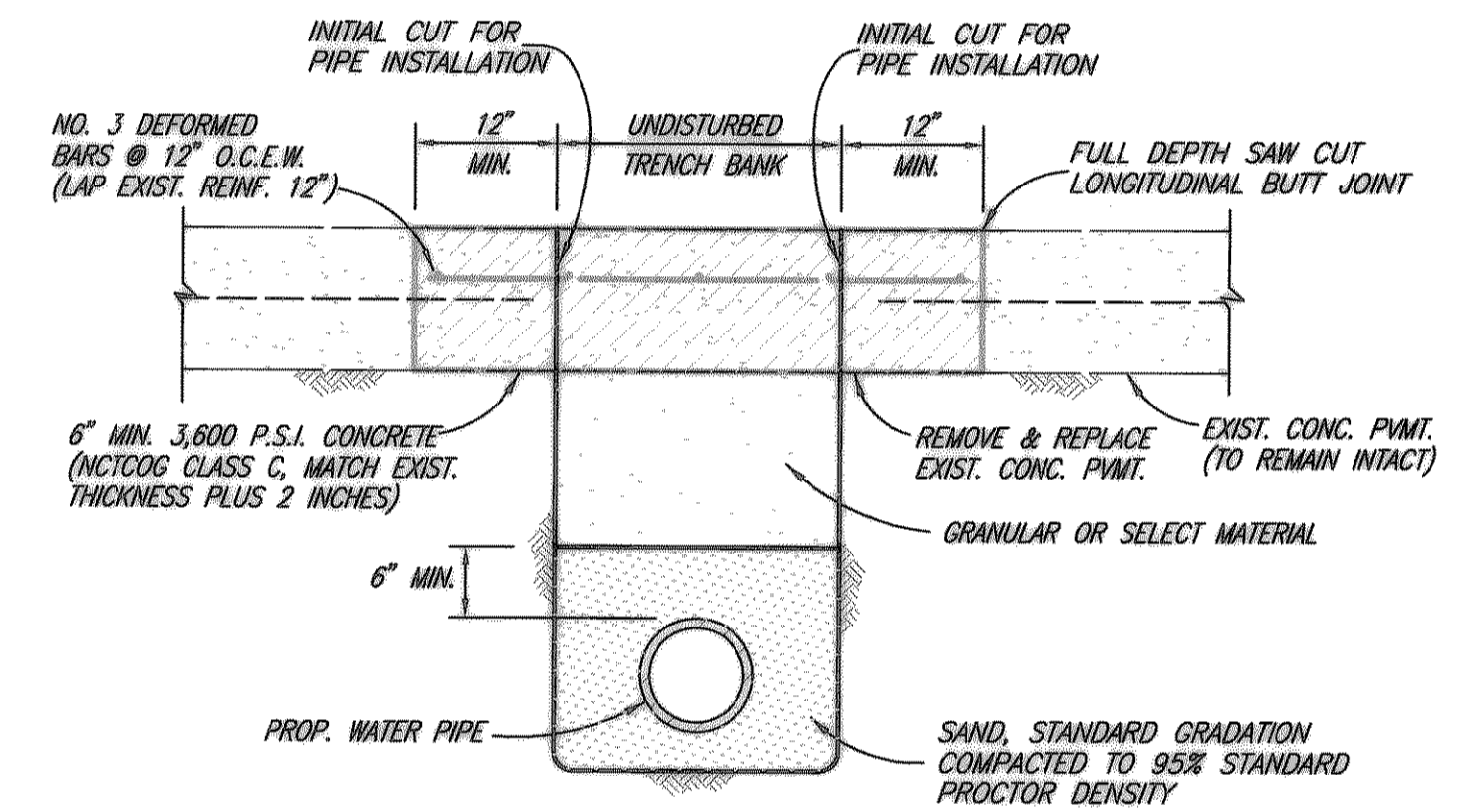
1. NORTH TEXAS MUNICIPAL WATER DISTRICT (NTMWD) 20 INCH WATER LINE IS LOCATED WITHIN LIMITS OF CONSTRUCTION.
2. OPERATION OF HEAVY EARTH MOVING EQUIPMENT, COMPACTION EQUIPMENT OR HEAVY CONSTRUCTION EQUIPMENT, SUCH AS CONCRETE TRUCKS, SHALL BE RESTRICTED TO SPECIFIC CROSSING POINTS ACROSS NTMWD EASEMENTS, AS APPROVED BY THE NTMWD. THE CROSSINGS SHALL BE DESIGNATED AND VERIFIED TO PROVIDE A MINIMUM OF FIVE- FEET OF COVER.
3. TO ASSURE THAT PLACING OF SIGNIFICANT LOADS OVER THE NTMWD PIPELINE DOES NOT DAMAGE THE EXISTING PIPELINE, NO MATERIALS SHALL BE STOCK PILED ON THE NTMWD EASEMENT, WITHOUT AUTHORIZATION FROM THE NTMWD. IF THE CONTRACTOR DESIRES TO USE NTMWD EASEMENT FOR STOCKPILE OF MATERIALS CONTACT NTMWD ENGINEERING AT 9972)-442-5405 SO YOUR PLANS FOR USE OF NTMWD EASEMENT CAN BE REVISED.
4. UNLESS OTHERWISE SHOWN OR REQUIRED, A MINIMUM OF ONE FOOT CLEARANCE SHALL BE PROVIDED FOR ALL UTILITIES CROSSING THE NTMWD PIPELINES.
5. THE CONTRACTOR SHALL CONTACT NTMWD ENGINEERING AT (972)-442-5405 AT LEAST 48 HOURS PRIOR TO PERFORMING ANY WORK IN THE VICINITY OF THE NTMWD FACILITIES.

WATERLINE NOTES:

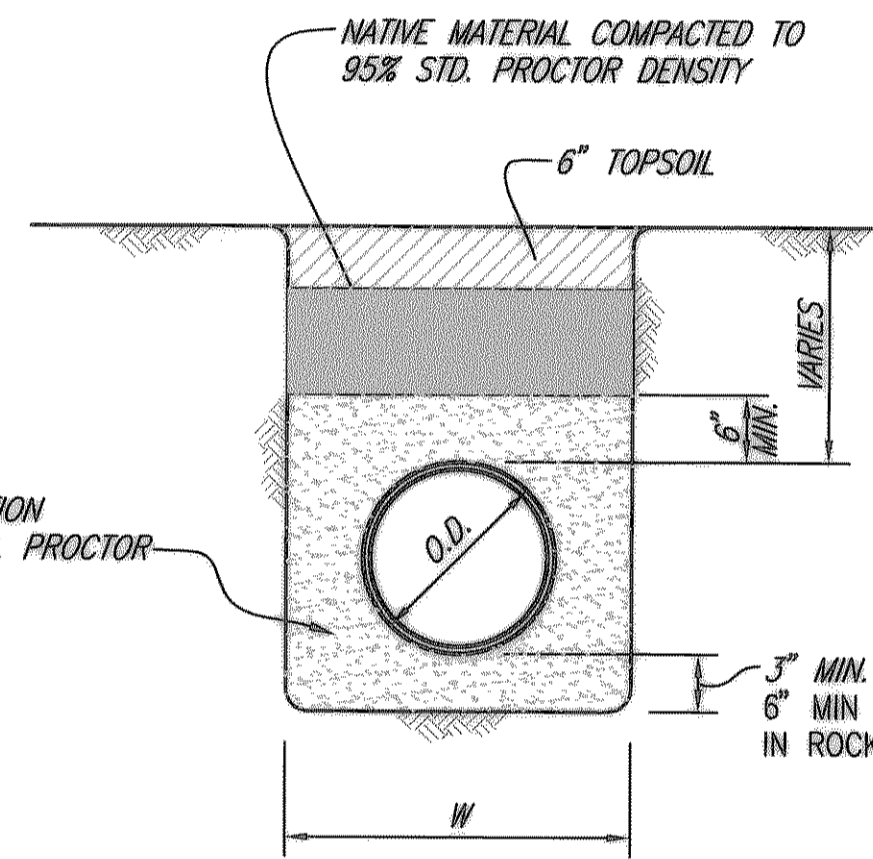
1. 24 INCH WATER LINE SHALL BE AWWA C905, DR 18 PVC.
2. ALL WATERLINES INSTALLED BY OPEN CUT SHALL HAVE CLASS "B-4" EMBEDMENT UNLESS NOTED OTHERWISE OR DIRECTED BY ENGINEER.
3. WATERLINE BACKFILL SHALL BE AS SHOWN IN EMBEDMENT DETAIL UNLESS NOTED OTHERWISE OR DIRECTED BY ENGINEER.



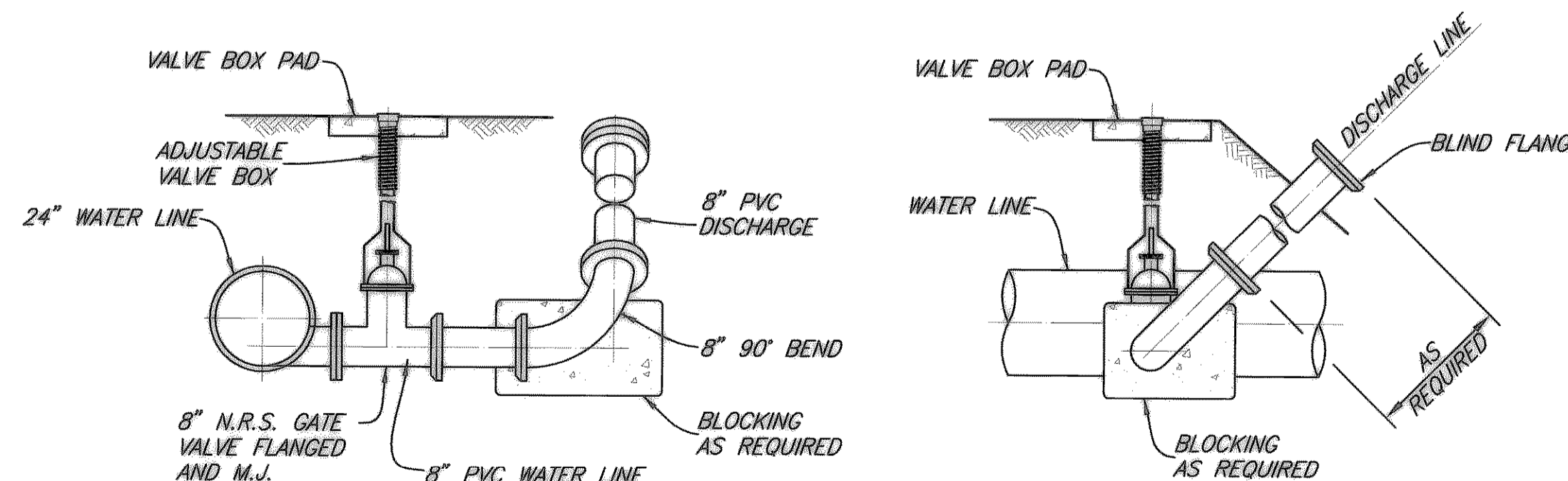
ASPHALT STREET OR DRIVEWAY REPAIR



CONCRETE STREET OR DRIVEWAY REPAIR



CLASS B-4 EMBEDMENT

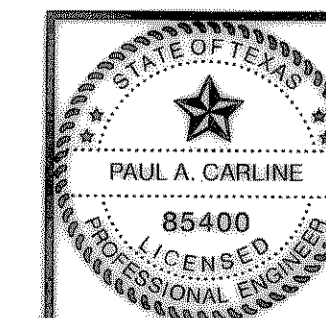


BLOW OFF VALVE ASSEMBLY

REVISED TO CONFORM TO CONSTRUCTION RECORDS BY PAC DATE 11/24/03

THESE DOCUMENTS ARE FOR BIDDING, CONSTRUCTION, AND PERMIT PURPOSES.

DATE: 2/16/03



**CITY OF ROCKWALL, TEXAS
S.H. 205 WATER LINE IMPROVEMENTS
NOTES AND DETAILS**

BIRKHOFF, HENDRICKS & CONWAY, L.L.P.
CONSULTING ENGINEERS
Dallas, Texas

DESIGNED BY: P.A.C. PROJECT: 2002-143 SHEET NO. 8
DRAWN BY: J.L.C. DATE: FEBRUARY, 2003 OF 8 SHEETS

These plans and related specifications were prepared for construction of this specific project only. Reuse of these documents is not permitted without written authorization of Birkhoff, Hendricks & Conway, L.L.P.