

W.T. DeWEESE SURVEY
ABSTRACT NO. 71

**THE FREE METHODIST CHURCH
OF NORTH AMERICA ADDITION**
CABINET D, SLIDES 247 AND 248

MATCH LINE STA. 50+00
N 15205.5178, E 11595.6214

STATE HIGHWAY NO. 205

ESTATE OF
W.W. CARUTH, JR.
W.T. DEWEESE SURVEY
ABSTRACT NO. 71

DALTON ROAD
F.M. 552

N 15984.5755, E 11545.5859
M.H. STA. 53+87.50
CONSTRUCT 5' DIA. MANHOLE
END PROP. 12" SANITARY SEWER
FURNISH & INSTALL:
1-8" PLUG
CUT, PLUG & ABANDON EX. 8" F.M. (S)
CONNECT TO EX. 8" F.M. (N)

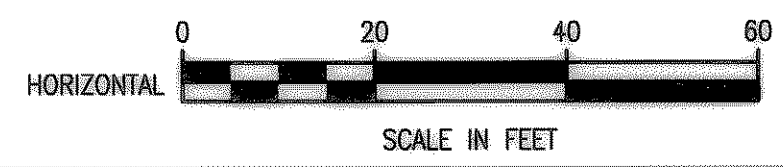
FURNISH & INSTALL:
18" SANITARY SEWER

N 15974.7722, E 11660.6691
M.H. STA. 52+72.00
Δ = 90°00'00" LT.
CONSTRUCT 5' DIA. MANHOLE

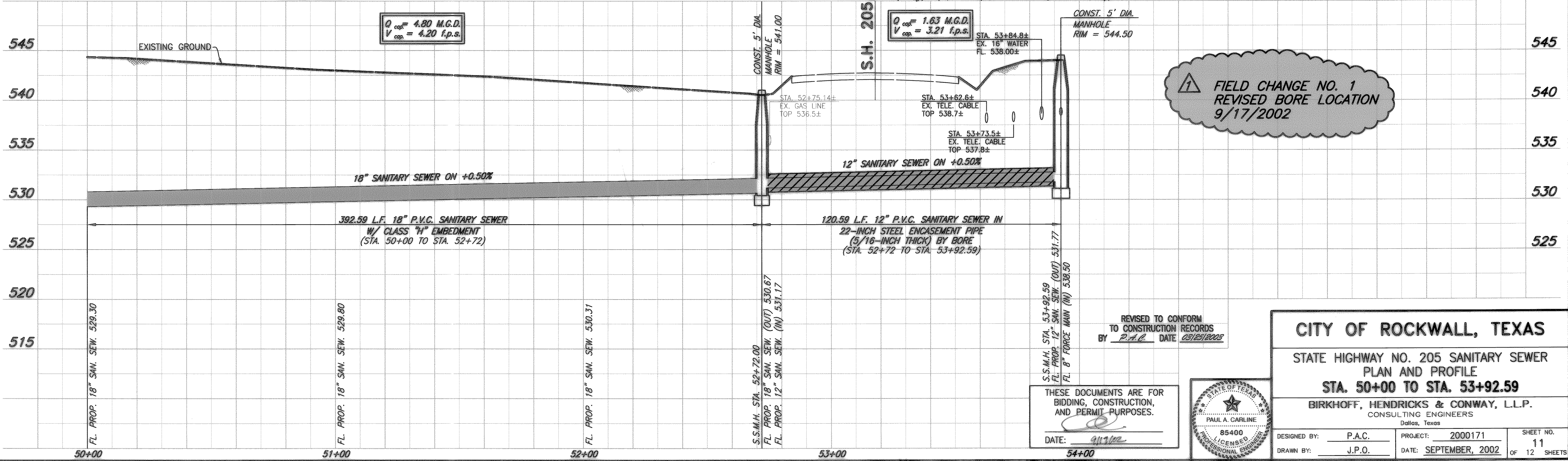
FURNISH & INSTALL:
12" SANITARY SEWER

WARNING
S.W. BELL BURIED
TELEPHONE CABLE
CALL ENTERPRISE 9800
72 HOURS PRIOR TO
EXCAVATION

WARNING
T.X.U. GAS LINE
NOTIFY T.X.U. GAS
72 HOURS PRIOR TO
EXCAVATION



These plans and related specifications were prepared for construction of this specific project only. Reuse of these documents is not permitted without written authorization of Birkhoff, Hendricks, & Conway, L.L.P.

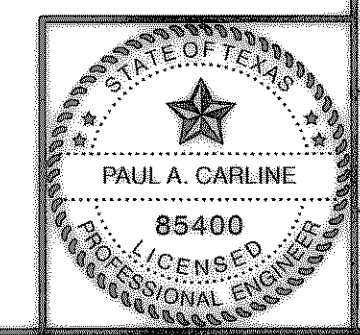


CITY OF ROCKWALL, TEXAS

STATE HIGHWAY NO. 205 SANITARY SEWER
PLAN AND PROFILE
STA. 50+00 TO STA. 53+92.59

BIRKHOFF, HENDRICKS & CONWAY, L.L.P.
CONSULTING ENGINEERS
Dallas, Texas

DESIGNED BY: P.A.C. PROJECT: 2000171 SHEET NO. 11
DRAWN BY: J.P.O. DATE: SEPTEMBER, 2002 OF 12 SHEETS



Revised: 09/17/2002 JPO H:\Projects\Rockwall\2000171-501.dwg Master: 170, Master: 171, Revised: Master Profile