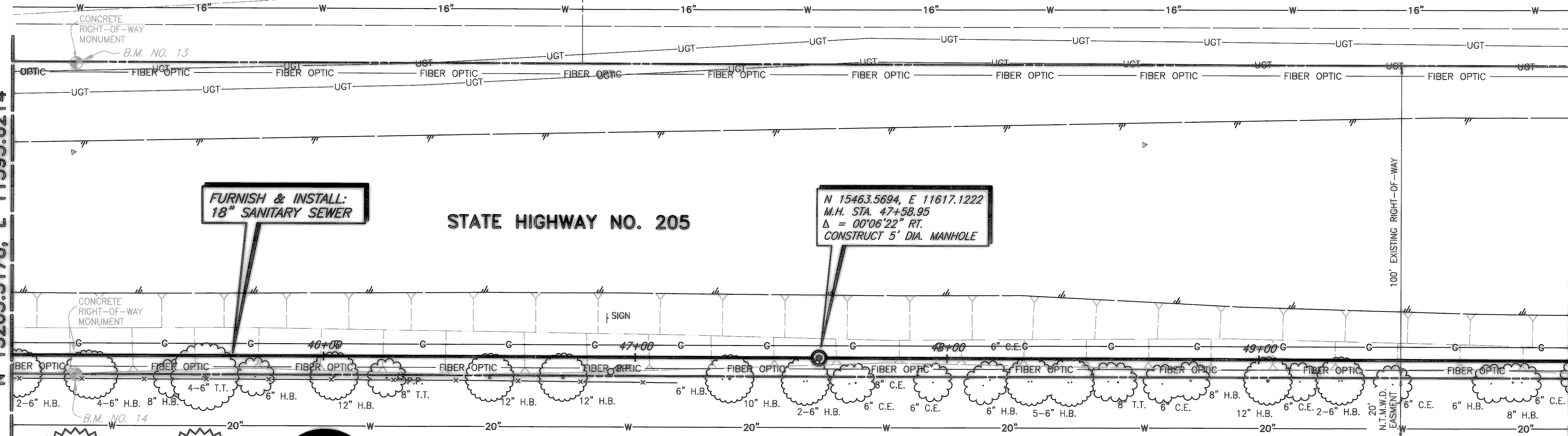


MASON-STEED ADDITION

DIRKWOOD ESTATES
CABINET D, SLIDE 37

MATCH LINE STA. 45+00
N 15205.5178, E 11595.6214

MATCH LINE STA. 50+00
N 15205.5178, E 11595.6214



FURNISH & INSTALL:
18" SANITARY SEWER

N 15463.5694, E 11617.1222
M.H. STA. 47+58.95
Δ = 00°06'22" RT.
CONSTRUCT 5' DIA. MANHOLE

WARNING
S.W. BELL BURIED
TELEPHONE CABLE
CALL ENTERPRISE 9800
72 HOURS PRIOR TO
EXCAVATION

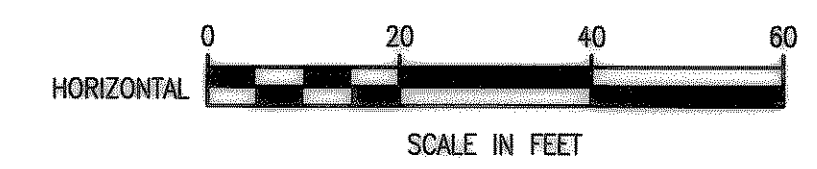
WARNING
T.X.U. GAS LINE
NOTIFY T.X.U. GAS
72 HOURS PRIOR TO
EXCAVATION



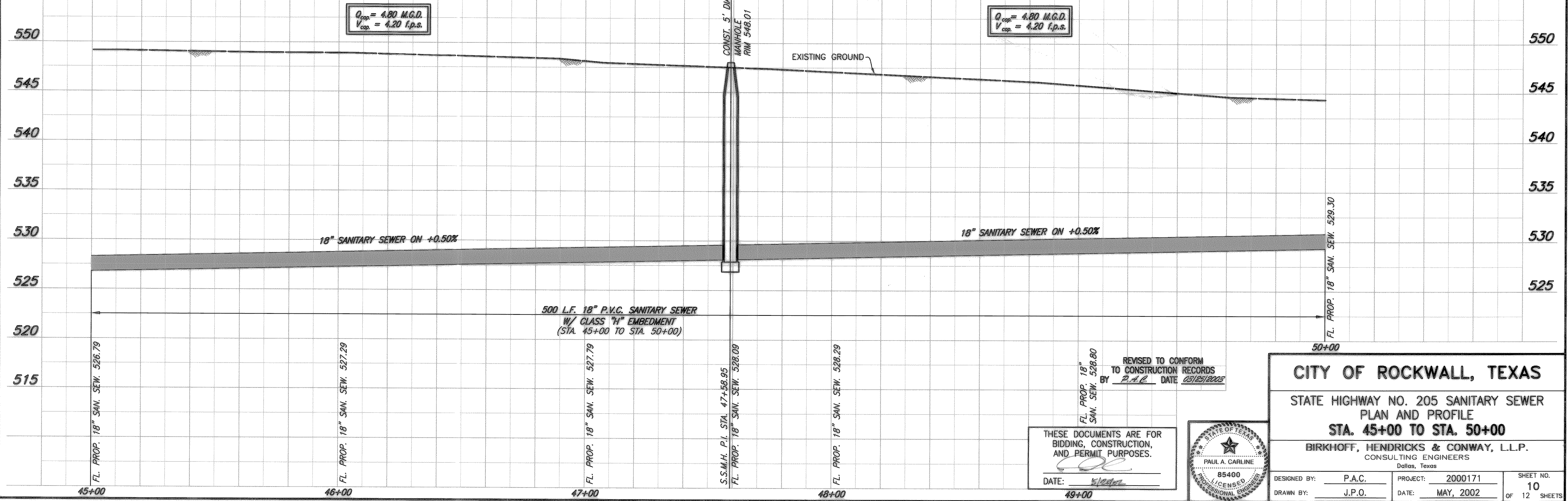
ESTATE OF
W.W. CARUTH, JR.
W.T. DEWEES SURVEY
ABSTRACT NO. 71

B.M. NO. 13
N 15233.5937, E 11504.0143
STA. 45+20.37, 93.62' LT.
CONCRETE RIGHT-OF-WAY MONUMENT
ELEV. 547.16

B.M. NO. 14
N 15225.483, E 11603.4823
STA. 45+20.55, 6.18' RT.
CONCRETE RIGHT-OF-WAY MONUMENT
ELEV. 547.75



These plans and related specifications were prepared for construction of this specific project only. Reuse of these documents is not permitted without written authorization of Birkhoff, Hendricks, & Conway, L.L.P.



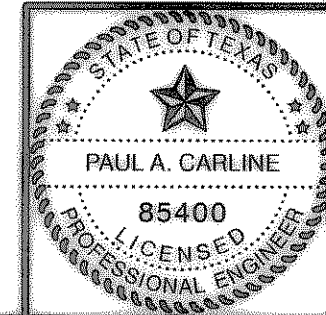
$Q_{cap} = 4.80$ M.G.D.
 $V_{cap} = 4.20$ f.p.s.

$Q_{cap} = 4.80$ M.G.D.
 $V_{cap} = 4.20$ f.p.s.

500 L.F. 18" P.V.C. SANITARY SEWER
W/ CLASS "H" EMBEDMENT
(STA. 45+00 TO STA. 50+00)

REVISED TO CONFORM
TO CONSTRUCTION RECORDS
BY P.A.C. DATE 05/25/2002

THESE DOCUMENTS ARE FOR
BIDDING, CONSTRUCTION,
AND PERMIT PURPOSES.
DATE: 5/25/02



CITY OF ROCKWALL, TEXAS

STATE HIGHWAY NO. 205 SANITARY SEWER
PLAN AND PROFILE
STA. 45+00 TO STA. 50+00

BIRKHOFF, HENDRICKS & CONWAY, L.L.P.
CONSULTING ENGINEERS
Dallas, Texas

DESIGNED BY: P.A.C.	PROJECT: 2000171	SHEET NO. 10
DRAWN BY: J.P.O.	DATE: MAY, 2002	OF 12 SHEETS

Revised: 05/20/2002 KAB H:\Projects\Rockwall\2000171\Plans\Sheets\2000171-S10.dwg Master 171, Revised Master Profile