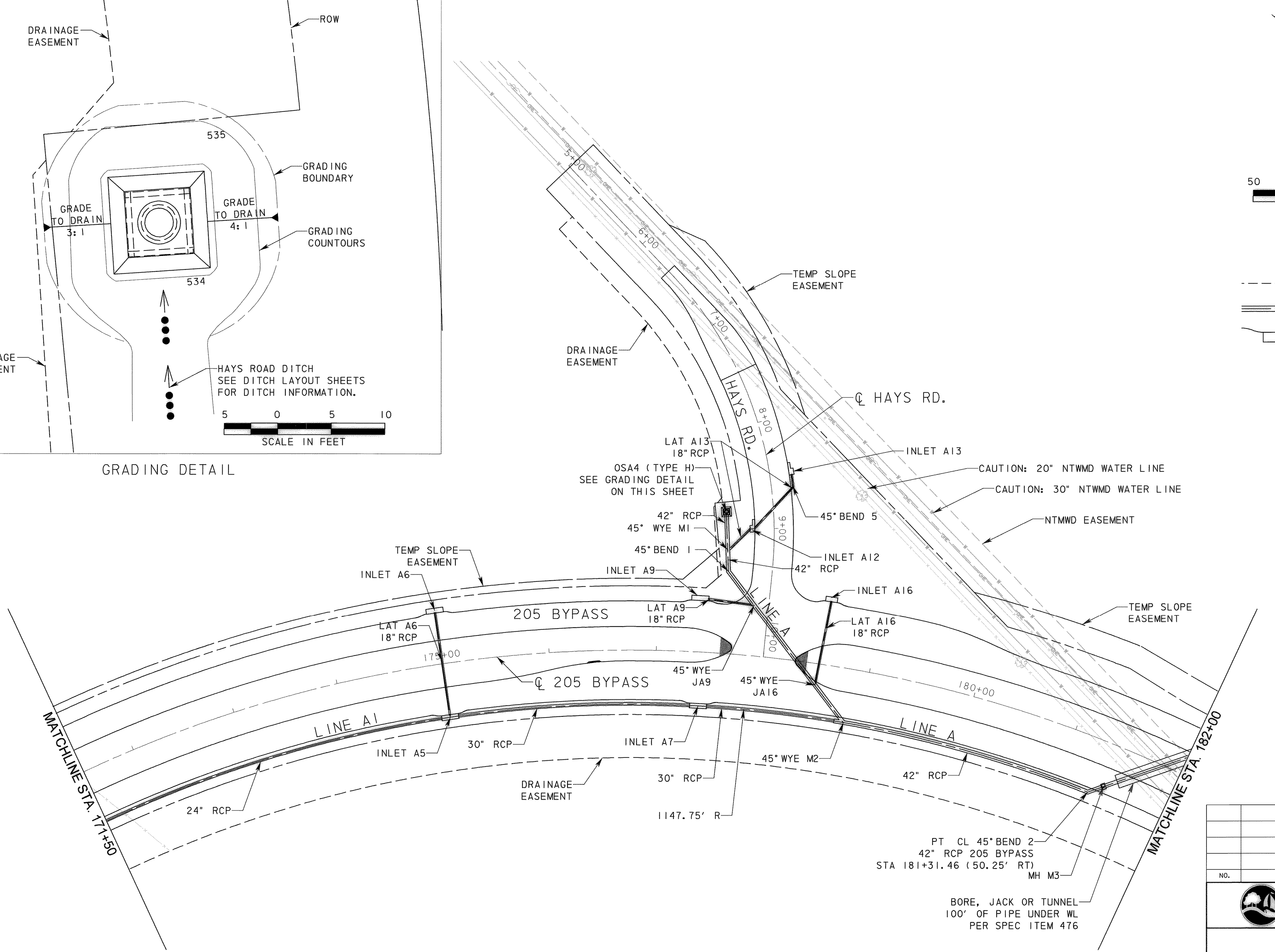
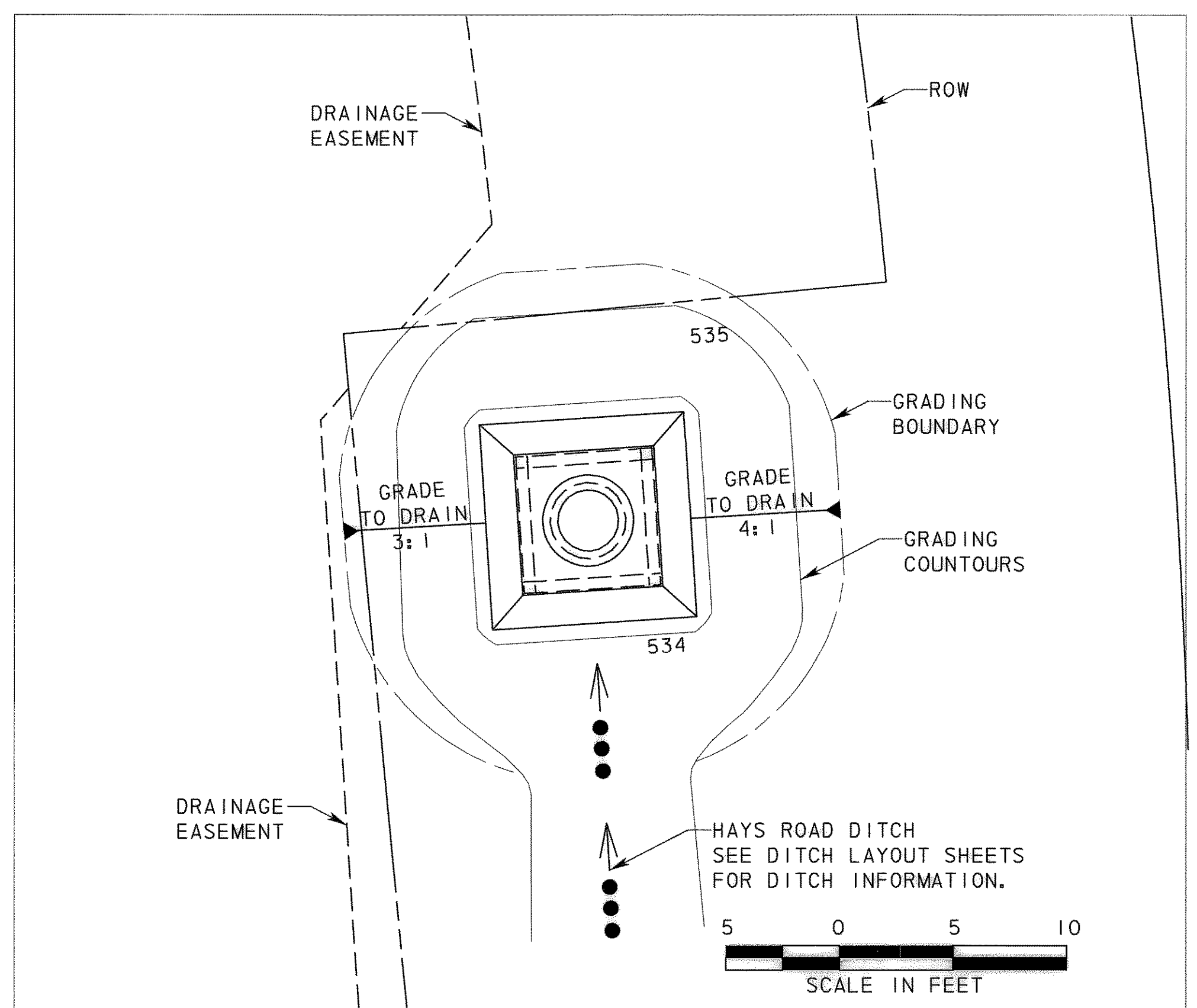


LEGEND

- PROPOSED ROW
- PROPOSED STORM DRAIN
- INLET



RECORD DRAWING

This drawing is a compilation of the original sealed engineering drawing and modifications by addenda, change orders and information furnished by the contractor. Information shown that was provided by the contractor and others not associated with the design engineer cannot be verified for accuracy or completeness. Original sealed drawing is on file at the office of AECOM USA Group, Inc., TBPE REG. NO. F-3082

ORIGINAL DRAWING SEALED & SIGNED BY
 Matthew L. Abbe, P.E.
 TX NO. 92715

NO.	REVISION	BY	DATE

City of Rockwall, Texas

205 BYPASS SECTION 1

STORM PLAN
 STA. 171+50 TO STA. 182+00

4 OF 7

TCB AECOM

TCB INC.
 WWW.TCB.AECOM.COM
 17300 DALLAS PARKWAY, SUITE 1010
 DALLAS, TEXAS 75248

Unit: PW-DAL-FW	Scale: Horiz: AS SHOWN	Date: 11/11/2009
Designed: SRR/SDB	Checked: TCB	Project No: 60004153
Drawn: FG	Approved: TCB	Sheet: 92 of 217

P:\4328\60004153-205Bypass\CADD\Sheets\Section1\40-00-To-FM55\Record Drawing 10_7_09\0925\storm-plan-04.dgn
 11/11/2009