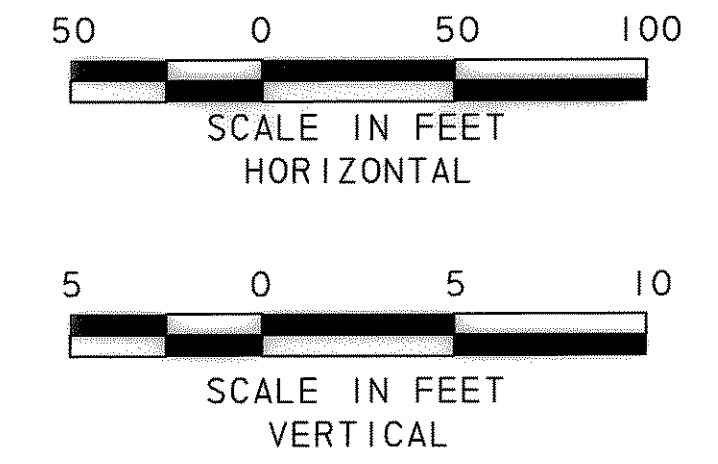
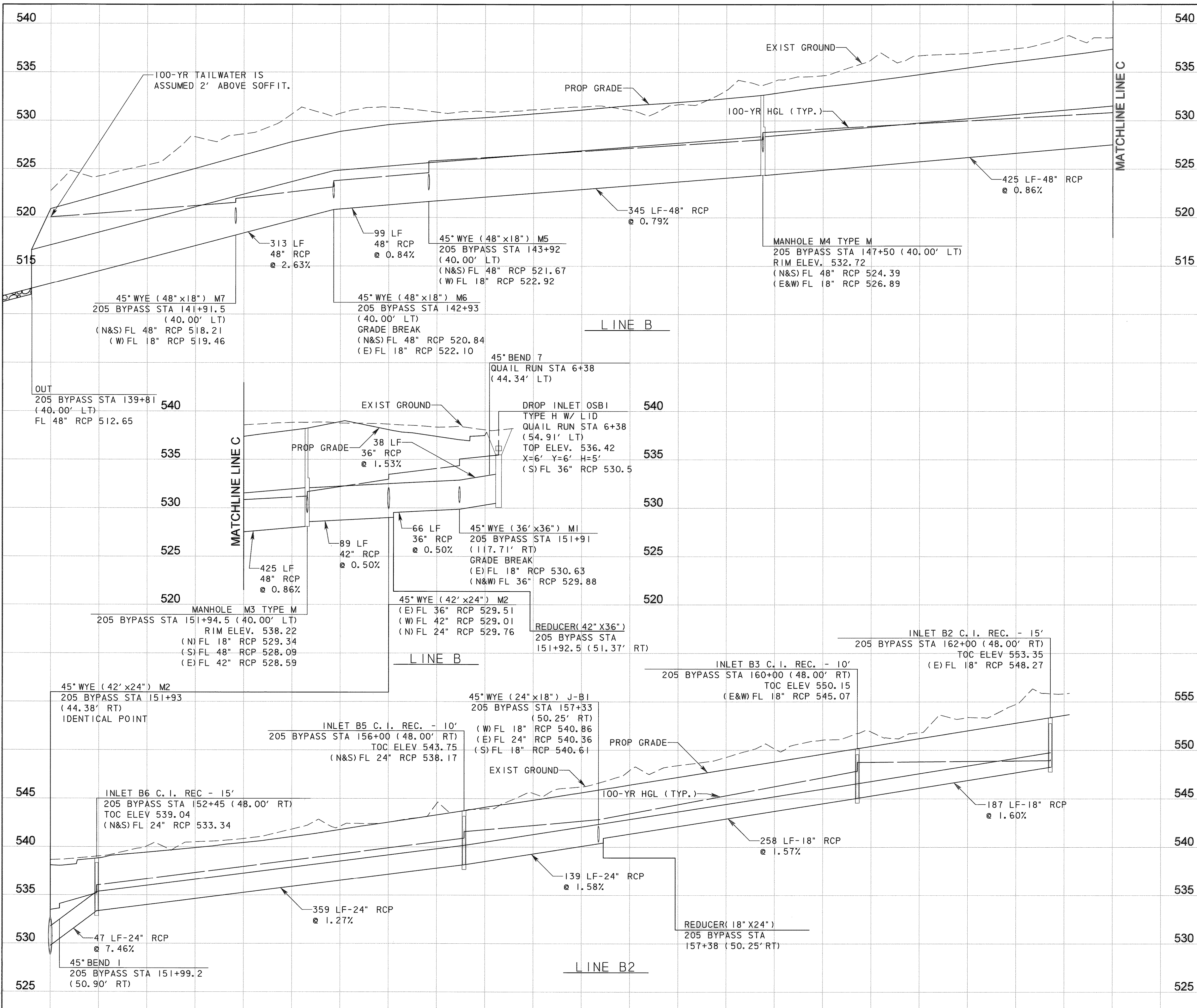


P:\4328\60004153-205Bypass\CADD\Sheets\Section1-140-00-To-FM55\Record Drawing 10_7_09\0955Storm\profl1e-03.dgn
11/11/2009



- NOTES:
1. FLOWLINE ELEVATIONS AND GRADES ARE CALCULATED FROM APPROPRIATE CENTER TO CENTER OF PROPOSED DRAINAGE STRUCTURES. PIPE LENGTHS ON PLANS ARE ACTUAL LENGTHS USED IN QUANTITY TAKEOFFS.
 2. ALL UTILITIES SHOWN ARE APPROXIMATE AND SHOULD BE FIELD VERIFIED AS TO THE LOCATION AND DEPTH PRIOR TO COSTRUCTION.
 3. ALL STORM DRAIN PIPE IS CLASS III UNLESS OTHERWISE NOTED.
 4. REFER TO TABLE FOR MANHOLE DIMENSIONS.
 5. THE CONTROL POINT FOR RECESSED CURB INLETS IS AT THE CENTER OF THE OUTSIDE FACE OF THE INLET.
 6. FOR RECESSED CURB INLETS, VARIABLE DIMENSION "W," AS SHOWN ON THE NCTCOG STANDARDS, SHALL BE 3.5-FT.

SYSTEM	MANHOLE	DIMENSIONS (FT)		
		X	Y	H
B	MH M4	4.0	6.0	5.0
B	MH M8	4.0	6.0	5.0
B	MH M3	5.5	6.0	5.0

Note: Y = MH Outside Dimension Parallel to 205 CL
 X = MH Outside Dimension Normal to 205 CL
 H = Inside Vertical MH Dimension (Does Not Include Riser)

Control Point For MH is at Center of Bottom Slab of MH

RECORD DRAWING

This drawing is a compilation of the original sealed engineering drawing and modifications by addenda, change orders and information furnished by the contractor. Information shown that was provided by the contractor and others not associated with the design engineer cannot be verified for accuracy or completeness. Original sealed drawing is on file at the office of AECOM USA Group, Inc., TBPE REG. NO. F-3082

ORIGINAL DRAWING SEALED & SIGNED BY
 Matthew L. Abbe, P.E.
 TX NO. 92715

NO.	REVISION	BY	DATE
205 BYPASS SECTION 1			
STORM DRAIN PROFILES LINE B & LINE B2			
3 OF 3			
TCB AECOM			
<small>TCB INC. WWW.TCB.AECOM.COM 17300 DALLAS PARKWAY, SUITE 1010 DALLAS, TEXAS 75248</small>			
Unit	PW-DAL-FW	Scale: Horiz AS SHOWN Vert: AS SHOWN	Date 11/11/2009
Designed	SRR/SDB	Checked TCB	Project No. 60004153
Drawn	FG	Approved TCB	Sheet 98 of 217